



Hello, furtado (Log out)

New

Your Stuff

History

Browse

Search QlikCommunity

I'm looking for...

Communities

Groups

Blogs

Ideas

New to QlikView

QlikView.com »

QlikCommunity > Deployment and Management (Server/Publisher/AJAX/IE/Web Parts) > Documents

Share

Translate

[Up to Documents in Deployment and Management \(Server/Publisher/AJAX/IE/Web Parts\)](#)

# How to Distribute Dashboard and Implement Section Access

VERSION 2

Created on: Dec 16, 2011 2:24 PM by [Tanya Kobyluk](#) - Last Modified: May 22, 2012 3:00 PM by [Tanya Kobyluk](#)

Andy Rizutto from NxGen Consulting showed me how to do this, so I thought to share.

## How do I distribute the dashboard to the Access Point?

Dashboard distribution is the mechanism that controls who can see dashboards within the access point. This value is set in the QlikView Enterprise Management Console (QEMC), scheduled as a part of the task that refreshes a dashboard.

Distribution can be done to individual accounts or to network groups, within the company domain.

## How do I implement Section Access?

Section Access allows access to subsets of the data, using a key and the network domain account to restrict the data that will display.

### 1. Security Script

Update the code to include an inline table so that the dashboard will be distributed from the script itself, even if the part of the code actually calling the section access does not work.

```

Section Access;
// *****
LOAD * INLINE [
    ACCESS, %FLAG_ADMIN, NTNAME
    ADMIN, Y, ACCOUNT_Running_the_QlikView_Server
    ADMIN, Y, Dashboard_Developer
];

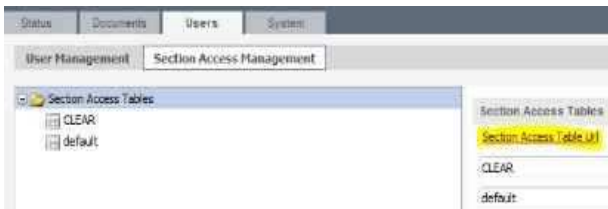
```

### 2. Section Access Table

The second part concatenates the fields from the section access table for the dashboard to the inline table. Add the section access table to the QEMC.



Note the section access table URL.



### 2. Section Access Script

This step tells the QlikView server what security table to use when refreshing the dashboard.

Within your QlikView client, follow the menu path: **Insert > Section Access > Publisher Authorization**. Enter the URL appropriate to the environment in which you are working.

Choose the appropriate values from the screens and get to Finish.

Your script will be populated to load the security from this table.

**Actions**

- [Edit document](#)
- [Report abuse](#)
- [Manage versions](#)
- [Move document](#)
- [Receive email notifications](#)
- [Send as email](#)
- [View as PDF](#)
- [View print preview](#)
- [Bookmark this](#)

**Bookmarked By (5)**

View:  ▾

**More Like This**

- [Introduction to Section Access](#)
- [Section Access - Data reduction on QVS SBE](#)
- [How to set-up QlikView Document Administration](#)
- [QV11\\_ServerPublisher\\_Course\\_FINAL\\_v1.1.pptx](#)
- [Manual de Refer&#234;ncia do Qlikview Server.](#)

**More by Tanya Kobyluk**

- [Show server PID in QMC for QVB.exe \(publisher tasks\)](#)
- [Capacity Management: Real-Time Visualization](#)
- [QEMC - task success/failure historical trending](#)
- [QEMC - automated failover](#)
- [QEMC - Ability to administer Document Administrators by LDAP group](#)

[View Tanya Kobyluk's profile](#)

```

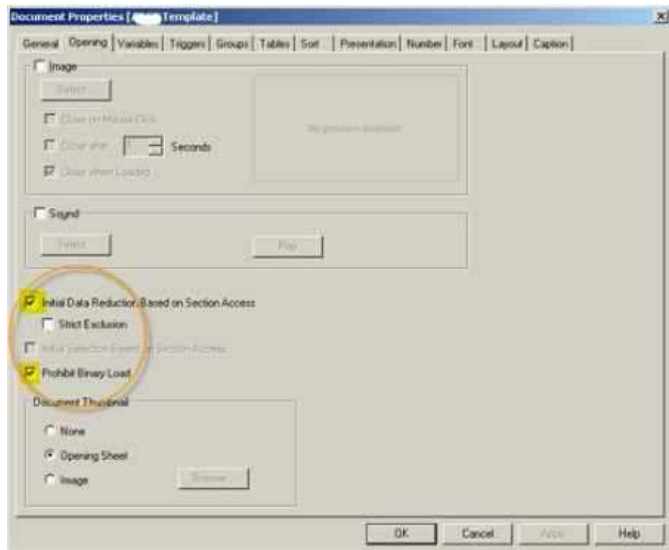
Section Access:LOAD [ACCESS],
    NTNAME,
    %FLAG_ADMIN
    SECROLE
FROM
[http://qvserver:4780/QMS/AuthTable]
(html, utf8, embedded labels, table is CLEAR);
Section Application;

```

### 2. Implement in Dashboard

Open the QWW. Choose Settings > Document Properties. Switch to the Opening tab.

Check **Initial Data Reduction Based on Section Access** and **Prohibit Binary Load** (but leave **Strict Exclusion** unchecked) and click OK.



Save the QWW. Reload the QWW.

The dashboard should now be applying security according to the security section access table. Keep in mind that if changes are made to the security section access table, they will not be available until after the next dashboard reload is completed.

1706 Views

Tags (edit): [section\\_access](#), [access\\_point](#), [v10](#), [distribution\\_task](#)

[Like \(1\)](#)

Average User Rating

My Rating:

(0 ratings)

#### Comments (0)

[Add a comment](#). Leave some feedback about this document.

There are no comments on this document.

## Follow Us

### Communities

#### Product Communities

- New to QlikView
- Development (QlikView Desktop)
- Deployment & Management
- Connectivity & Data Sources
- Integration & Extensions
- Mobile

#### Feature Communities

- Community Corner
- QlikView Labs
- QlikView Jobs

### Blogs

- The QlikView Blog
- Technical Bulletin
- Community Manager Blog
- QlikView Support Updates

### Groups

- New to QlikView
- Join Now
- Community Corner