

Qlik Sense November 2018

最新機能のご紹介

Qlik  LEAD WITH DATA™



Release Highlights: November 2018



Qlik Sense

Cognitive Machine Learning

Insight Advisor – Light Authoring

Comparative Analysis

Advanced Authoring Improvements

Dashboard Extensions Bundle

Chart Sharing (multi-cloud)

Visualization and Mapping Enhancements

Admin, Multi-Cloud, and Accessibility Improvements



QlikView

Skia graphics library

ICU library

Engine and reload performance logging

Support for IPv6 and .NET 4.7.2



Qlik NPrinting

On-demand reporting for Qlik Sense

Authentication and management improvements

The Qlik Cognitive Engine

Augmenting user intuition with machine intelligence

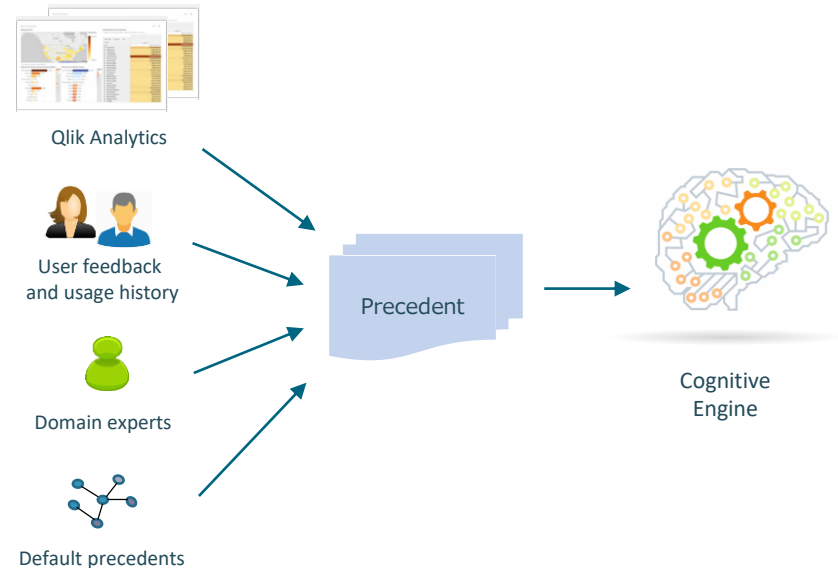


- A new augmented intelligence engine in Qlik Sense
- Supports insight suggestions and automation
 - Built for analytics insight, not visualization
 - Context awareness
- Leverages the Qlik Associative Engine
- Machine learning for improved recommendations over time

Precedent-Based Machine Learning

New

- Multi-source learning system adapts to improve accuracy and relevance over time
- Learning from multiple sources
 - User behavior and feedback
 - Qlik analytics and artifacts
 - Business definitions in governed libraries
- Planned additional sources
 - Industry specific and domain relevant knowledge
 - Social and organizational networks patterns and preferences
- Sophisticated default precedents

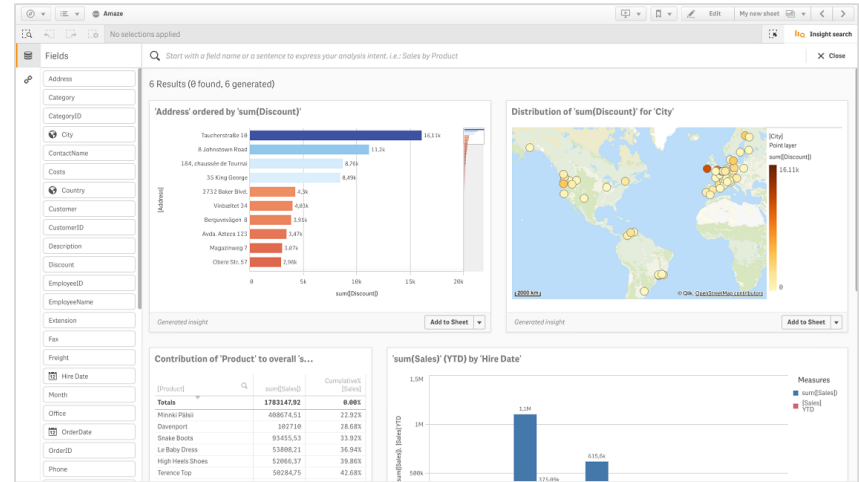


Insight Advisor

- Auto-generates and suggests the best insights for users to explore further
- Performs advanced analysis to generate and recommend insights
 - Based on the overall data set
 - Based on dimensions
 - Based on search criteria
- Auto-generates visualizations and analytics
- Allows users to add auto-generated insights directly to sheets

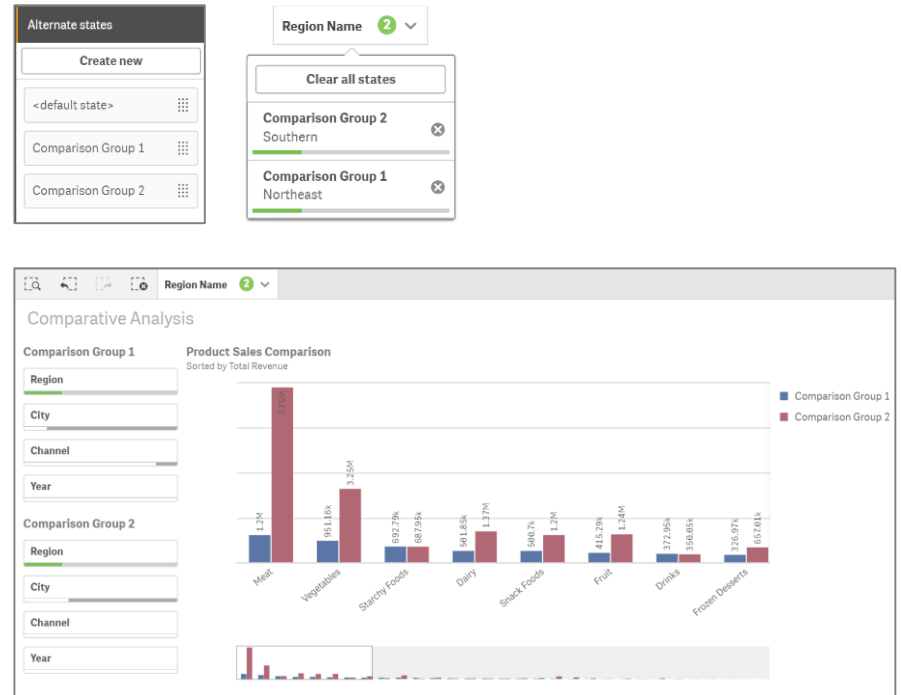
New

- *New machine learning capabilities for more relevant suggestions over time*
- *New light authoring allows users to change suggested visualizations and analytics for greater flexibility*
- Driven by the Qlik Cognitive engine



Comparative Analysis New

- Allows users to easily compare multiple groups of values to quickly spot similarities, differences, overlaps, and outliers
- Associative exploration enables interactive, user-driven comparison
 - Make interactive selections to define subsets of data for each group
 - Directly compare groups across multiple visualizations or together in a single chart
- Application creators enable user-driven comparative analysis
 - Define alternate states in master libraries
 - Create visualizations and objects based on alternate states
- Unlock new use cases for organizations to gain insights into relative performance



Advanced Authoring

- A variety of new capabilities for building more sophisticated analytics apps, including:

- Scrollable sheets
- Resizable grid
- Default bookmarks
- Custom sheet sizes

New

- Single selection in filter boxes
- Expression editor improvements
- Dynamic labeling
- Direct editing of master items
- Users controlled messages
- Self-service publishing

New

- New dashboard extension bundle

- Tested and supported by Qlik
- Date range picker
- Navigation button
- Tabbed container
- Show / hide container
- Variable input box
- On demand printing

Grid size

Small (24 x 12)	▼
Small (24 x 12)	
Medium (30 x 15)	
Large (36 x 18)	

Publish app

Script name
Choose the script you wish to publish your app to.

Marketing

App name
Give the app a name.

Computer Date

Cancel Publish

Drop down
Scatter

Input box
[10]

Slider
[31]

Buttons
Scatter Pie Distribution

Select data range

Select: 2016-07-20 2016-10-08

Today

Yesterday

Last 7 days

Last 30 days

This Month

Last Month

Range

Feb 2016							Mar 2016						
Su	Mo	Tu	We	Th	Fr	Sa	Su	Mo	Tu	We	Th	Fr	Sa
	1	2	3	4	5	6		7	8	9	10	11	12
7	8	9	10	11	12	13	6	7	8	9	10	11	12
14	15	16	17	18	19	20	13	14	15	16	17	18	19
21	22	23	24	25	26	27	20	21	22	23	24	25	26
28	29						27	28	29	30	31		

Clear

Select Excluded

Google

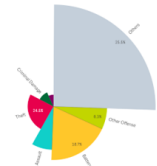
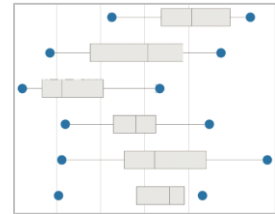
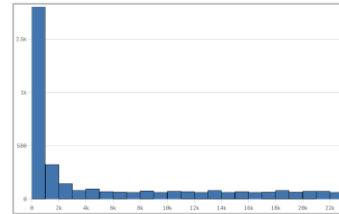
Toggle



Visualization Enhancements

- Several new chart types in Qlik Sense, including:
 - Histogram
 - Box Plot
 - Distribution Plot
 - Waterfall Chart
- New map object taking advantage of Qlik GeoAnalytics technology
- *New improvements to pie chart, allowing a second measure for displaying values in the outer radius – a.k.a. a Rose Chart*
- Additional visualization improvements

New

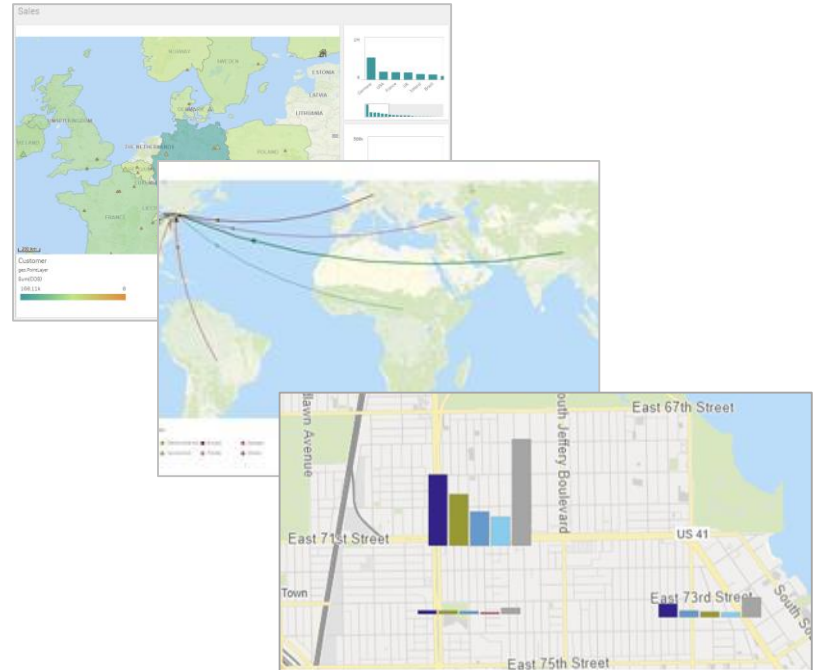


Multi-Layer Mapping

- Based on GeoAnalytics technology
- Multiple layers, including line and density layers with layer control, zoom levels, and draw order
- Shapes for point symbols, including squares, triangles, pentagons
- Dynamic name lookup (location service), for countries, divisions, cities, postal codes etc.

New

- *New chart layer for displaying information (pie or bar charts) on top of maps*
- More background maps with English or local names
- More projections, including Mercator & Adaptive
- New configuration options – explicit location, color, size
- Circle select with distance measure
- Labels and drill-down support
- Support for large data volumes



その他

Import Export App enhancements

Outline opacity setting

Sharable Qlik Sense chart links

Multi-Cloud Developments

Accessibility



qlik.com/AI