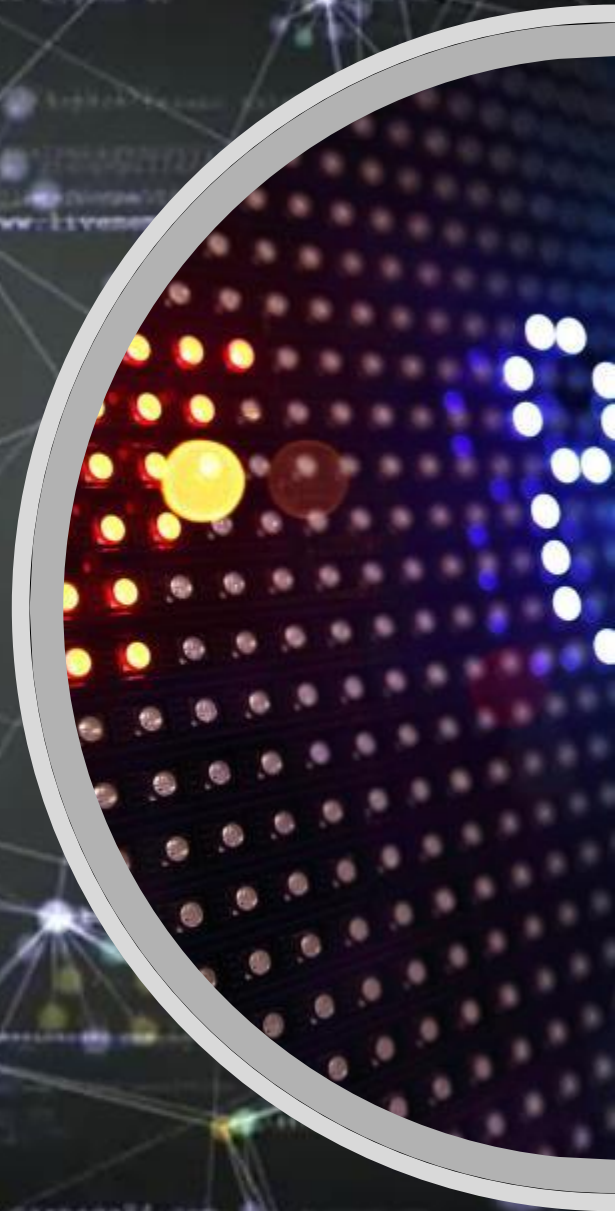


# HT ENVOI DE MAIL

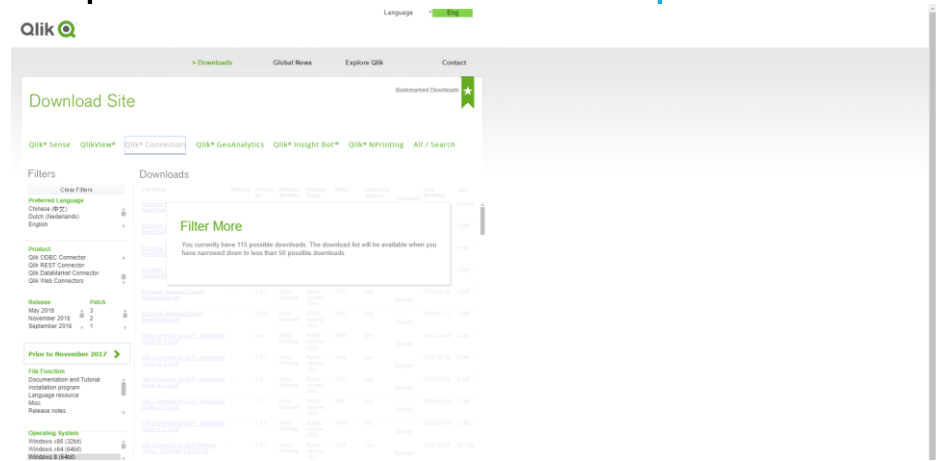


# PRÉAMBULE

Ce document a pour but de lister les différentes étapes de mise en place des Web Connector

# TÉLÉCHARGEMENT DES WEB CONNECTOR

Etape 1 : Aller sur le site <https://eu-a.demo.qlik.com/download/>



Etape 2 : Sélectionner GeoAnalytics dans le menu

Etape 3 : Sélectionner dans la liste de sélection Qlik GeoAnalytics for QlikSense

Etape 4 : Télécharger le .zip

## Downloads

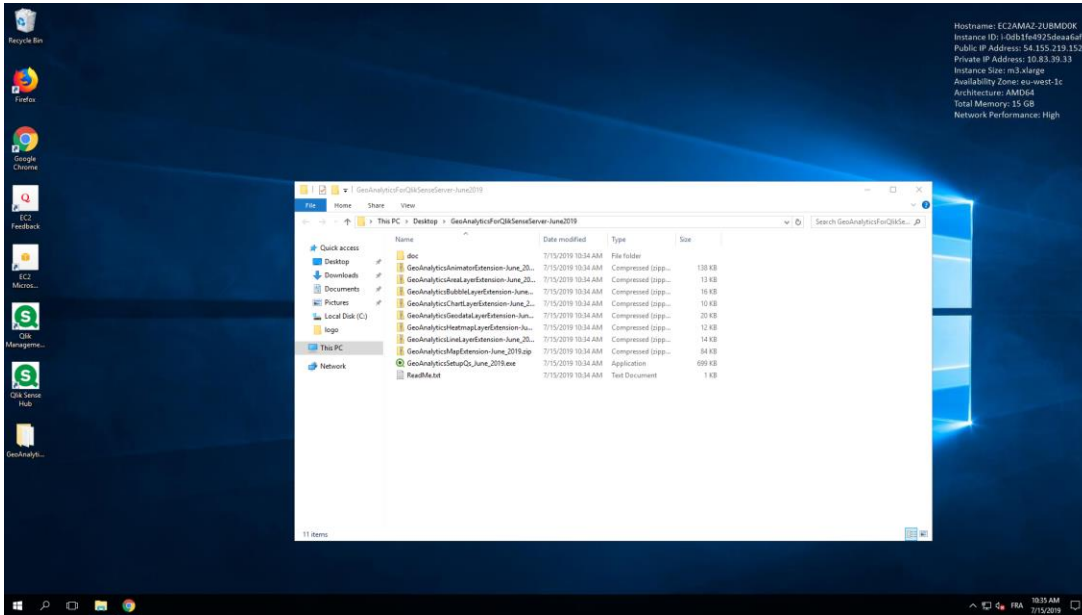
| File Name  | Release   | Version No | Release Number  | Release Stage       | Build | Operating System    | Language | Last Modified | Size    |
|--|-----------|------------|-----------------|---------------------|-------|---------------------|----------|---------------|---------|
| <a href="#">GeoAnalyticsForQlikSenseDesktopSe June2019.exe</a> | June 2019 | 5.17.3     | Initial Release | Public release (GA) | 31234 | Windows x64 (64bit) | English  | 2019-06-25    | 1003 KB |
| <a href="#">GeoAnalyticsForQlikSenseReleaseNo June2019.pdf</a> | June 2019 | 5.17.3     | Initial Release | Public release (GA) | 31234 | Windows x64 (64bit) | English  | 2019-06-25    | 143 KB  |
| <a href="#">GeoAnalyticsForQlikSenseServer- June2019.zip</a>   | June 2019 | 5.17.3     | Initial Release | Public release (GA) | 31234 | Windows x64 (64bit) | English  | 2019-06-25    | 912 KB  |

Titre de la partie

# INSTALLATION (1/2)

Etape 1 : Dézipper le .zip

Etape 2 : Mettre le dossier extrait dans un dossier

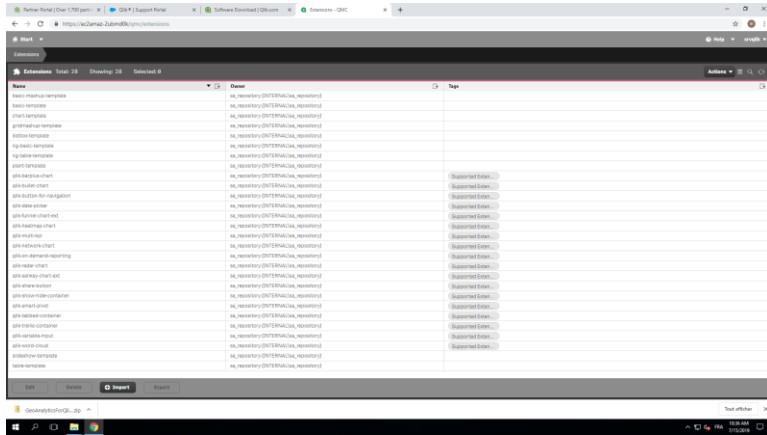


Etape 3 : Ouvrir le dossier et la QMC

Etape 4 : importer les 8 extensions

# INSTALLATION (1/2)

Etape 5 : aller dans l'onglet extension



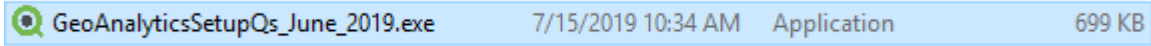
Etape 6 : cliquer sur le bouton import

Etape 7 : sélectionner les extensions dans le dossier

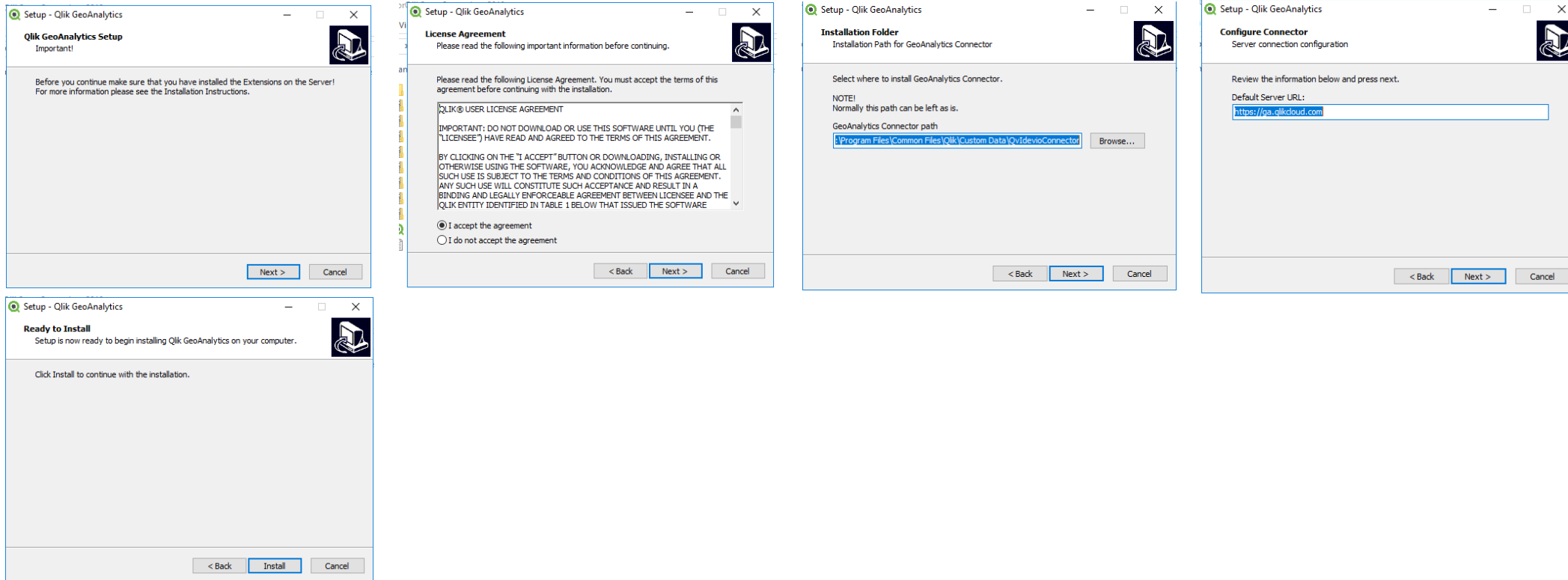
|                    |                                   |
|--------------------|-----------------------------------|
| idevioanimator     | srvqlik (EC2AMAZ-2UBMD0K\srvqlik) |
| idevioarealayer    | srvqlik (EC2AMAZ-2UBMD0K\srvqlik) |
| ideviobubblelayer  | srvqlik (EC2AMAZ-2UBMD0K\srvqlik) |
| ideviochartlayer   | srvqlik (EC2AMAZ-2UBMD0K\srvqlik) |
| ideviogeodatalayer | srvqlik (EC2AMAZ-2UBMD0K\srvqlik) |
| idevioheatmaplayer | srvqlik (EC2AMAZ-2UBMD0K\srvqlik) |
| ideviolinelayer    | srvqlik (EC2AMAZ-2UBMD0K\srvqlik) |
| ideviomap          | srvqlik (EC2AMAZ-2UBMD0K\srvqlik) |

# INSTALLATION (1/2)

## Etape 8 : cliquer sur l'exé



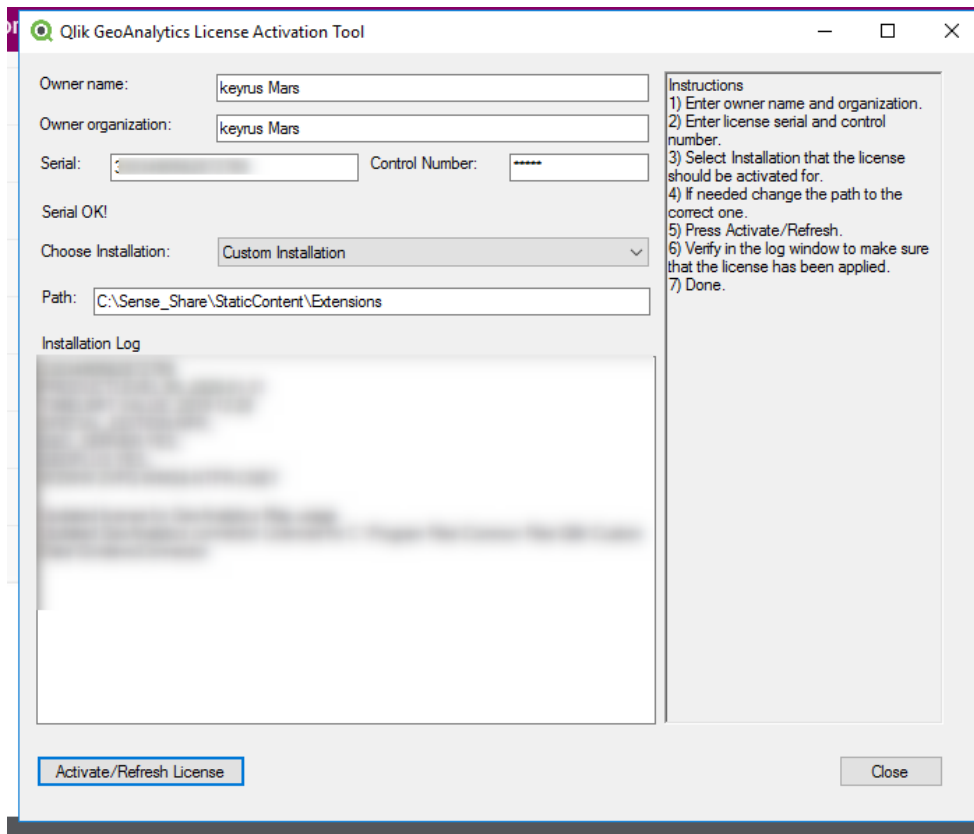
## Etape 9 : cliquer sur suivant



# INSTALLATION (1/2)

Etape 10 : paramétrer la licence

Etape 11 : dans le path mettre le chemin du répertoire où se trouve le static content



Etape 12 : Cliquer sur activate





# Download Site

Bookmarked Downloads

Qlik® Sense QlikView® Qlik® Connectors Qlik® GeoAnalytics Qlik® Insight Bot™ Qlik® NPrinting All / Search

## Filters

Clear Filters

- Preferred Language**
- Chinese (中文)
  - Dutch (Nederlands)
  - English

- Product**
- Qlik GeoAnalytics Plus**
  - Qlik GeoAnalytics For QlikView
  - Qlik GeoAnalytics Server
  - Qlik GeoAnalytics For Qlik Sense

- | Release       | Patch |
|---------------|-------|
| June 2019     | 31234 |
| April 2019    | 31233 |
| February 2019 | 31232 |

**Qlik GeoAnalytics 5.8.2 and earlier**

- File Function**
- Documentation and Tutorial
  - Installation program
  - Release notes
  - Language resource
  - Misc

- Operating System**
- Windows x86 (32bit)
  - Windows x64 (64bit)

## Downloads

| File Name   | Release   | Version No | Release Number  | Release Stage       | Build | Operating System | Language | Last Modified | Size  |
|---|-----------|------------|-----------------|---------------------|-------|------------------|----------|---------------|-------|
| <a href="#">GeoAnalyticsPlus64bitSetup-June2019.exe</a>       | June 2019 | 5.17.3     | Initial Release | Public release (GA) | 31234 | Any              | English  | 2019-06-25    | 4 MB  |
| <a href="#">QlikGeoAnalyticsPlusReleaseNotes-June2019.pdf</a> | June 2019 | 5.17.3     | Initial Release | Public release (GA) | 31234 | Any              | English  | 2019-06-25    | 96 KB |



# Java superieur 7

