



Qlik Deployment framework

[Read Me](#)

August, 2018





Table of Contents

Version 1.7.2	3
Qlik Deployment Framework Deploy Tool	3
Prerequisites	3
Deployment modes	3
QDF Deploy Tool Install	4
Container Type Selector	4
Install QVC library option	4
Install QDF	5
Active framework	6
Upgrade	7
Documentation	8
Add shortcuts to jump between QDF environments	9
Stretch Deploy Tool	9
Support Statement	10
Release notes and Known Issues	10
QlikView 11 SR13+ and QlikView 12 additional notes	10

Version 1.7.2

Qlik Deployment Framework Deploy Tool

Deploy tool is an installation and maintenance tool for a Qlik Deployment Framework environment. The container script code is open source available on GitHub approved updated will be incorporated into the deploy tool that also updates existing frameworks to latest standard.

Prerequisites

- Microsoft Net 4.x Framework is needed to run the Deploy Tool
- The Deploy Tool have been tested on Windows 7, Windows 8, Windows 10 and Windows 2012 Server

Deployment modes

Qlik Deployment Framework Deploy Tool can run in several different modes:

- **QDF Install** – (Default) will extract the QDF framework including tools, examples and documentation. There are three different Container designs to choose between.
- **Add/update Containers** – if the Deploy path URL points to a valid framework the deploy tool will automatically present available containers. From here you can add new containers and/or upgrade the system
- **Upgrade** – if active framework is identified upgrade options will be available.
 - **Upgrade** – the deploy tool identifies a newer version, you are recommended to upgrade
 - **Upgrade unknown** – the deploy tool could not identify the current version, you are recommended to upgrade to latest QDF.
 - **Reinitiate** –replaces the framework built in scripts (within all containers), re-initiation can be done if Qlik scripts been compromised or minor fixes replacing the same framework version.

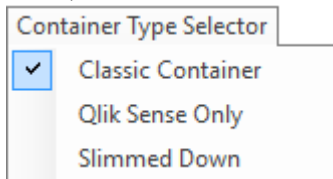
Automatic upgrade from 1.x.x to 1.7.1 via the deploy tool, just point Deploy Path URL to your QDF root folder and the deploy tool will suggest to upgrade. Only vanilla QDF should be upgraded automatically, internal QDF script code (.qvs) will be updated so any custom modifications would be removed.

QDF Deploy Tool Install

In this section we will address framework installation. This is a straight forward job, just select a suitable location and deploy. Before deploying you can also select container type other than default.

Container Type Selector

From QDF version 1.7 you have the **option** to select between three container layouts before creating the container structure. This mean that QDF Deploy tool extracts different folder layouts depending on the selection done in the *Container Type Selector*. The different options with correlating layout are presented below, remember that selecting a layout is not mandatory.



- **Classic Container (default) traditional QDF container layout (from version 1.0)**
- **Qlik Sense Only** everything related to QlikView have been removed, for example Application and mart folders. Extract, Transform, Load folders have been added under the QVD structure.
- **Slimmed Down** is intended for smaller deployments and several folders have been removed. Extract, Transform, Load folders have been added under the QVD structure.

Classic Container	Qlik Sense Only	Slimmed Down
<ul style="list-style-type: none"> ▼ 1.Example <ul style="list-style-type: none"> > 1.Application 2.QVD > 3.Include > 4.Mart > 5.Config > 6.Script 7.Export 8.Import > 9.Misc 	<ul style="list-style-type: none"> ▼ 1.Example <ul style="list-style-type: none"> ▼ 1.QVD <ul style="list-style-type: none"> 1.Extract 2.Transform 3.Load > 2.Config > 3.Include 4.Export 5.Import > 6.Misc 	<ul style="list-style-type: none"> ▼ 1.Example <ul style="list-style-type: none"> > 1.Application ▼ 2.QVD <ul style="list-style-type: none"> 1.Extract 2.Transform 3.Load > 3.Include > 4.Config 5.Import

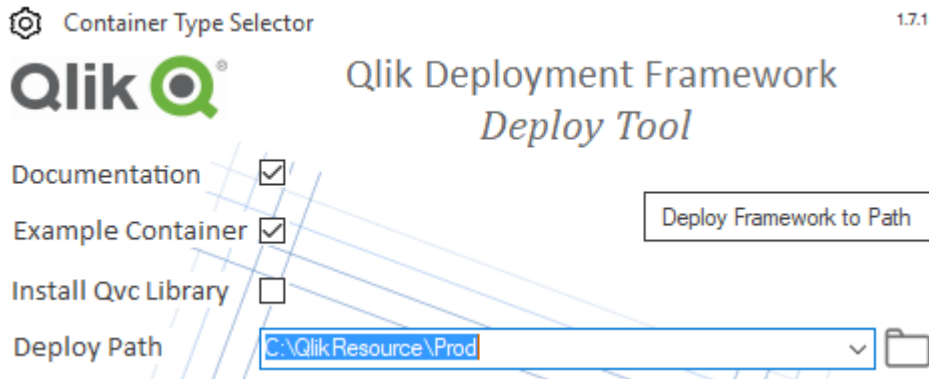
Install QVC library option

QlikView Components (QVC) is an open source library that can optionally be installed using the deploy tool. QVC works as an extension of the built-in QDF library, read more on [QVC here](#). If QVC been installed it can be disabled in the script by adding this line before QDF initiation:

```
set vG.QVCDisable='true';
```

Install QDF

1. Execute QlikDeploymentFramework.exe from a computer that has access to the framework install URL (UNC or physical path). Please note that the extracted content should be accessed by QlikView and/or Qlik Sense. It can also be on a SAN device that Qlik has been configured to use.
2. The **Deploy Tool** window should appear.
3. Type a location in the **Deploy path** or click on the folder icon to brows on disk. This is the framework extract location.

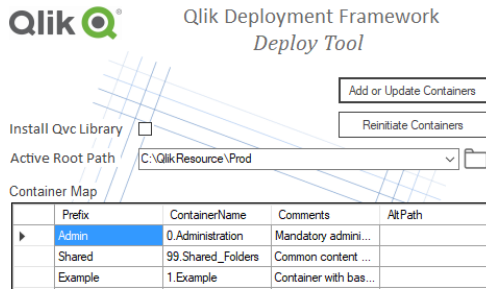


4. **Documentation** will be extracted into a Documentation folder under Extract location. Uncheck the *Documentation* check box to prevent extraction of the documentation.
5. If **Example Container** box is checked (default) an example container will be added. This container can later be removed if not needed.
6. Press **Deploy Framework to Path** this will extract the framework and create at least the default containers *0.Administration* and *99.Shared_Folders* into *Deploy Path* location. The additional Example Container can be deleted if need be, it contains examples used in the exercise document.
 - 0.Administration
 - 1.Example
 - 99.Shared_Folders
 - Documentation
 - Version1.6.5.txt
7. After initial deployment is done additional containers can be created. Read **Active framework** section on how to create additional containers using Deploy Tool.
8. Read **Qlik Deployment Framework-Getting Started Guide** stored under the Documentation folder for more information after the setup.
9. Several framework instances can reside side by side, for example Development, Test and Production framework. Read more later how to add shortcuts to jump between frameworks.

Active framework

After the initial deployment is done it's possible to add additional containers using the deploy tool. Active frameworks are identified automatically when adding a correct URL. Deploy tool will store last used URL to make it easy to continue.

1. When active framework is found the Deploy path text will change to **Active Root Path**. Also *Documentation* and *Example Container* check boxed will be removed.



2. From the Containers grid additional containers can be typed and generated

Prefix	ContainerName	Comments	AltPath
Admin	0.Administration	Mandat...	
Shared	99.Shared_Folders	Commo...	
Example	1.Example	Contain...	
Corp	4.AcmeCorp		
SAP	1000.System\1.SAP		
SQL	1000.System\2.SQL		

3. Container properties:

- **Prefix** is a **unique** short name for company department or project, a “container identifier”. This is used when mounting containers and by other functions within the Qlik load scripts. Do not use long names or spaces, remember that this is a unique value.
- **Container Name** is the physical container name presented on the file system, could be department, data source or project. This url can also include backslash that will generate subfolders within the framework, examples:
 - **1.AcmeCorp**
 - **100.DataSources\1.SQL**
- **Comments** (optional) is used as descriptive meta-data, will be presented during script load.
- **AltPath** (optional) is used if creating a container into alternate location, example *C:\QlikTempContainers*

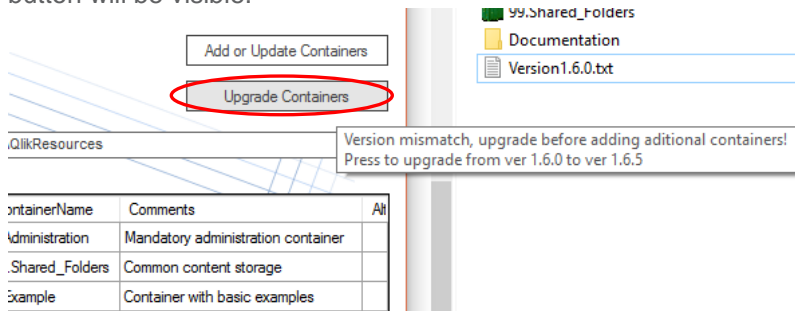
4. To create the new containers press:

Add or Update Containers

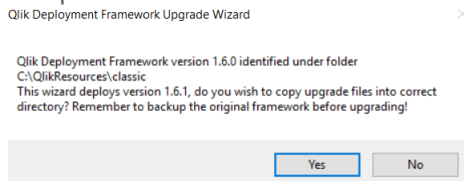
Upgrade

Older Qlik Deployment Framework is identified automatically. It is aware of the older version from the folder path put in the **Extract location** box. The QDF version is identified by the Versionxxx.txt file under *0.Administration* folder.

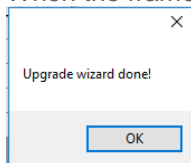
1. If an older version is identified it's a good idea to upgrade. If this is the case the *Upgrade Container* button will be visible.



2. Hover over the Upgrade button to validate identified versions as shown above.
3. Press **Upgrade** to start the wizard. You will get an information box, **back up the original framework** and press **Yes** to continue or No to cancel and go back into Deploy Tool.



1. When the framework is upgraded this box will appear.



If any error messages appear open the *logger.txt* file for more info.

Documentation

If the documentation box is checked during deployment a Documentation folder with pdf files is created alongside the framework. Documentation files installed are depended on the selected container type.



The documentation available are as follows:

- **Getting Started Guide** for QlikView and Qlik Sense is the document to read as soon as the first framework have been initiated.
- **Exercises** for QlikView and Qlik Sense is a good way to learn and understand how to use QDF
- **Function Reference Guide** contains all the functions and operators available.
- **Development Guide** for QlikView and Qlik Sense contains development best practices
- **Integrated Development Environment** is a step by step guide on how to setup an IDE including version control
- **Qlik Product Delivery process** describes (examples) of several high-level delivery processes of the Qlik product

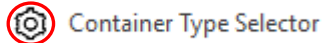
Below is the documentation matrix depending on container type selected.

Qlik Deployment Framework- <i>Documentation name</i>	Classic Containers	Qlik Sense Only Containers	Slimmed Down Containers
Qlik Sense Getting Started Guide	X	X	X
QlikView Getting Started Guide	X		X
Qlik Sense Exercises	X	X	X
QlikView Exercises	X		X
Function Reference Guide	X	X	X
Qlik Sense Development Guide	X	X	
QlikView Development Guide	X		
Integrated Development Environment	X	X	
Qlik Product Delivery process	X	X	





Add shortcuts to jump between QDF environments

From QDF 1.7.1 it's possible to create "shortcuts" to quickly toggle between multiple QDF environments. This could be practical when jumping between environments in a DTAP street (Dev ->Test ->Acc ->Prod)

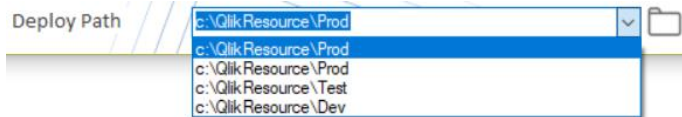
1. First open the settings menu by selecting the gear icon to the upper left.



2. In the settings form add available QDF environments (max 4), remove URL to hide the rows not used. Type the correct URL or brows using the folder icon. When done Press X to leave settings.

Environment 1	<input type="text" value="C:\QlikResource\Dev"/>	
Environment 2	<input type="text" value="C:\QlikResource\Test"/>	
Environment 3	<input type="text" value="C:\QlikResource\Prod"/>	
Environment 4	<input type="text"/>	

3. Each environment is represented as a shortcut available in the main dropdown panel, drill down and select suitable environment.




Stretch Deploy Tool

From 1.7.1 it's possible to stretch out deploy tool to get window size to fit the text. Just hold and drag the bottom right corner.

Container Map

	Prefix	ContainerName	Comments	AltPath	
▶	Admin	0.Administration	Mandatory administration container		▲
	Shared	99.Shared_Folders	Common content storage		
	Example	1.Example	Container with basic examples		▼



Support Statement

Please note that the Qlik Deployment Framework is not a Qlik product and is not supported by Qlik customer support. It is supported by community members of the Qlik Deployment Framework Group. Members include Qlik employees, partners, customers and enthusiasts. Members may start a discussion, report a problem and receive the latest updates on the QDF software and documentation.

Release notes and Known Issues

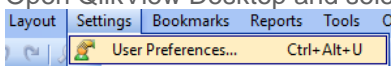
- Container icons do not work under Windows XP (legacy product).
- QlikView only: Variable Editor may not work with Windows XP (legacy product) in combination with UNC path, please mount the path with a drive letter.
- QlikView only: Qlik Deployment Framework tools are designed for high resolution screens. There is a possibility that text and window dialogue boxes not be formatted correctly.
- QlikView only: User Access Control (UAC) in combination with the folder `c:\ProgramData\QlikTech\Documents` as QDF repository will disable QlikView's write capability making Variable Editor to crash. The work around is to first execute Qlik Developer with elevated privileges (Run as Admin) and after open Variable Editor. This scenario can also occur in other folders if Windows is locked down. Read Operations Guide for more info.
- A hidden system file called `InitLink.qvs` exists in every container root, do not remove this file.

QlikView 11 SR13+ and QlikView 12 additional notes

QlikView only: Using QlikView and Variable Editor Application

In later QlikView releases security have become stricter and some additional settings need to be added to run command line executions within QlikView. There is one setting that need to be checked in to get full functionality in Variable Editor.

1. Open QlikView Desktop and select Settings/ User Preferences. A User preferences box will appear



2. Change to Security tab and check in **Script**. And press Apply

