

# Instant Sense App - Overview

**Quick Intelligence**

The Quick Intelligence Instant Sense App allows you to load any data set into the template application, providing metadata for the set via a spreadsheet, which can then be explored through any of twelve pre-configured sheets. Users can then explore by selecting dimensions and measures within each scenario. From top level KPIs through to a table with a selection of any six measures and dimensions, insights can be gained from a helicopter view right down to the detail needed to drive precise decision making.



## KPIs

Select up to eight of the pre-defined expressions to view as a KPI. Each expression is trended over time, select to view by month or year.



## Map

See where things are occurring. Select one of the five area types and any one of the available expressions to plot values on the map. Select by lasso or radius.



## Trend Top Twenty

Select one expression, one dimension and a trend type to see how different dimension values compare to each other over time. Limited to 20 in each period.



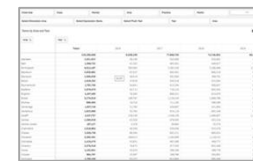
## Select Dimension

Select one dimension from the data and view up to six selected expressions broken down by this dimension. Click on charts to select dimension values and drill in.



## Trending

See trends for six selected expressions, by month or year. See where situations are changing over time. Make dimension selections to see subsets of data.



## Pivot

Select any one expression, one standard dimension and one secondary dimension to pivot that expression. Can show values over time, or you can pick a non time-based secondary dimension.



## Select Expression

Select a single expression that you wish to explore. This expression is charted against six selected dimensions, to help find the most significant.



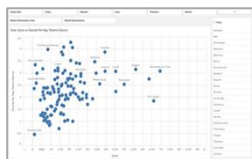
## Year on Year

Explore seasonality by comparing the same month against previous years, for six selected expressions.



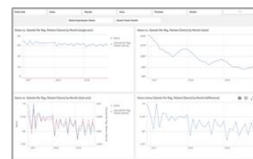
## Select Table

Build any data set you wish, with up to six dimensions and six measures. This can then be exported for further analysis. Can show from two to twelve columns with data aggregated to suit.



## Scatter

Select a pair of expressions to plot on the axis of a scatter chart. The points on the chart can be any selected dimension. Wheel your mouse, or lasso points on the scatter to drill in.



## Trend Compare

Select two expressions to see how they compare over time. View them on the same axis, separate axis, the relationship and the difference. All by month or year.



## Profiler

A look under the bonnet at the source data. Pick any field and see a list of the distinct values in that field. The chart shows the number of times each value occurs in the data.

The application is provided at no cost, without any warranty or support. It can be modified and used in any environment, but credit must be given to **Quick Intelligence** where substantial portions of the original application remain in place. The application is not intended to be a finished analysis product, rather it is a quick and easy way to get a first look at your data. This can then inform the building of a subsequent app. For the latest version of the app, and information on using it, please visit <https://www.quickintelligence.co.uk/isa>