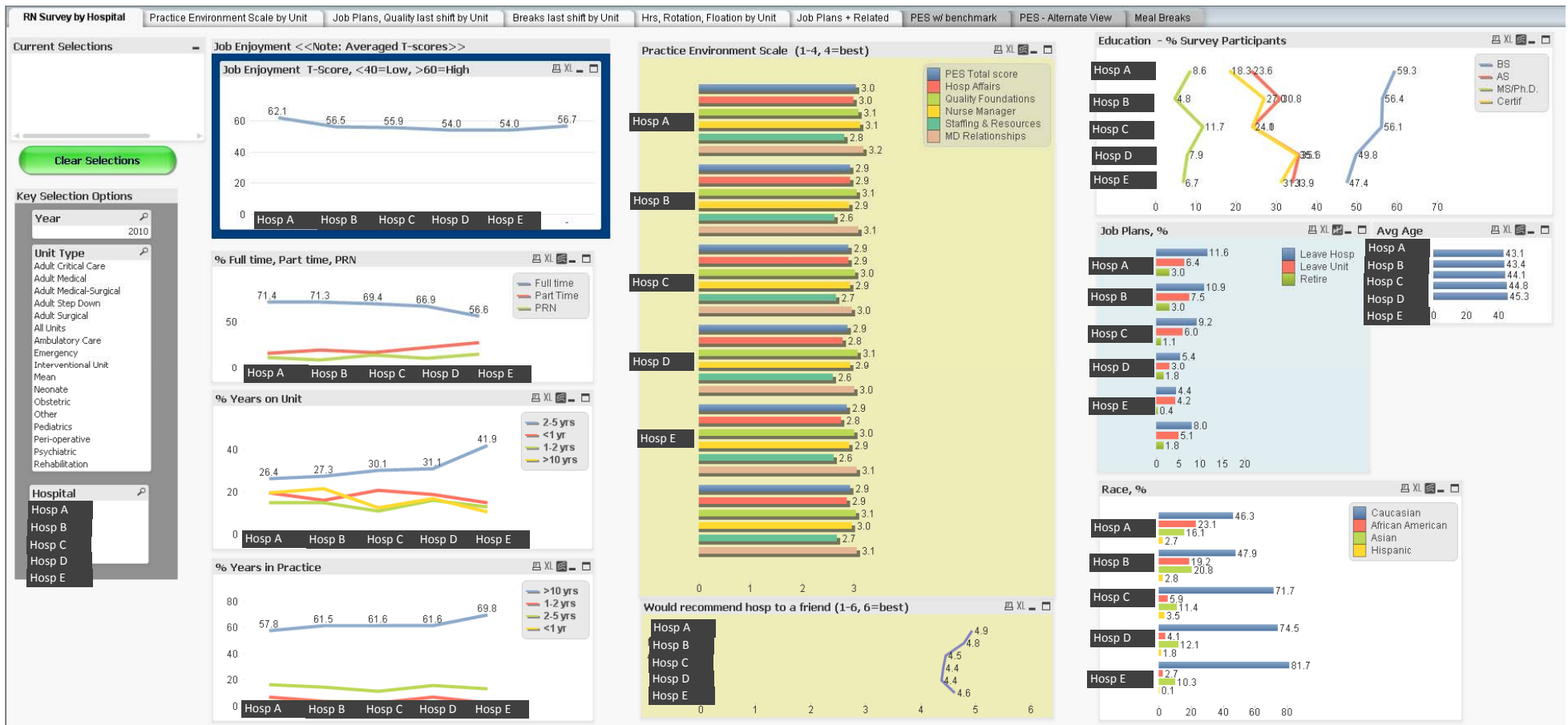
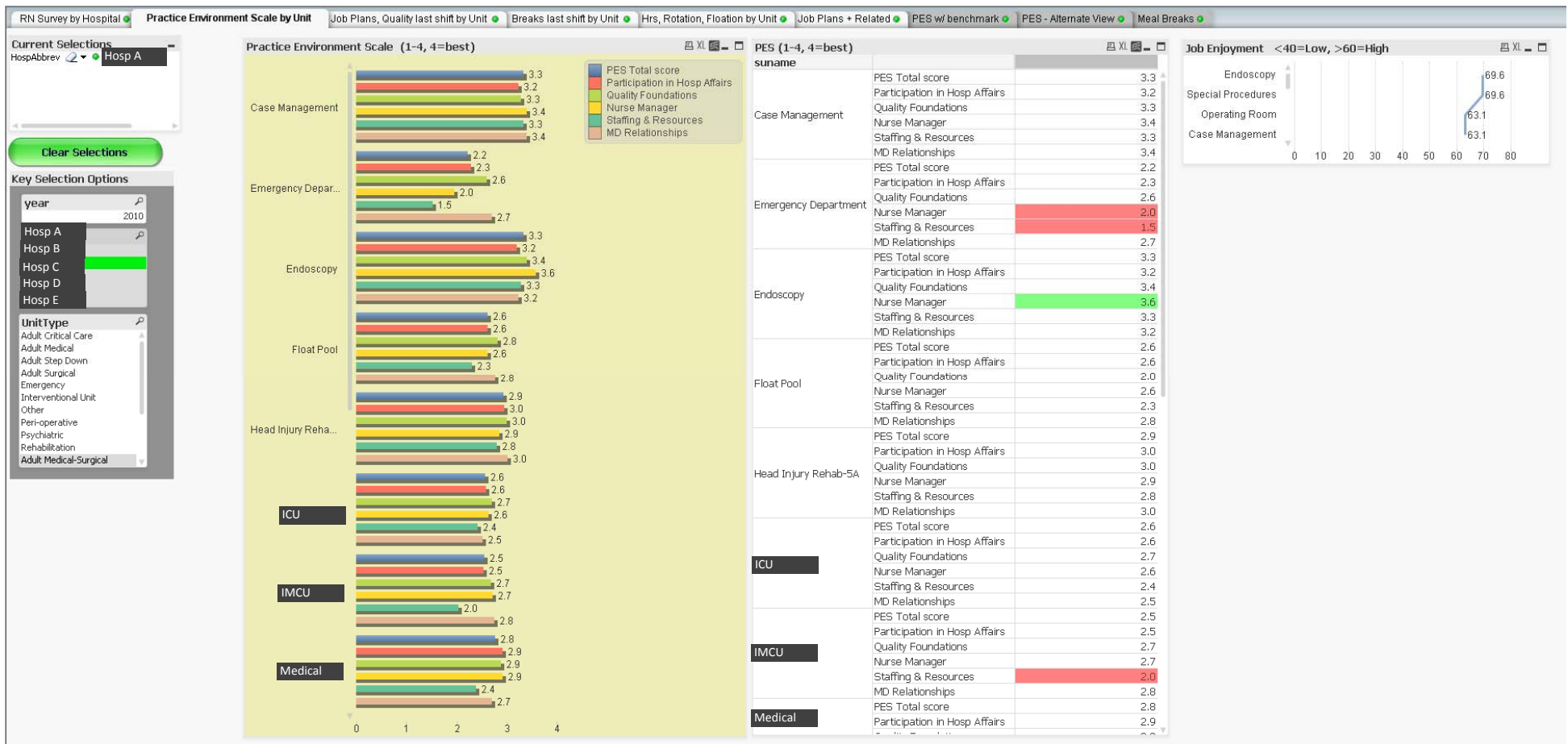


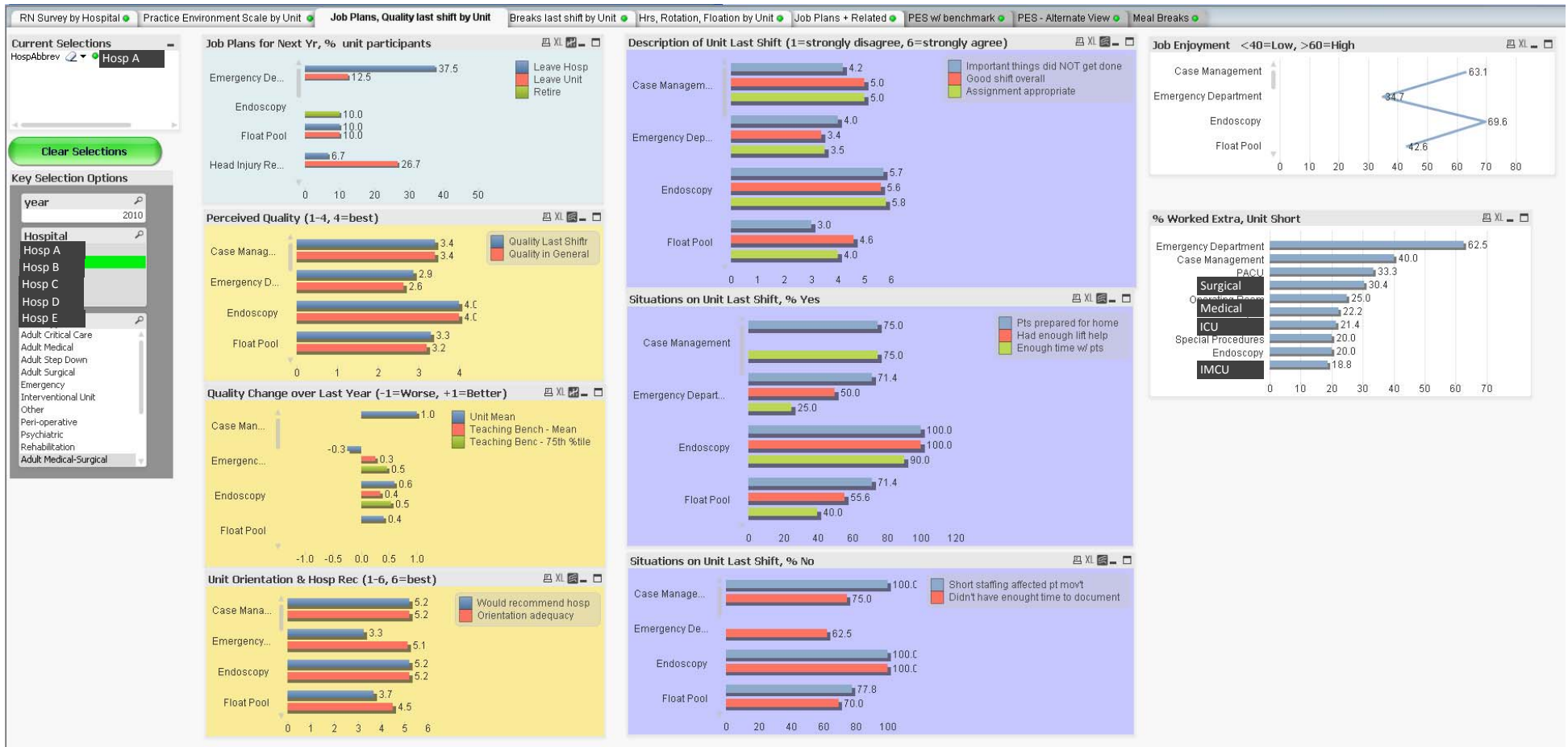
NDNQI RN Survey – Snapshot view by hospital. Since NDNQI does not provide cross-hospital reports, this dashboard provides new viewing capabilities to the Chief Nurse Officers of hospital systems. In addition, users can drill down by Unit Type to see how different groupings of units such (e.g. Intensive Care Units) are performing across the system.



NDNQI RN Survey – Environmental Scale by Unit. In this screen, the user has clicked on a particular hospital and is viewing that hospital’s units. The second column is an alternate view of the same data, where high and low values are color coded to highlight “exemplar” and “challenge” areas at glance. Users can quickly click on another hospital name to view the same detailed information for other hospitals in the system.



NDNQI RN Survey – Job Plans, placed up against related information, including perceived quality change over the last year, and unit situations last shift. This allows Leadership at both the system and hospital level to identify where retention will be an issue, identify potential underlying issues so that retention efforts can be focused.



NDNQI RN Survey – Professional Environment Survey, with benchmarks at the Unit Level.

