

How to Configure NPrinting Service

You can download this tutorial by clicking here: "[How to Configure NPrinting Service](#)".

NPrinting can be run as a Windows service to execute scheduled jobs, External XML Request, and On-Demand reports. The NPrinting service does not require any user to be logged on to the machine to run because it does not run on a user session. The service may also start up without any manual intervention every time the machine is re-started if the "Start Type" is set to "Automatic" because it is a Windows service.

NPrinting Service can be configured to use:

- NPrinting NSQ files which contain the tasks and scheduled jobs you want it to execute
- Folders that contains NSQ files. All NPrinting projects saved in the configured folders will be executed
- It is no longer necessary to insert On-Demand NSQ files and NPrinting projects (.nsq files)

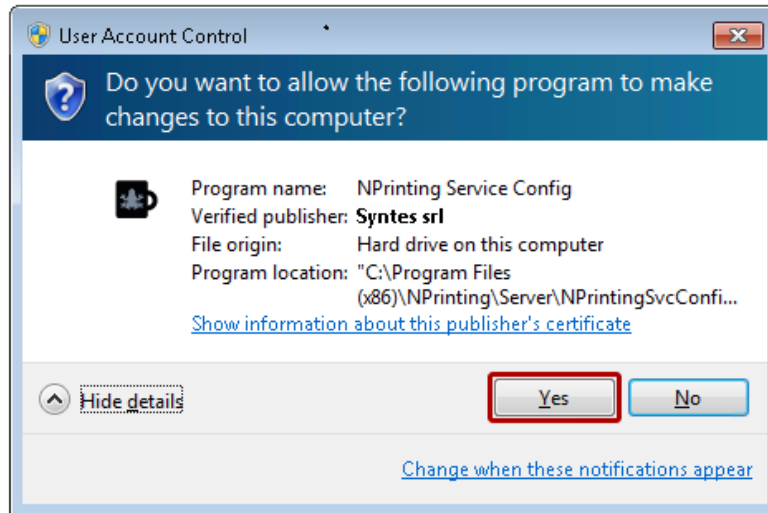
You can also assign a source folder to NPrinting Service for External XML Request reporting. NPrinting Service regularly checks for new XML files with the **.request** extension in the defined source folder, parses any new ones it finds, executes the contained instructions, and renames the file by changing the **.request** extension to **.processed**. It then writes information into a new file about what Task(s) or Job(s) that were run and their outcome. Finally it names the file with the **.result** extension. You can find detailed information about the syntax of these XML files and how the process works in this [How to Execute NPrinting Reports by External XML Request](#) tutorial.

Note:

- You have to be an administrator on the computer to configure NPrinting Service
- The service will no start if the chosen .nsq file is no longer valid. For instance, when the .nsq is saved with a client with a different version than the server.

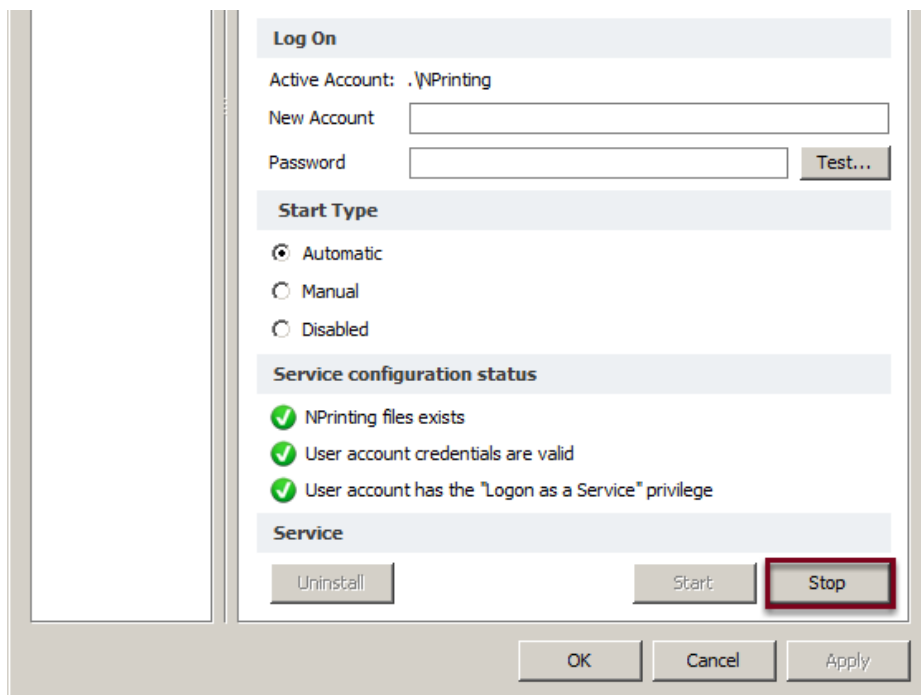
When you install **NPrinting Server**, **NPrinting Management Console** is also installed as a component and is the GUI for configuring automated report generation and distribution. Launch NPrinting Management Console by clicking on its desktop or taskbar icon or searching for **NPrintingSvcConfig.exe** and double clicking on it.

Permit NPrinting Service Config to Make Changes



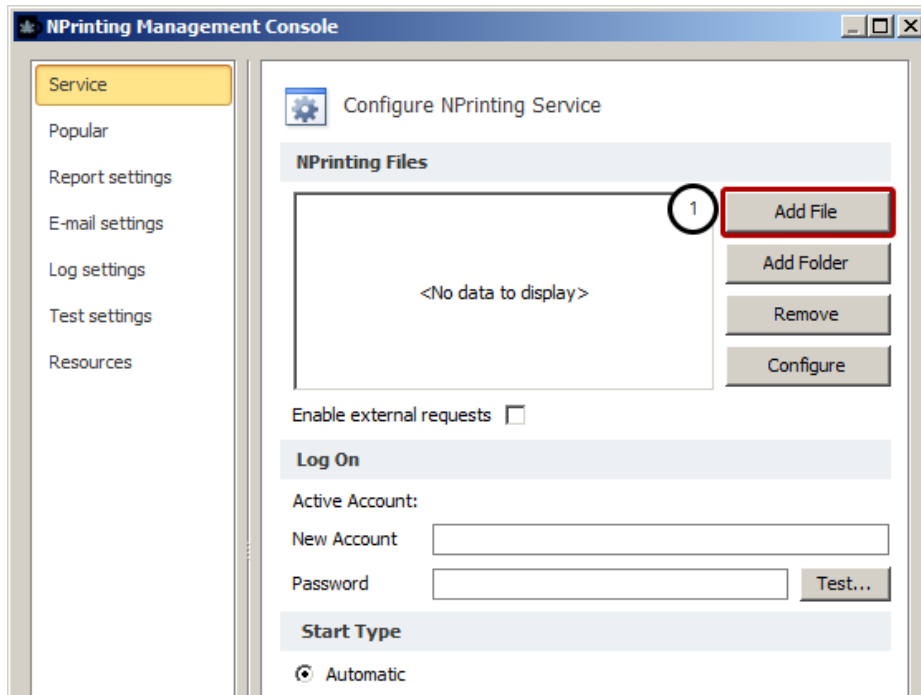
The first thing that happens when you start NPrinting Management Console up is the User Account Control window pops up. Click on the Yes button to proceed.

Stop the NPrinting Service



The Service page is pre-selected. Stop the server if it's running to be able to configure it. Skip this step if the service is stopped.

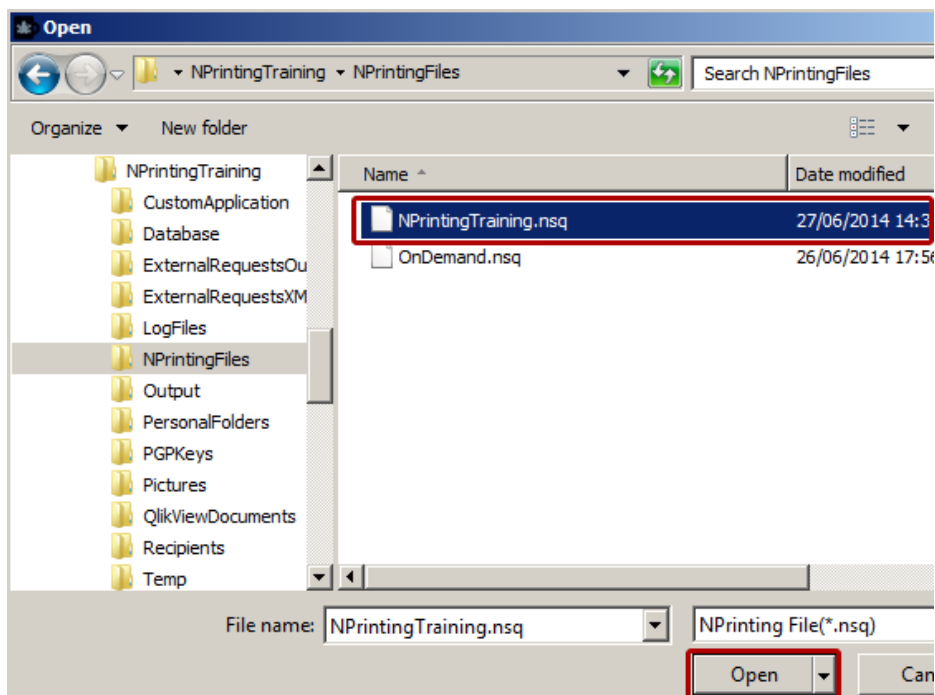
Adding NPrinting Project Files



1. Click on the Add File button

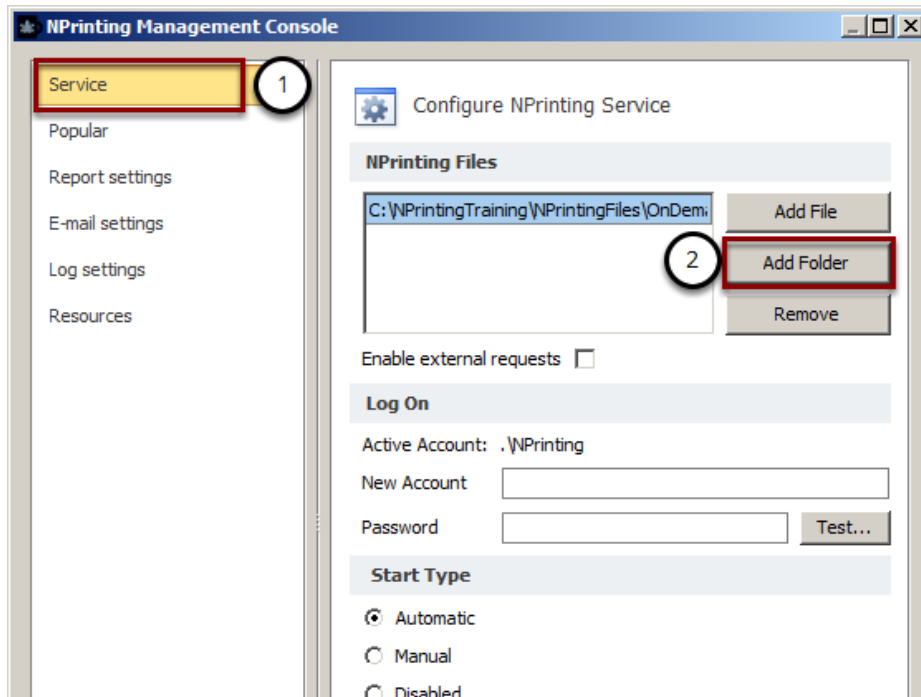
All paths to NPrinting files saved on computers different from the one running NPrinting Service must be absolute paths (e.g. \\Server\NPrinting\Templates - NOT Z:\NPrinting\Templates).

Select NPrinting Project Files



1. Browse to C:\NPrintingTraining\NPrintingFiles\ and select NPrintingTraining.nsq
2. Click on the Open button

Adding an NPrinting Project Folder

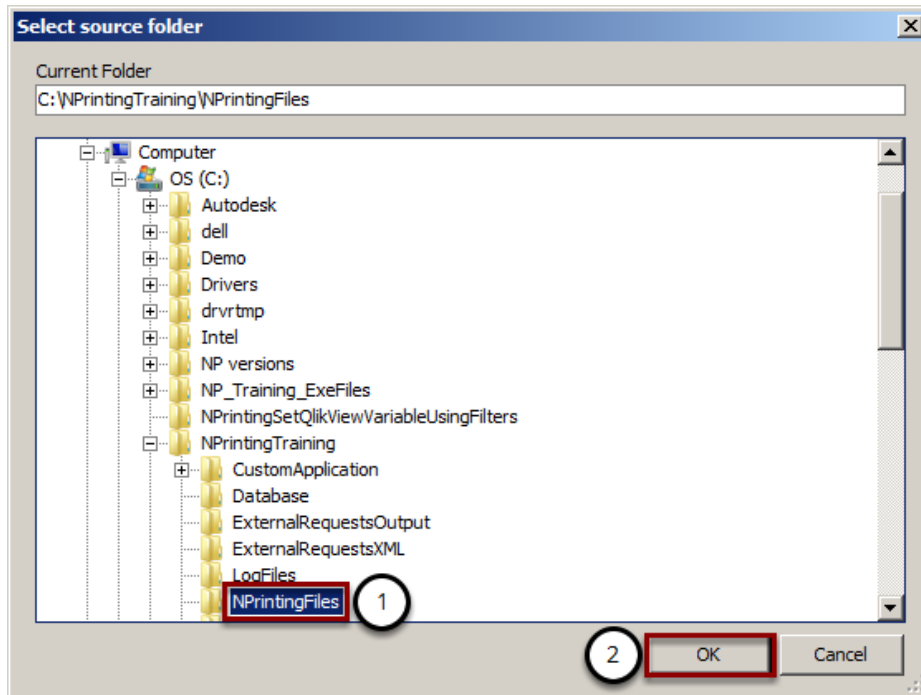


It's also possible to add an entire folder. All NPrinting projects (.nsq files) contained in the folder will be scheduled. Add an empty folder to save the .nsq files when they are ready. The Jobs will be automatically executed after saving. This could be useful if you prefer not to permit a developer to access the server configuration.

1. The **Service** page is pre-selected
2. Click on the **Add Folder** button

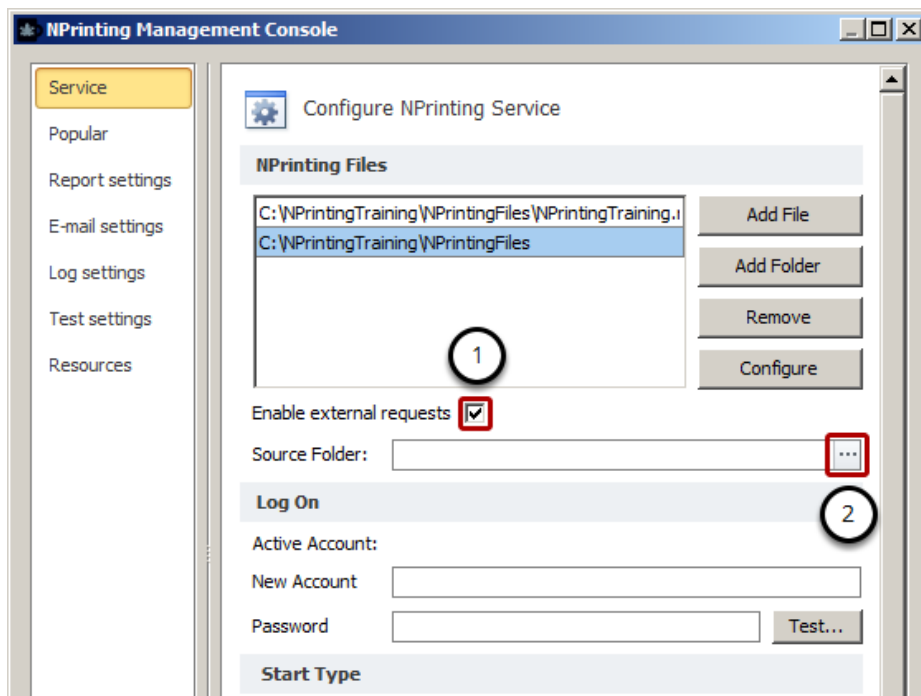
Adding at least one NPrinting project (.nsq file) is not mandatory. The Service will also start without it. This is useful if you plan to use NPrinting On-Demand. When the NPrinting Service receives an On-Demand request, automatically it retrieves the .nsq. For instance, when the .nsq is saved with a Client with a different version than the Server

Select NPrinting Project Folder



1. Expand the file system node until you find the folder you wish to add
2. Confirm by pressing OK

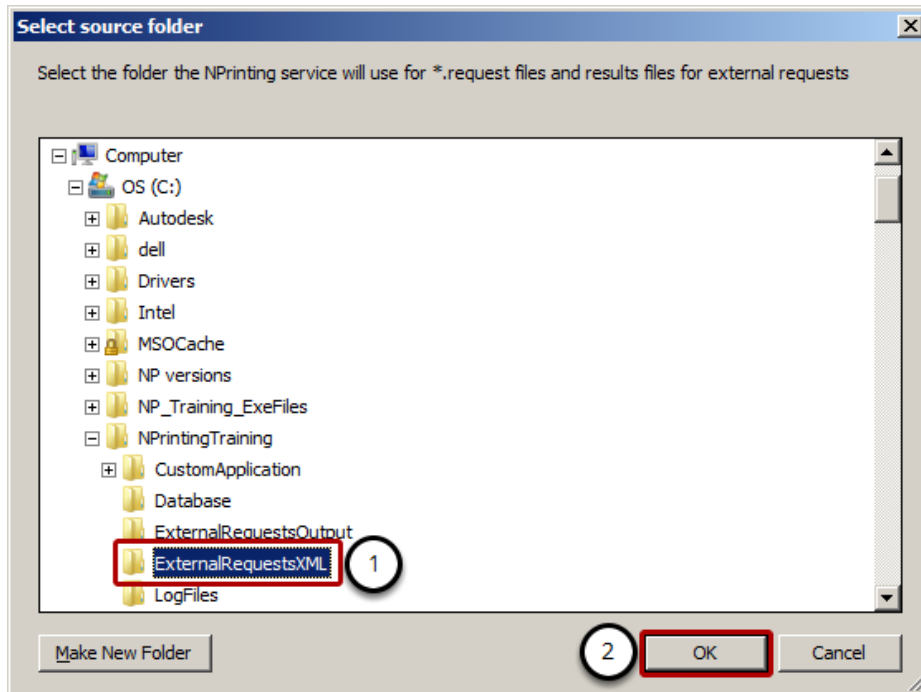
Enable External Requests



1. If you want to use the service for **External Request** reporting, put a check mark in the **Enable external requests** box
2. Click the browse button to configure the directory where XML files to be executed by NPrinting Service are to be saved.

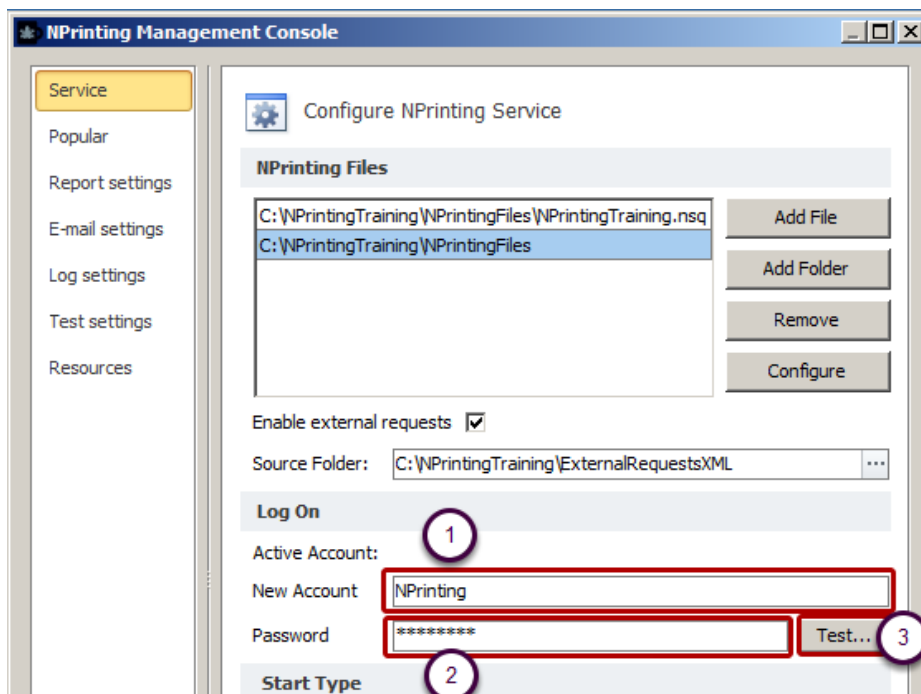
If you start the service but the .nsq is no longer available, you'll get an error message in the log and the service will continue to work. This means that you can also use External Requests and On-Demand without a .nsq file configured in the Management Console.

Select Source Folder



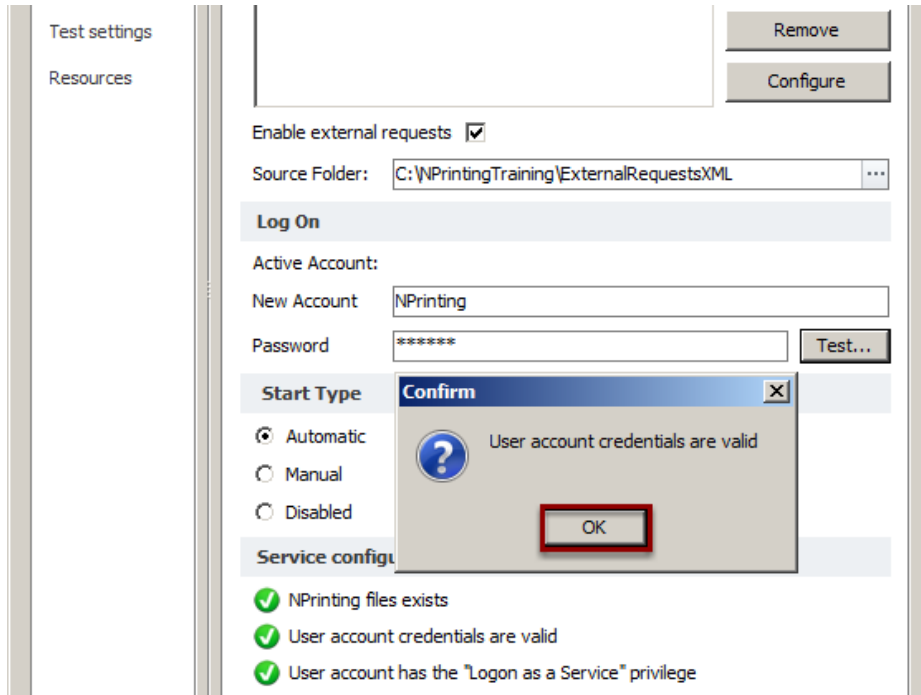
1. Browse to C:\NPrintingTraining\ and select the ExternalRequestsXML folder. Use Make New Folder if necessary
2. Click on the OK button

Enter Log-on Account Info



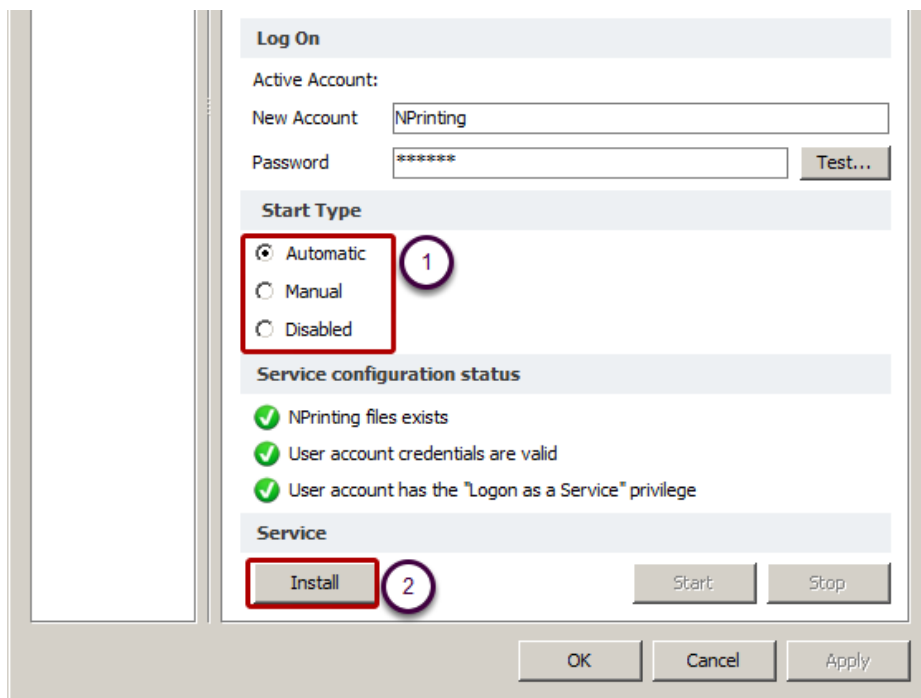
1. Enter the Windows User ID of a **computer administrator** in the **New Account** field. It is best to create a user reserved for NPrinting Service. The user must have "Login as a service" privileges
2. Enter the corresponding **Password**
3. Click on the Test button to validate the User Account and Password

Credential Validity Confirmed



Click on the OK button.

Conclude Configuration and Install



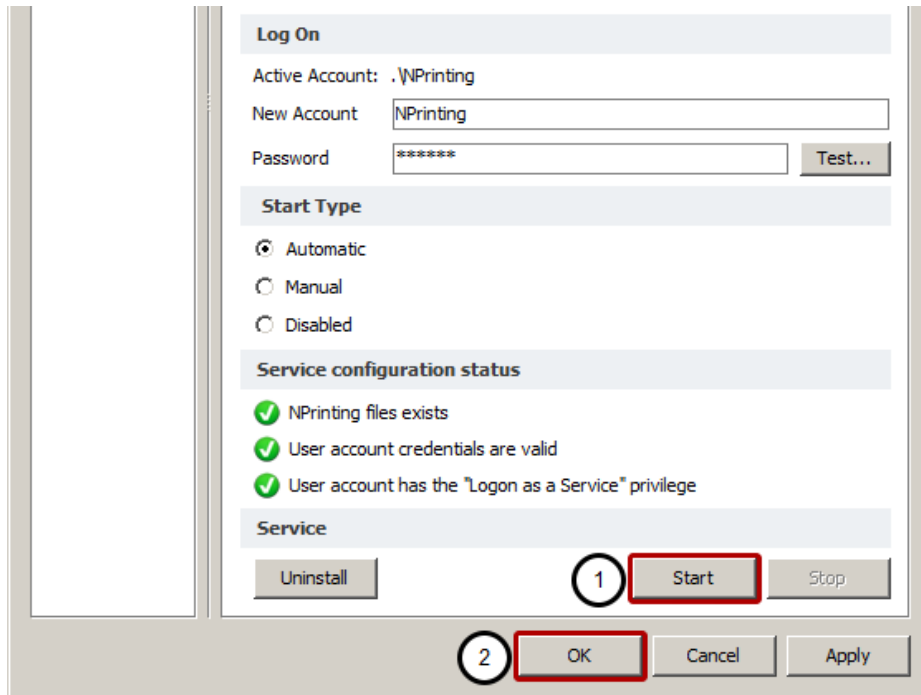
1. Select how you want NPrinting Service to start:

- **Automatic:** starts every time the computer is re-started
- **Manual:** you will need to open the NPrinting Management Console to start the service. Use the NPrinting Management Console so you can check that all parameters are correctly configured.
- **Disabled:** you will need to enable it again in order to run the service

2. All Service configuration status indicators must be green before clicking on the **Install** button to install the service

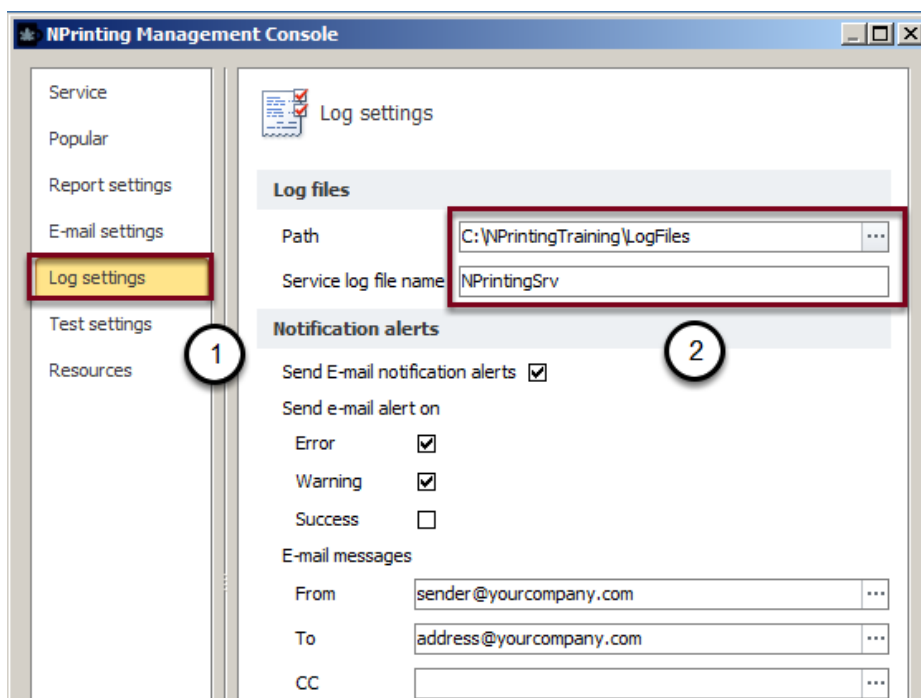
Note: You will have to click on the **Stop** button to change these settings and manually restart the service when you have finished by clicking on the **Start** button.

Start Up Service so It Will Execute Your Schedules



1. Click on **Start** to start the service. It will now automatically run scheduled jobs
2. Click on **OK** to save your NPrinting Service settings

Log Settings



1. Select **Log settings** from the panel
2. Type or select the **log files path** and its **name**.

- **Path** is the folder where Service logs will be saved. Select an easy-to-find folder.
- **Service log file name**, type here the name of the Service log file. The default file name follow the scheme YearMonthDay_NPrintingSvc.log (e.g. 20140821_NPrintingSvc.log). NPrinting Server will create a new log file each day. You have to delete them manually, there isn't a feature to delete automatically old log files. We suggest you insert something that lets you to easily distinguish the service log file from the one of the client. Please send us a copy of the logs if you need help.

When starting, the service adds two different log messages to the log file; one for starting the On-Demand thread and the other for the External Request thread.