

Install NPrinting Release 14.x and Later

You can download this tutorial by clicking here: "[Install NPrinting Release 14.x and Later](#)".

Download the latest version of NPrinting directly to the computer (that you wish to install NPrinting onto) from the following location (Do not install over the network):

www.vizubi.com/nprinting/downloads

There is only one setup file for each NPrinting product regardless the installed version of QlikView. NPrinting supports QlikView9 SR5 or later, QlikView10 SR2 or later, and QlikView11 SR3 or later.

There are three setup files:

- NPrinting_Client_14.x.y.z.exe the Client for developing NPrinting projects
- NPrinting_Server_14.x.y.z.exe the Server for executing the NPrinting projects

and

- NPrinting_OnDemand_Components_x86_14.x.y.z.exe for Windows 32 bit

or

- NPrinting_OnDemand_Components_x64_14.x.y.x.exe for Windows 64 bit

You can install NPrinting Server on a different machine than NPrinting Client, or on the same.

NPrinting On-Demand Components contain:

- **Custom Objects for Internet Explorer Plugin:** must be installed on each NPrinting development/QV desktop computer and on the server that will publish the QVW's via AccessPoint
- **Extension Objects (Use when Internet Explorer plugin not installed):** must be installed on each NPrinting development/QV desktop computer and on the server that will publish the QVW's via AccessPoint

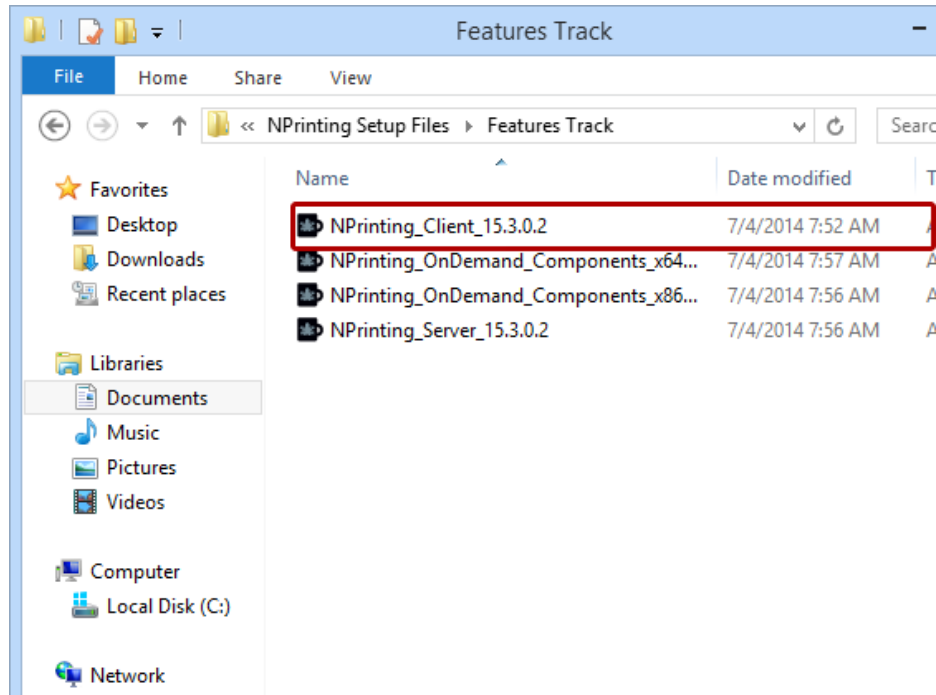
Please keep the three installation packages updated to the to the most recently released version available. NP Client, NP Server and NP Server Components must always be the same version/release number.

You also must download [NPrinting Training Material](#) and extract its zipped contents into C:\NPrintingTraining\ so that the the relative path structure continues to be valid.

Part 1 - Install NPrinting Server or Client

NB: Installation of NPrinting Client follows the same steps as the NPrinting Server. Activation for NPrinting Client is done from within the Client. While for Server, activation is done within the NPrinting Management Console. In either case, the respective application will open at the end of the installation process if you put a check in the **Launch NPrinting Client/Server** box before clicking on the **Finish** button. See the first four steps of: [How to Update Your License](#) and all of [Activate or Reactivate NPrinting](#).

Begin Installation

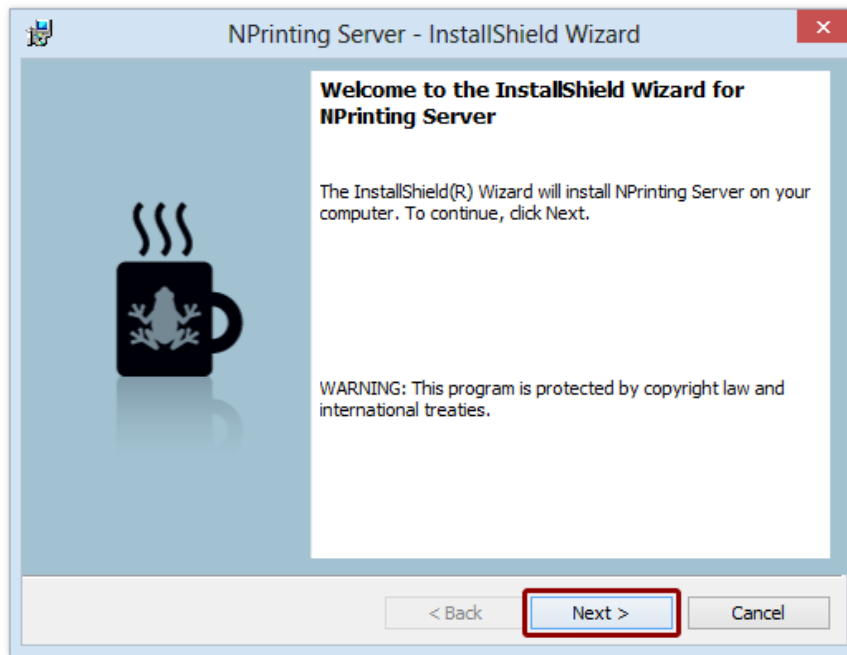


- You may install NPrinting Client alone on a computer for developing NPrinting Projects and manual report distribution.
- You may install NPrinting Client and On-Demand Components on a computer for developing NPrinting Projects, whether On-Demand or not.
- You may install NPrinting Server alone on a computer for running NPrinting Service to automate execution of scheduled jobs.
- You may install NPrinting Server and On-Demand Components on a computer for running NPrinting Service to automate execution of scheduled jobs and provide On-Demand reporting.
- You may install NPrinting Client, Server and On-Demand Components on a computer for developing NPrinting Projects, whether On-Demand or not, running NPrinting Service to automate execution of scheduled jobs and provide On-Demand reporting, all on the same computer.

All three products have been downloaded to the **Downloads** folder to be installed on a single computer for doing all of the above.

Double click on and install the NPrinting setup files in any order. I will start with **NPrinting Server**.

InstallShield Copyright Warning



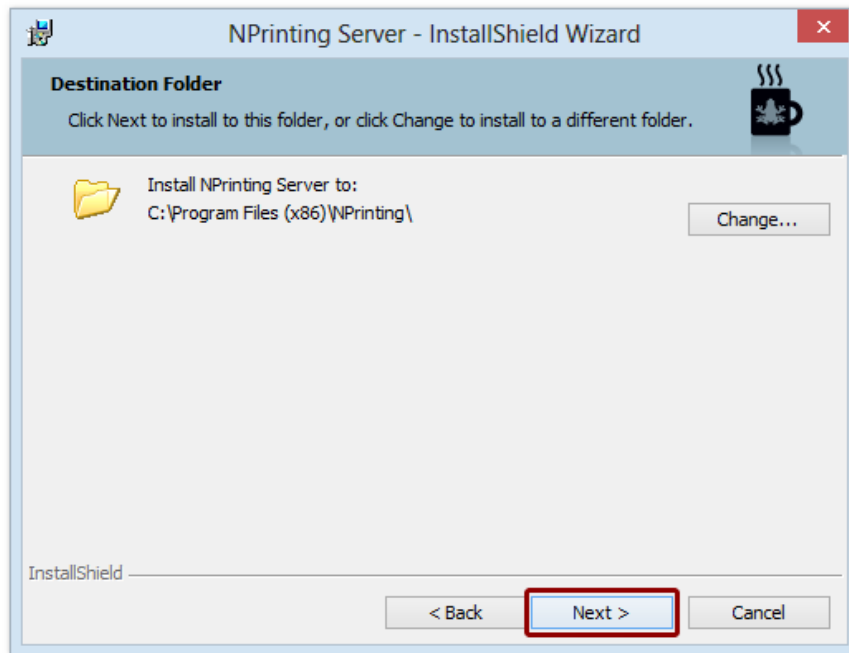
Click on the Next button.

Accept or Reject EULA



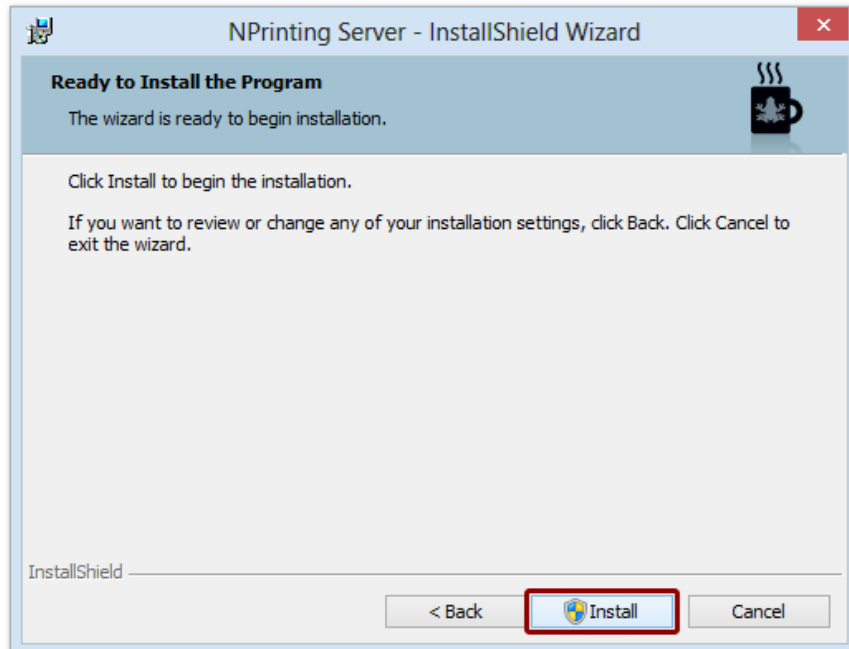
1. Select the I accept the terms... radio button
2. Click on the Next button

Opportunity to Change Installation Folder



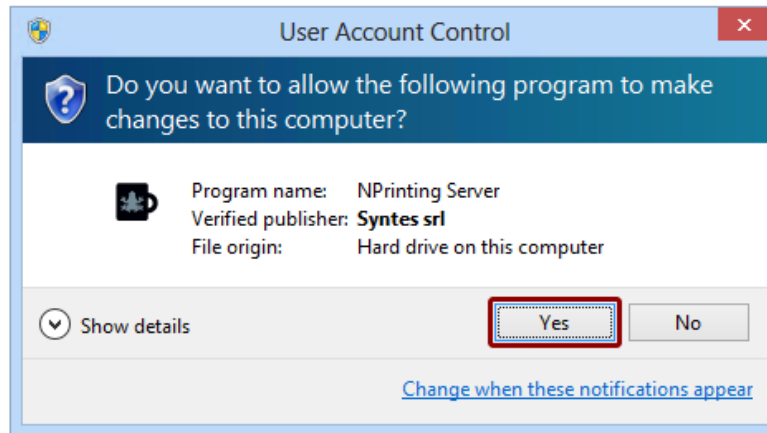
Unless you have a specific need to change the installation folder, just click on the **Next** button.

Last Chance



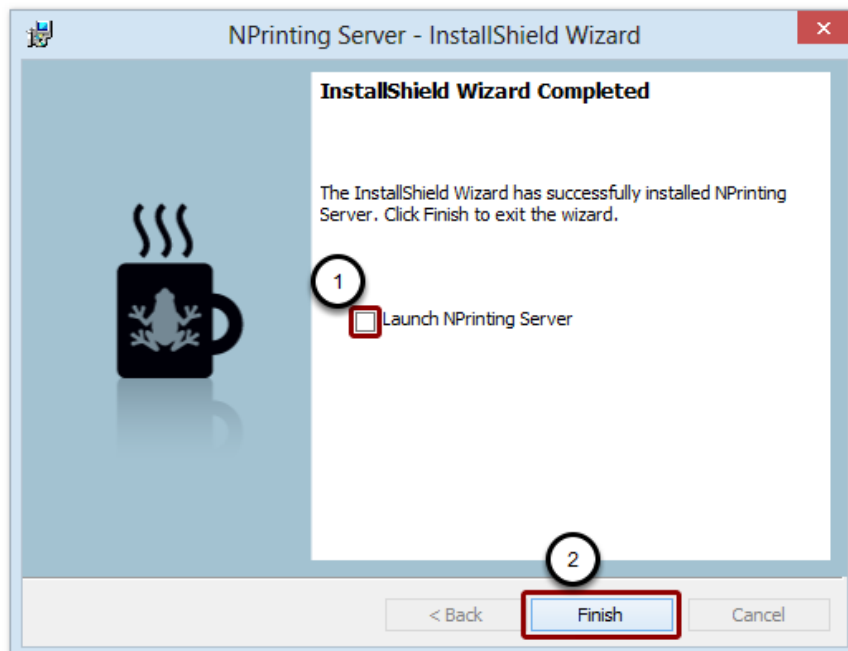
This is your last chance to go back and revise your selections. If you are content with your selections, click on the **Install** button.

Allow Installation



Click on the Yes button.

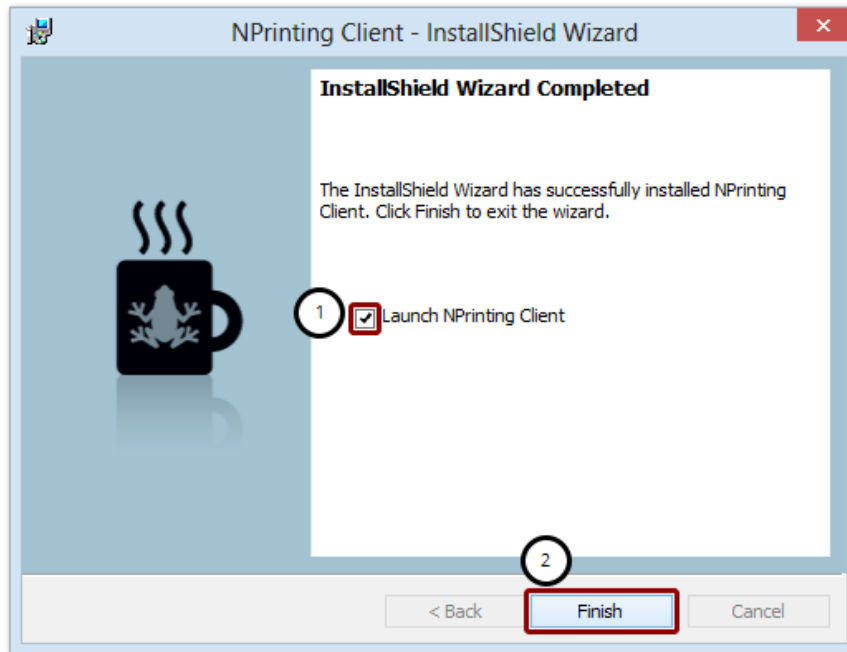
Finish and Launch NPrinting Management Console



NPrinting Management Console is an external application that is installed with NPrinting Server for configuring NPrinting Service.

1. If you put a check mark in the **Launch NPrinting Server** box, NPrinting Management Console will start up and allow you to configure and start NPrinting Service. If not, you will have to start NPrinting Management Console up manually at some later time to configure and start NPrinting Service.
2. Click on the **Finish** button

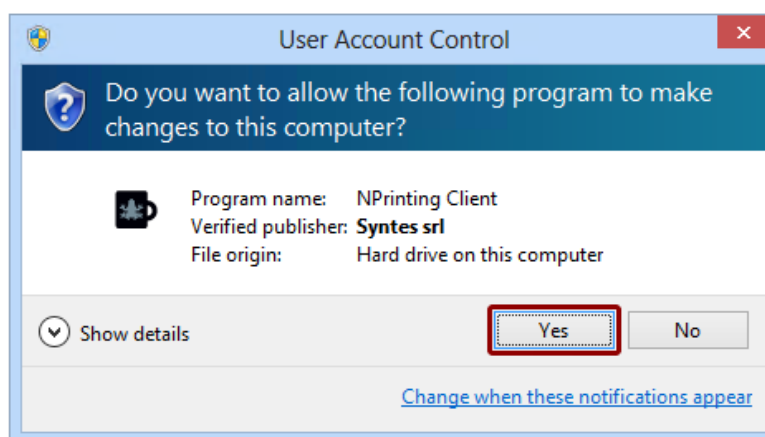
Finish Procedure for NPrinting Client Installation



1. Put a check in the **Launch NPrinting Client** box if you want to get started developing and distributing NPrinting reports immediately
2. Click on the **Finish** button

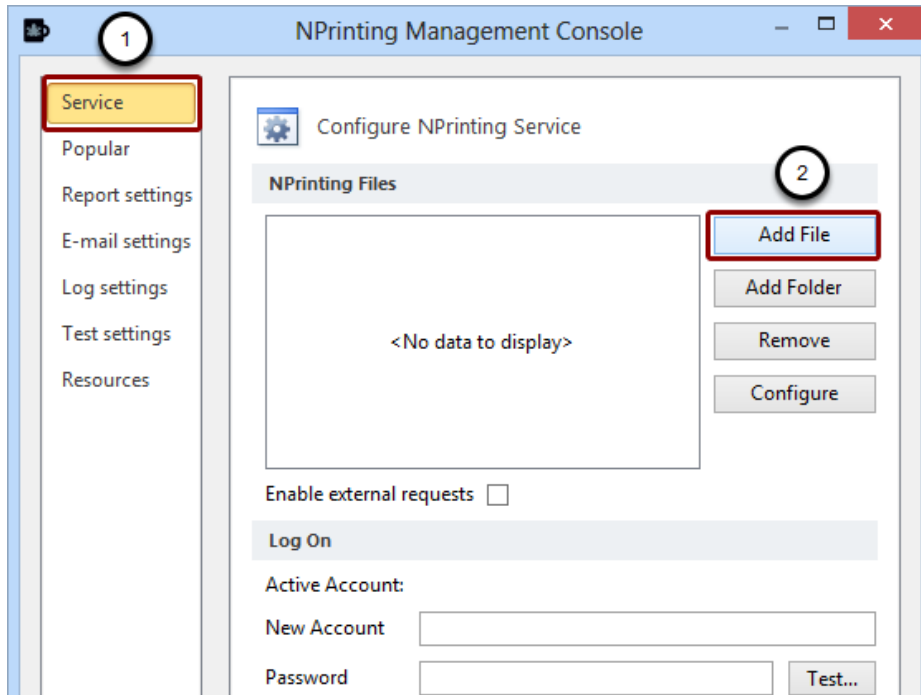
Part 2 - Configure NPrinting Service with NPrinting Management Console

Allow Changes to System



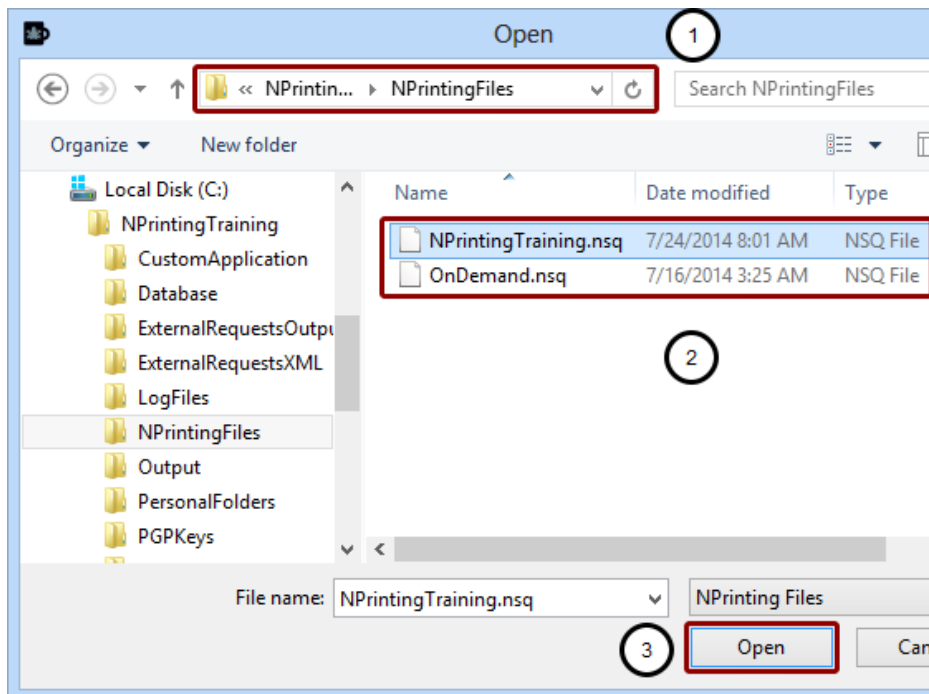
Click on the **Yes** button.

Add Initial NPrinting Project File



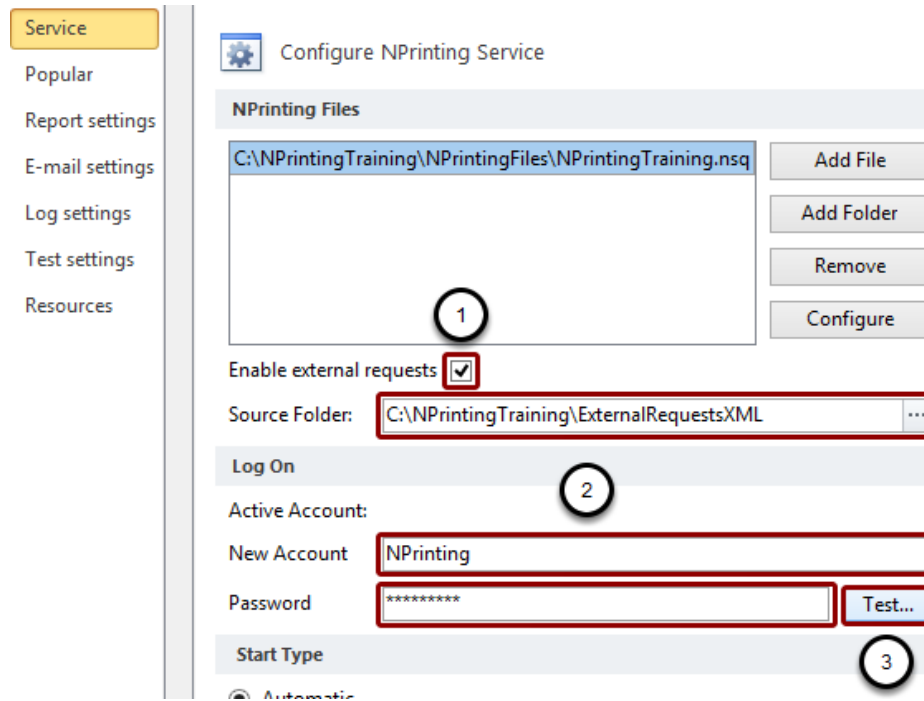
1. Select the Service window of NPrinting Management Console if it is not already selected
2. Click on the Add File or on the Add Folder button

Select NPrinting Project File



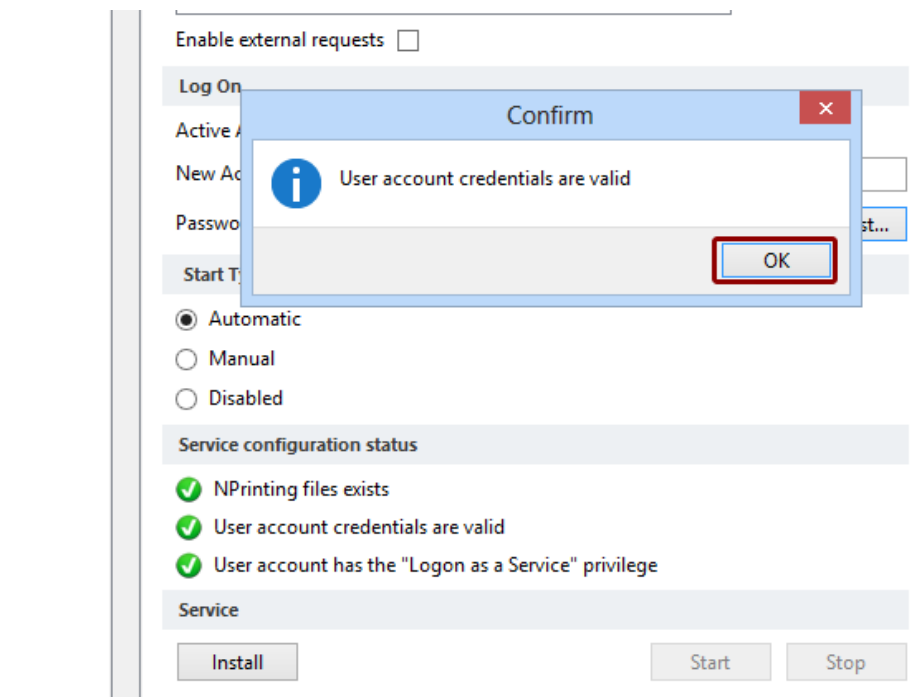
1. Browse to C:\NPrintingTraining\NPrintingFiles\
2. Select the OnDemand NPrinting Project file. If you select NPrintingTraining.nsq, all the scheduled jobs in the working examples that it contains will begin executing according to their schedules
3. Click on the Open button

Configure NPrinting Service



1. Put a check mark in the Enable external requests box if you want to run jobs from XML request files, see: [How to Execute NPrinting Reports on Demand](#) and [How to Configure NPrinting as a Service](#)
2. Enter the User ID of a machine administrator in the **New Account** field the corresponding password in the **Password** field, see: [How to Configure NPrinting as a Service](#) again
3. Click on the Test... button and if configured correctly, you will see the confirmation message below

Confirm Correct NPrinting Service Log On Configuration



Click on the OK button.

Conclude Configuration and Install NPrinting Service

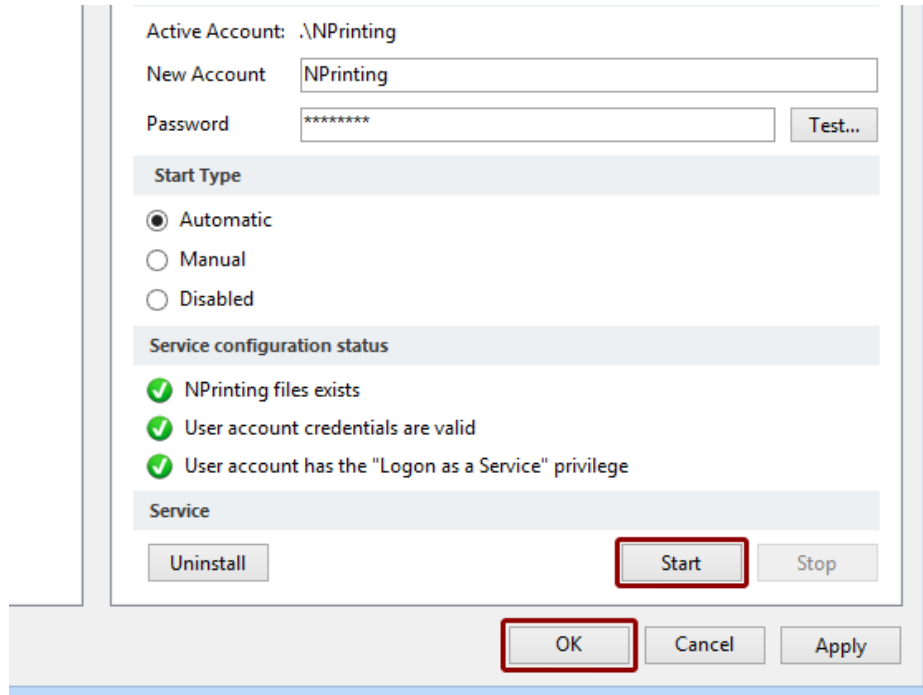
The screenshot shows a configuration dialog box for the NPrinting service. It includes the following sections and elements:

- Active Account:** A section with a "New Account" field containing "NPrinting" and a "Password" field containing "*****". A "Test..." button is located to the right of the password field.
- Start Type:** A section with three radio button options: "Automatic" (selected), "Manual", and "Disabled".
- Service configuration status:** A section containing three status messages, each with a green checkmark: "NPrinting files exists", "User account credentials are valid", and "User account has the 'Logon as a Service' privilege".
- Service:** A section with an "Install" button, and "Start" and "Stop" buttons to its right.
- Bottom Buttons:** "OK", "Cancel", and "Apply" buttons are located at the bottom of the dialog.

Red boxes in the image highlight the "Automatic" radio button, the "Service configuration status" section, and the "Install" button.

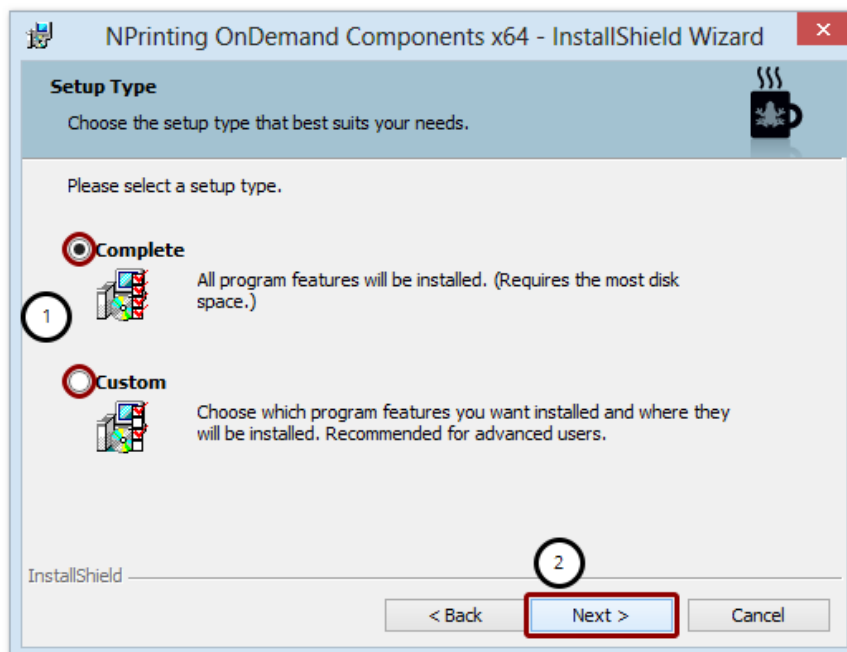
See: [How to Configure NPrinting as a Service](#)

Start NPrinting Service



Part 3 - Install NPrinting On-Demand Components

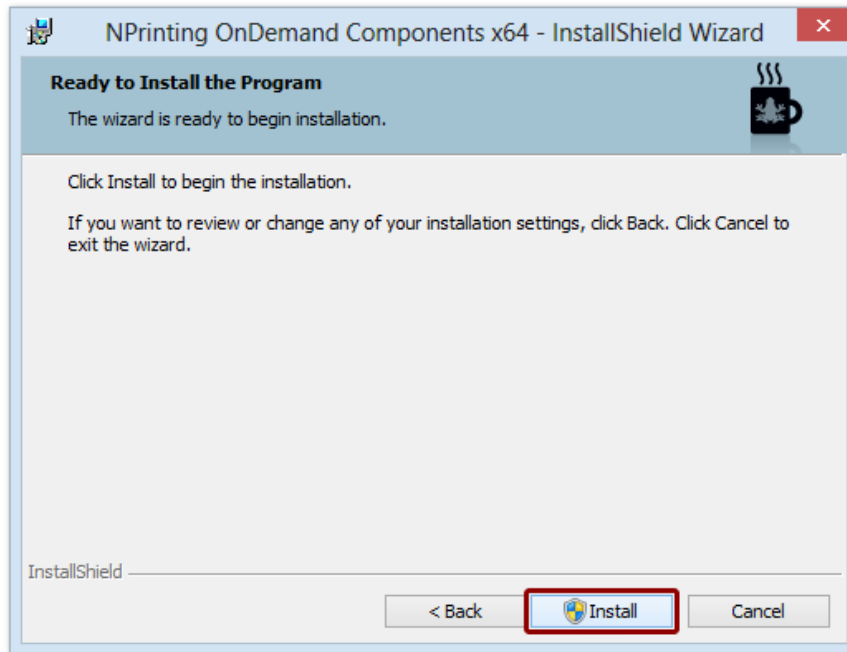
NPrinting On-Demand Components Setup Type Dialog



The installation of NPrinting On-Demand Components does present one dialog window that is unique to it.

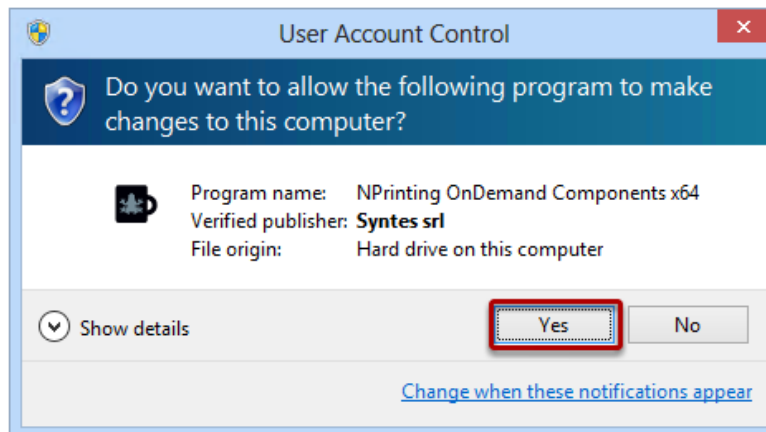
1. Choose the **Complete** "install everything in the default locations" setup or the **Custom** "specific needs and locations" setup
2. Click on the **Next** button

Install NPrinting On-Demand Components



If you have any doubts, now is your last chance to go back and revise your settings.

Permit Changes to Computer



Answer Yes to the question "Do you want to allow the following program to make changes to this computer?"
When the installation procedure for all three products is complete you'll be ready to use On-Demand reporting.