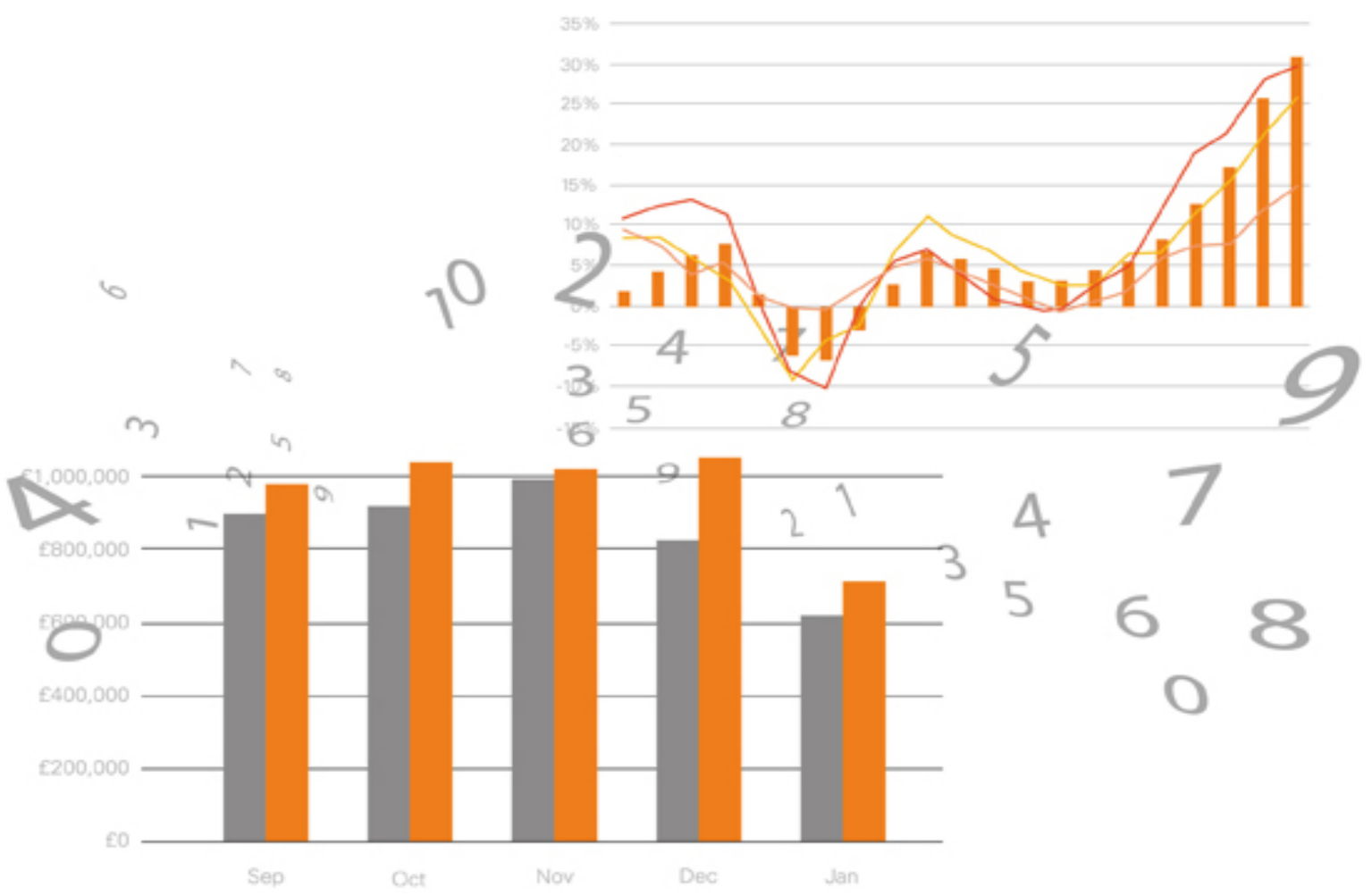




# Hello

# QlikView!

*A Beginner's Guide to QlikView®*



Available on [QVApps.com](http://QVApps.com)

by Anamica Ramkhelawan, Jason Atkinson and Luca Fracassi

## Disclaimer page

**This book and its authors have no affiliation with QlikTech.**

All rights reserved. No part of this book may be reproduced, stored in a retrieval system, or transmitted in any form or by any means, without the prior written permission of the authors, except in the case of brief quotations embedded in critical articles or reviews.

Every effort has been made in the preparation of this book to ensure the accuracy of the information presented. However, the information contained in this book is sold without warranty, either express or implied.

The authors, dealers and distributors will not be held liable for any damages caused or alleged to be caused directly or indirectly by this book.

The authors have endeavored to provide trademark information about all of the companies and products mentioned in this book by the appropriate use of capitals. However, the authors cannot guarantee the accuracy of this information.

First published: September 2011

Title: Hello QlikView!

Version 1.0

**Cover design by Chiara Fracassi**

Available on [QVApps.com](http://QVApps.com)

<b><u>TABLE OF CONTENTS</u></b>	<b><u>DISCLAIMER PAGE</u></b>	<b><u>1</u></b>
<b><u>ABOUT THE AUTHORS</u></b>		<b><u>2</u></b>
ANAMICA RAMKHELAWAN		2
JASON ATKINSON		2
LUCA FRACASSI		3
<b><u>THANKS</u></b>		<b><u>4</u></b>
<b><u>PREFACE</u></b>		<b><u>9</u></b>
<b><u>GETTING STARTED WITH QLIKVIEW</u></b>		<b><u>11</u></b>
QVW FILE		11
QVD FILE		12
LOAD SCRIPT		12
FRONT-END		13
<b><u>CHAPTER I – HELLO QLIKVIEW!</u></b>		<b><u>15</u></b>
OPENING QLIKVIEW FOR THE FIRST TIME		15
INSTALL DATA SOURCES		16
BUILDING YOUR FIRST QLIKVIEW APPLICATION		17
BEHIND THE CURTAINS		24
THE INITIAL VARIABLES		25
THE LOAD STATEMENT		26
THE TABLE VIEWER		28
FRONT-END		29
ENABLING THE DESIGN TOOLBAR		29
BASIC NOTIONS ABOUT THE FRONT-END		30
MODIFYING YOUR FIRST GRAPH		34
DIMENSIONS		36

EXPRESSIONS .....	37
ADDING MORE EXPRESSIONS.....	41
GROUPS.....	46
SEARCH OBJECT .....	51
CONCLUSION .....	54

**CHAPTER II – LOADING DATA FROM DIFFERENT DATA SOURCES.....56**

<b>FIRST STEP – CREATE NEW QV APPLICATION .....</b>	<b>57</b>
LOCATION OF SOURCE FILES.....	57
LOADING ACCESS DB.....	58
<b>LOADING DATA.....</b>	<b>68</b>
RELOAD VS DEBUG (IE. LIMITED LOAD FOR TESTING SCRIPT AND TABLE JOINS).....	69
LOADING EXCEL FILE.....	73
LOADING TEXT FILE .....	84
LOADING IN-LINE TABLE .....	93
CONCLUSION .....	101
<b>LOAD SCRIPT LANGUAGE &amp; COMMANDS .....</b>	<b>102</b>
SCRIPT EXECUTION.....	102
HOW TO SHOW COMMENTS (COMMENT AND UNCOMMENT FEATURE) .....	103
LINKING TABLES.....	106
QUALIFY/UNQUALIFY STATEMENT .....	110
<b>CALCULATIONS IN THE SCRIPT.....</b>	<b>119</b>
<b>NORMALIZING OF DATES .....</b>	<b>123</b>
<b>MAPPING LOAD.....</b>	<b>125</b>
<b>GENERATING DATA IN THE QV SCRIPT .....</b>	<b>129</b>
INCLUDE STATEMENT.....	129
RESIDENT TABLES .....	133
<b>CROSSTABLES.....</b>	<b>136</b>
CONCLUSION .....	147
<b><u>CHAPTER III: ADVANCED SCRIPTING.....</u></b>	<b><u>149</u></b>

CONDITION ON A FIELD IN A TABLE (IF).....	149
---	-----

<b>AGGREGATING DATA (GROUP BY) AND FILTER DATA (WHERE)</b> .....	<b>150</b>
<b>CONCATENATION</b> .....	<b>152</b>
<b>METADATA TAGS AND COMMENTS</b> .....	<b>155</b>
<b>CONCLUSION</b> .....	<b>160</b>
<b><u>CHAPTER IV: FRONT-END DESIGNER BASICS IN QLIKVIEW</u></b> .....	<b><u>162</u></b>
<b>TYPE OF OBJECTS: INTRODUCTION</b> .....	<b>164</b>
HOW TO GET STARTED .....	164
GENERAL PROPERTIES .....	165
<b>OBJECTS: LIST BOX</b> .....	<b>166</b>
<b>OBJECTS: MULTI BOX</b> .....	<b>168</b>
<b>OBJECTS: TABLE BOX</b> .....	<b>173</b>
<b>OBJECTS: CHARTS</b> .....	<b>177</b>
CHART PROPERTIES: GENERAL TAB .....	177
CHART PROPERTIES: DIMENSIONS .....	183
CHART PROPERTIES: EXPRESSIONS .....	191
CHART PROPERTIES: SORT .....	200
CHART PROPERTIES: STYLE .....	201
CHART PROPERTIES: PRESENTATION .....	202
CHART PROPERTIES: AXES .....	208
CHART PROPERTIES: COLORS .....	211
CHART PROPERTIES: NUMBER .....	215
CHART PROPERTIES: FONT .....	216
CHART PROPERTIES: LAY-OUT .....	218
CHART PROPERTIES: CAPTION .....	220
<b>CLONING OBJECTS</b> .....	<b>182</b>
<b>CHARTS: TABLES (PIVOT &amp; STRAIGHT)</b> .....	<b>222</b>
<b>OBJECTS: CURRENT SELECTIONS BOX</b> .....	<b>229</b>
<b>OBJECTS: TEXT OBJECT</b> .....	<b>232</b>
<b>OBJECTS: BOOKMARK OBJECT</b> .....	<b>236</b>
<b>OBJECTS: SEARCH OBJECT</b> .....	<b>239</b>
<b>OBJECTS: CONTAINER</b> .....	<b>244</b>
<b>OBJECTS: BUTTON</b> .....	<b>247</b>

<b>VARIABLES</b> .....	<b>255</b>
<b>LINKED OBJECTS</b> .....	<b>258</b>
<b>CONVEYING MESSAGE TO YOUR AUDIENCE</b> .....	<b>260</b>
<b>CONCLUSION</b> .....	<b>265</b>
<b><u>CHAPTER V: EXPERT USER – SET-ANALYSIS</u></b> .....	<b><u>267</u></b>
<b>WHAT IS A SET-ANALYSIS?</b> .....	<b>267</b>
<b>HOW TO CREATE A SET-ANALYSIS?</b> .....	<b>268</b>
<b>CURRENT SELECTION IN A SET-ANALYSIS</b> .....	<b>272</b>
<b>HOW TO USE EXCLUDE AND SEARCH IN A SET ANALYSIS?</b> .....	<b>275</b>
<b>WILDCARDS</b> .....	<b>277</b>
<b>BOOKMARKS AS PART OF YOUR SET ANALYSIS</b> .....	<b>280</b>
<b>EXPERT USER: TIPS &amp; TRICKS</b> .....	<b>285</b>
<b>WORD OF CAUTION USING A SET ANALYSIS</b> .....	<b>287</b>
<b><u>SUGGESTED LINKS</u></b> .....	<b><u>288</u></b>

# Chapter I: Hello QlikView!

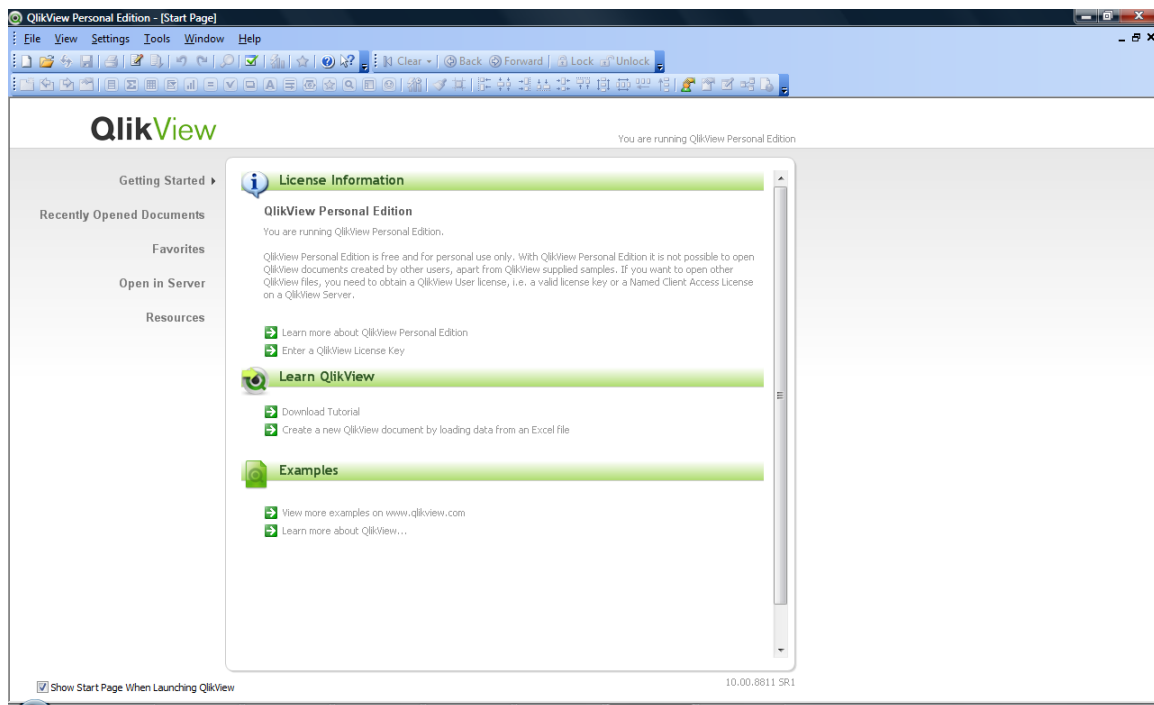
## Chapter I – Hello QlikView!

The objective of this chapter is to show you how to quickly build your first QV App. The idea is to show you through a simple example the basic operations needed to become acquainted and quickly operational with QlikView.

In essence we would like this to be the equivalent of a “Hello World” program for QlikView.

### *Opening QlikView for the first time*

The first time you launch QlikView you will landing on the following page:



It's a simple startup page. The most interesting part is at the bottom. Scrolling down you will find quite a few examples of QlikView applications. These apps are an excellent start for you to begin to explore what you can do with QlikView.



Once you will become more proficient with QlikView development, they will also become a very good source from where to “borrow” some code. We won't be analyzing those examples here, but we strongly suggest you to have a look at them.

On the left side of the startup page you will find some navigation links. Feel free to explore them, but they are won't be needed in these first steps. They will become more useful once you will have spent more time on QlikView and built some apps. The only one that will probably be useful immediately is the last one, *Resources*, which contains some quick links toward the QlikView Community and the QlikView site.

### *Install data sources*

In case you haven't done it yet, install the package we have prepared containing some ready-made data sources that we will be using throughout the book.

Just follow the instructions contained in the *README.txt* file. At the end of the installation you will have created a folder named *Hello QlikView* on your *C* or *D* drive. This is a mandatory step if you want to follow the examples in the book.

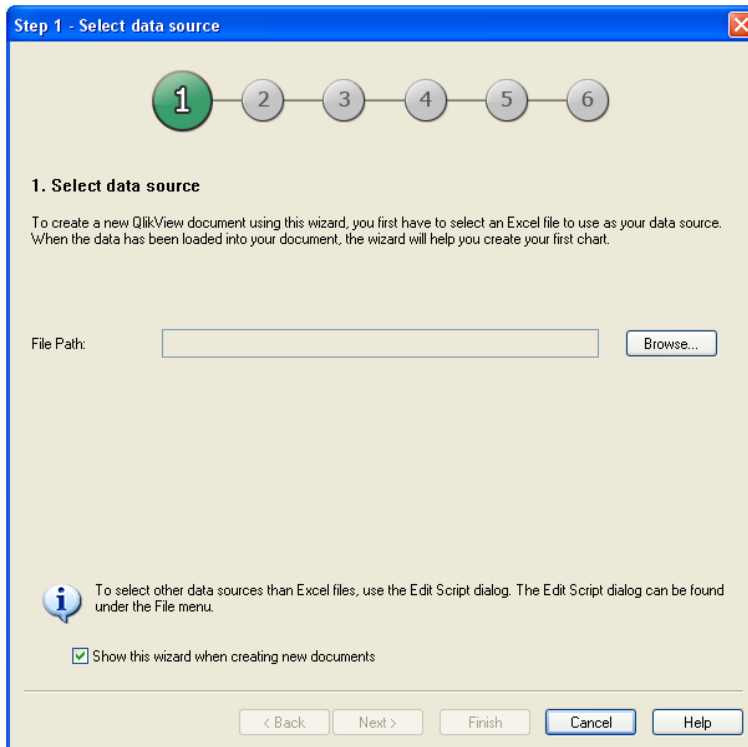
## Building your first QlikView Application

So how do we go on about this? Let's create a new document by simply clicking on the "New document" icon or alternatively via the menu *File->New*



### Step 1

You will be greeted by the following wizard:



This wizard will help us loading some data from an Excel file that we have prepared for this exercise.

Let's click on the *Browse* button and let's navigate on the *D* drive where you should have installed our *Hello QlikView* directory (or another location if you

## Chapter II: Loading data from different data sources

## Chapter II – Loading data from different data sources

In the previous chapter we created our first Qlikview application Hello Qlikview which was based on one data table. In this chapter we will develop a more real life application using the following types of data sources:

- MS Access Database
- Excel
- Text file
- In-Line table

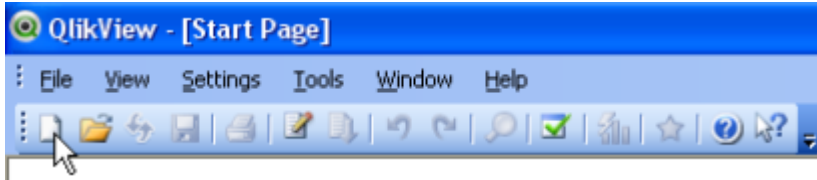
The data sources are based on the Northwind MS Access database which is the example database supplied with MS Access.

All the source files used in the next chapter can be found in the data package you received when you purchased the book. The files should be located in the *Hello QlikView* directory (or another location if you chose to install the package on a different one).

Just follow the instructions contained in the *Readme.txt* file. At the end of the installation you will have created a folder named Hello QlikView on your C or D drive.

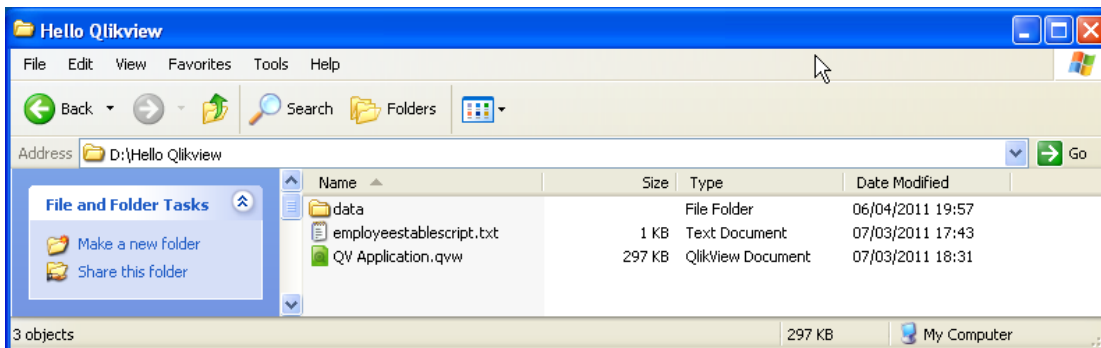
## First Step - Create new QV Application

Create a new document by simply clicking on the New document icon or alternatively via the menu *File->New*



### Location of source files

In our example we will use the same directory structure as described for the *Hello Qlikview.qvw* example in the previous chapter.



We recommend that you save the file immediately. Save it into the same directory as the Hello QlikView developed in the previous chapter and name the new file *QV Application.qvw*. The directory data contains all the source files required for this chapter.

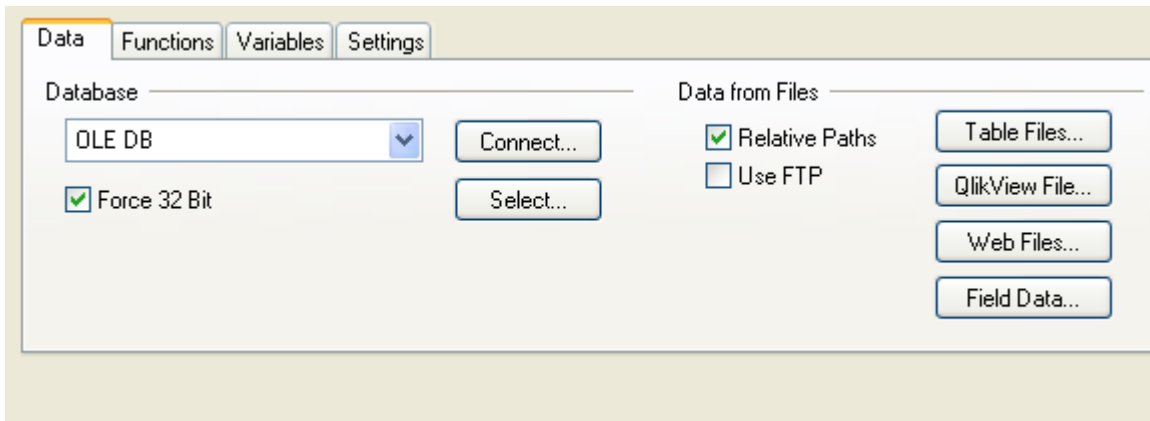
## Loading Access DB

Click on the *Edit Script* button or via the menu *File->Edit Script*

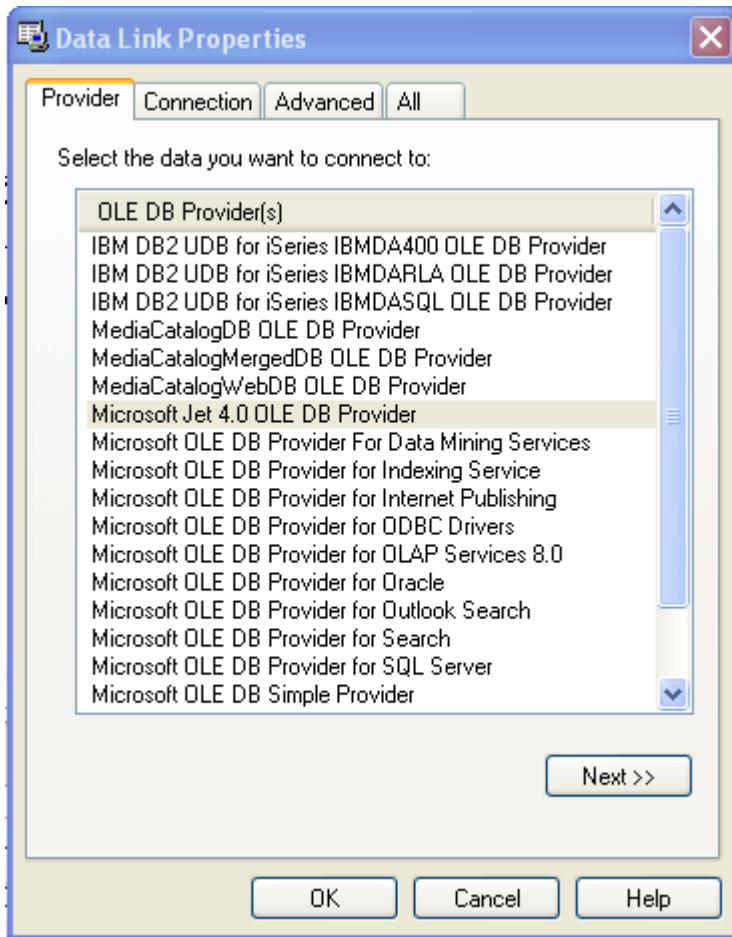


At the bottom of the Edit Script dialog, you see the following section:

In the Database drop down box, select *OLE DB*. Also tick on *Relative Paths*. This indicates that the data sources are located in the directory relative to the location of the Qlikview application. Click on the *Connect* button.



Select Microsoft Jet 4.0 OLE DB Provider then *Next*



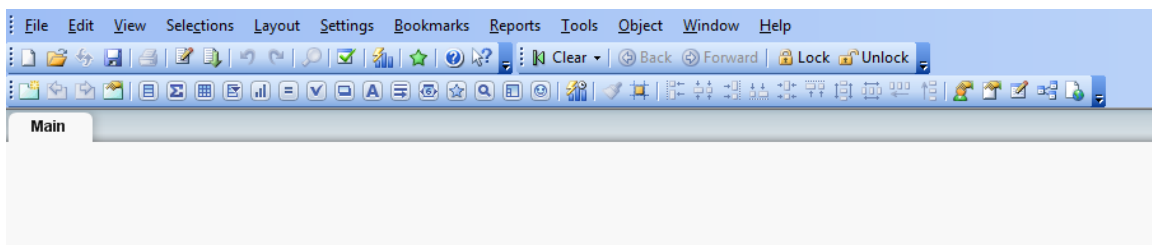
# Chapter IV: Front-end Designer Basics in QlikView



## Chapter IV: Front-end Designer Basics in QlikView

In the previous chapters you were introduced to the concepts of scripting and data loading in QlikView. This chapter will focus on how we can actually visualize this data into dashboards for analysis.

QlikView provides the front-end user with a number of options to design the appropriate view for the target audience. Opening a new file will automatically show a blank *Sheet* called *Main*.

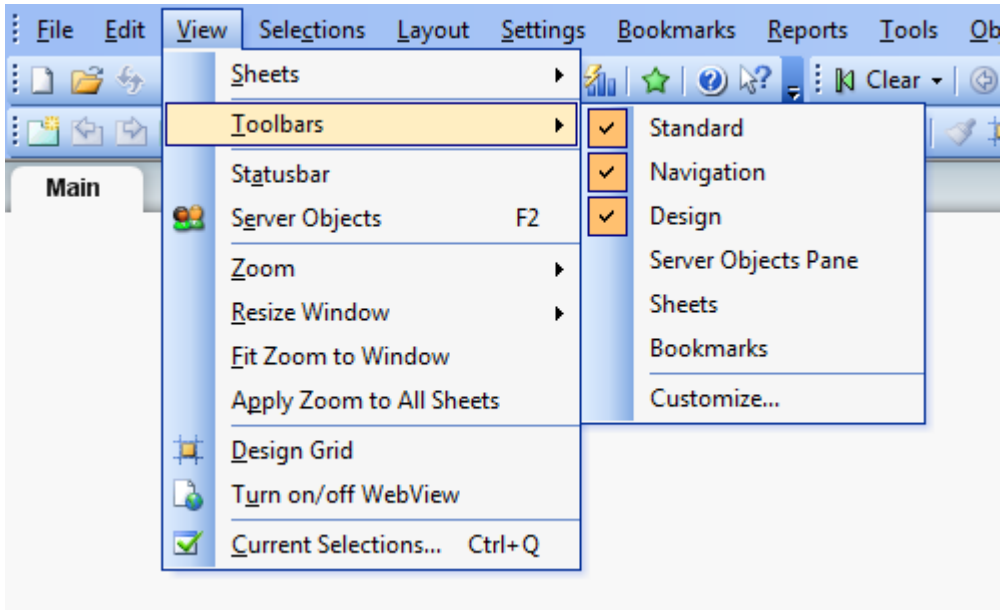


Sheets are the basis of the front-end design, the canvas on which the QlikView front-end designer can start the design of a dashboard. You can add a sheet or move the order of your sheets with the short-cuts on the design toolbar:



On a sheet a number of 'objects' can be placed, which is for example a graph, chart, table, etc. The objects are inter-connected, which means that once you make a selection in one object, this same selection will be reflected in another object.

Before we start designing the front-end, let's add the design toolbar so we can use some of the shortcuts when designing the front-end.



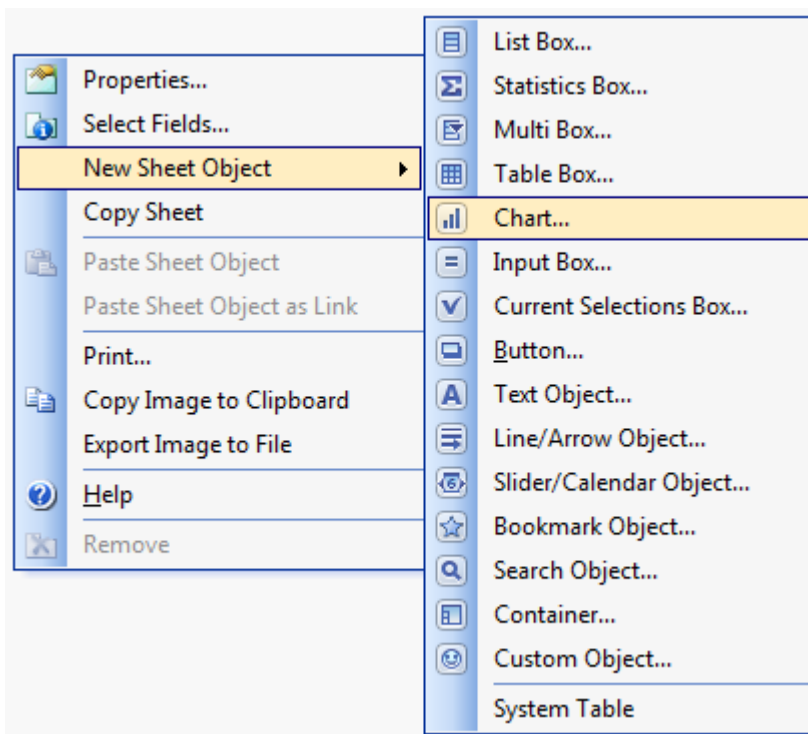
## *Type of objects: Introduction*

In QlikView you have many different types of objects, which we will explain in the following sections. Before we go into these details, we would like to explain the properties that are similar and irrelevant to the selected object.

### How to get started...

You start to create your report or dashboard for the end-user by adding objects to the sheets in QlikView. These are the typical reports you would like your audience to view.

By right-clicking, you can select a *New Sheet Object*, with which you can start to create the building blocks of your report.



## General Properties

All objects have a general set of properties, which are relatively similar per type of object. These are explained below. We will go into more detail per object in the next paragraphs.

<b><i>Title</i></b>	In the 'Title' window a name can be given that will be displayed in the header of the object. The title can also be used to represent a calculation (by clicking the '...' button), creating a dynamic title.
<b><i>Promote</i></b>	Advances a field in the object presentation order
<b><i>Demote</i></b>	Retreats a field in the object presentation order
<b><i>Object ID</i></b>	Every sheet object in QlikView automatically gets a unique ID

For the examples below we will use the file you created in the Hello QlikView chapter. By using this example we will guide you through the properties of the different objects.