



QlikView 11 Feature Sheet Source Control Integration

What is included?

QlikView 11 can integrate directly with industry standard source code control systems. QlikView 11 provides a set of operations to enable a developer to move documents in and out of target source control systems. Using the integration, the source control system can provide tracking of changes, roll back of changes, and merge changes from multiple developers. Each part of the document—such as script, properties, and user interface object definitions—is stored separately and can have changes tracked separately.

What Does This Feature Bring to QlikView?

When managing large QlikView deployments involving, developers and administrators can improve application development efficiency by accessing and utilizing a central source code control system directly from QlikView Desktop.

These capabilities give enterprise development teams standard means of controlling and tracking the development of QlikViews amongst teams. Effective use of source control provides discipline, audit and governance to all aspects of QlikView development

How does it work?

A user with access to Microsoft TFS (via any supported client), has new menu options to perform standard source control functions while developing a QlikView. At any point during the development of a QlikView document, the developer can check a document into source control, retrieve the latest version of a document from source control, or check out a document.

How do I configure it?

You will need access to the following to enable Source Control integration with QlikView 11 and Microsoft TFS.

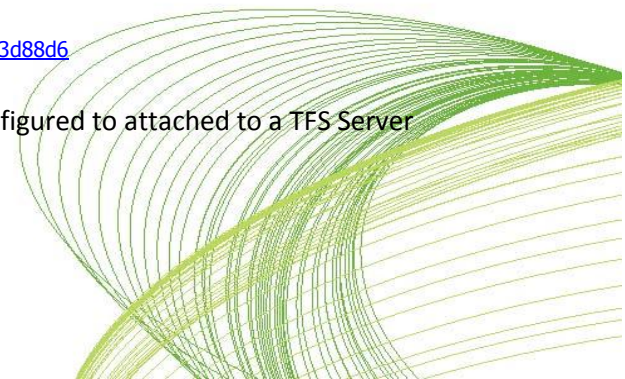
In addition to the MSSCCI client application (e.g. QlikView 11), you must have the following software installed to use the Microsoft TFS MSSCCI Provider:

- 1) Microsoft Visual Studio 2010 Team Explorer RTM

To access the Microsoft TFS MSSCCI Provider (version 1.2), download and install from

<http://visualstudiogallery.msdn.microsoft.com/bce06506-be38-47a1-9f29-d3937d3d88d6>

Once installed, you must ensure that your Team Explorer RTM is configured to attached to a TFS Server before continuing.



QlikView

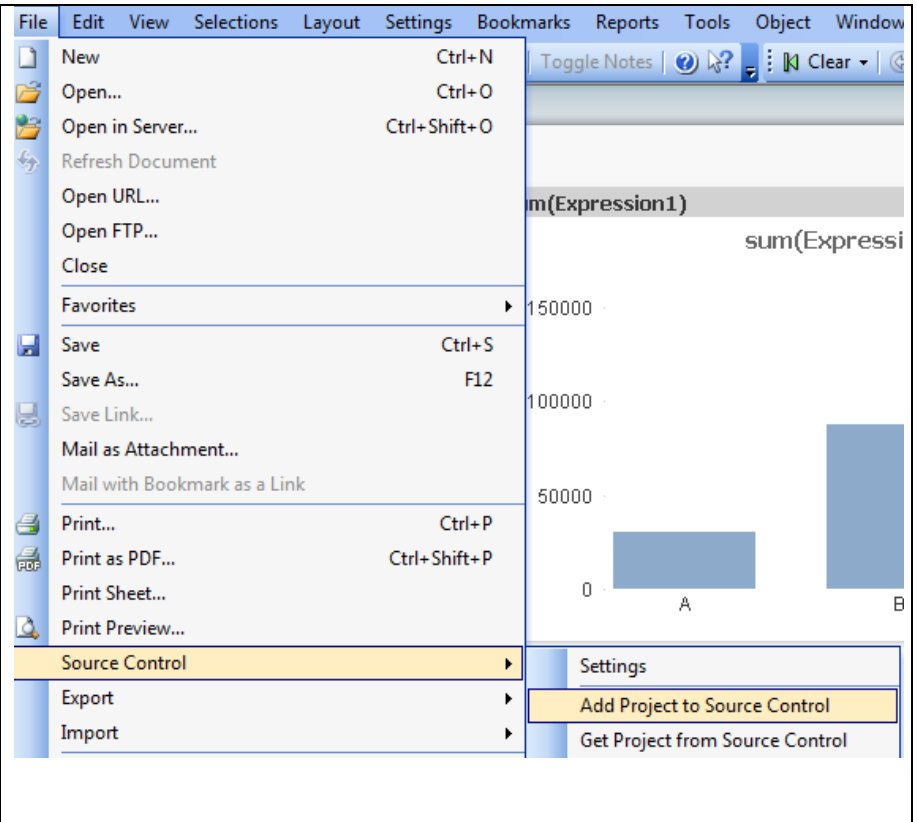
Specify the configuration within your QlikView 11 desktop. Specify the location of the MSSCCI provider via File>Source Control>Settings

The default location should be

C:\Program Files (x86)\Microsoft Team Foundation Server MSSCCI Provider\TfsMsscciProvider.dll

To start using Source Control and your QlikView documents

Create a QlikView. Decide to add it to Source Control.

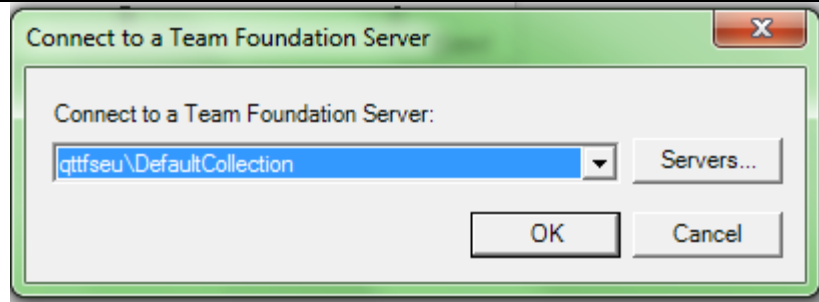


The screenshot shows the QlikView application window with the File menu open. The 'Source Control' option is highlighted, and its sub-menu is visible, showing 'Settings', 'Add Project to Source Control', and 'Get Project from Source Control'. The background shows a bar chart with two bars labeled A and B, and a text box containing 'sum(Expression1)'.

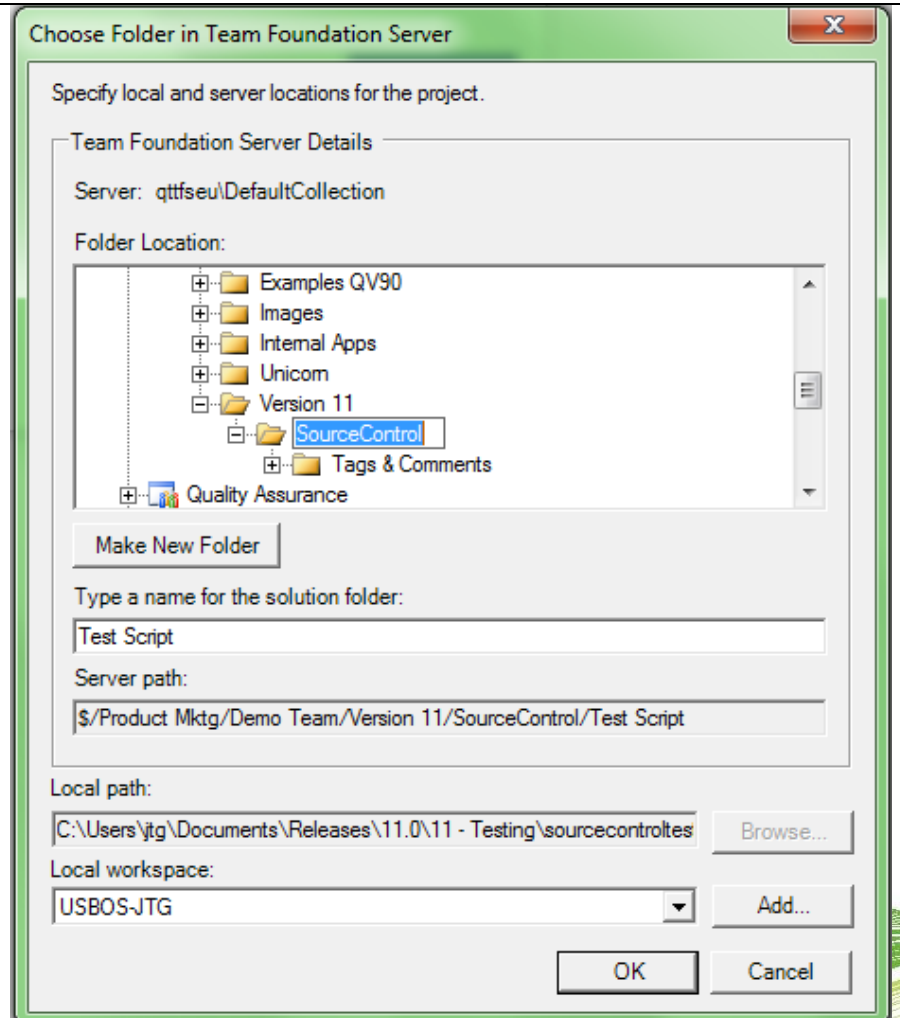
Category	Value
A	~30,000
B	~80,000



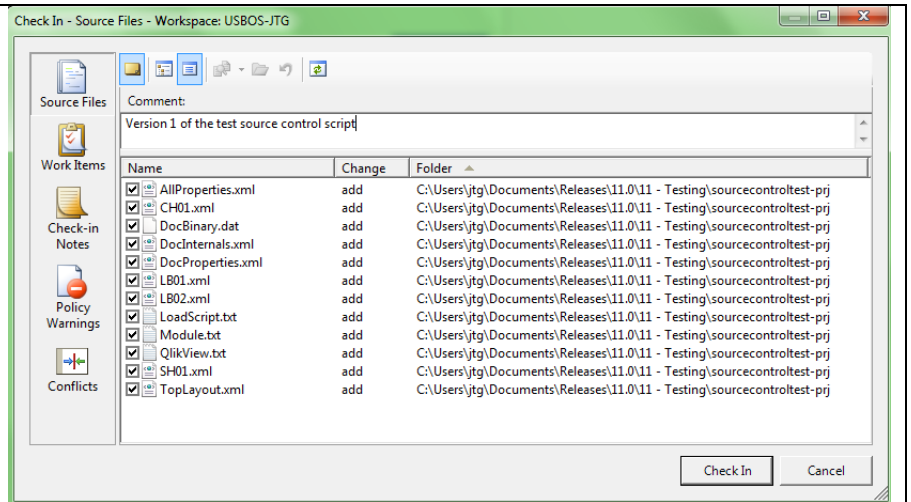
You will be prompted (by TFS) to connect to your TFS Server*



You will be prompted with a location to check in your document inside TFS*



TFS will confirm the component files (generated by QlikView) to check in*

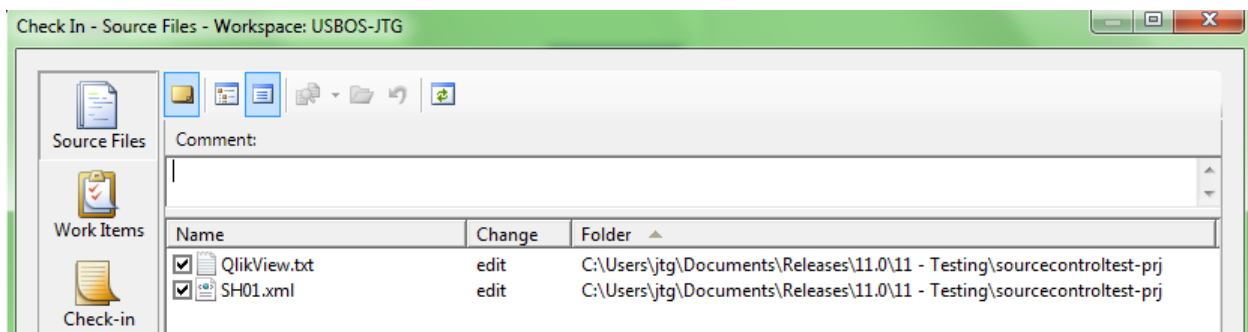


***All dialogs from the source control system, TFS in this instance**

To save changes to a QVW

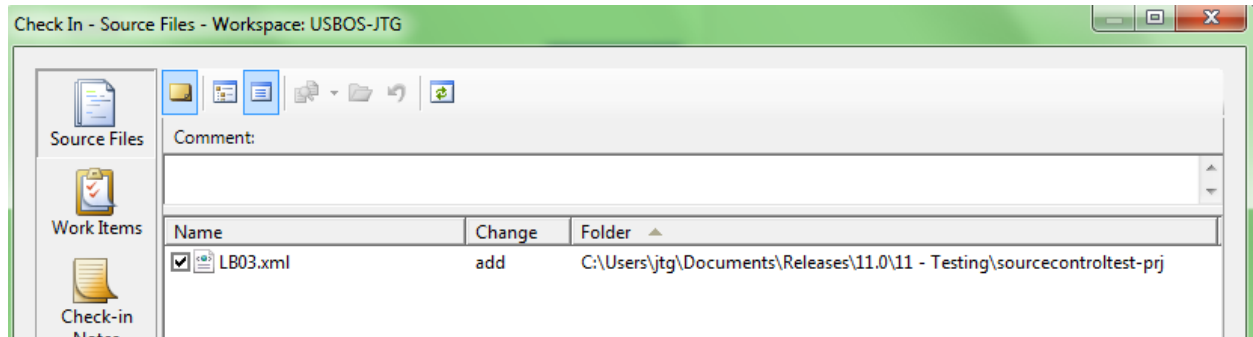
- 1) Open the QlikView
- 2) Get the Project or the Latest Image from source control, if you believe it has changed from the version you have locally.
- 3) Make changes to layout, logic.
- 4) Check In
- 5) Source Control will ask you to confirm each type of change made in the document – additions, changes and deletes. OK all dialogs otherwise inconsistency will result and you may no longer be able to open the QVW again. Note that you will be prompted to accept changes to entities that contain the places you made a change (e.g. sheets and document layout). Accept these changes as well.

E.g – Add a List Box. Prompted to save edits to document level QlikView.txt and Sheet SH01 definitions



QlikView

Then prompted to save the ADD that was the new list box



Business Cases

- Incorporating QlikView into enterprise best development practices.
- Answering questions about audit and compliance.

Upgrade Considerations

This is a new feature for QlikView 11. If you have utilized the Project Component File structure in Version 10 you will find that you cannot automatically add these to source control within QlikView. You may wish to remove the -prj directory and begin the process of adding the project to Source Control once you have QlikView 11 installed and your connectivity established.

Be aware of these limitations with QlikView 11 Source Control

- In QlikView 11 GA, support is provided for Microsoft TFS ONLY.
- For detail of changes in underlying -prj file structures and advanced & multi-user operations with the QlikView / Microsoft TFS integration, please see the whitepaper "QlikView 11 - QlikView-Microsoft TFS Source Control"
- Our goal is still to provide support for an open source control system such as Subversion. Development is still on going

