

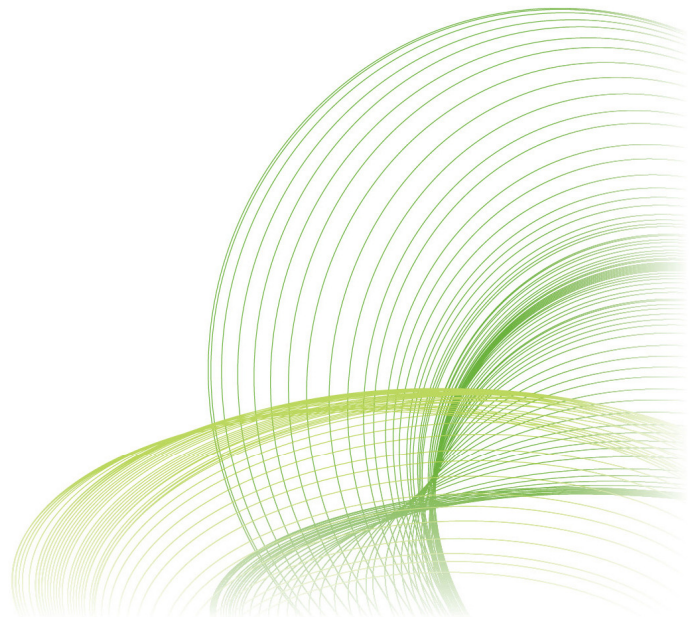


USING THE QLIKVIEW REPORT EDITOR

QlikView Technical Brief

September 2013

QlikView 11.2



Contents

INTRODUCTION	3
SET THE SCENE	4
FUNCTIONS, FEATURES AND TRICKS USED	4
STEPS TO CREATE A REPORT	5
ADDITIONAL THINGS TO CONSIDER	18
NPRINTING.....	18
CIA REPORTING MANAGER.....	18
SUMMARY	19
REFERENCES	19

Introduction

In this document, the steps to create a report in QlikView will be discussed. Occasionally, users like to have the ability to print a report of the visualizations they see in a QlikView application. QlikView's Report Editor allows users to print a nicely formatted report based on the current selections.

SUPPORTING MATERIALS

- **Demo.** The [Asset Management](#) demo located on demo.qlikview.com.

Set the Scene

In the Asset Management demo available on demo.qlikview.com, there are 2 document reports that the user can print: Investment Profile and Asset Under Management Dashboard. The Investment Profile report is available to the user when only one fund is selected/possible while the Asset Under Management Dashboard report is always available to the user to print. This document will review some helpful tips on how to create these reports and make them available to the user.

FUNCTIONS, FEATURES AND TRICKS USED

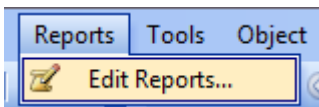
The following tricks and topics will be reviewed in this document:

- Document versus user report
- Single page versus multi page
- Banding
- Use of button to print report

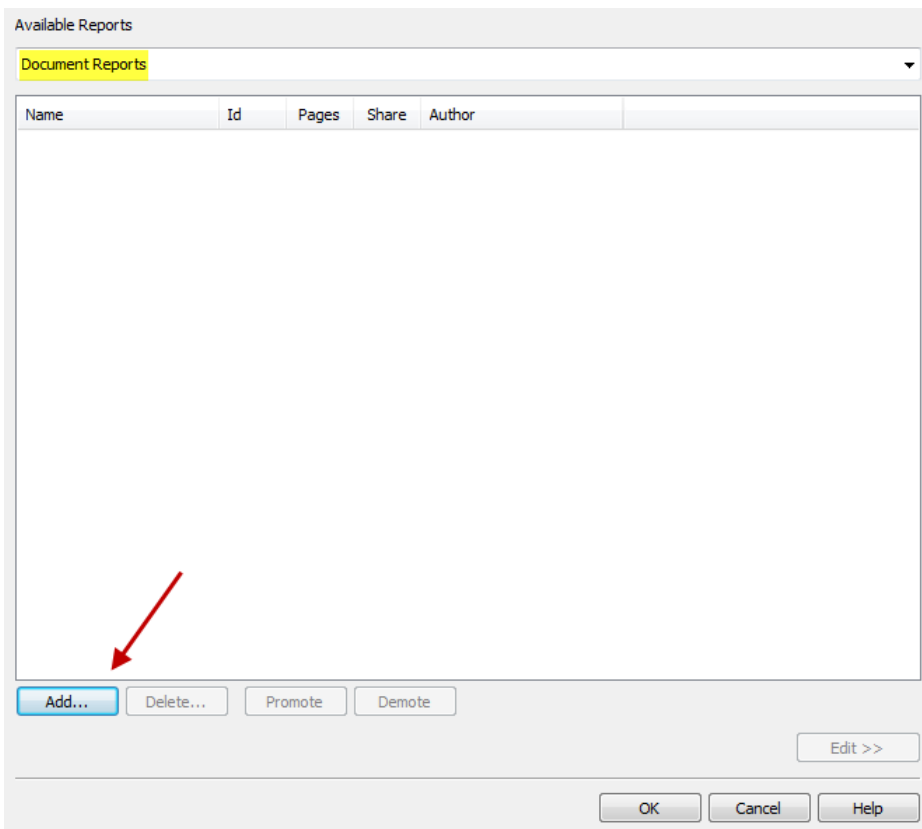
Steps to Create a Report

Often time the developer creates the report after the application is complete. The report is made up of QlikView visualizations and data in a report format that the user can print and take with them. Here are the steps taken to create the Investment Profile report that can be found in the Asset Management demo when a single fund is selected:

1. Open the Report Editor but clicking on Reports > Edit Reports...



2. The Report Editor will open. Click the Add... button at the bottom left of the page.

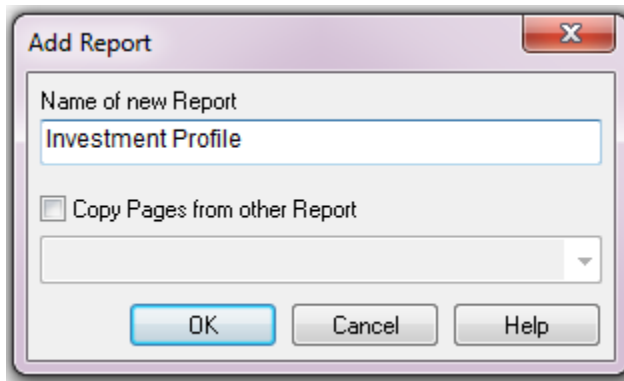


In this example, a Document Report is added but there is also the option to create a User Report. A Document Report is stored with the document and is

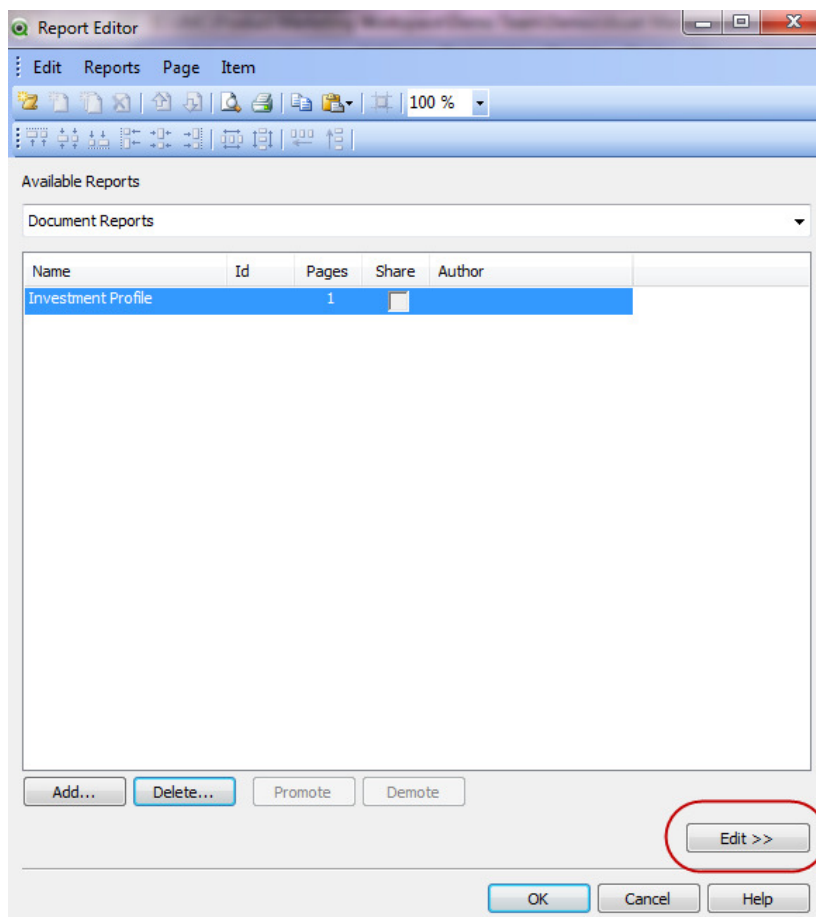
QlikView

therefore available to all users whereas a User Report is stored separately on the user's computer.

3. In the Add Report window, enter the name of the report and click OK.



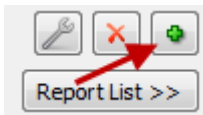
4. The added report will then appear in the Report Editor. To begin editing the report, click the Edit button at the bottom right.



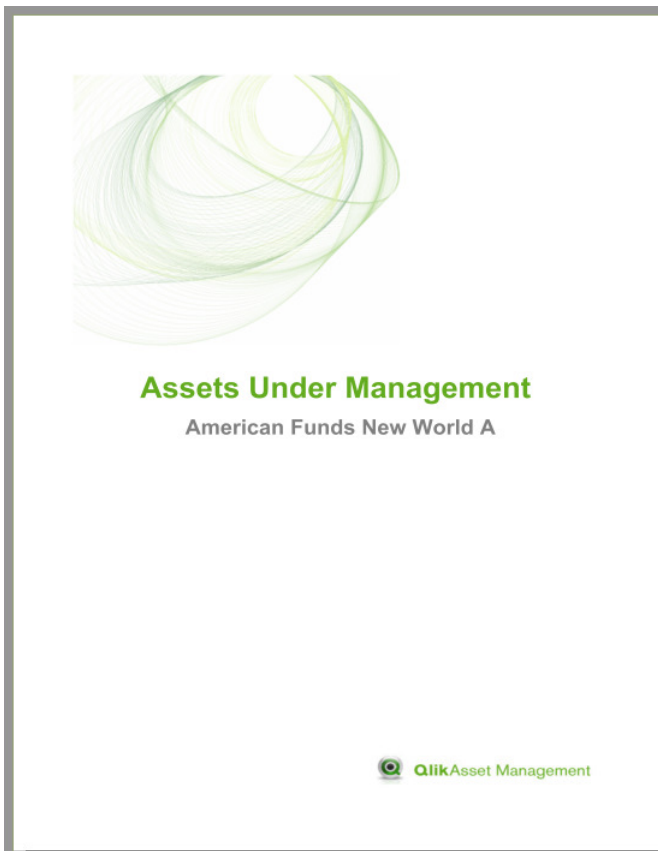
QlikView

5. Now you are ready to add objects to the report.

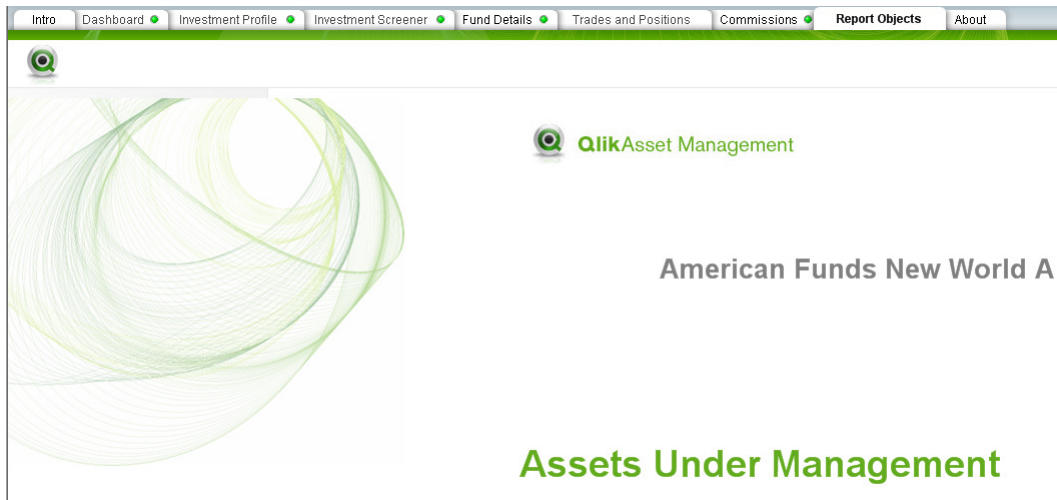
Let's start by adding a cover page for the report. Sometimes there may be the need to add objects to the report that do not already exist in the user interface of the QlikView application. For example, on the cover sheet, I would like to add an image and some text that is not in the application. This can be handled one of two ways. The first is to use the plus sign at the bottom right of the page to add an image, text object or current selection box.



The second way to handle this is to add a new sheet in the QlikView application named Report Objects. This sheet will store any objects that may be needed for the report that do not already exist in the user interface. These objects can then be added to the report by dragging them from the user interface of the QlikView application to the report page. For example, if the cover page is to look like this:



Then the Report Object sheet may look like the image below after I add the objects I want in the format I want.

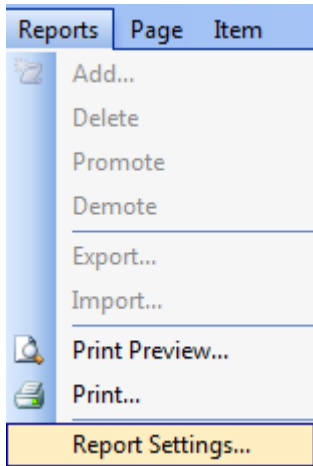


Note that the fund American Funds New World A is already selected in the application.

Add the images as well as text that should appear on the cover page of the report by dragging them to the report. Objects can be dragged individually or as a group. The Report Object sheet is where the objects are formatted as they should appear in the report. Formatting can be done in the Report Editor but I find it easier to format the sheet object. Sometimes, you may want to use a visualization in the application with some modifications such as removing a column from a straight table or changing the font size of a text object. When you need to do this, copy the object to the Report Object sheet and make the modifications there. This way the visualization in the user interface is not changed and the report can have the look and feel you want.

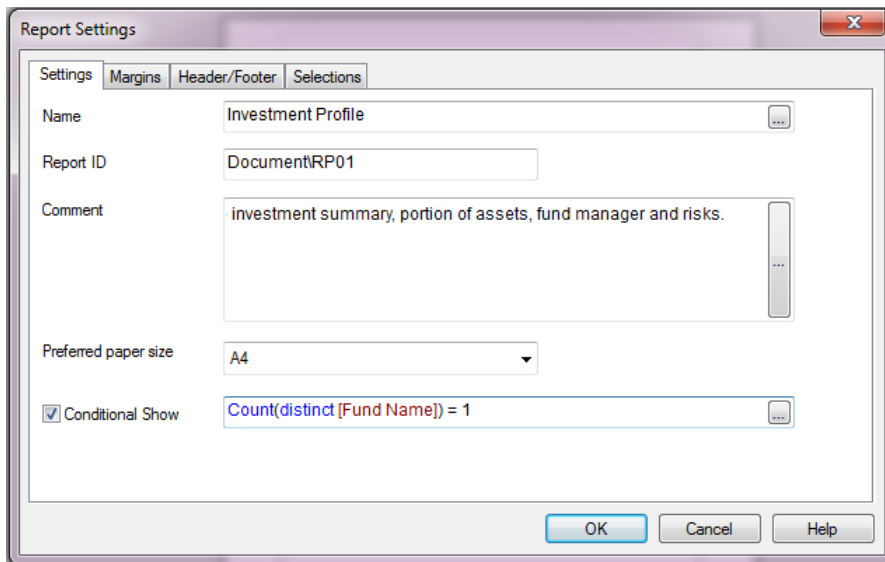
QlikView

- The Investment Profile report will be available to the user when only one fund name has been selected or is possible. In order to ensure this, select Reports from the menu and then click on Report Settings...



- In the Report Settings window, a description of the report can be entered as well as the preferred paper size of the report. In order to make this report available only when one fund name is selected, check Conditional Show and enter

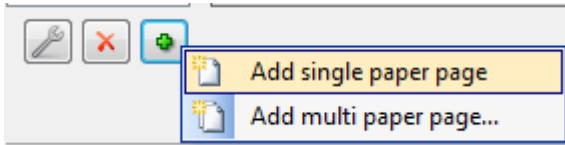
`Count(distinct [Fund Name]) = 1`



Then click the OK button.

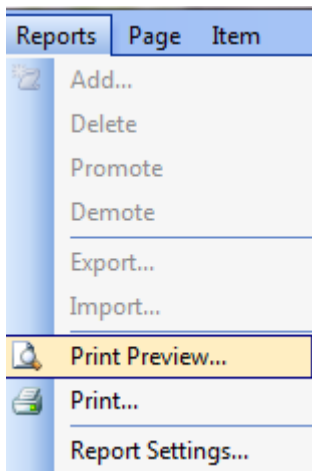
QlikView

- When you are done adding the objects to the cover page, then you are ready to add the second page of the report. Click on the + button at the bottom left of the page and select Add single paper page.



Another page will be added to the report.

- This sheet will mirror the Investment Profile sheet so I can drag and drop the objects from the Investment Profile sheet and add them to the report. Once I have added the objects, I can resize them as I see fit.
- To view how the report will look, preview the report by clicking on the Reports menu item and selecting Print Preview...



This is a nice way to make sure the report looks good. It is also a good idea to print the report to ensure the text is readable.

- Now that the Investment Profile report is complete, we are ready to start the Asset Under Management Dashboard report. This report will mirror the Dashboard sheet and the Funds Performance chart on the Investment Screener sheet. Close the Print Preview window and click on the Report List >> button to return to the list of reports.

American Funds New World A
Fund Size \$ 517,360,000

Investment Summary
This Fund is a series of actively managed, domestic funds that may provide a complete portfolio in a single fund. The four funds, each with a different allocation, each pursue risk-based objectives. The Conservative Growth Fund seeks a high level of income and moderate long-term capital appreciation. The fund holds approx...

Investment Details
Asset Class: Equity
Fund Manager: Dan Flannery

Return of Assets Under Management
Investment
Other investments

Return of \$1M
Investment
Other investments

Top 10 Holdings
All other holdings

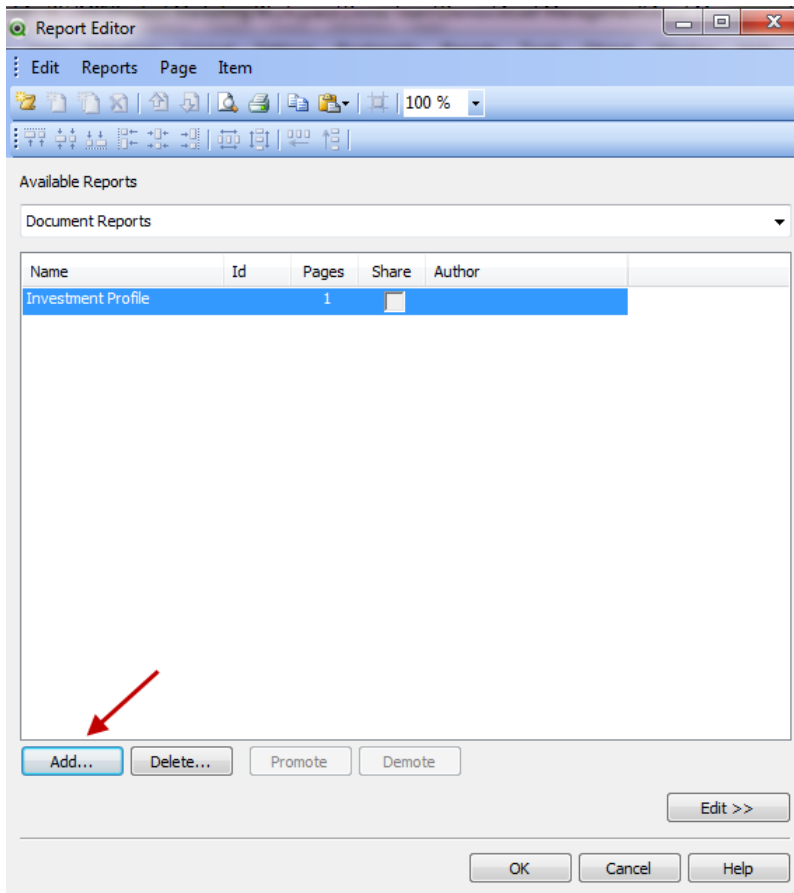
	1 year	3 year	5 year	10 year
Risk	-1.48	-0.03	0.08	0.34
Beta	1.00	0.98	-0.76	-0.29
Mean annual return	16.48	11.03	-0.08	-0.34
Maximum	100.00	100.00	84.00	71.00
Standard deviation	14.38	10.98	7.70	8.63
Sharpe ratio	0.42	0.02	-0.07	-0.12

Sector	YTD	Last YTD
Consumer Discretionary	3.33%	4.03%
Consumer Staples	2.58%	3.10%
Energy	1.72%	2.08%
Financials	1.72%	2.08%
Health Care	1.98%	1.98%
Industrials	1.98%	1.92%
Information Technology	1.54%	1.87%
Materials	1.57%	1.87%
Telecommunication Services	1.47%	1.78%
Utilities	1.38%	1.62%

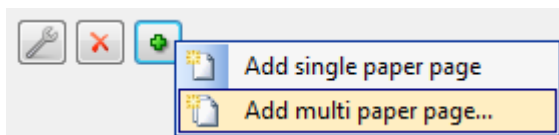
Holdings	YTD
Johnson Controls Corporation	4.88%
Apple, Inc.	3.16%
Chromalloy	2.41%
International Business Machines Corp	2.41%
General Electric Co	2.32%
Johnson & Johnson	2.24%
AT&T Inc	2.18%
Johnson & Johnson	2.11%
The Procter & Gamble Co	2.08%
Pfizer Inc	1.82%

Report List >>

12. Click the Add button to add the report as we did when creating the Investment Profile report.



13. The cover sheet and the first page of the report can be created similar to the Investment Profile Report. The difference in this report is the last page(s). In this report, we want to add a table of the funds and their performance. This table can vary in length depending on the selections. In order to handle this, the last sheet of the report will be a multi paper page. This will allow the table of funds to be displayed across more than one page if necessary. Click on the + sign and add a multi paper page.



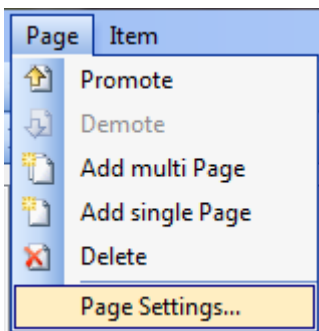
QlikView

14. In the report, I would like to show the funds and their performance grouped by asset class. To begin, I will add a header so that the user knows which asset class is being displayed. Create a text object on the Report Objects sheet with the following expression:

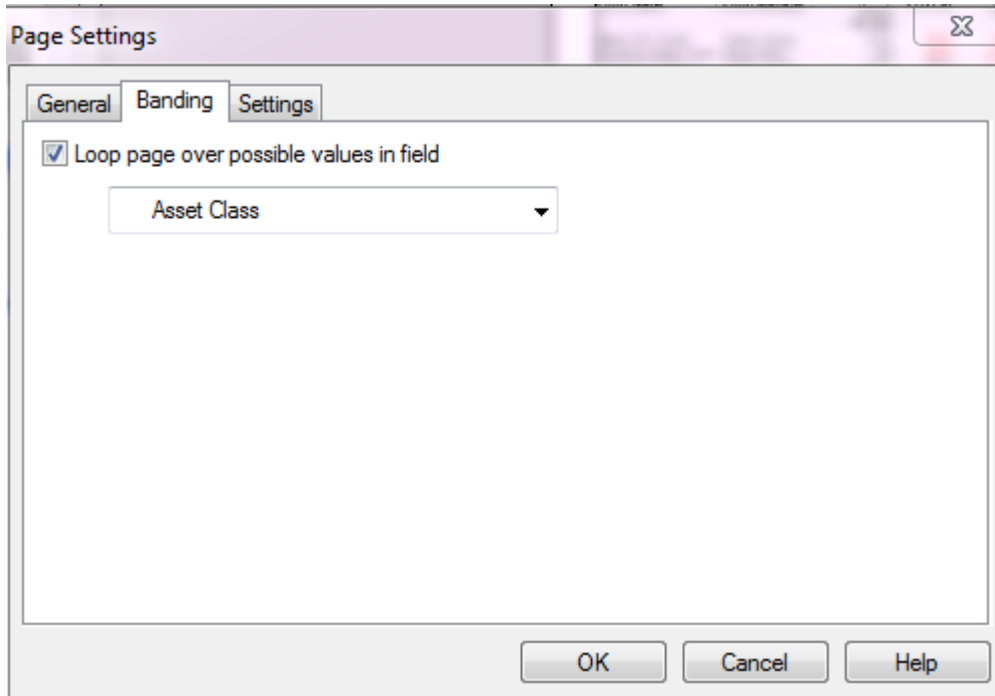
```
= 'Asset Class : ' & [Asset Class] & ' (' & Count(distinct [Fund Name]) & ' funds)'
```

This will display the asset class and the number of funds in that asset class.

15. Now the Fund Performance chart from the Investment Screen sheet can be added to the report page by dragging and dropping.
16. To show the funds by asset class, we need to make a change in the Page Settings. Open the Page Settings by clicking on Page in the menu and Page Settings.



- Go to the Banding tab and check the Loop page over possible values in field check box and select Asset Class from the drop down list.



- Now if we Print Preview the report, we can see that the asset class and the number of funds is displayed at the top of the table and changes accordingly. Here are some examples:

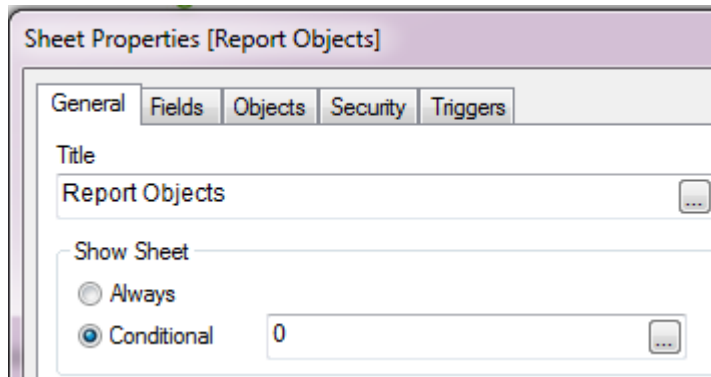
Asset Class : Alternatives (45 funds)

Fund Name	Fund Manager	Fund Size (\$mm)	YTD (%)	1 month (%)	3 months (%)	1 year (%)	3 years (%)	5 years (%)
		43,471						
Allianz NFJ Small ...	Walton Dolney	616	-24.0	-6.0	24.0	-32.0	-	-
American Funds A...	Walton Dolney	701	48.0	-32.0	37.0	33.0	35.0	40.0
American Funds A...	Aubrey Hess	67	-3.6	-0.6	-0.9	-	-	-
American Funds A...	Bertram Allison	482	517.0	-0.5	95.9	239.1	235.7	-
Bridgeway Aggress...	Philip Brancati	174	33.0	42.0	-2.0	36.0	22.0	28.0
Cohen & Steers Re...	Kristie Pearson	1,563	-10.0	-22.0	-23.0	-2.0	-23.0	-29.0
Credit Alpha	David Falchi	842	295.6	-11.8	136.5	612.3	971.1	-
Dodge & Cox Income	Howard Otte...	176	1.0	0.2	0.3	-0.1	-6.2	-

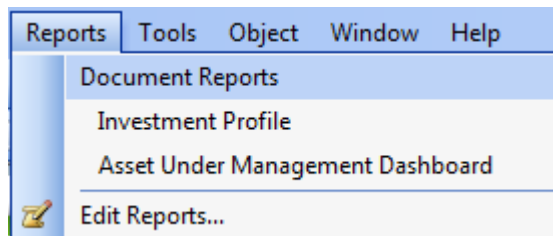
Asset Class : Equity (138 funds)

Fund Name	Fund Manager	Fund Size (\$mm)	YTD (%)	1 month (%)	3 months (%)	1 year (%)	3 years (%)	5 years (%)
		82,017						
Allianz NFJ Small ...	Walton Dolney	308	-12.0	-6.0	24.0	-32.0	-	-
American Equity Fund	Royce Mintz	226	-24.0	-42.0	-22.0	-39.0	25.0	-42.0
American Funds A...	Walton Dolney	234	16.0	-32.0	37.0	33.0	35.0	40.0
American Funds A...	Aubrey Hess	112	-6.0	-0.6	-0.9	-	-	-
American Funds A...	Bertram Allison	161	172.3	-0.5	95.9	239.1	235.7	-
American Funds Eu...	Clyde Ward	342	-1.0	-39.0	30.0	49.0	-	-
American Funds N...	Joan Haynes	517	29.0	32.0	6.0	-16.0	-29.0	-45.0
Artisan International...	Danilo Deleon	472	-1.0	-6.0	-3.0	13.0	-4.0	-4.0
Asia Pacific Capital...	Philip Brancati	227	20.0	-6.0	2.0	24.0	-23.0	-2.0
Asia Pacific ex Jap...	Michal Colvin	405	-25.9	-20.2	-13.7	-42.2	36.8	-

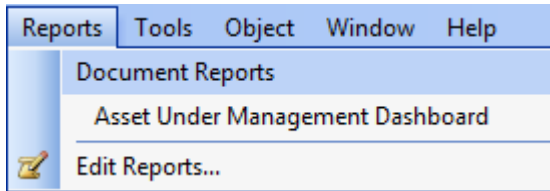
19. When you are done creating the reports, you can hide the Report Objects sheet by setting Show Sheet to Conditional and entering 0. This keeps this sheet from being visible to the users.



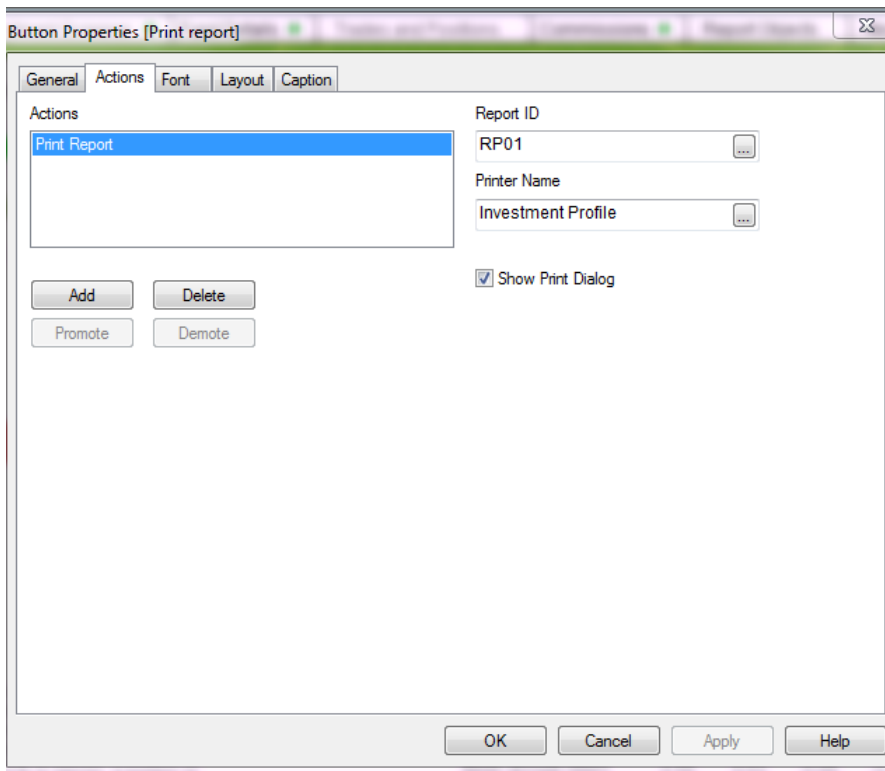
20. Now that the reports have been added to the application, the users can access them by going to the Report menu and selecting the report.



21. If a single fund was not selected the Investment Profile report would not be visible in the list.



22. I would also like the Investment Profile report to be printable from the Investment Profile sheet by clicking a button. To do this, I will add a Button object with the image I would like to use to the Investment Profile sheet.
23. Next add the Print Report action to the button. Right-click on the button and select Properties. Enter the Report ID (which can be found in the Report List in the Report Editor). Enter the name of the report and check the Show Print Dialog check box if you want the Print dialog window to open before printing the report.



24. Click OK.

25. The user can now print the Investment Profile report by clicking the Print report button on the Investor Profile sheet.



The Asset Management demo now has two reports that are available to the user to print.

Additional Things to Consider

While QlikView Report Editor provides the ability to print reports from QlikView, sometimes users require a more robust reporting option that provides functionality that out-of-the-box QlikView does not offer. Vizubi and Computer Intelligence Associates are two QlikView partners that provide report generation, distribution and scheduling in various formats such as PDF, HTML, Word, Excel and PowerPoint.

NPRINTING

By [Vizubi](#)

Quote from QlikMarket:

“NPrinting is the most advanced report generation, distribution and scheduling application for QlikView on the market. It lets you create and modify reports quickly, generate and filter them based on updated data and distribute them to whom and when you need. Get the right information to the right people at the right time.”

Learn more about NPrinting on QlikMarket - <http://market.qlikview.com/nprinting.html>.

CIA REPORTING MANAGER

By [Computer Intelligence Associates, Inc](#)

Quote from QlikMarket:

“Report Manager is an add-on product to QlikView that provides high fidelity reporting. Reports can be generated by users on demand or automatically. Report Manager provides pixel level control over format and distribution of professional looking reports in PDF, Excel, Powerpoint, Word, and HTML formats. Using a simple Web portal both QlikView Administrators and power users can manage 100's of Reports each with their own distribution and schedule. Drop in buttons into your existing QlikView Dashboards to allow users to generator professional looking reports on-demand based on their Qlikview current selections.”

Learn more about CIA Report Manager by Computer Intelligence Associates, Inc. on QlikMarket - <http://market.qlikview.com/cia-report-manager.html>.

Summary

In this technical brief, the steps to create a report using QlikView's Report Editor were outlined. Visualizations from the user interface can be used to create a printable formatted report that the user can take with them. Please keep in mind that the data in a printed report is static and may vary from the data in the application if the application is reloaded.

References

Below are supporting materials that may be helpful:

Demo – [Asset Management](#)

www.qlikview.com