

QlikView
WorkBench

Copyright © 1994-2010 Qlik®Tech International AB, Sweden.

Under international copyright laws, neither the documentation nor the software may be copied, photocopied, reproduced, translated or reduced to any electronic medium or machine-readable form, in whole or in part, without the prior written permission of QlikTech International AB, except in the manner described in the software agreement.

Qlik®, QlikTech ®,and QlikView®, are trademarks and registered trademarks of QlikTech International AB.

Other trademarks are the property of their respective owners and are hereby acknowledged.

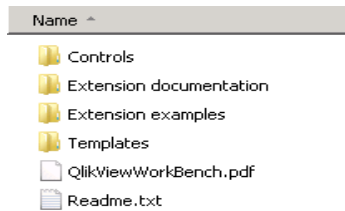
Content

| | | |
|----------|--|-----------|
| 1 | Installing QlikView WorkBench | 4 |
| 2 | Creating a Web Site | 5 |
| 3 | Building a Web Page | 7 |
| | Property Viewer..... | 8 |
| | QlikView Object..... | 9 |
| | QlikView Settings..... | 10 |
| | The Source View..... | 10 |
| 4 | Running the Page in Visual Studio | 12 |
| 5 | Appendix A - Inline Styles | 14 |

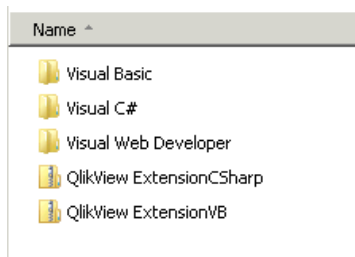
1 Installing QlikView WorkBench

1. Start the installation program, QlikViewWorkBench_x64Setup.exe or QlikViewWorkBench_x86Setup.exe.
2. The installation unpacks the files and computes the space needed for the installation. A welcome screen is then displayed. Click **Next** to continue.
3. You now come to the software license agreement. Read it, and click **I accept the terms of the license agreement**, then click **Next**.
4. In the **Customer Information** dialog you specify for whom the installation will be personalized. Click **Next** to continue.
5. The next dialog shows the default installation path of the program. Click **Change** to enter an alternate path for the installation. Then click **Next**.
6. In the **Default Values** dialog, you enter the path to the **QvAjaxZfc** virtual directory on you web server, either QlikView Web Server or Microsoft IIS. Click **Test url** to confirm the path to the directory.
7. You are now ready to install the program. Click **Next** to install the files.
8. After the installation is done, click **Finish** to complete the process.

The following folders are now installed in either the default installation path, C:\Program Files\QlikView\WorkBench, or the path you choose during the installation.

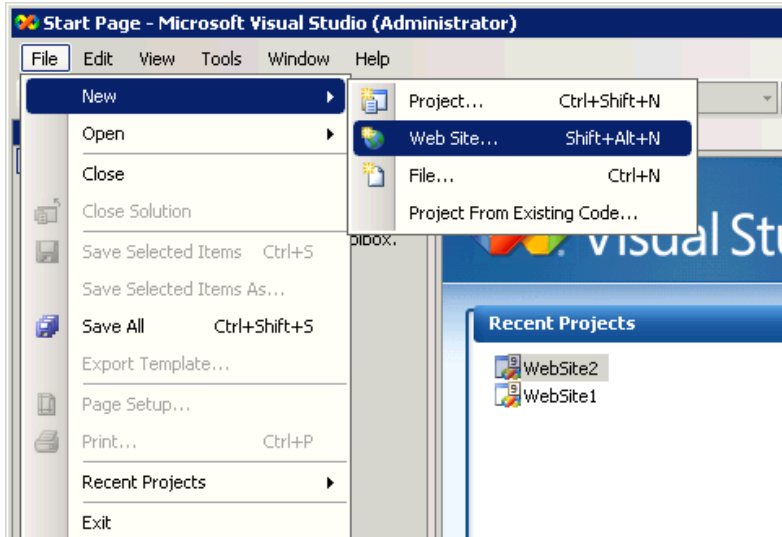


The templates that come with QlikView WorkBench are installed to C:\Program Files\QlikView\WorkBench. They are also installed in Visual Studio and available when creating a new web site.



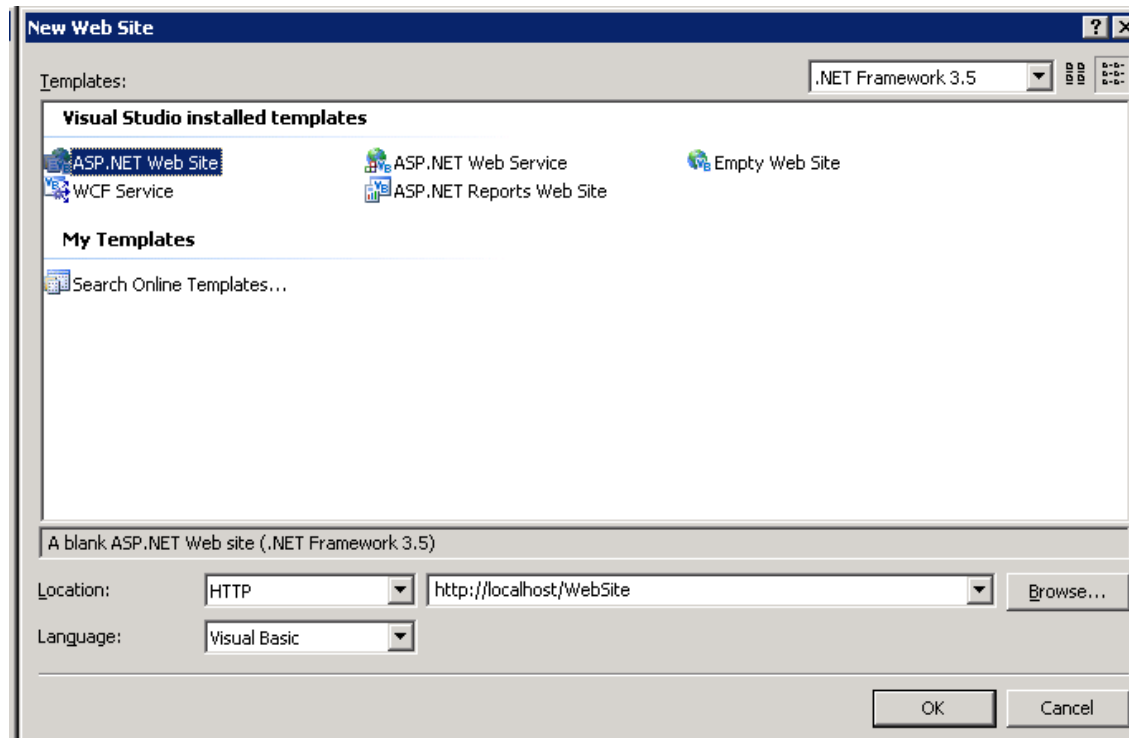
2 Creating a Web Site

Open **Microsoft Visual Studio** and choose **File**, then **New** and **Web Site** to create a new empty web site.



You will be presented with the **New Web Site** dialog, where you choose the **Language** (C#, Visual Basic), and the **Location** for your web site. Click **OK** to create it.

Note! The **Location** must be **http** when using Microsoft IIS 7 or newer!



The web site has now been created and you can see it in the **Solution Explorer** (if you do not see it, you can bring it up from the **View** menu).

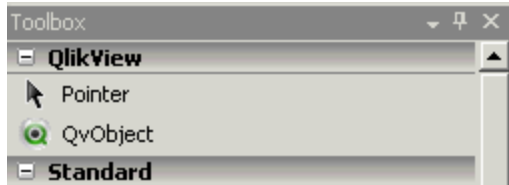
The **Solution Explorer** shows the structure of the web site. The items `QlikViewWorkBench.dll` and `QlikViewWorkBench.xml` are not displayed until the `QvObject` has been added on a page in the solution.



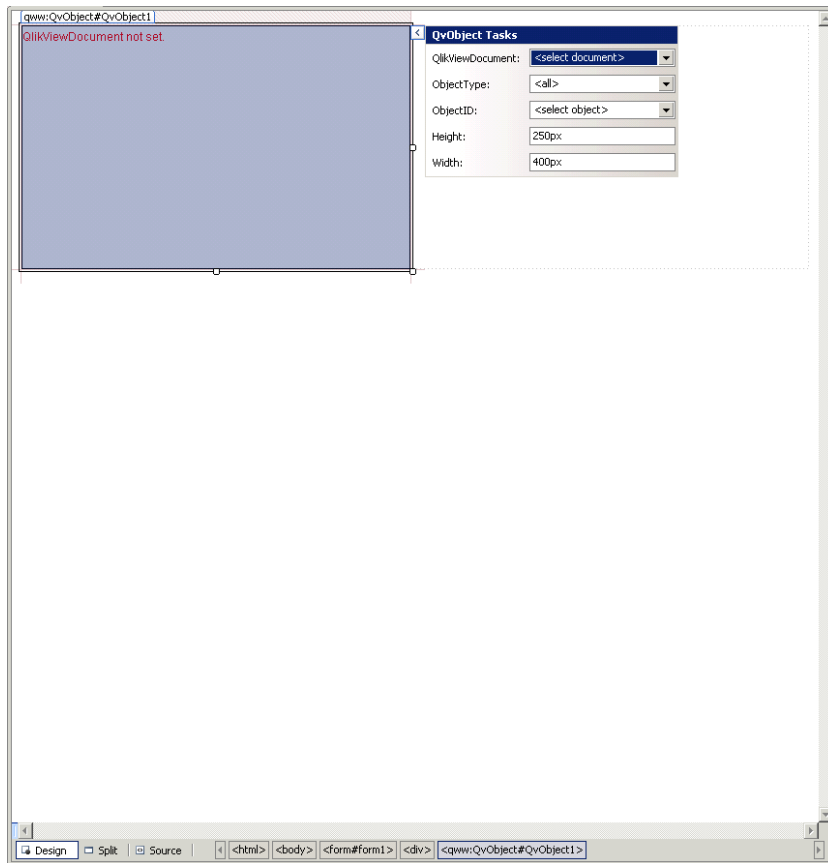
3 Building a Web Page

Bring up the default.aspx web page in **Design Mode**. Open the **Toolbox** (if you cannot see it, you can bring it up from the **View** menu).

In the **Toolbox** you now see the **QlikView** area.



Select the **QvObject**. Drag the control to the web page. When you do this, you will see the object and a **Smart Tag**. A **Smart Tag** is a feature of Visual Studio which presents the most common or essential properties that you need to set on the control. To bring up the **Smart Tag** at any time, click on the arrow tab on the top right corner of the control.



The **Smart Tag** contains the following settings:

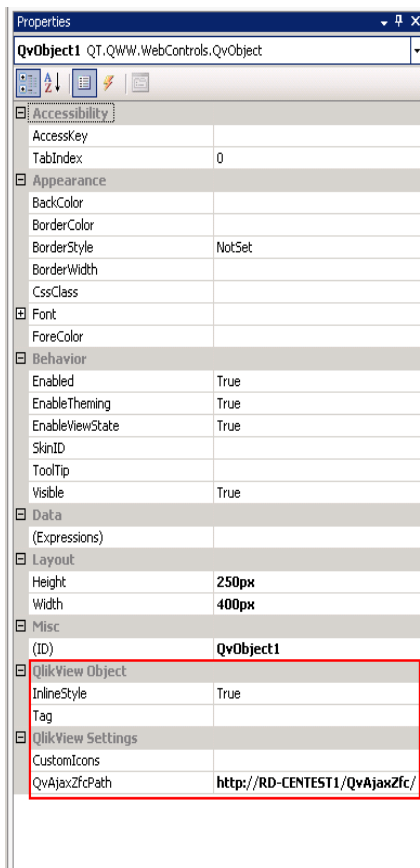
QlikViewDocument Select a document present on the QlikView Server to connect to.

| | |
|--------------------|--|
| Object Type | Select an object type from the QlikView document. This will filter the list for Object ID . |
| Object ID | Select an object from the QlikView document. |
| Height | Set the height of the object on the web page. |
| Width | Set the width of the object on the web page. |

Note! If you cannot see any documents in the **QlikViewDocument** setting, you may have the wrong path in the setting **QvAjaxZfcPath**. See below.

Property Viewer

The object also has a properties view. Right-click on the QvObject to bring up the **Properties** pane. Only the properties under **QlikView Object** and **QlikView Settings** are relevant to the QlikView Object.



QlikView Object

InlineStyle

Some styles are set using a stylesheet created by the QlikView Server's Ajax engine. These styles can be overridden in your own custom stylesheet. However, other styles are added to the inline HTML generated by the QlikView Server Ajax engine. These styles cannot normally be overridden in your own custom stylesheet. However, changing this setting from the default **True** to **False** will allow these inline styles to be overridden in your custom stylesheet. The styles that are provided inline by the QlikView Server Ajax engine are styles regarding fonts, borders and colors. Read more about the inline styles in See "Appendix A - Inline Styles" on page 14

Define your own tag for the object that can be used in, for instance JavaScript. This can be used for customizing a QvObject, marking a QvObject for special action, distinguishing between one QvObject and another at run time, etc. This information can be used to better integrate your QvObject. Note: The tag is added as an attribute of the QvObject's `div` tag. Here is an example of a function that retrieves an array of tag attributes from all the QvObject on a webpage:

Tag

```
<script type="text/javascript">  
    GetAllQvObjectsByTag = function(tag) {  
        var tagObjs = [];  
        var divs = document.getElementsByTagName("div");  
        for (var i = 0; i < divs.length; i++) {  
            if (divs[i].getAttribute("Tag") == tag) {  
                tagObjs.push(divs[i]);  
            }  
        }  
        return tagObjs;  
    }  
</script>
```

QlikView Settings

Enter substitute images for caption icons. The syntax is `icon code:icon url`. The following icons can be replaced by custom icons. Their icon code precedes the name of the icon.

CustomIcons

LS - Lock Excluded

US - Unlock Selected

CA - Clear All

CA.Disabled - Clear All Disabled

SE - Select Excluded

SP - Select Possible

SA - Select All

SEARCH - Search

XL - Send to Excel

CD - Clear

PR - Print

HELP - Help

QvAjaxZfcPath

Enter the path to your QlikView Web Server and the Ajax folder, e.g. `/QvAjaxZfc/` for using a local web server. To use a remote server enter the http address, e.g. `http://Qv-WebServer/QvAjaxZfx/`.

The properties defined in the **QlikView Settings** group affect all QlikView objects on the page.

The Source View

A web page can be viewed in **Design** mode and in **Source** mode. The latter shows the actual code of the web page.

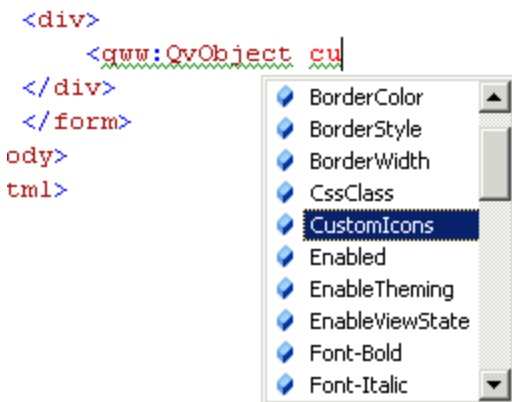
```

<%@ Page Language="VB" AutoEventWireup="false" CodeFile="Default.aspx.vb" Inherits="_Default" %>
<%@ Register Assembly="QlikViewWorkBench" Namespace="QT.QVW.WebControls" TagPrefix="qvw" %>
<!DOCTYPE html PUBLIC "-//W3C//DTD XHTML 1.0 Transitional//EN" "http://www.w3.org/TR/xhtml1/DTD
<html xmlns="http://www.w3.org/1999/xhtml">
<head runat="server">
  <title>Untitled Page</title>
</head>
<body>
  <form id="form1" runat="server" enableviewstate="False">
    <div>
      <qvw:QvObject ID="QvObject1" runat="server" CustomIcons="" ObjectID="LB01"
        ObjectType="Button" QlikViewDocument="Data Visualization (Local)" />
    </div>
  </form>
</body>
</html>

```

The code in the highlighted area is the code created by inserting the QvObject on the page.

It is possible to type in the properties you want here. Thanks to full integration with Visual Studio, you have the advantage of IntelliSense, that is, Visual Studio shows you all of the available properties and methods that the control has.

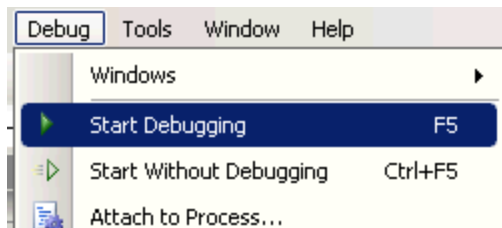


4 Running the Page in Visual Studio

Now that an object is on the page we can run the web site from Visual Studio. You can do this in a number of ways. You can press F5, click the **Run** button on the toolbar



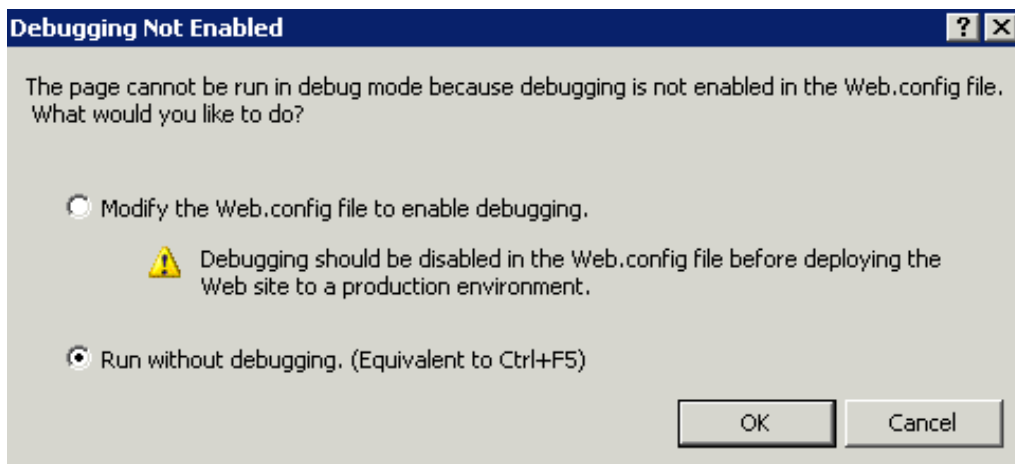
or from the **Debug** menu



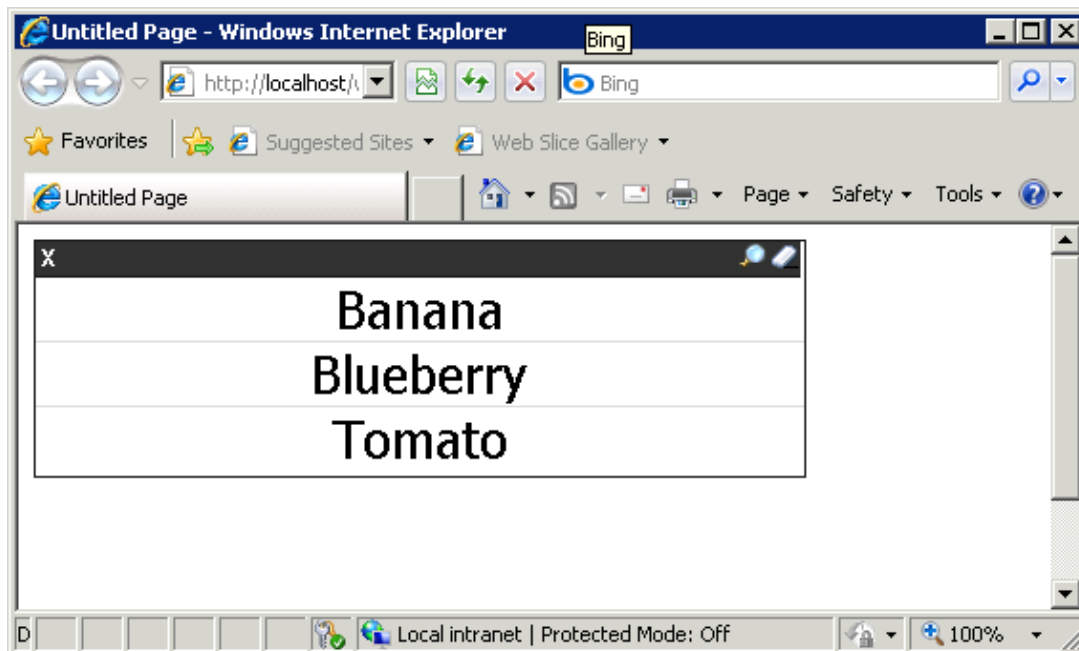
Visual Studio will prompt you with a message concerning debug information. Choose the first alternative to have Visual Studio edit your `web.config` file and you will not receive this message again. To re-enable the message, set compilation debug to false in `web.config`:

```
<compilation debug="false" strict="false" explicit="true">
```

If you do not want to edit the `web.config` file, you should choose **Run without debugging**.



Your web site is now displayed in you Internet browser.



5 Appendix A - Inline Styles

Some styles are set using a stylesheet created by the QlikView Server's Ajax engine. These styles can be overridden in your own custom stylesheet. However other styles are added to the inline HTML generated by the QlikView Server Ajax engine. These styles cannot normally be overridden in your own custom stylesheet. However, changing this setting from the default True to False will allow these inline styles to be overridden in your custom stylesheet.

The styles that are provided inline by the QlikView Server Ajax engine are:

fontfamily, fontsize, fontstyle, fontweight, textalign, verticalalign, textdecoration, paddingTop, paddingLeft, paddingRight, paddingBottom, color

background-color, color, text-align, font-style, font-weight, text-decoration, font-size, border-bottom, border-top, border-left, border-right

MozBorderRadiusTopleft, MozBorderRadiusTopright, MozBorderRadiusBottomleft, MozBorderRadiusBottomright

WebkitBorderTopLeftRadius, WebkitBorderTopRightRadius, WebkitBorderBottomLeftRadius, WebkitBorderBottomRightRadius