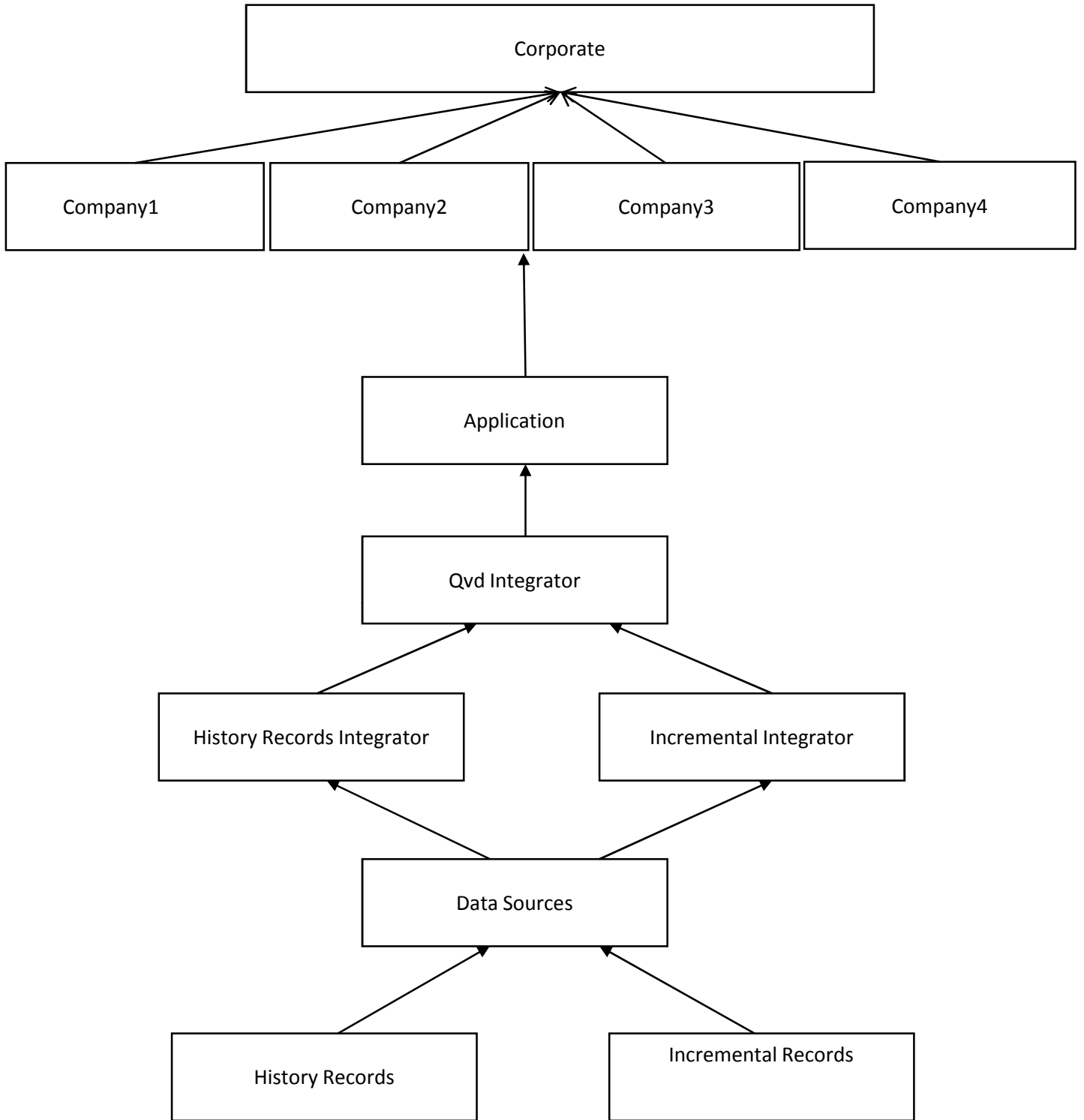


**CORPORATE- INCREMENTAL LOAD**



**DESCRIPTION:** This is just a sample which we are trying to do the incremental for a corporate. Actually Corporate office and its subsidiaries are located in different places. All has the network connectivity. The Top management wants to see the Sales dash boards of all the companies in one application.

History Records

It is a folder which has the QlikView applications.  
It will download the history records which will be done at once.

Incremental Records

It is a folder which has the QlikView applications.  
It will download the incremental records daily at midnight.

Data Sources

It is just a folder. History records and incremental records are under this folder.

History Records Integrator

It will do the manipulation for history records which required to make the data modelling as simple as possible. For example, if the sales table has the Header and Detail table, these two has been merged as one Sales table. It picks the data from the History records folder.

Incremental Integrator

It will do the manipulation for Incremental records which required to make the data modelling as simple as possible. For example, if the sales table has the Header and Detail table, these two has been merged as one sales table. It picks the data from the incremental records folder.

Qvd Integrator

It is just a folder which has history records integrator and incremental integrator.

Application

Application is a folder name and It has all the applications like sales etc.. It loads the QVD from History records integrator and the data modelling is done here and finally stored as QVD

Company2  
(Application QVD + Incremental)

It has the applications like sales,finance etc..It just loads the data from application and the incremental data from the Incremental integrator.

**QVD from Application Folder:**

It is already processed data.No need to do any calculation. So,it can be directly loaded to the application.It will be very fast.

**QVD from Incremental Integrator:**

The manipulation / calculation done for these incremental records.The data volume is very low for a day and it will be more speed even if we are calculating.

Application QVD and Incremental QVD has been merged as One QVD Table.This QVD is written back to Application Folder QVD.So the history data is getting appended when ever this application is loaded.

Corporate Application

It is a corporate application which has company wise sales dashboards. It will get the QVD from the relevant company folders.It doesn't required much calculation.So,it will be more speed.

\*\*\*\*\*