

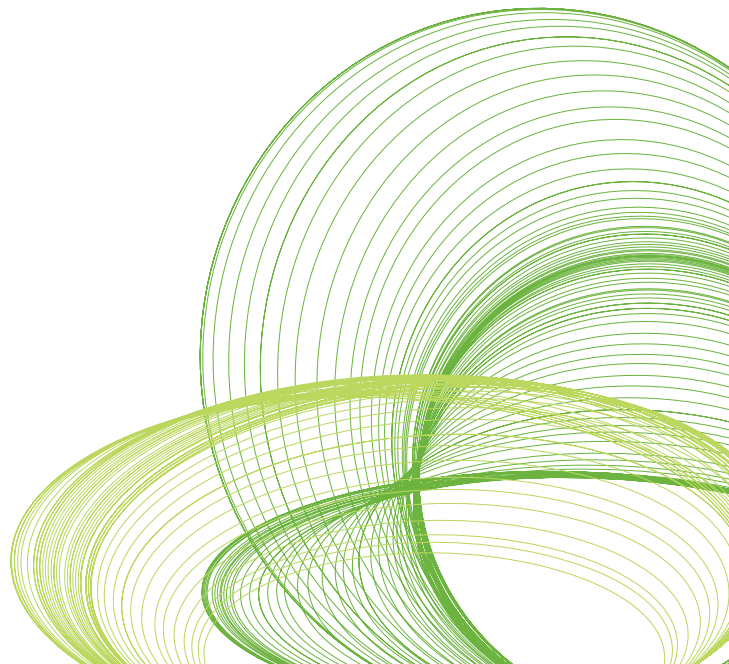


QLIKVIEW LICENSE LEASING

QlikView Technical Brief

February 2012

qlikview.com



Introduction

This document describes the process to allocate licenses to users from QlikView Server (QVS) through the License Lease process. The document will discuss the approach adopted by QlikTech to licensing QVS and Users and will not cover the licensing of additional QlikView components such as Publisher, the SAP connector, WebParts or WorkBench.

Background

In early versions of QlikView prior to version 9, individual license keys were issued for QVS, Publisher and additionally for each QlikView Developer or Professional User (Power user requiring restricted development capabilities). Customers with large deployments consisting of many developers and professional users were issued with numerous license keys that needed to be allocated, installed and managed manually.

Each Developer or Professional user would be issued with a unique license key that would need to be installed on their local workstation in order to remove the restrictions of the QlikView trial software.

Typically a manual record of license allocations would need to be kept and maintained to track which licenses belonged to whom. Such an approach could be prone to error or become neglected increasing the likelihood of the customer breaching the licensing agreement.

Local license keys ensure offline development capabilities only and offer no online access to documents on the server. Prior to version 9, additional Client Access Licenses (CALs) would also be required for the QVS if developers were to have access to the documents deployed on the server.

A smarter license management solution was required to ensure that organizations could manage their QlikView licenses more effectively as employees joined and left the company. A systematic mechanism was also required to safeguard customers from exceeding their license allocation so as to ensure compliance at all times.

To tackle this problem and simplify license management for customers, the License Lease feature was introduced in QlikView version 9 and has remained an integral part since.

License Lease

License Lease was introduced in version 9 for QVS environments and was designed to alleviate the need to issue individual license keys to users requiring a desktop installation of QlikView by combining all user licenses into the license key of the QVS. This ensured that a single license key could be issued to customers for QVS which included the configurations for all associated users, including offline developers. Furthermore, License Lease alleviates the need for Developers wishing to have access to server documents to have a separate Local License key and a CAL on the server by combining the two into a single Named CAL with License Leasing.

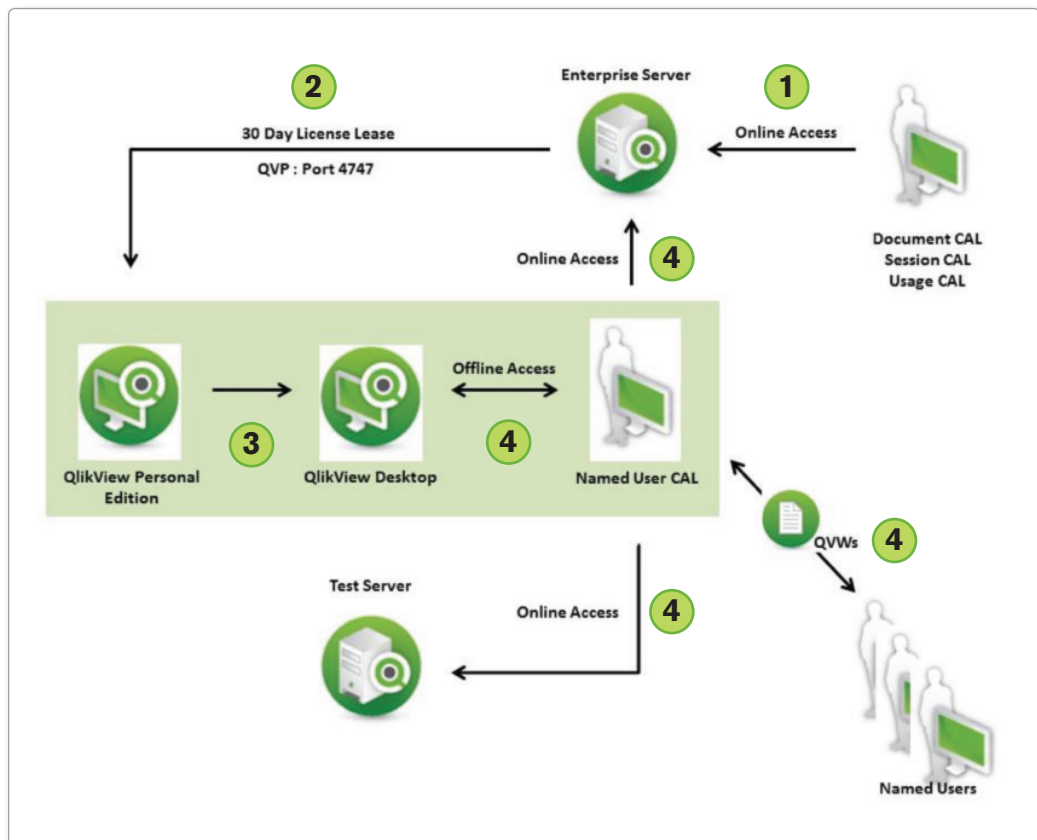
Named Users (Developers) can now connect to an Enterprise version of QVS to lease their local license giving them offline development capabilities for 30 days, after which they must connect again to renew their lease. A lease is prolonged for 30 days each time a user connects to the server.

A license lease can be obtained in one of two ways from a QlikView Enterprise or Small Business Server and only by those who have a Named User CAL:

1. Opening a QlikView application on the Server through the IE Plug-in*
2. Opening an application on the server through the 'Open in Server' in QlikView desktop*

A license lease is issued to QlikView Desktop via the QVP protocol on Port 4747. Both QlikView Desktop and the IE Plug-in communicate with the QlikView Server across this encrypted port. A license lease cannot be issued via the AJAX client which runs on port 80. A successful license lease will remove the restrictions of QlikView Personal Edition ensuring users can open applications developed by others.

Figure 1. QlikView License Lease Process



* "Allow license lease" must be enabled on the QlikView Server Management console.

License Types

License Lease is only available to those users who have obtained a Named User CAL as this license type facilitates both online & offline (QlikView Desktop) use. Document CALs, Session CALs & Usage CALs are all online licenses only meaning the user must be connected to the server to analyze their data.

QlikView Test Server

In most cases, customers choose to replicate the licenses they have in production to a test environment, utilizing the QlikView Test Server for this purpose. The QlikView Test Server does not permit license leasing because it accepts that the User has already leased a license from a QlikView Enterprise Edition Server and therefore does not require a second licensing server. A QlikView developer only requires a single licensing server to be given offline development capabilities removing the restriction of the Personal Edition. This does not prohibit them in any way from creating and posting QlikView applications to any number of additional servers.

Segregated Environments

In scenarios where the Developer is completely detached from the QlikView Enterprise Server and is therefore unable to obtain a license lease via port 4747, no other option exists other than to contact QlikTech who will issue Local License Keys that will need to be installed locally.

For non-server environments, Local Licenses Keys must be issued for development.

Server Types

License Lease is available on the following server editions:

- QlikView Enterprise Server
- QlikView Small Business Server

License Lease is unavailable on the following server editions:

- QlikView Test Server
- QlikView Extranet Server
- QlikView Information Access Server

Security Systems

The License Lease system has been based around a Windows User Account connecting to a QlikView Server with authentication and then opening an application. Options exist for implementing License Lease in non-Windows security environments, however this typically requires custom development and is outside the scope of this document.

Multiple License Leases

A single user can lease up to two licenses to two separate workstations within a 24 hour period. An attempt to lease a third license in a 24 hour period will be revoked if the same User ID is used. Additionally, the existing license lease of the third machine, should there be one previously existing, will be revoked in the case where the same User ID has leased a license from two other workstations in the previous 24 hour period. The third machine will however be able to lease a license after 24 hours have passed.

License Lease Period

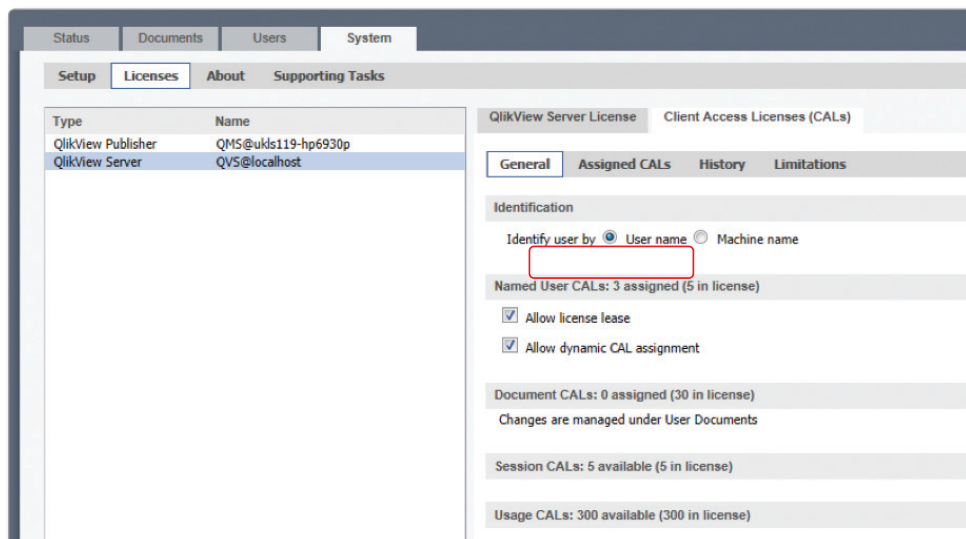
The period of a license lease is set at 30 days and this cannot be altered.

How to Lease a License

AUTOMATICALLY LEASING A LICENSE FROM THE SERVER

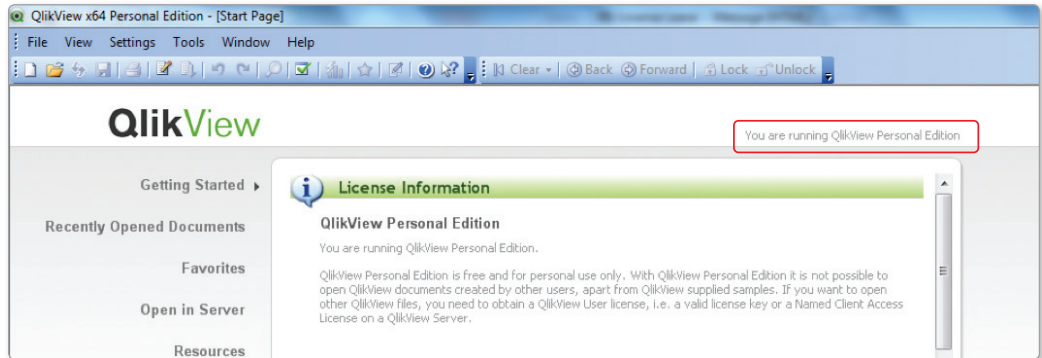
You must ensure that License Leasing is enabled from the Server Management Console and that the User has a Named CAL designated to them in the “Assigned CALs” tab or “Allow Dynamic CAL Assignment” is enabled with at least one unallocated Named CAL available.

Figure 2. “Allow license lease” option on QlikView Management Console



This is how an unlicensed version of QlikView (QlikView Personal Edition) appears prior to a license lease being obtained from the QlikView Server.

Figure 3. Unlicensed version of QlikView (QlikView Personal Edition)



Start QlikView Desktop and from the 'Settings' menu select 'User Preferences' followed by the 'Locations' tab. Highlight "QlikView Server Access Point (URL)" and press the 'Modify' button. Enter the Access Point URL and press 'OK'.

From the 'Tools' menu select 'Open QlikView AccessPoint'. When the QlikView Access Point displays showing available documents, click to open a document.

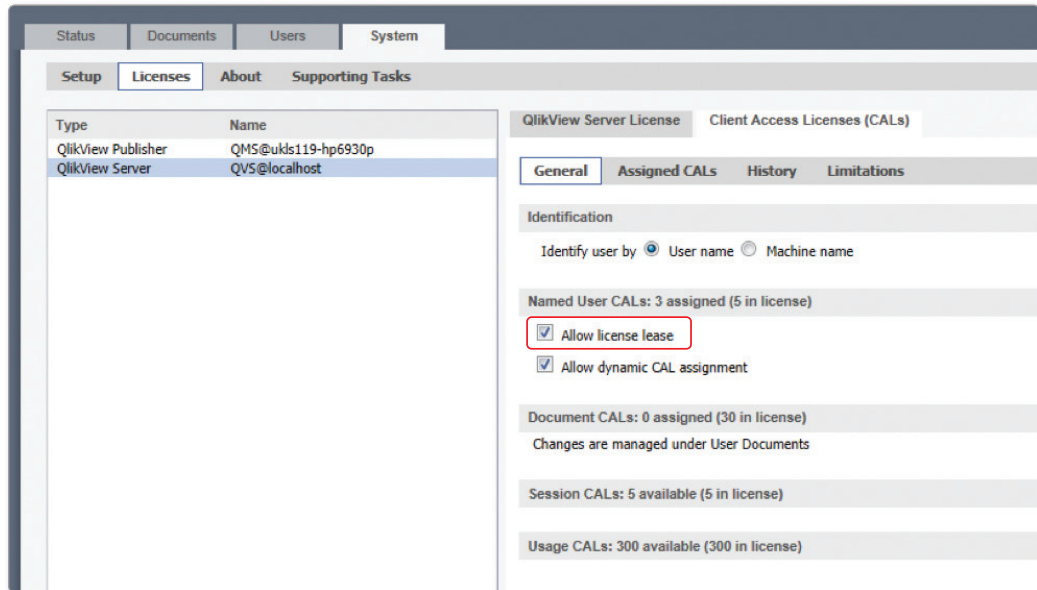
At this point, QlikView will lease a license from the server (if License Leasing is enabled on the Server) ensuring the copy of QlikView is fully licensed.

A Leased License will expire if it has not been updated for 30 days. Updating a Leased License is done automatically in the background, provided that QlikView can connect to a QlikView Server where you have a Named CAL. It can also be done manually by opening a file on the server, please see the next section.

MANUALLY LEASING A LICENSE FROM THE SERVER

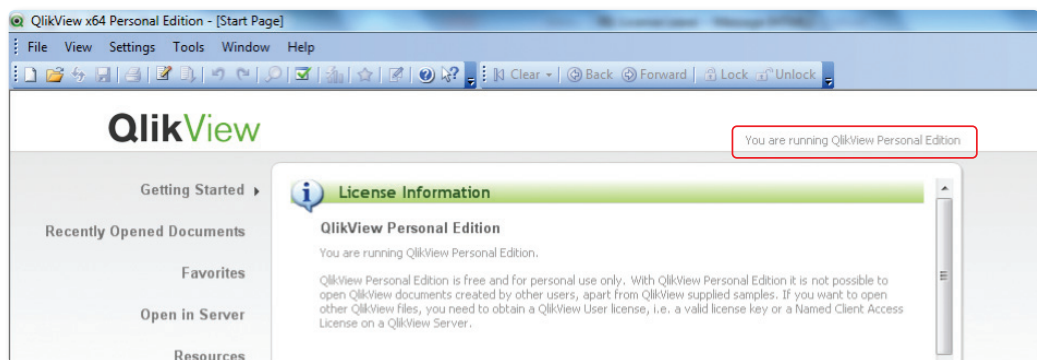
You must ensure that License Leasing is enabled from the Server Management Console and that the User has a Named CAL designated to them in the “Assigned CALs” tab or “Allow Dynamic CAL Assignment” is enabled with at least one unallocated Named CAL available.

Figure 4. “Allow license lease” option on QlikView Management Console



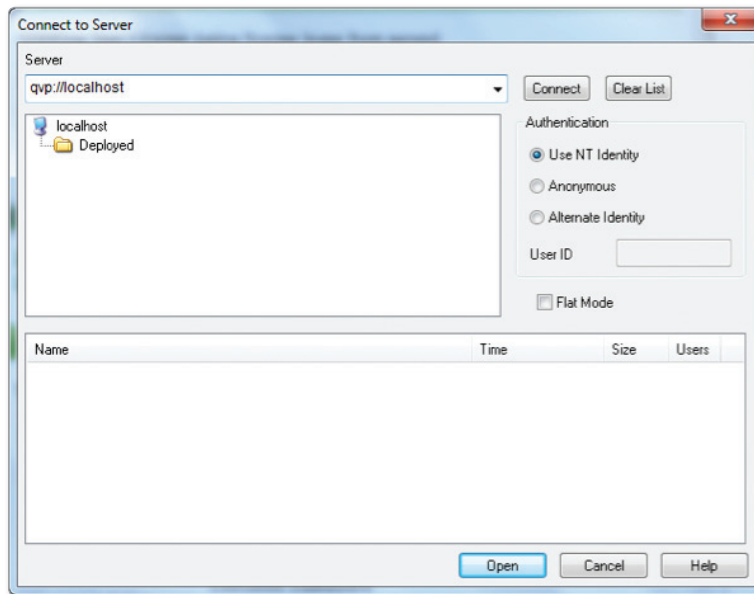
This is how an unlicensed version of QlikView (QlikView Personal Edition) appears prior to a license lease being obtained from the QlikView Server.

Figure 5. Unlicensed version of QlikView (QlikView Personal Edition)



To Lease a license, go to File > Open in Server... from the toolbar at the top.

Figure 6. Connect to Server wizard



Specify the server name and hit 'Connect'. This action will lease a license from the server. Hit the 'Cancel' button to return to the QlikView Start Page. A message will be displayed stating that you are leasing a license from the server.

Figure 7. Licensed version of QlikView

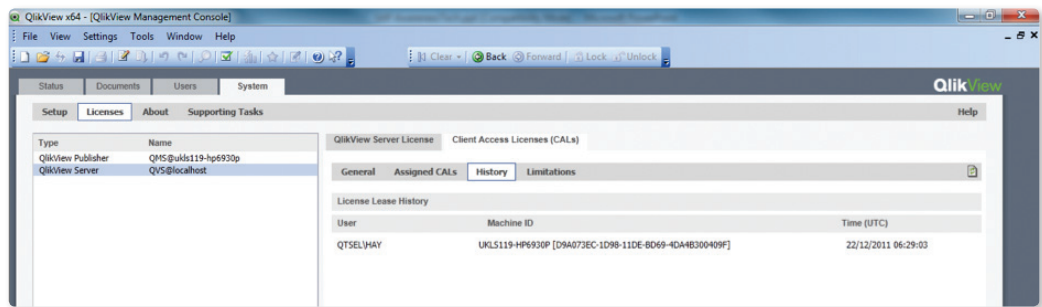


License Lease Expiry

The QlikView Server Management console records and displays when a lease was last issued to a user. From the management console, Go to the 'System' Tab and select 'Licences' from the sub menu. Highlight 'QlikView Server' and select the 'Client Access Licenses (CALs)' tab on the right followed by 'History' from the sub menu.

Here you will see a list of license leases for each user with a timestamp of when the lease was issued. Unless renewed, the License Lease will expire 30 after the stated time.

Figure 8. License lease history tab on QlikView management console



Removing a CAL

When a Named CAL is removed from a user via the management console, it will take 24 hours before the QVS clears the Named CAL, therefore switching Named User CALs between users is not instantaneous.