

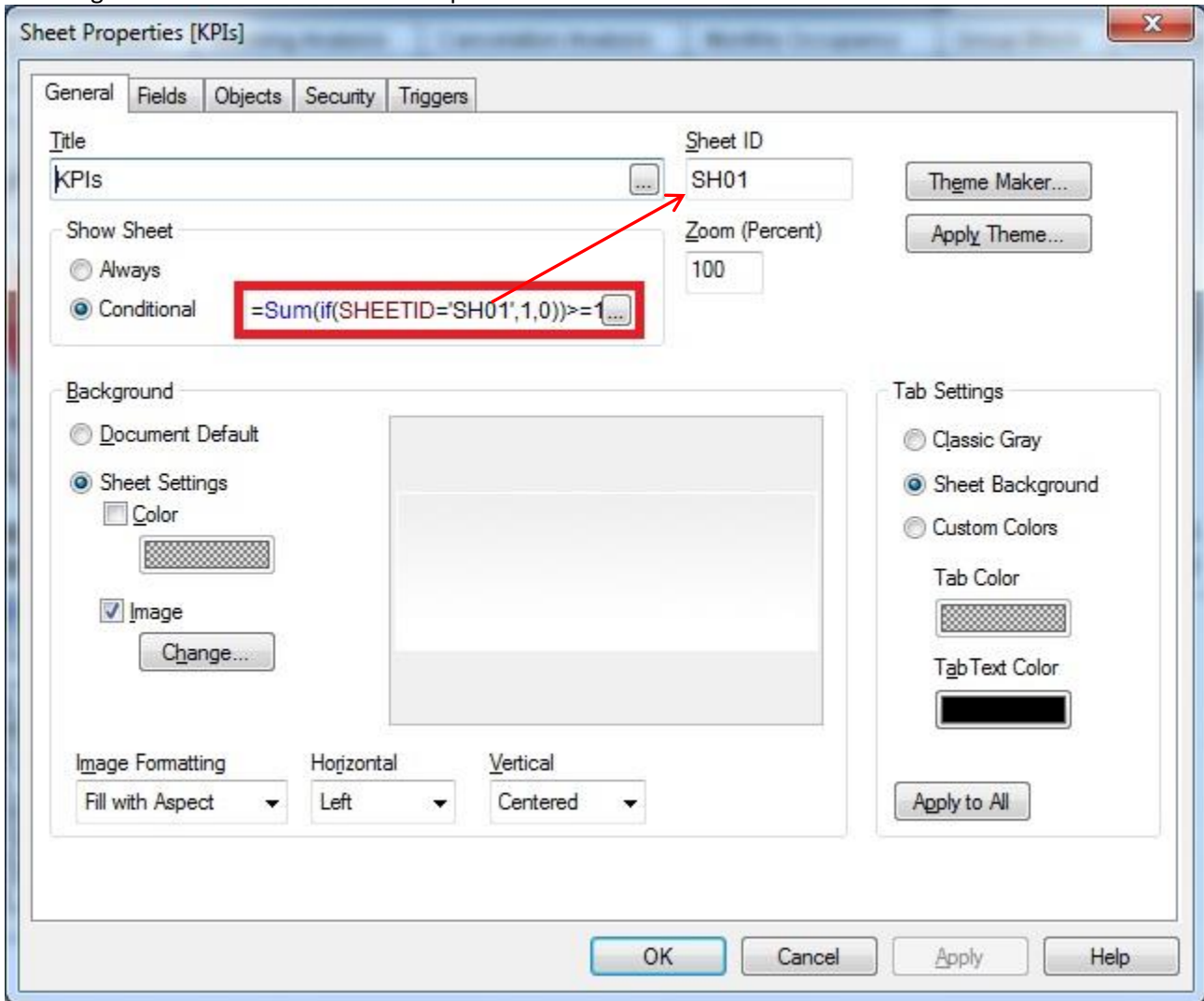
I. Create Section Access

```
SECTION ACCESS;  
LOAD * INLINE [  
  USERID, PASSWORD, ACCESS  
  ADMIN, 123, ADMIN  
  
  GM, 123, USER  
  USER1, 123, USER  
  USER2, 123, USER  
];
```

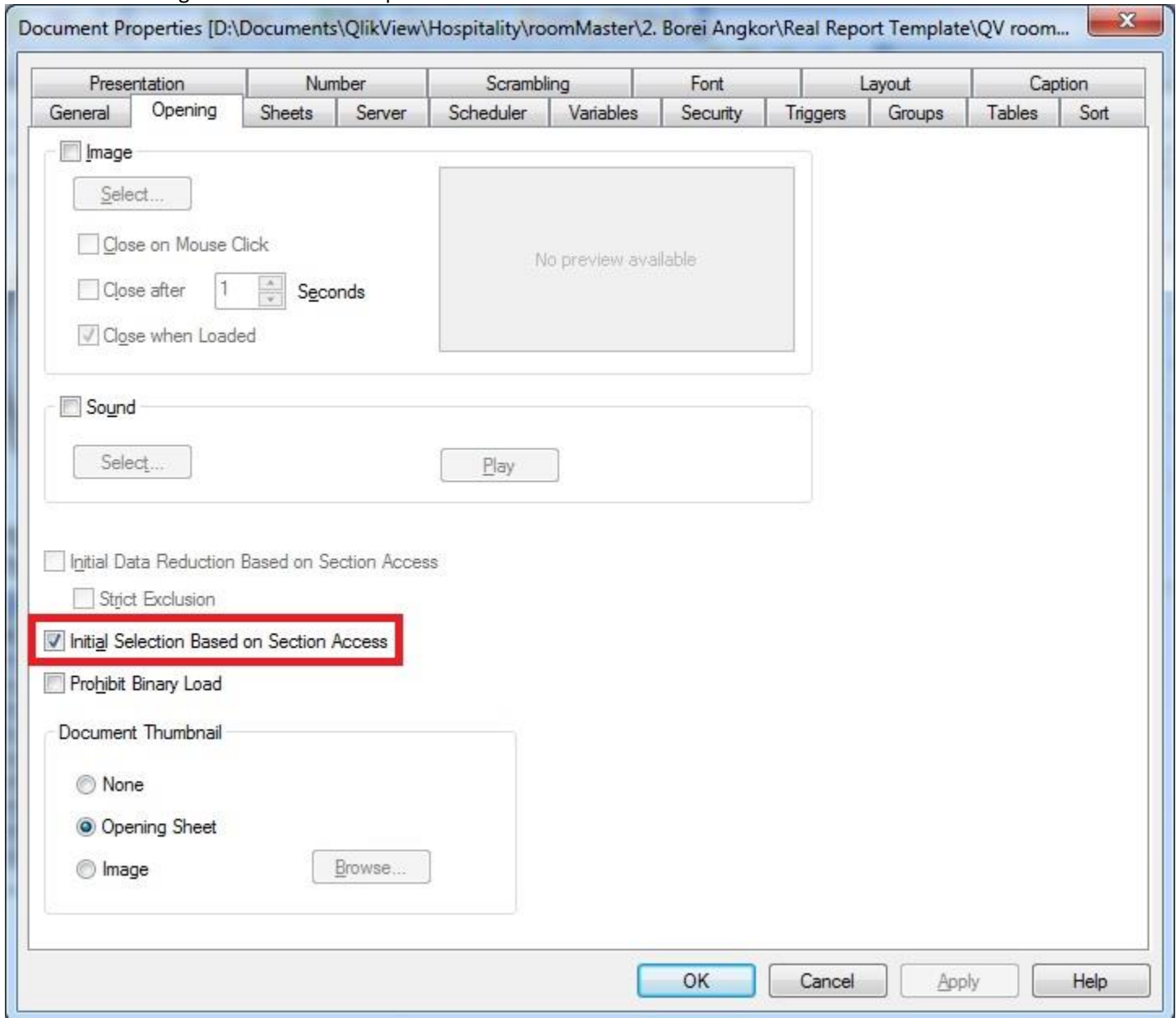
SECTION APPLICATION;

```
LOAD * INLINE [  
  USERID, SHEETID  
  USER1, SH01  
  USER1, SH02  
  USER1, SH03  
  USER1, SH04  
  
  USER2, SH05  
  USER2, SH06  
  USER2, SH07  
  USER2, SH08  
  
  ADMIN, SH01  
  ADMIN, SH02  
  ADMIN, SH03  
  ADMIN, SH04  
  ADMIN, SH05  
  ADMIN, SH06  
  ADMIN, SH07  
  ADMIN, SH08  
  
  GM, SH01  
  GM, SH02  
  GM, SH03  
  GM, SH04  
  GM, SH05  
  GM, SH06  
  GM, SH07  
  GM, SH08  
];
```

II. Right Click on Sheet ==> Sheet Properties



### III. Settings ==> Document Properties





- Presentation
- Number
- Scrambling
- Font
- Layout
- Caption
- General
- Opening
- Sheets
- Server
- Scheduler
- Variables
- Security
- Triggers
- Groups
- Tables
- Sort

User Privileges

- Reduce Data
- Add Sheets
- Edit Script
- Reload
- Partial Reload
- Edit Module
- Save Document (Users)
- Access Document Properties (Users)
- Promote/Demote Sheets
- Allow Export
- Allow Print (When Export Is Prohibited)
- Access Tabrow Properties
- Macro Override Security
- Show All Sheets and Objects
- Show Progress for Hidden Script
- Allow User Reload
- Admin Override Security

Module Password...

OK

Cancel

Apply

Help



- Presentation
- Number
- Scrambling
- Font
- Layout
- Caption
- General
- Opening
- Sheets
- Server
- Scheduler
- Variables
- Security
- Triggers
- Groups
- Tables
- Sort

Document Event Triggers

- OnAnySelect
- OnOpen<Has Action(s)>**
- OnPostReduceData
- OnPostReload

Edit Action(s)...

Field Event Triggers

- A-Action**
- A-AmendBy
- A-ChangeOn
- A-ConfNo
- A-DateStamp
- A-FieldNo
- A-File
- A-NewVal

OnSelect

Add Action(s)...

OnChange

Add Action(s)...

OnLock

Add Action(s)...

OnUnlock

Add Action(s)...

Variable Event Triggers

- [Empty]**
- vAuditDate
- vEndDate
- vStartDate
- vTotalCancel
- vTotalDay

OnInput

Add Action(s)...

OnChange

Add Action(s)...

OK

Cancel

Apply

Help

