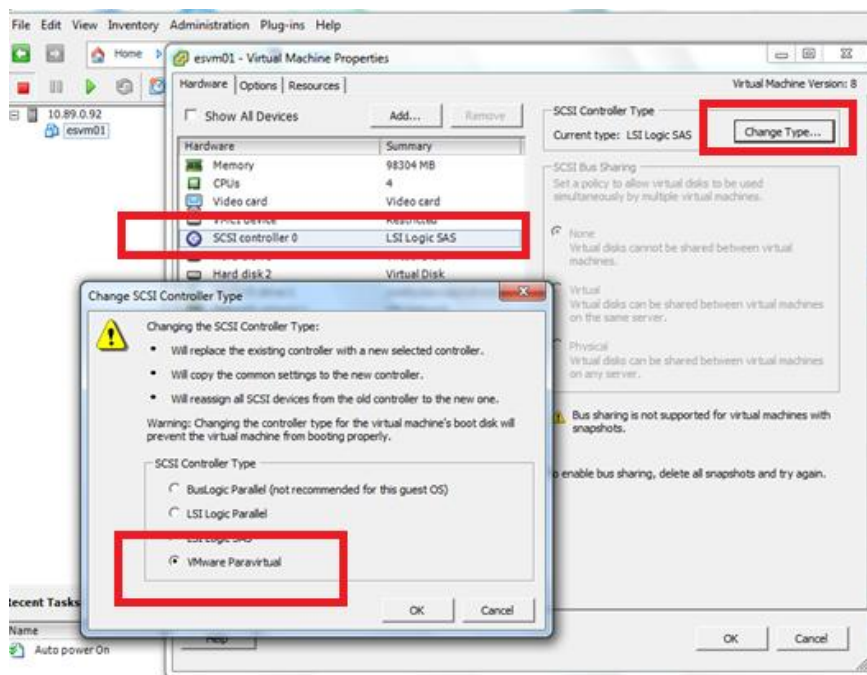


QlikView in Virtual Environments

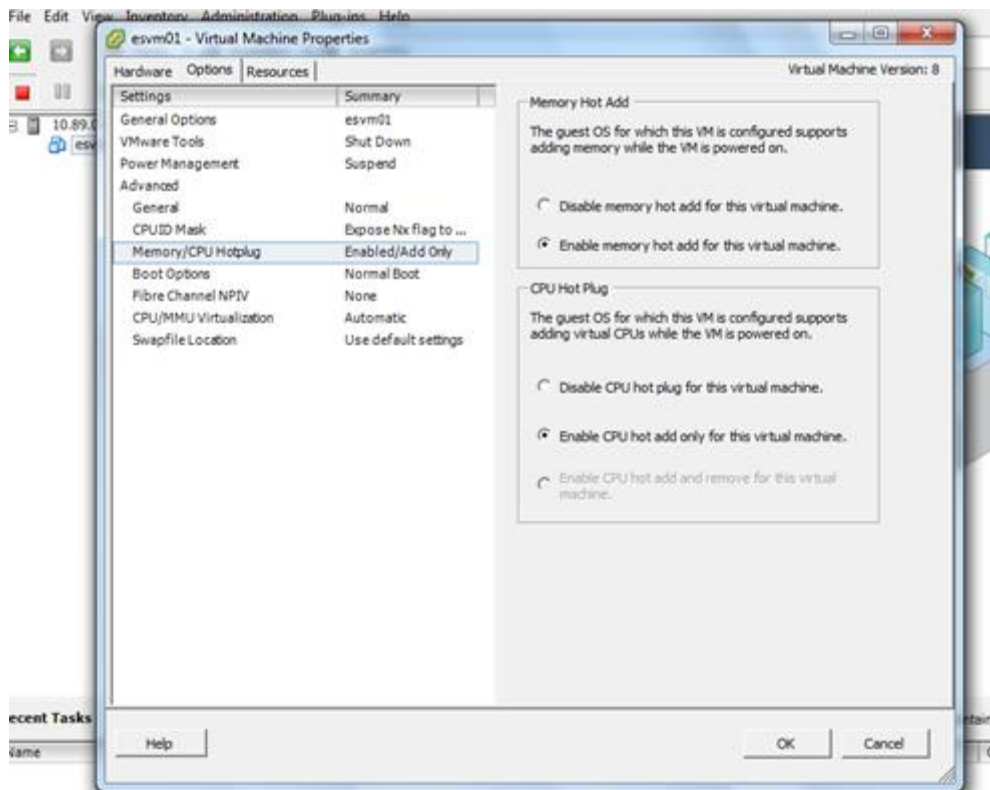
Recommendation is valid for VMware 5.1

First of all, to get the most out of your VMware host and machines for QlikView, make sure to dedicate all resource for QlikView. Since QlikView is consuming a lot's of CPU, Memory, Disk and in some way Network depending on the complicity of the QlikView setup. If VMware is not configured with dedicated resource for QlikView it will suffer performance, a lot.

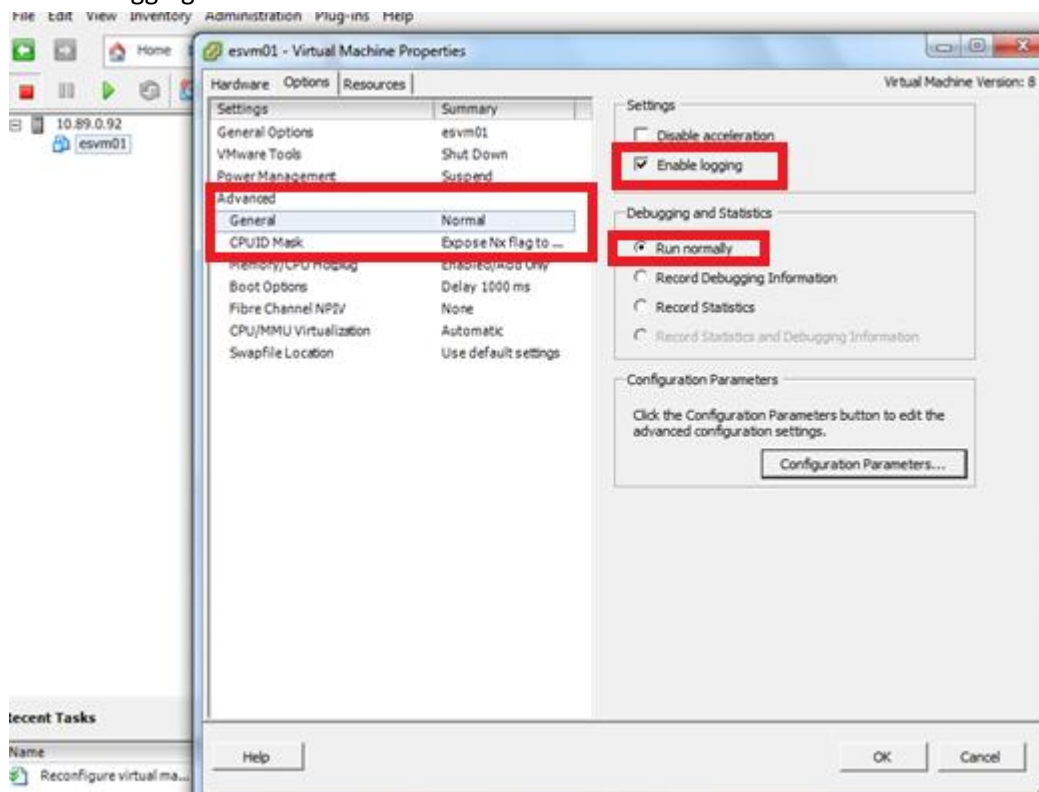
- SCSI recommendation, to gain better performance for disk I/O



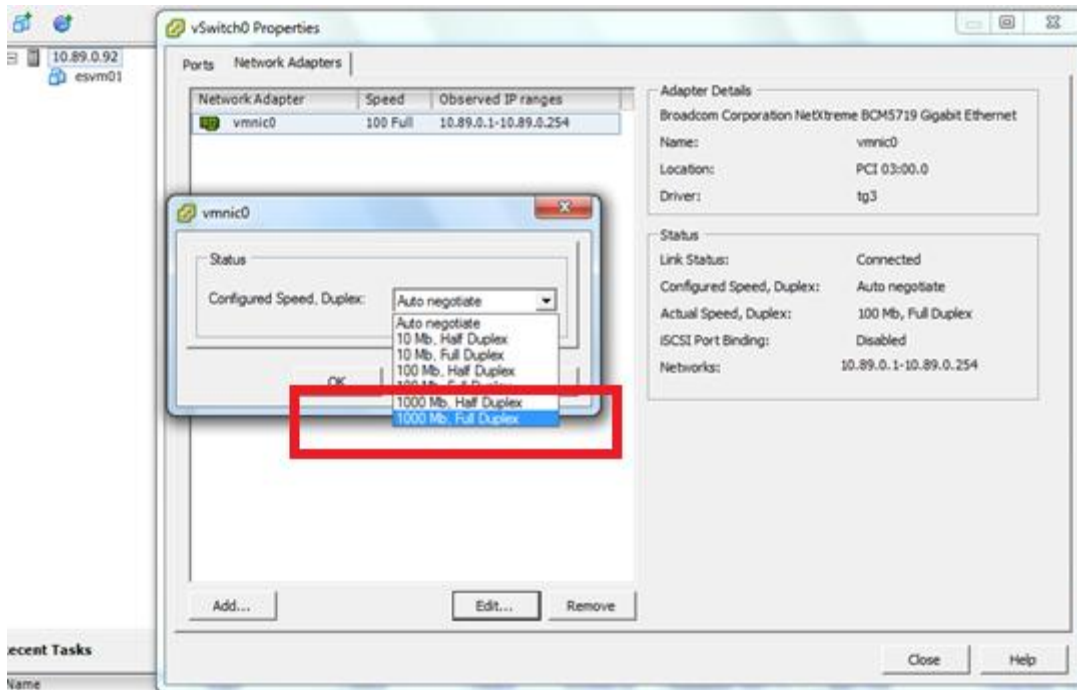
- There might be instances when an application running on a virtual machine starts consuming a lot of resources and, as a result, the VM starts running out of RAM and CPU. If the application is mission critical and has to be highly available, you can't just shut it down to add more RAM and CPU. These are the kind of instances when a Hot-Add and Hot-Plug feature can come in handy.



- Turn on logging



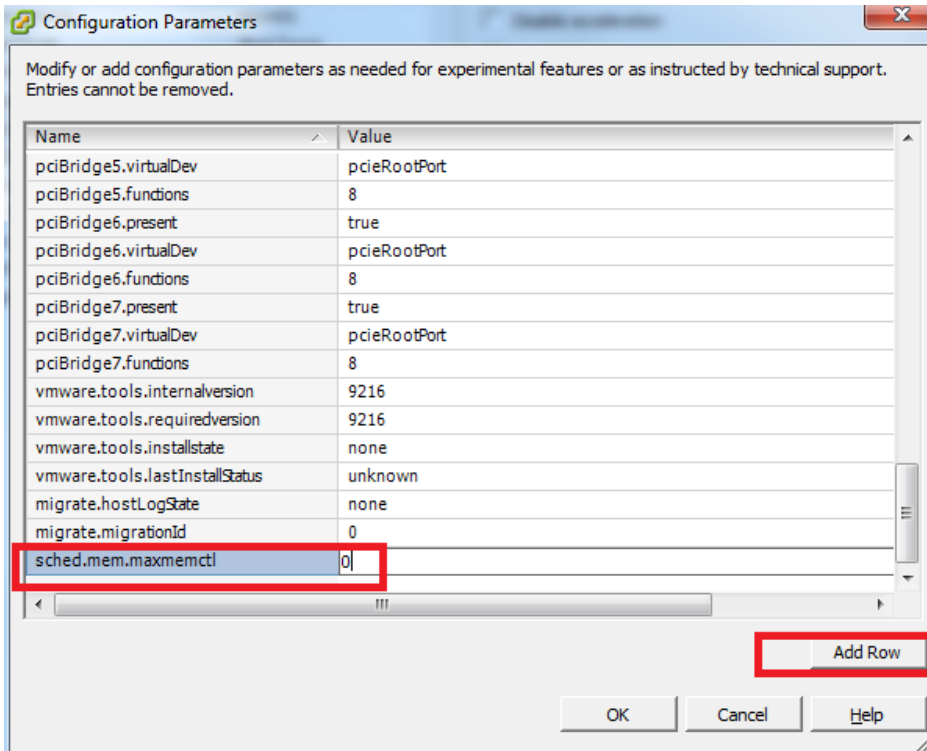
- Configure Network Adapter correct
1000 Mb Full Duplex
Also, make sure to use VMware network driver and not windows.



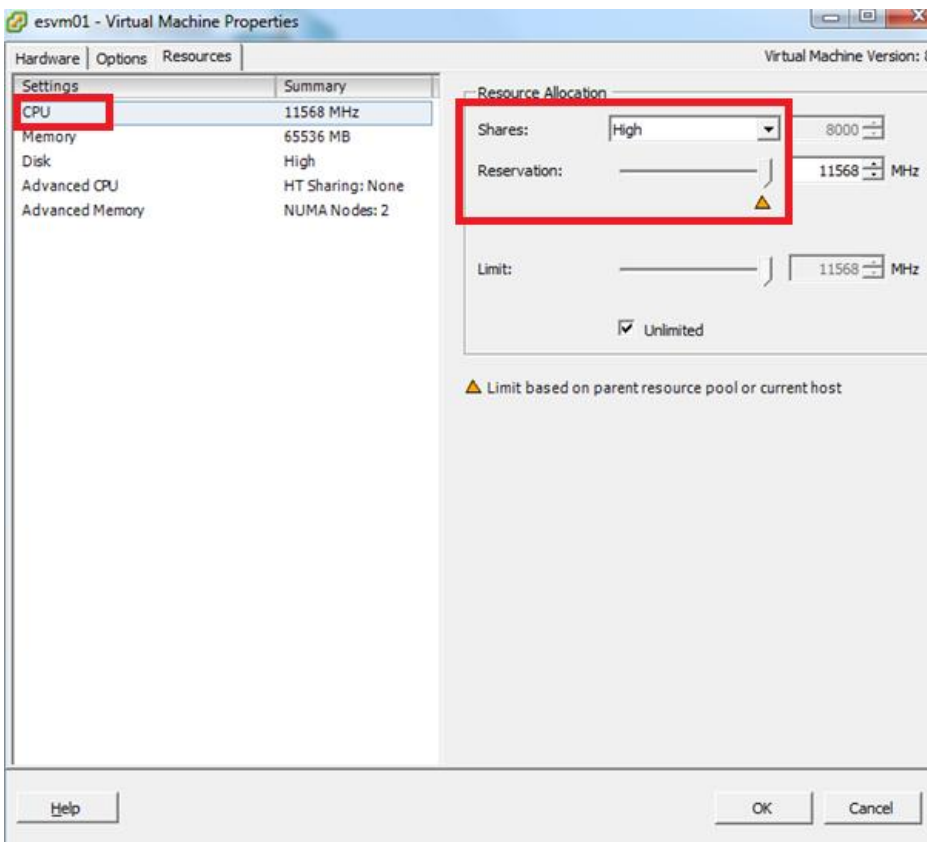
- Disabled ballooning when running application with much workloads

http://kb.vmware.com/selfservice/microsites/search.do?language=en_US&cmd=displayKC&externalId=1002586

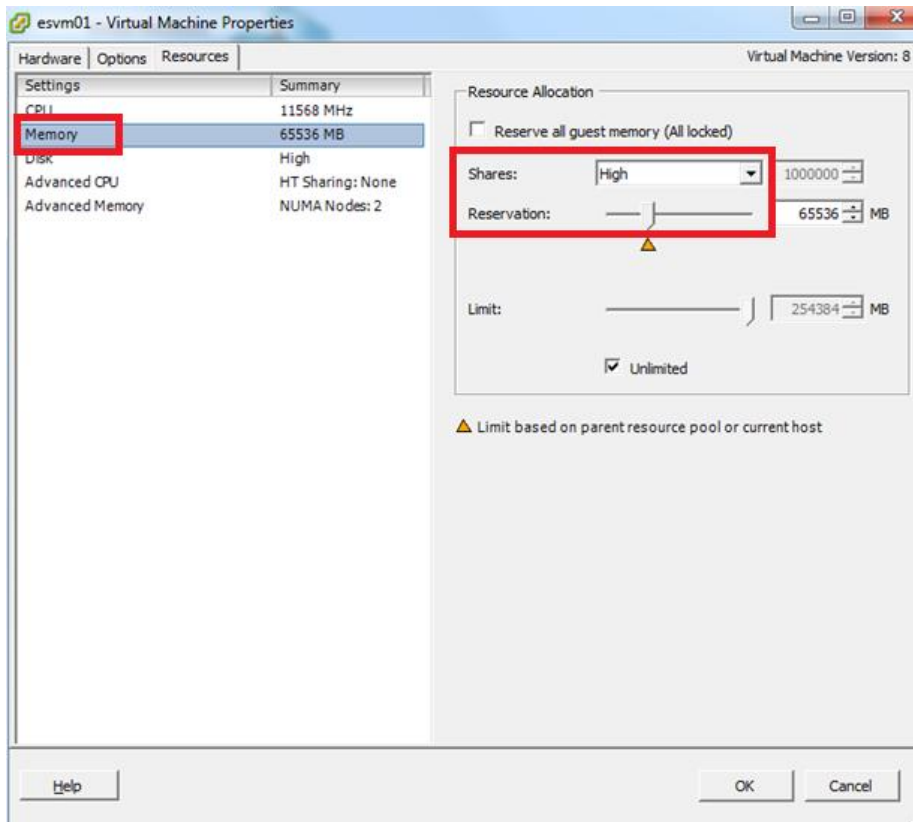
<http://blogs.vmware.com/vsphere/2012/02/disable-ballooning.html>



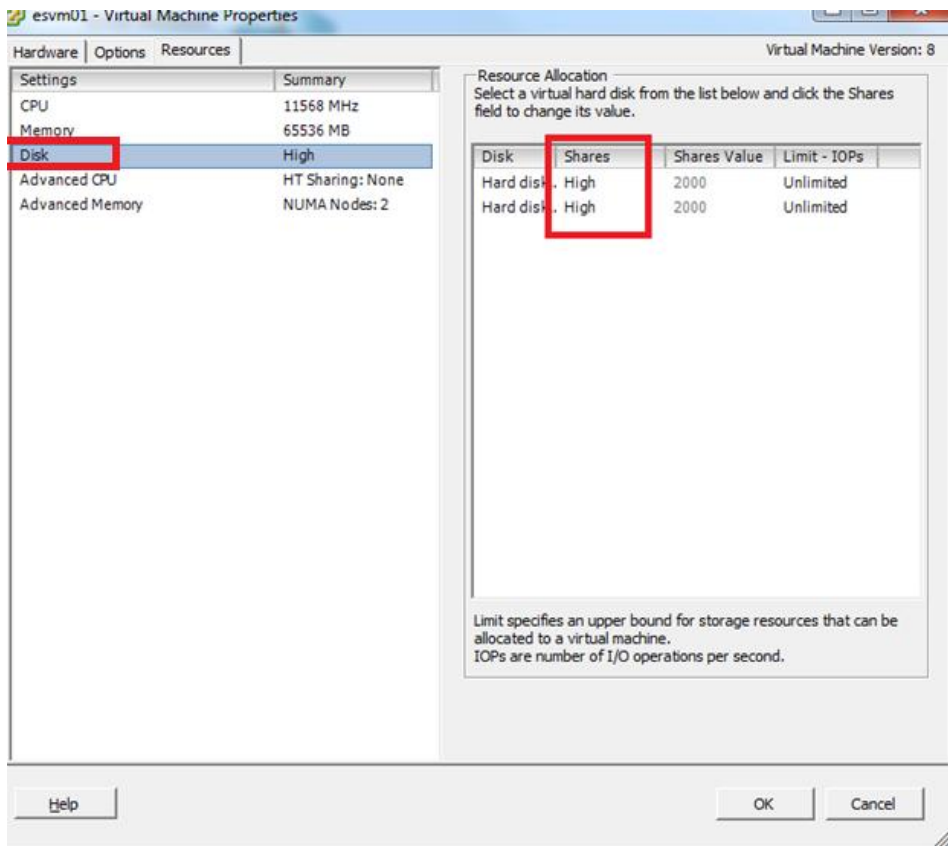
- Dedicate CPU Recourse Allocation



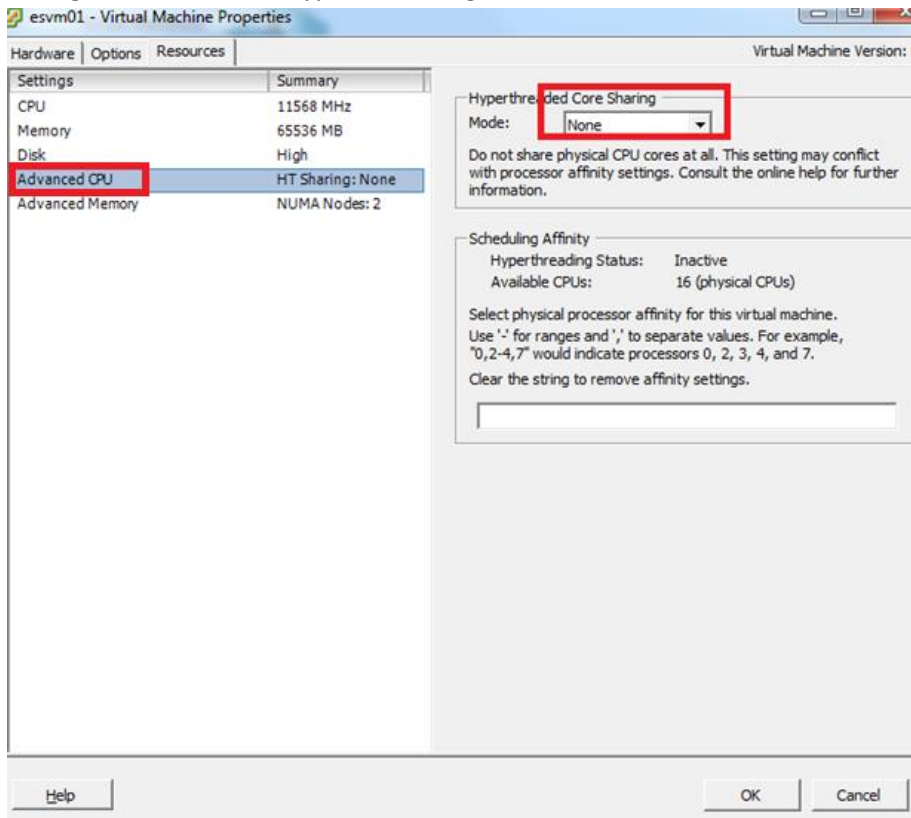
- Dedicate Memory Recourse Allocation



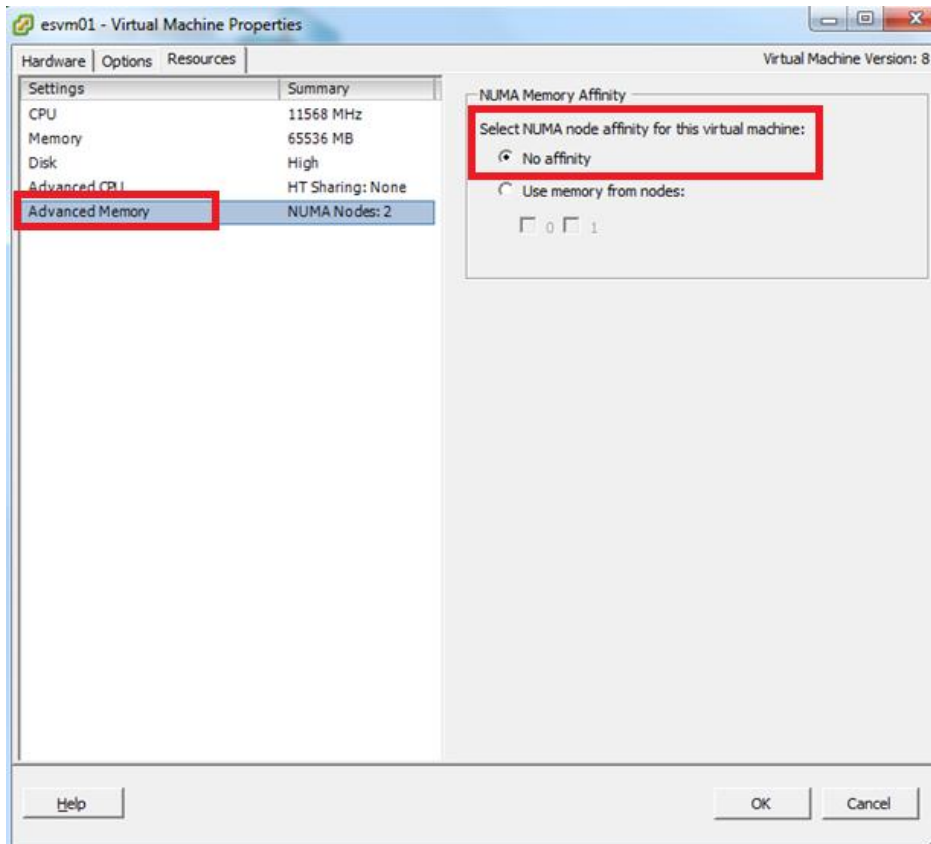
- Dedicate Disk Recourse Allocation



- Change Advanced CPU Hyper threading > set to None



- Configure Advanced Memory and select No affinity



- Disable any Virus Scanner inside the VM
- Defrag the Virtual Disks and the physical disk
- If needed, dedicate Network for you QlikView machine. If QlikView is dependent on a file server over the network.

