

Author	Jean Biangue Tinda (jbg@qlikview.com)	Last Modified	2010-10-11
Theme	Installation and Upgrade to Qlikview 10	Classification	Support

<b>Target Audience</b>
Support employees, Pre sales and Consulting

<b>Application Overview</b>
<p>This guide helps the Support, Pre sales and Consulting Teams to install or upgrade to Qlikview V10.</p> <hr/>
<p><b>Content table</b></p> <ul style="list-style-type: none"><li>1- Install Qlikview 10<ul style="list-style-type: none"><li>1-1 Requirements</li><li>1-2 Install Qlikview 10 Stand Alone</li><li>1-3 Install Qlikview 10 Server / Publisher</li></ul></li><li>2- Upgrade to Qlikview 10<ul style="list-style-type: none"><li>2-1 Migration considerations</li><li>2-2 Cross-release compatibility</li><li>2-3 Upgrade to Qlikview Server / Publisher 10</li></ul></li><li>3- What is new in Qlikview 10?<ul style="list-style-type: none"><li>3-1 Stand Alone</li><li>3-2 Server / Publisher</li></ul></li></ul>

## 1 - Install Qlikview v10

### 1-1 System Requirements Qlikview 10: Stand Alone

#### *Hardware*

- Pentium II processor or higher. (Pentium<sup>®</sup>4 or better recommended.)  
QlikView makes full use of modern multi-core processor architecture and we thus strongly recommend using such processors.
- Graphics hardware supporting color XGA resolution or better.
- A monitor with a resolution of at least 1024 x 768.
- A mouse or an equivalent pointing device supported by MS Windows.
- A CD-ROM drive (if installation is to be made from CD).
- A hard disk with at least 150 MB of free disk space.
- Enough primary memory: 1 GB for 32-bit Windows and 4 GB for 64-bit

#### *Operating System*

You need one of the following operating systems:

- 1 GHz (**x86** processor) or 1.4 GHz (**x64** processor). 2 GHz or faster, with several cores/processors recommended.
- QlikView Server will use the color settings of the Windows server where it runs when sending charts and other graphics to the client. For best results, the color palette on the Windows server should be set to at least 65,536 colors (16 bit).
- A mouse or an equivalent pointing device supported by Microsoft Windows.
- (optional) a DVD drive for DVD-based install media only.
- A hard disk with at least **450 MB** of free disk space.
- **1 GB RAM** minimum on **x86** systems and **4GB** minimum on **X64** systems. The server's capacity to publish QlikView documents and the number of users who concurrently can connect to it are strongly related to the amount of RAM available.
- An **http server** for providing AJAX ZFC solutions to end users (e.g. MS Internet Information Services (IIS) or the built-in QVWebServer). Microsoft IIS or the built-in web server is required when using tunneling, external authentication or NT security with the AJAX Zero-Footprint client.
- TCP/IP Network.
- **Microsoft .NET 3.5 SP1** or greater

Actual requirements will vary, based on system configurations. It is recommended that you work with your local QlikView representative to configure an appropriate hardware platform for your QlikView Server/Publisher requirements.

- Microsoft **Internet Explorer 7** and later, **Firefox 3** or **Google Chrome** to use QlikView Management Console.
- Microsoft® Windows Server 2003™; or
- Microsoft® Windows XP™ or
- Windows Vista;

Additional Requirements for QlikView x64

- Processor supporting the x64 architecture
- 4 GB RAM
- Windows XP Professional x64 Edition™; or
- Windows Server 2003 x64 Edition™

## 1-1 System Requirements Qlikview 10: Server / Publisher

### *Hardware and Software x86 / x64*

#### *Supported Operating Systems*

- **Microsoft® Windows Server 2003™ including x64 Edition**
- **Microsoft® Windows Server 2008™ including x64 Edition**
- Microsoft® Windows XP™ including x64 Edition\*
- Microsoft® Windows Vista™ including x64 Edition\*
- Microsoft® Windows 7 including x64 Edition\*

*\*Recommended for development and testing purposes only.*

#### *Client requirements for plug-in (QVA for IE)*

In addition to the server requirements above, the client must be running a compatible web browser.

Client requirements are as follows:

- Microsoft Internet Explorer 6™ or higher
- Microsoft® Windows Server 2003™
- Microsoft® Windows Server 2008™
- Microsoft® Windows XP™
- Microsoft® Windows Vista™
- Microsoft® Windows 7™

# QlikView V10 Installation



## ***Client requirements for AJAX Zero-Footprint Clients***

In addition to the server requirements above, the client must be running a compatible web browser. Client requirements are as follows:

- Under MS Windows:
  - Microsoft Internet Explorer 7 or later
  - Firefox 2 or 3, Safari 3, Google Chrome 1
- Under Linux (tested on Ubuntu Linux only):
  - Netscape Navigator 7.2 or later
  - Firefox 1.0.6 or later
- Under Mac OS X (tested on v. 10.4 "Tiger" only):
  - Netscape Navigator 7.2 or later
  - Firefox 2 or 3, Safari 3

## ***IIS configuration requirements***

- ASP.NET (Including dependencies)
- Windows Authentication

## 1-2 Install Qlikview v10 Stand Alone

Download the Installation file from downloads page of Qliktech at <http://global.qlikview.com/download/>.

Welcome to the QlikView Download site. Select a language and click "Download Now" below.

Clear Selections << Back Fwd >>

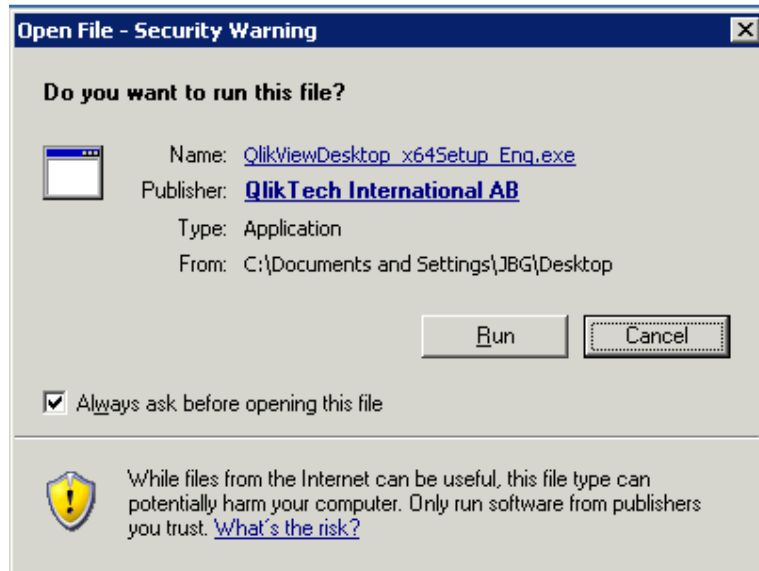
<b>File Function?</b> <input checked="" type="checkbox"/> Installation program <input type="checkbox"/> Release notes <input type="checkbox"/> Documentation <input type="checkbox"/> QlikView Examples <input type="checkbox"/> SAP Transports <input type="checkbox"/> Mobile client <input type="checkbox"/> Misc	<b>Which Product?</b> <input checked="" type="checkbox"/> QlikView Desktop <input type="checkbox"/> QlikView Server <input type="checkbox"/> QlikView Publisher <input type="checkbox"/> QlikView Connector for use with SAP NetWeaver(R) <input type="checkbox"/> QlikView Workbench <input type="checkbox"/> QlikView web parts for Microsoft SharePoint(R) <input type="checkbox"/> QlikView IE Plug-in <input type="checkbox"/> QlikView OCX <input type="checkbox"/> QlikView PDF Writer <input type="checkbox"/> QlikView Java Mobile <input type="checkbox"/> QlikView Salesforce Connector	<b>Which Version?</b> <input checked="" type="checkbox"/> 10.00 <input type="checkbox"/> 9.00 <input type="checkbox"/> 8.50 <input type="checkbox"/> 8.20 <input type="checkbox"/> 8.01 <input type="checkbox"/> 7.52 <input type="checkbox"/> 6.06 <input type="checkbox"/> 5.50 <input type="checkbox"/> 5.40 <input type="checkbox"/> 5.30 <input type="checkbox"/> 5.20 <input type="checkbox"/> 5.05 <input type="checkbox"/> 5.00 <input type="checkbox"/> 4.00 <input type="checkbox"/> 3.00 <input type="checkbox"/> 1.50	<b>Preferred Language</b> <input type="checkbox"/> Chinese (中国) <input type="checkbox"/> Dutch (Nederlands) <input checked="" type="checkbox"/> English <input type="checkbox"/> French (Français) <input type="checkbox"/> German (Deutsch) <input type="checkbox"/> Italian (Italiano) <input type="checkbox"/> Japanese (日本語) <input type="checkbox"/> Portuguese (Português) <input type="checkbox"/> Spanish (Español) <input type="checkbox"/> Swedish (Svenska)  <b>Operating System</b> <input type="checkbox"/> Windows x86 (32bit) <input checked="" type="checkbox"/> Windows x64 (64bit) <input type="checkbox"/> Java Mobile	<b>Release Stage</b> <input type="checkbox"/> Public release (GA)  <b>Release Number</b> <input type="checkbox"/> Initial Release <input type="checkbox"/> SR1 <input type="checkbox"/> SR2 <input type="checkbox"/> SR3 <input type="checkbox"/> SR4 <input type="checkbox"/> SR5 <input type="checkbox"/> SR6
---	---	---	--	---

Select Bookmark

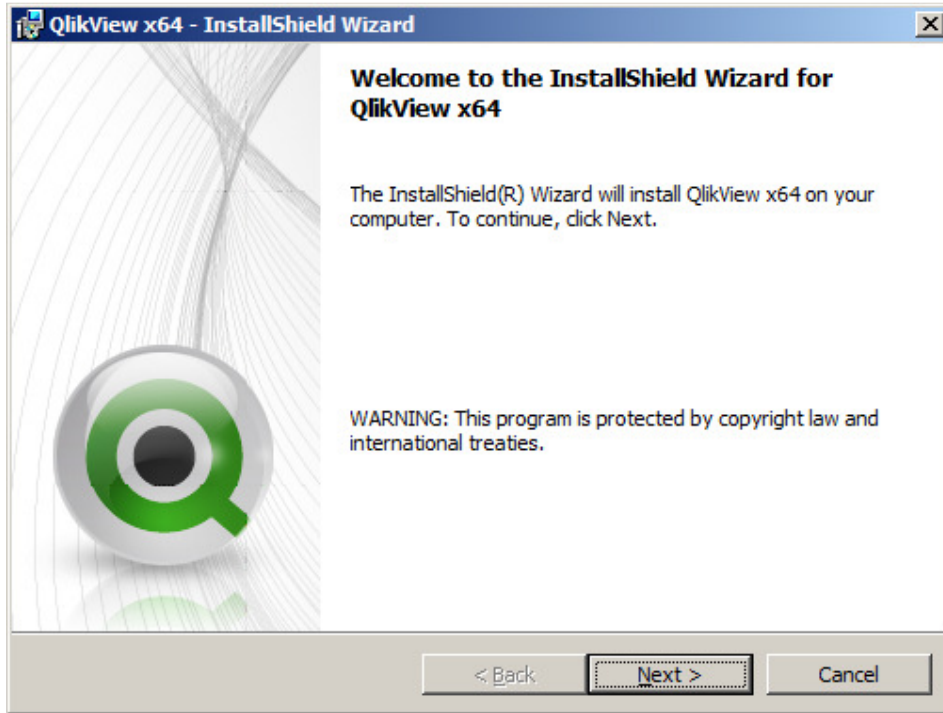
Download	File Name	Version No	Release Stage	Release Number	Build	Operating System	Language	Component	File Type	Last Modified
<a href="#">Download</a>	QlikViewDesktop_x64Setup_Eng...	10.00	Public release (GA)	Initial Release	08715	Windows x64 (64bit)	English	QlikView Desktop	Executable	2010-10-14
<a href="#">Download</a>	QlikViewTutorial_x64Setup.exe	10.00	Public release (GA)	Initial Release	08715	Windows x64 (64bit)	English	QlikView Desktop	Executable	2010-10-14

Download the executable file you want to install after checking the right file function, Product, Version, Language, Operating system and if needed release number. Save the file temporarily on your disk and launch the installation with a double click on the executable file. The following dialog will appear.

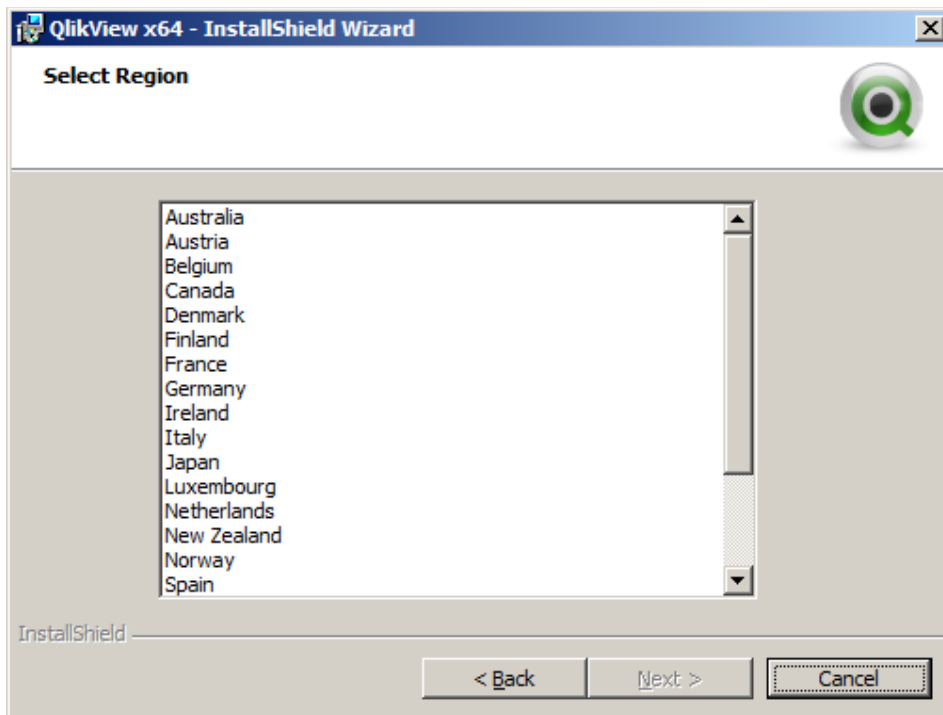
# QlikView V10 Installation



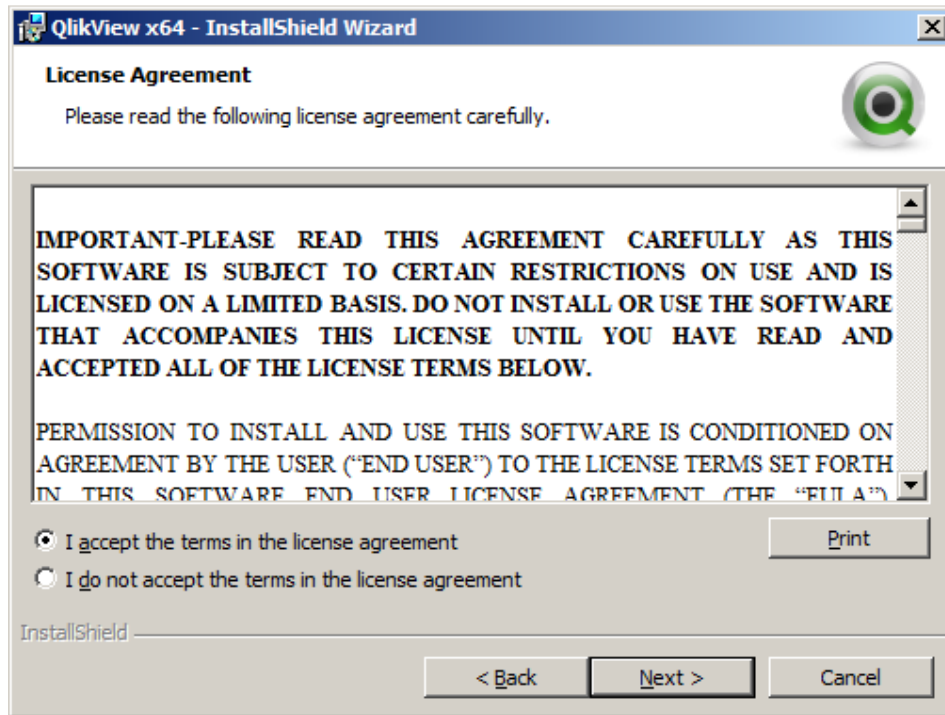
Click on **run** to start the installation. Qlikview setup will extract the installation files on your disk and go to the following dialog.



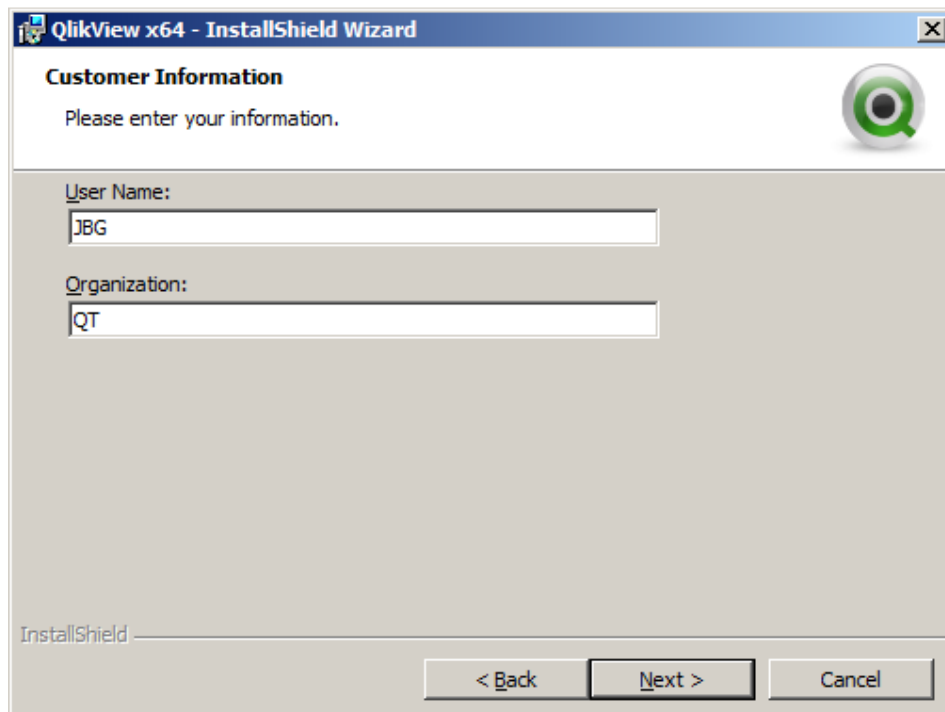
Click **Next** to launch the InstallShield Wizard.



Set your region and click **Next**.

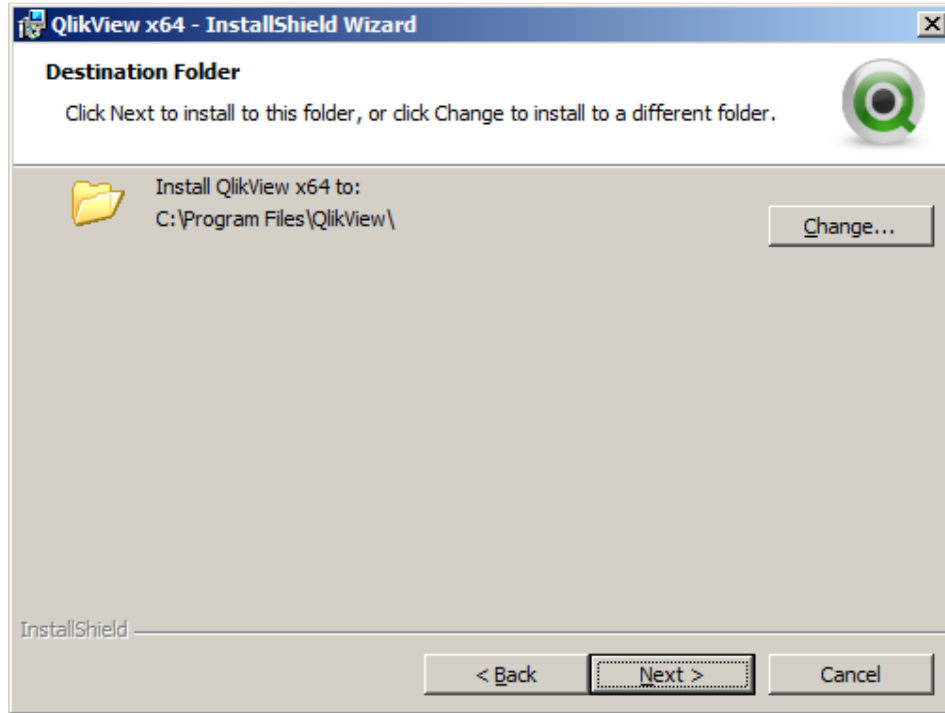


Read the License Agreement and accept the terms. If necessary, print the license agreement. Click **Next**.

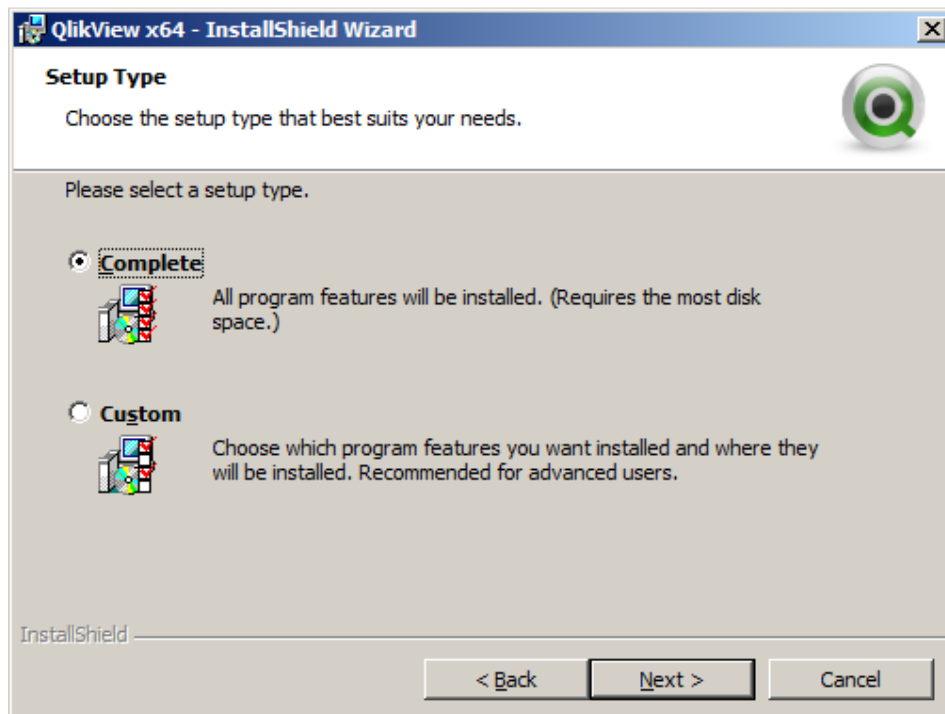


Enter your username and the name of your organization. Click **Next**.

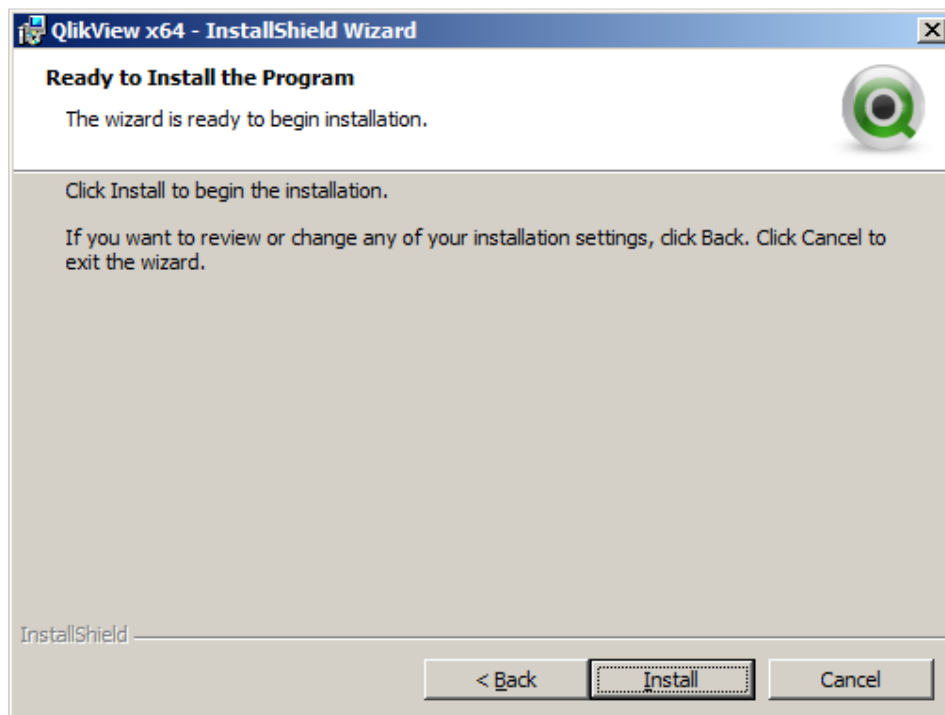
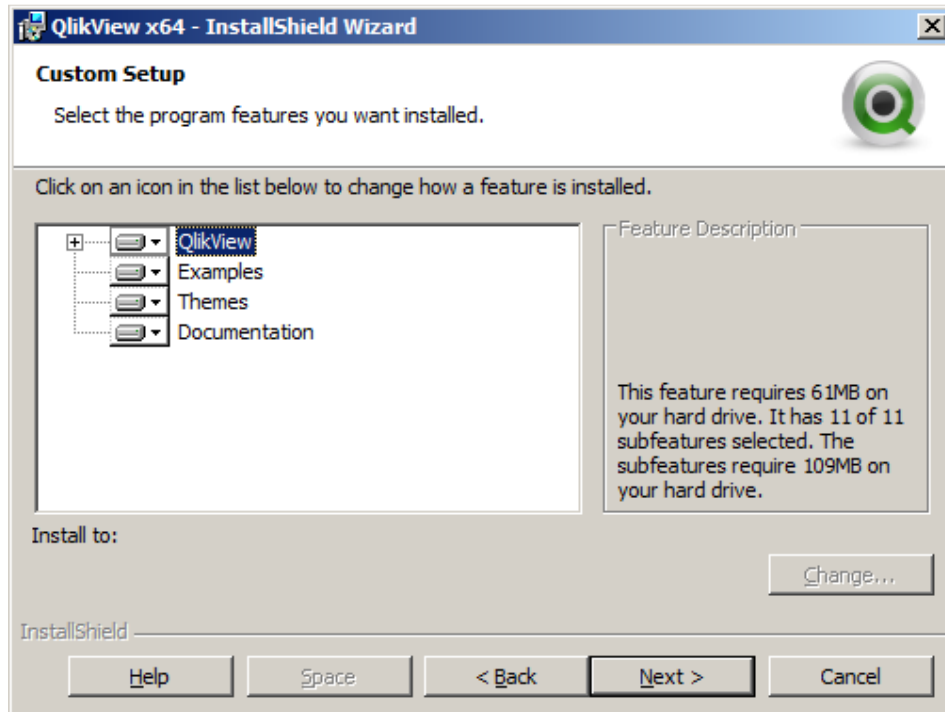




If you want to install Qlikview on a different folder press change to select the desired folder, otherwise click Next

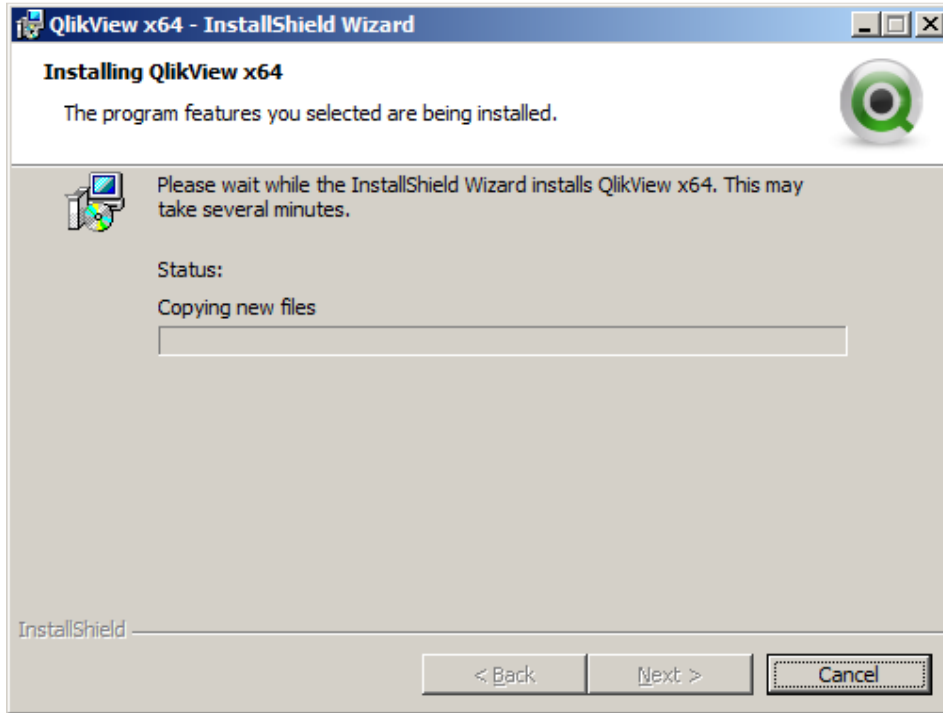


The wizard will let you choose between **Complete** and **Custom** installation. Choosing **Custom** will give you the possibility to check the options manually like you can see it on the picture below. If you want a **complete** installation, check **Complete** and click **Next**.

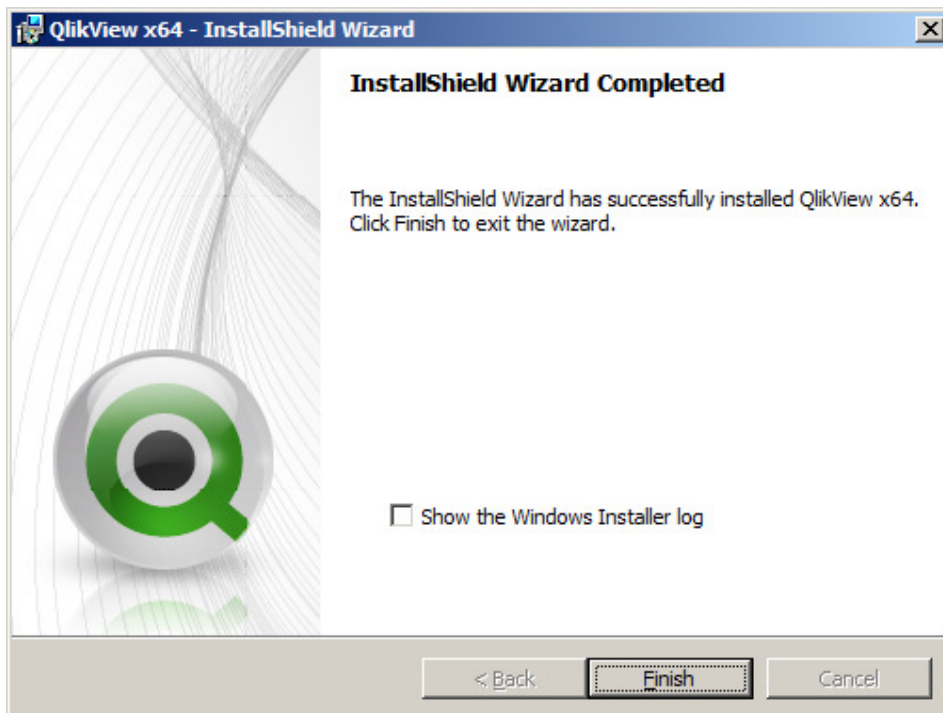


After choosing the **complete** installation option, the Wizard will now install Qlikview 10 on your computer. Click **Install**.

# QlikView V10 Installation



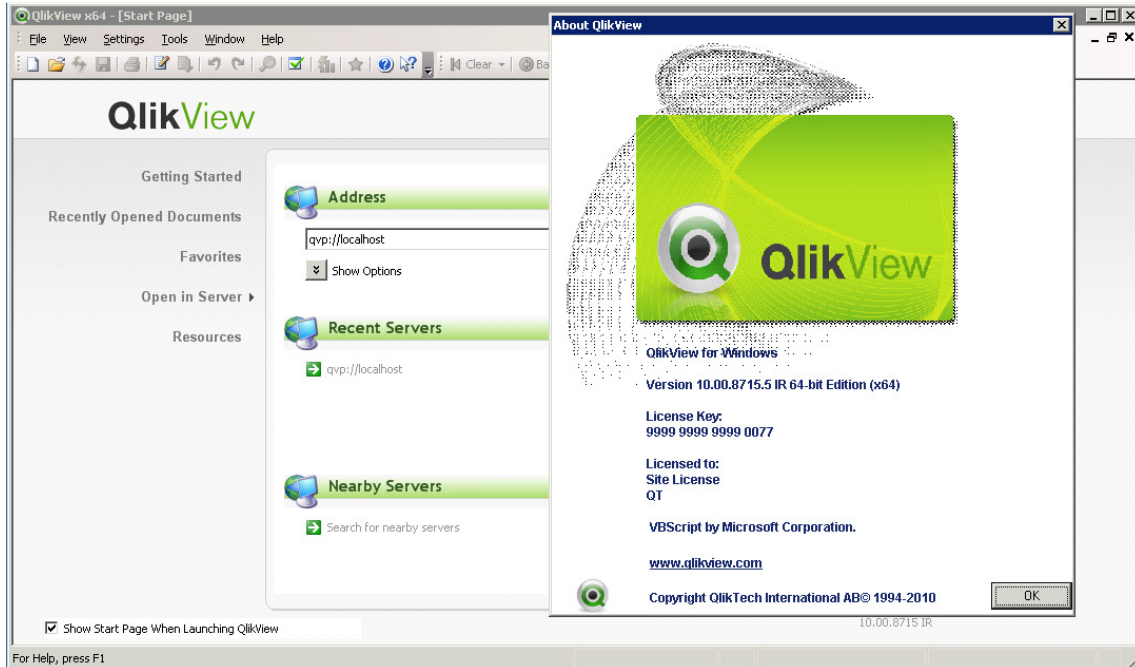
Qlikview 10 is being installed on your computer. You can cancel the Installation if needed.



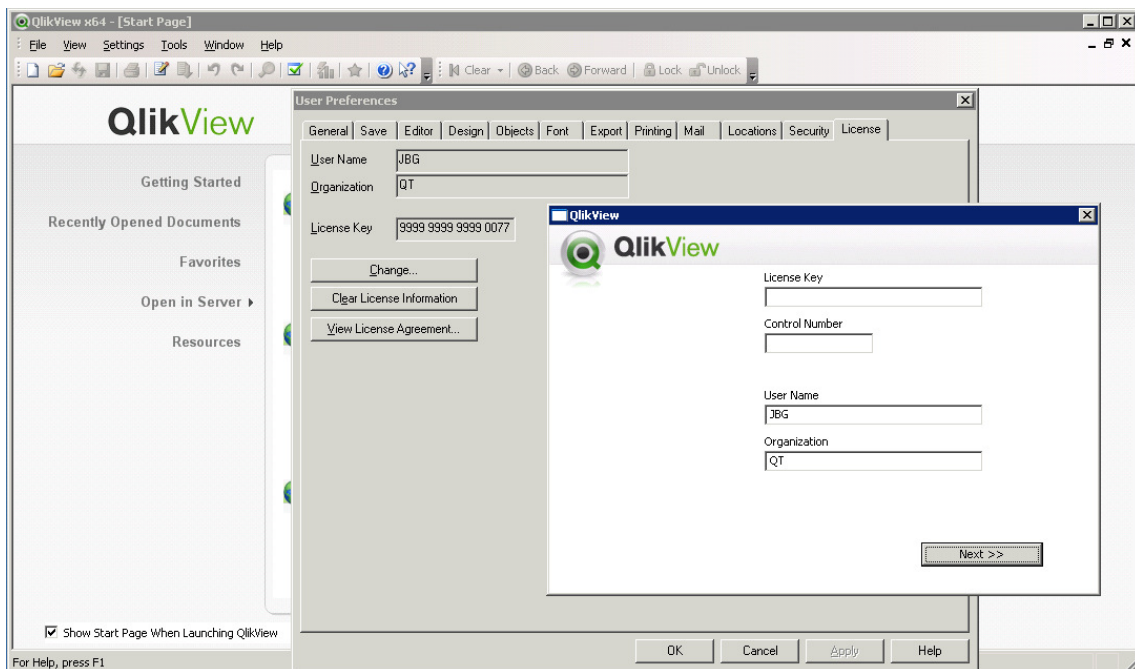
Qlikview 10 is now installed on your computer. Click **finish** to close the Wizard.

Start Qlikview 10 and go to **Help > About** to see which version has been installed. You can also see if your FAT Client is licensed or not.

# QlikView V10 Installation



If you want to register the license number on Qlikview go to **Settings > User preferences > License** and click on **Change**. Qlikview will open a window where you can enter the license key and the control number. Follow the next steps to achieve the registration.



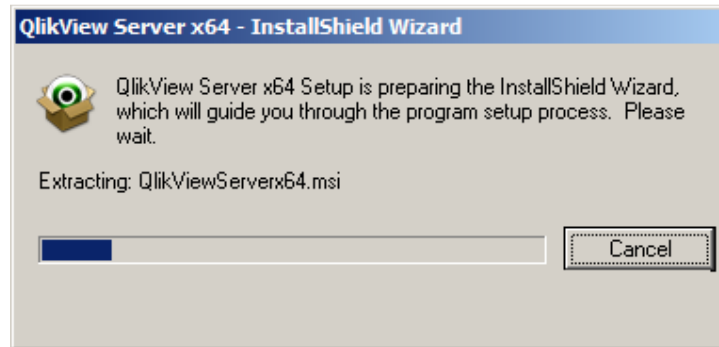
## 1-3 Install Qlikview v10 Server / Publisher

Download the Installation file from downloads page of Qliktech at <http://global.qlikview.com/download/>.

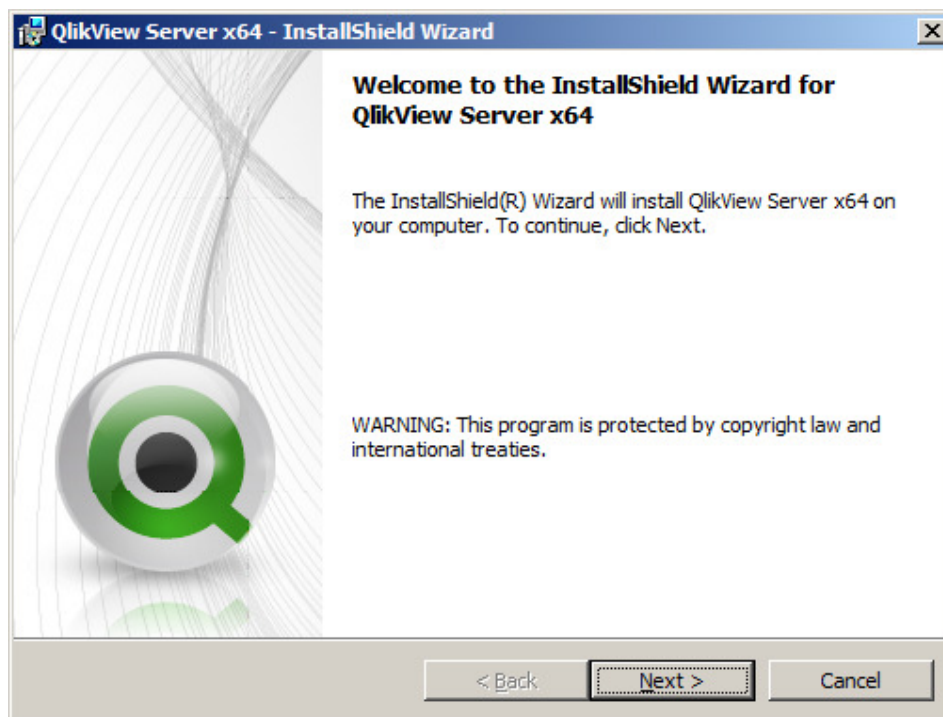
Download the executable file you want to install after checking the right file function, Product, Version, Language, Operating system and if needed release number. Save the file temporarily on your disk and launch the installation with a double click on the executable file. The following dialog will appear.



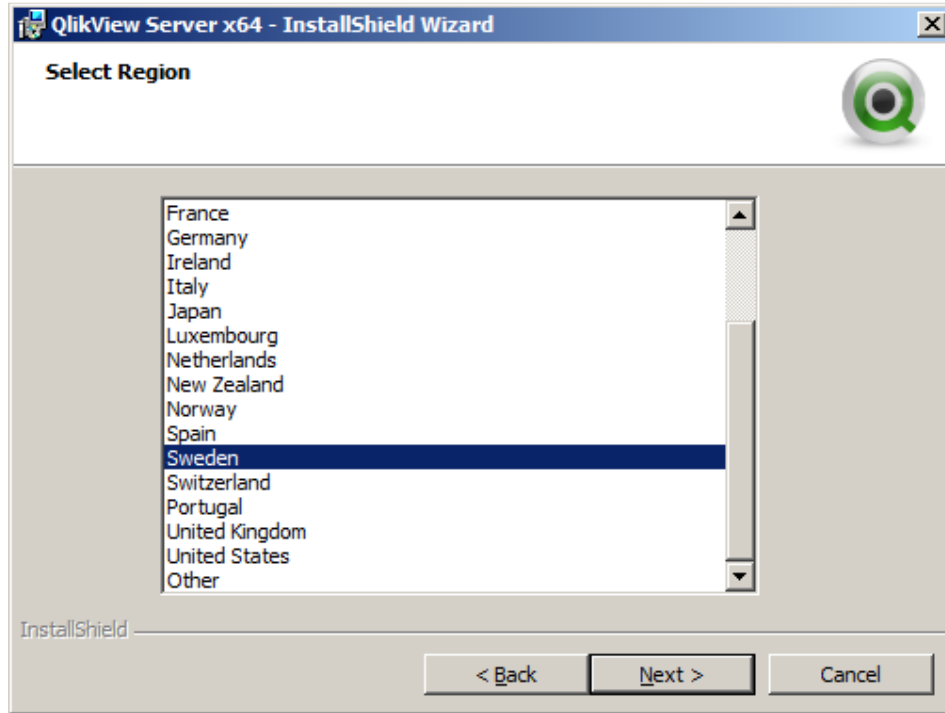
# QlikView V10 Installation



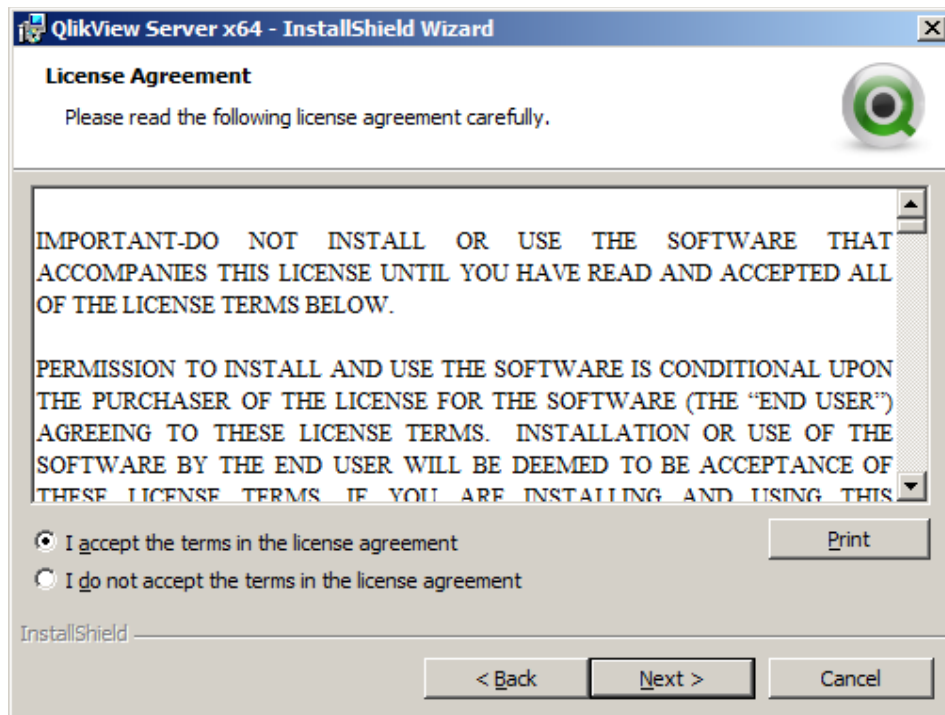
Go to **Run** to start the installation. Qlikview setup will extract the installation files on your disk and go to the following dialog.



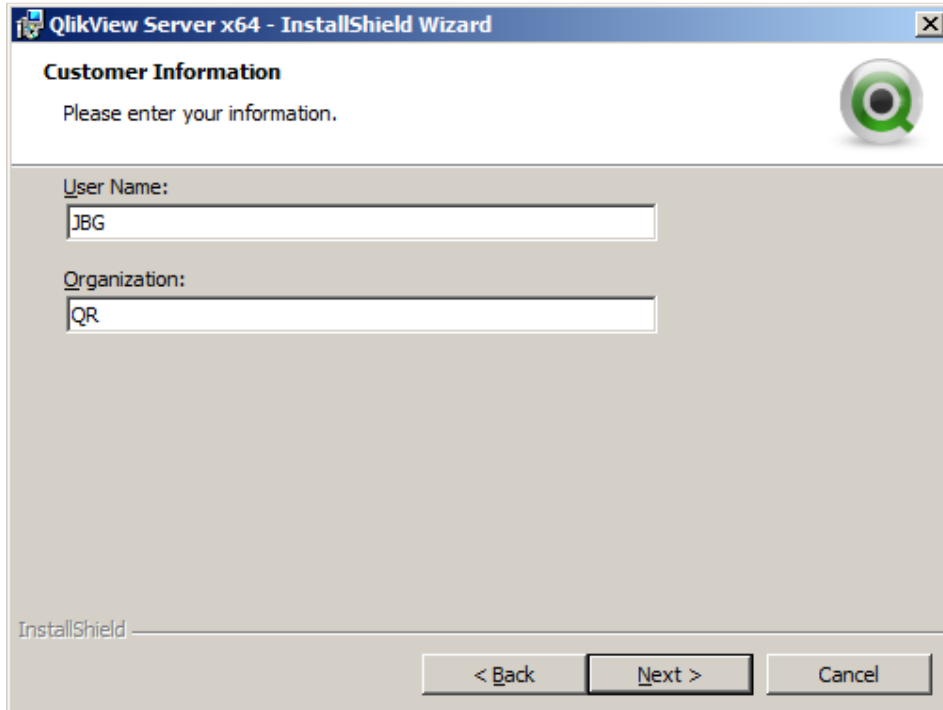
Click **Next** to launch the Install Shield Wizard.



Select your region and Click **Next**.

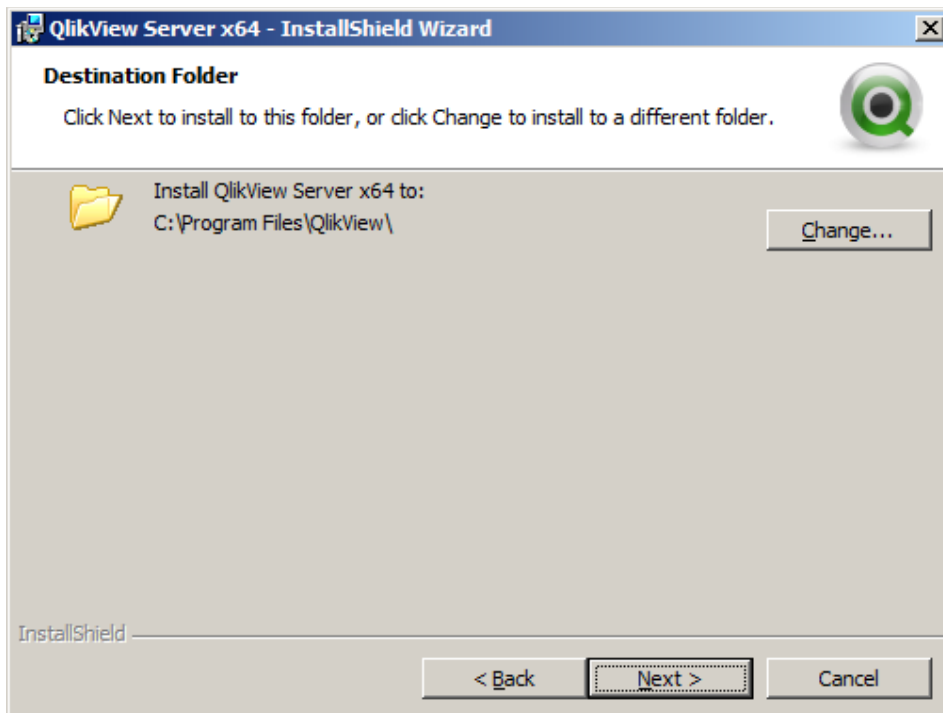


Read the license agreement and accept the terms. If necessary, print the license agreement. Click **Next**.



The screenshot shows the 'Customer Information' step of the QlikView Server x64 - InstallShield Wizard. The window title is 'QlikView Server x64 - InstallShield Wizard'. The main heading is 'Customer Information' with a sub-instruction: 'Please enter your information.' Below this, there are two text input fields: 'User Name:' containing 'JBG' and 'Organization:' containing 'QR'. At the bottom, there are three buttons: '< Back', 'Next >', and 'Cancel'. The 'Next >' button is highlighted with a dashed border.

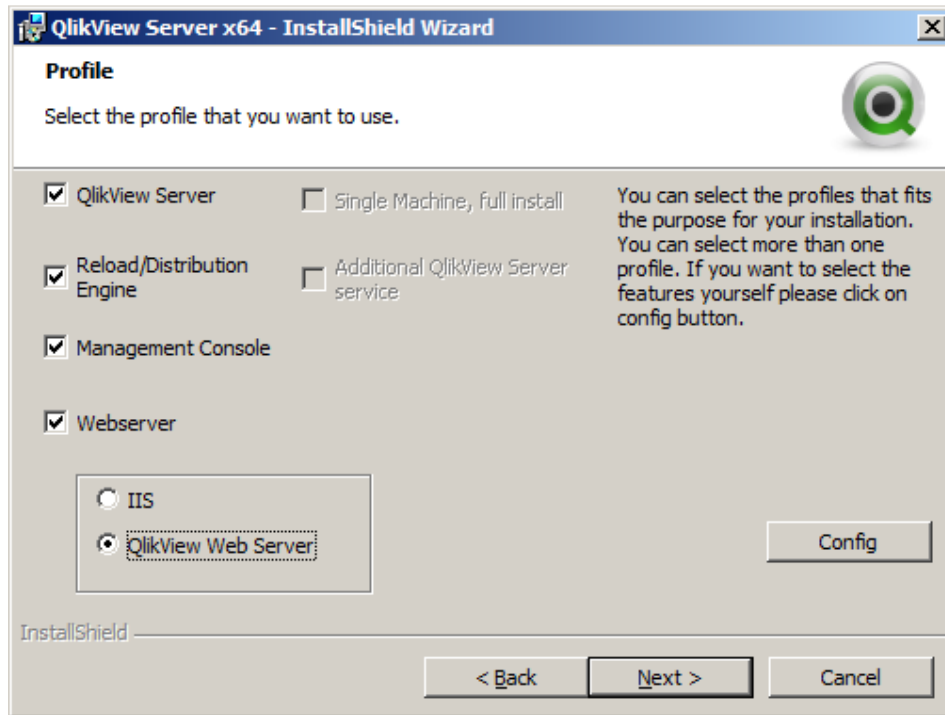
Enter your username and the name of your organization. Click **Next**.



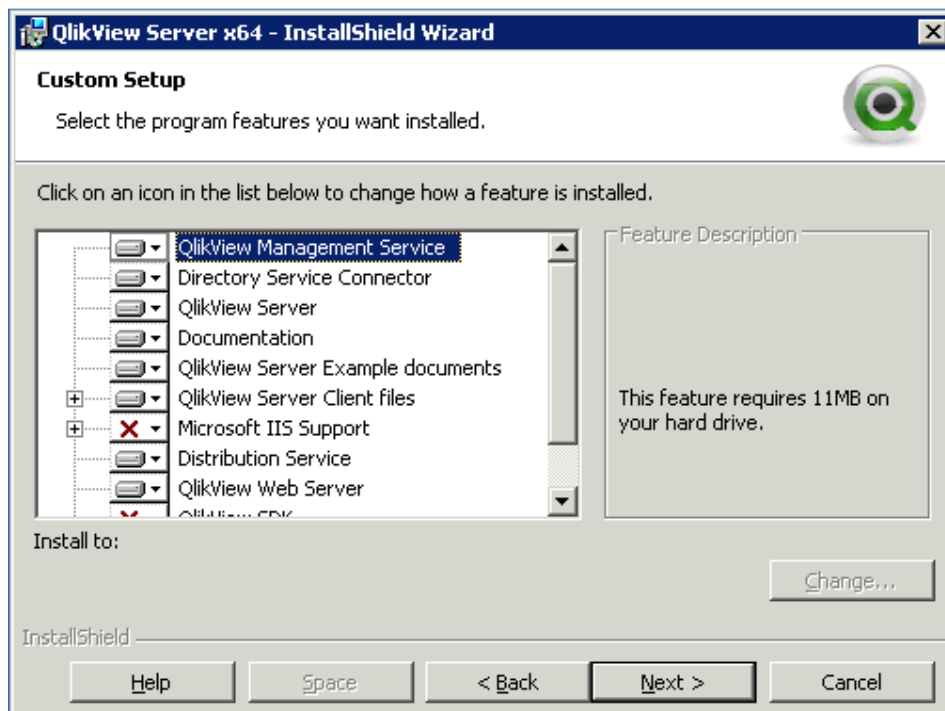
The screenshot shows the 'Destination Folder' step of the QlikView Server x64 - InstallShield Wizard. The window title is 'QlikView Server x64 - InstallShield Wizard'. The main heading is 'Destination Folder' with a sub-instruction: 'Click Next to install to this folder, or click Change to install to a different folder.' Below this, there is a folder icon and the text: 'Install QlikView Server x64 to: C:\Program Files\QlikView\'. To the right of this text is a 'Change...' button. At the bottom, there are three buttons: '< Back', 'Next >', and 'Cancel'. The 'Next >' button is highlighted with a dashed border.

You can change the folder of your program files. Click **Change**; however we do not recommend changing the default program folder path. Please also note, Microsoft does not support changing the default program folder location (see <http://support.microsoft.com/kb/933700/en-us>). If it is not necessary, click **Next**.



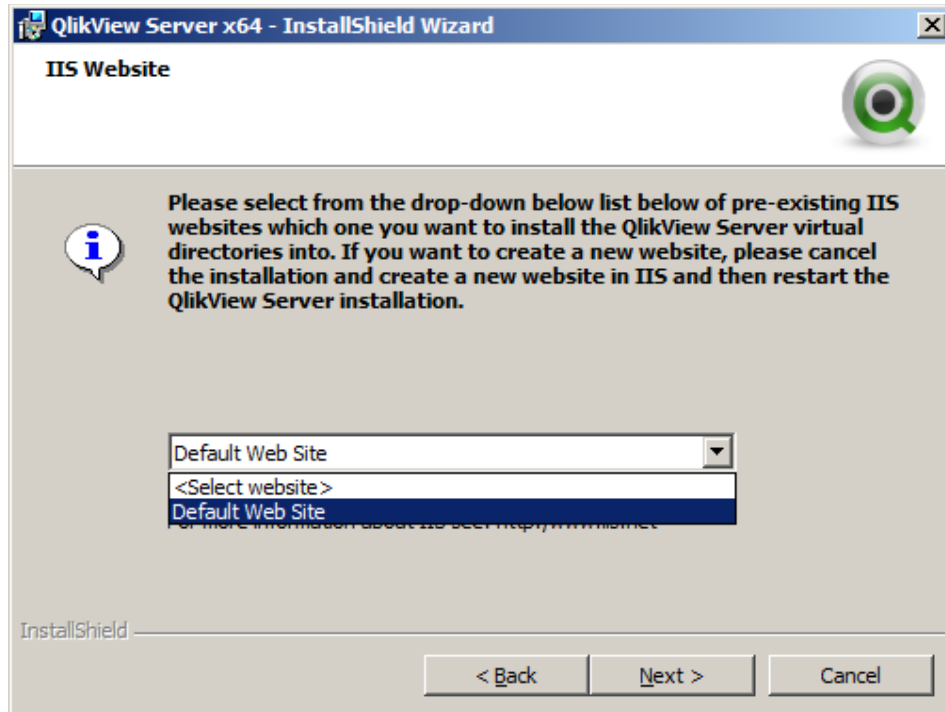


The wizard will let you choose which products you want to install. You can install Qlikview Stand Alone version or Qlikview Server and Publisher. If you install a web server you can choose between IIS and the Qlikview web server. Choosing **Config** will give you the possibility to check the options manually like you can see it on the picture below. If you want a **complete** installation, check the services you want and go to **Next**.

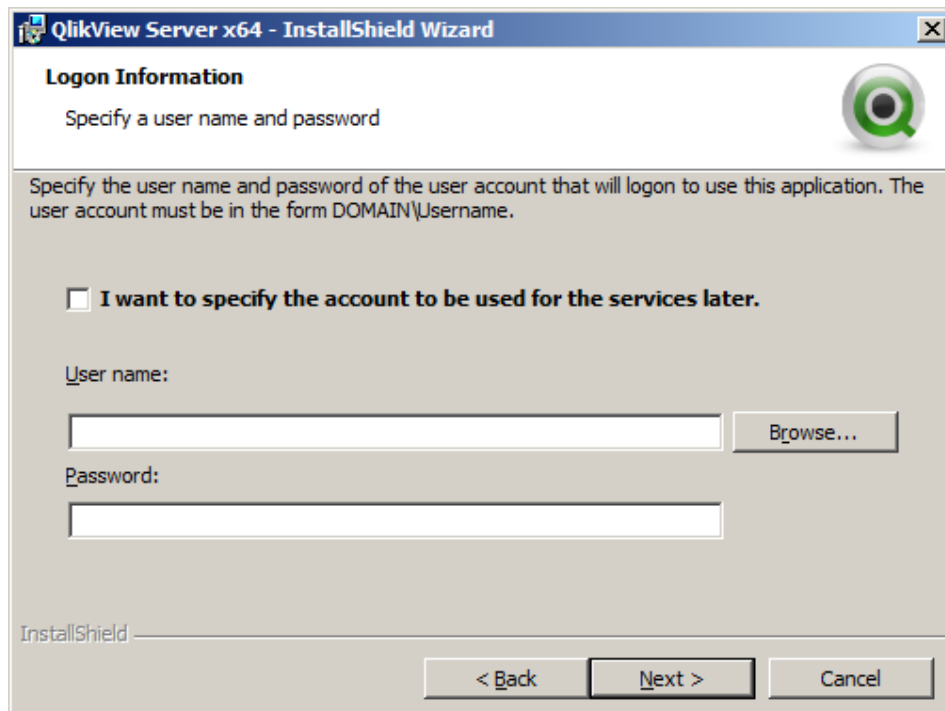


## Config Window for manual installation

If you choose to install web server on IIS please check IIS requirements at the beginning of the document before continuing with the installation.



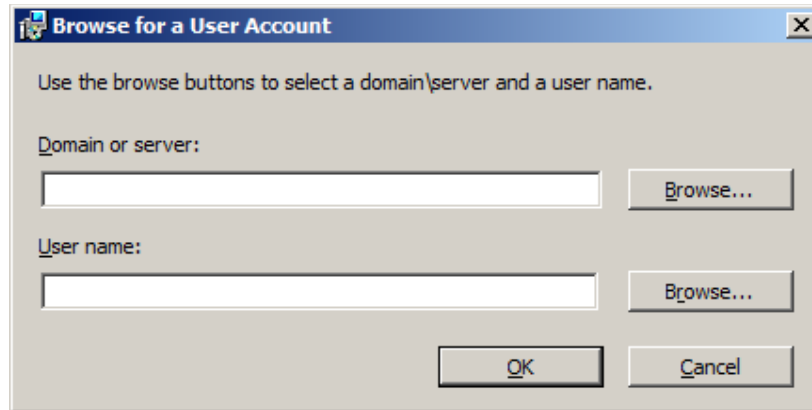
Select your website and click **Next**



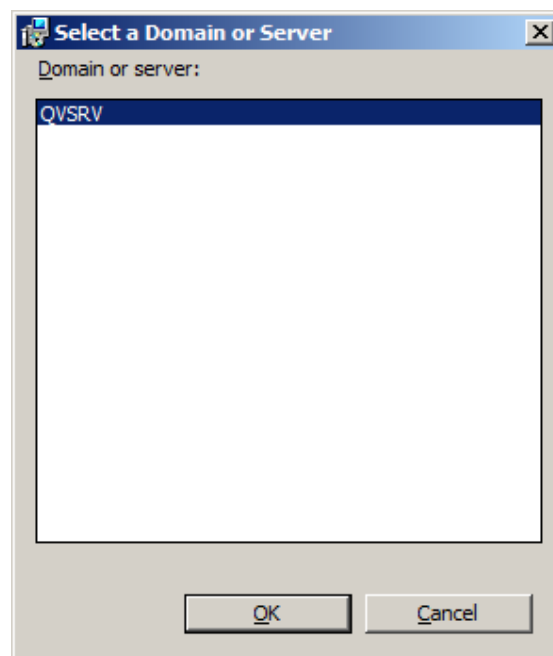
# QlikView V10 Installation



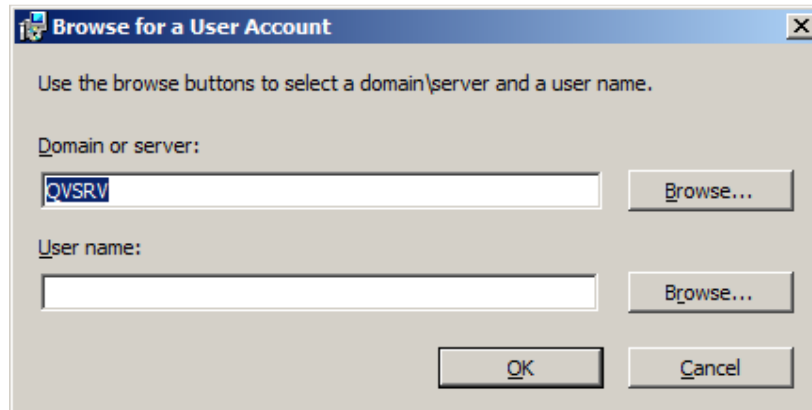
Qlikview server needs a special Account that will use and own the application. This account shall be part of a Domain controller. Click **Browse**.



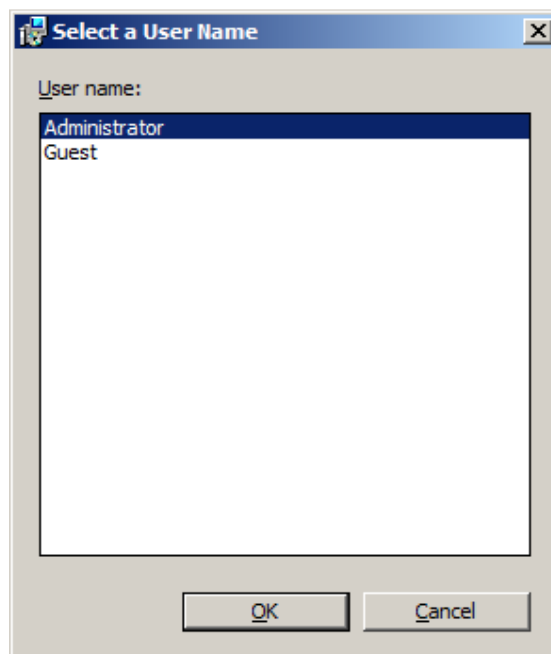
**Browse Domain or Server**



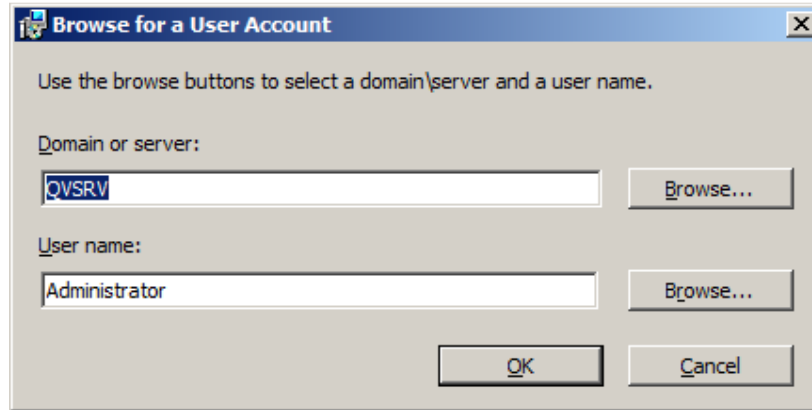
Choose a Domain



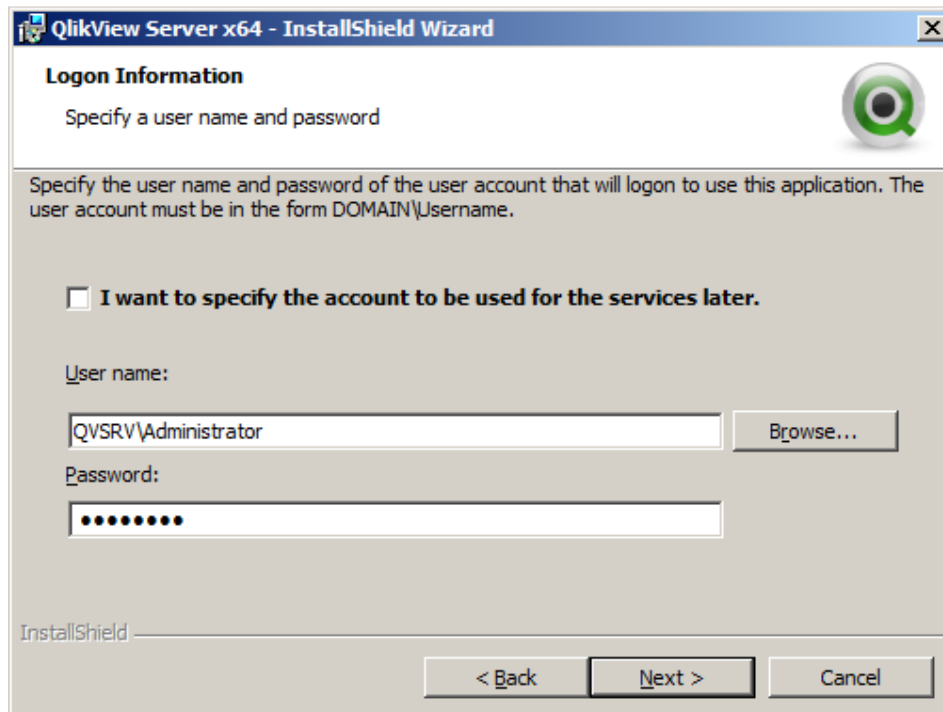
The domain is added. **Browse** Username



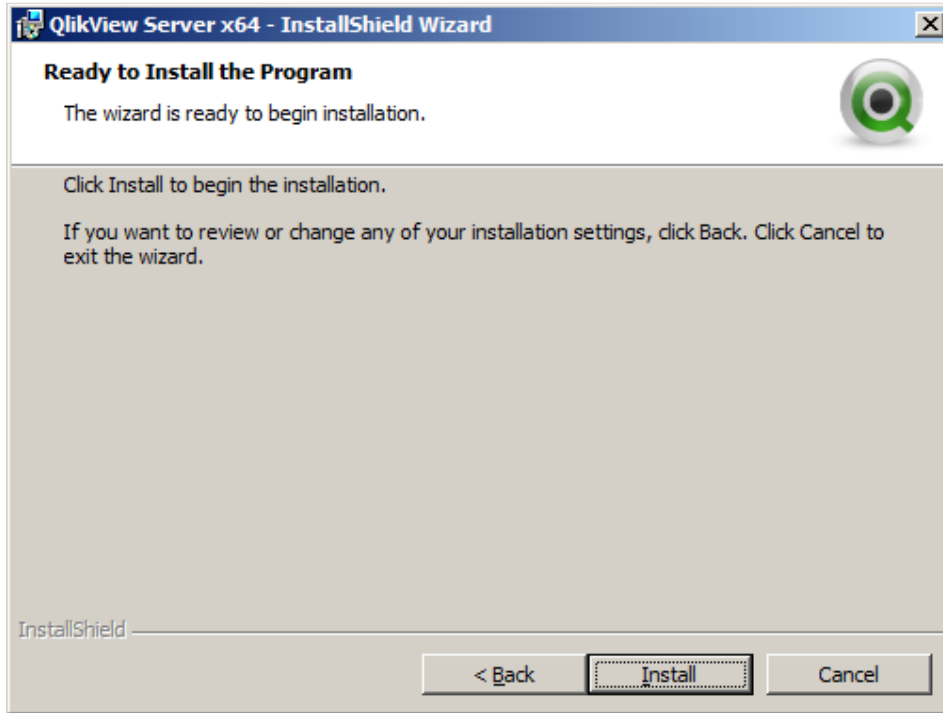
Choose a username



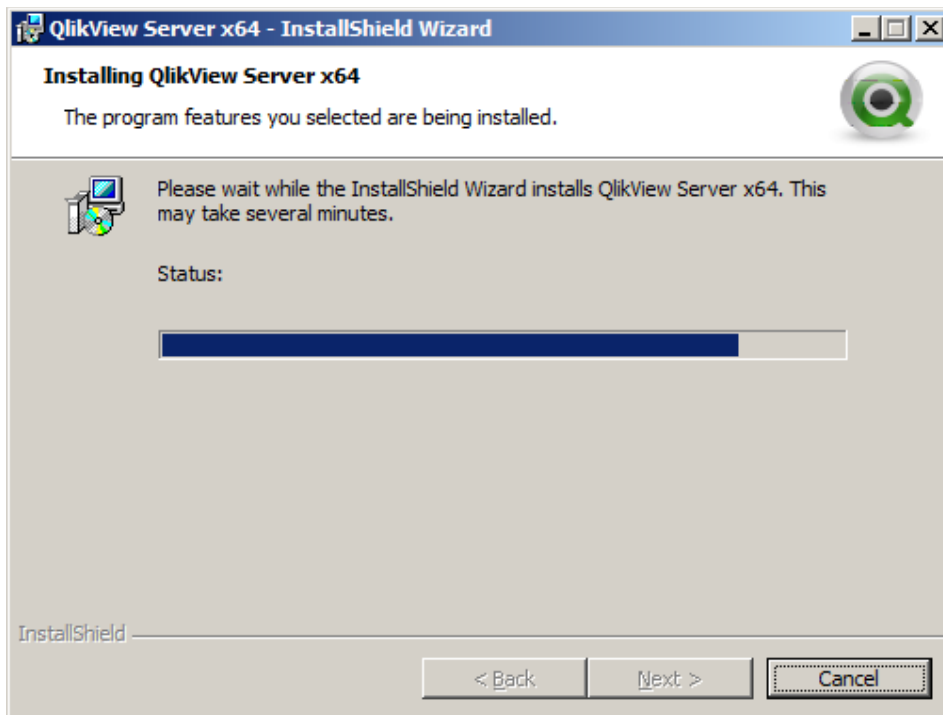
The user name is added. Click **OK**.



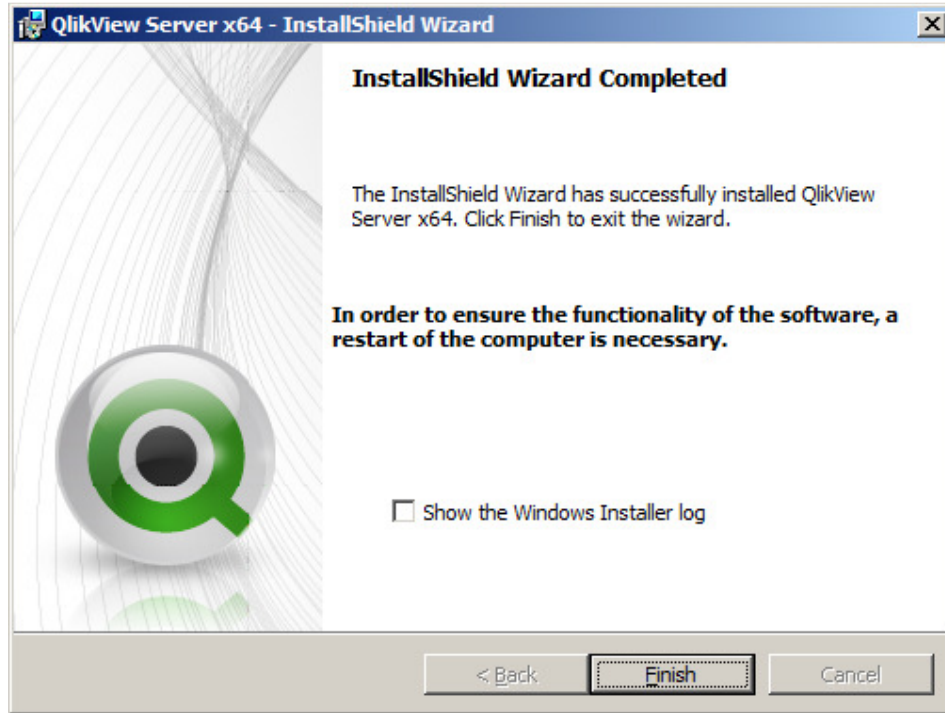
Enter the user password and click **Next**.



Click **Install** to start the installation



Qlikview 10 Server /publisher is being installed. You can cancel the Installation if needed.

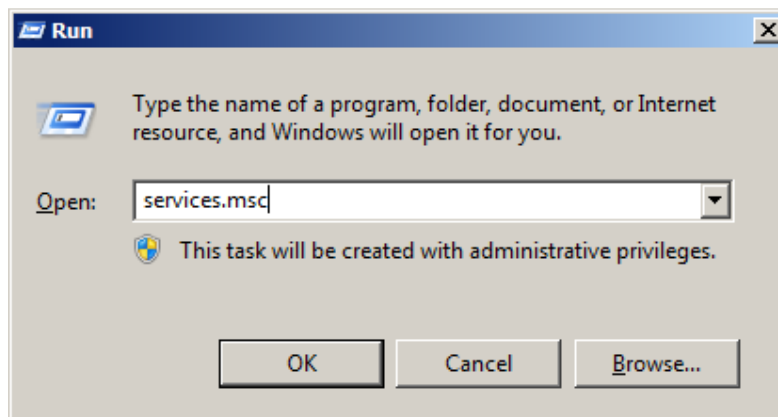


Qlikview 10 Server/Publisher is now installed on your computer. Click **finish** to end the Wizard.

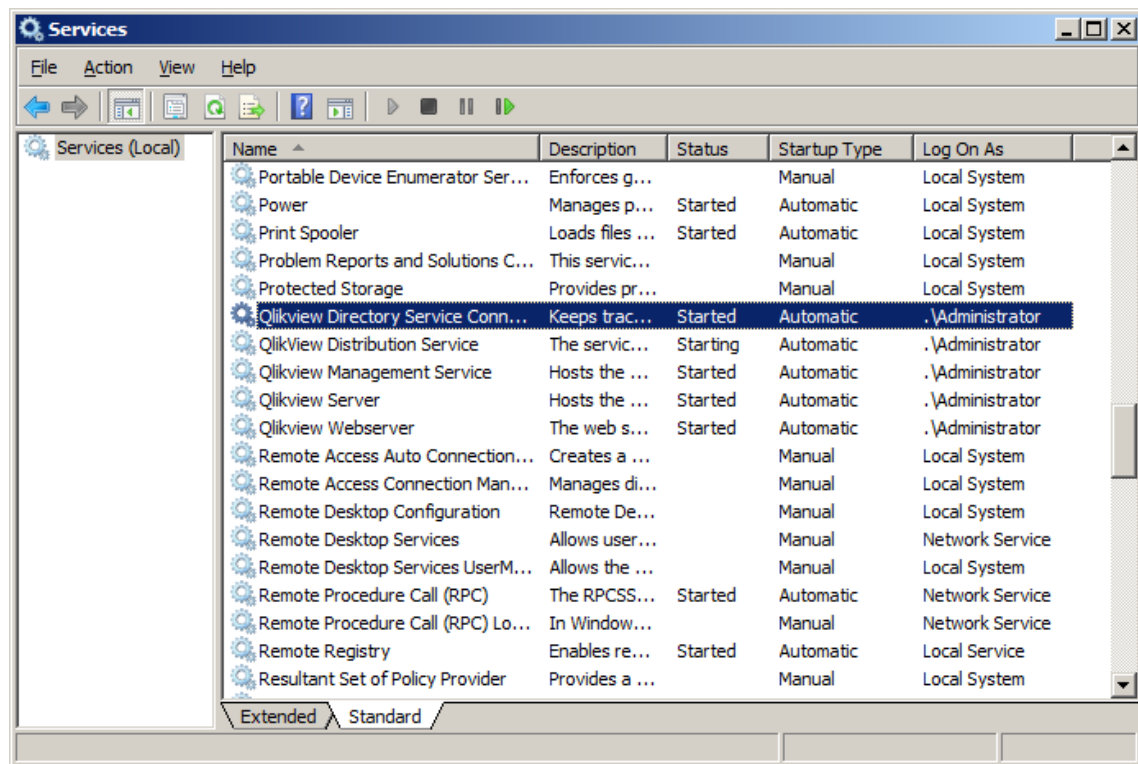
When the installation is finished, Qlikview will ask you to restart the server. This must be done to get the full functionality of Qlikview 10.

When you have restarted the computer, you can see if your server has been installed properly if you check the following settings.

Go to Windows **start** and launch **Run**. Enter **services.msc** in the dialog and click **OK**.

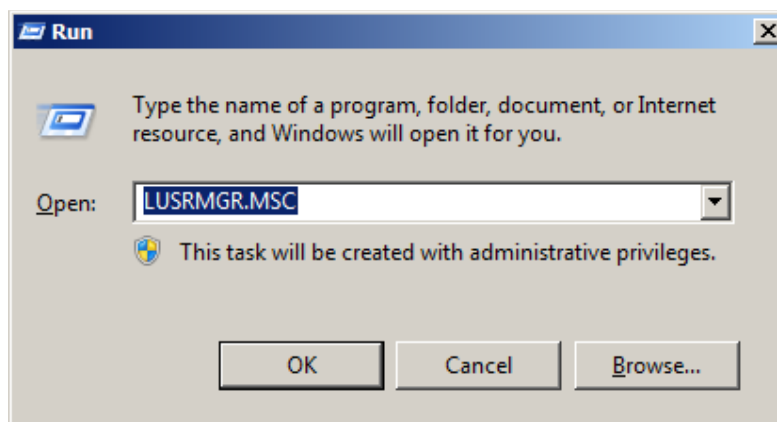


Locate Qlikview services and verify that all Qlikview services listed have started and that they logged on as the domain user you gave during the installation.



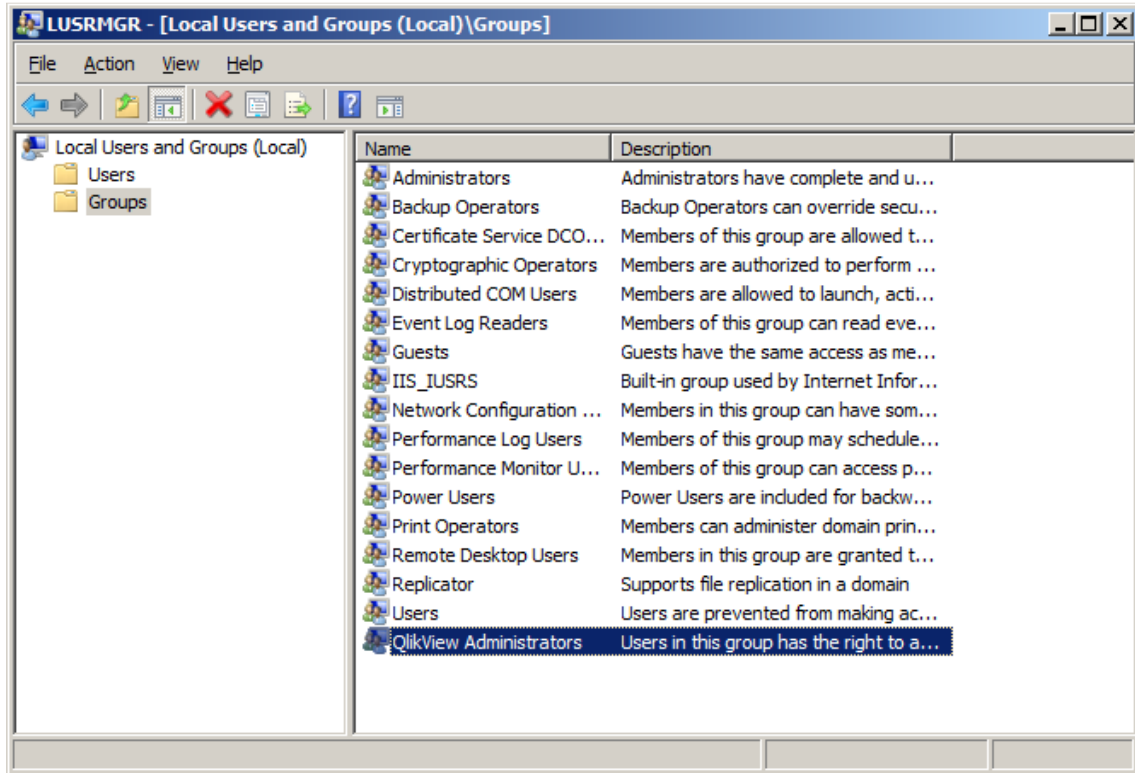
Windows services

Open **Local Users and Groups** through **Computer Management** or go to Windows **start** and launch **Run**. Enter **LUSRMGR.MSC** in the dialog and click **OK**.



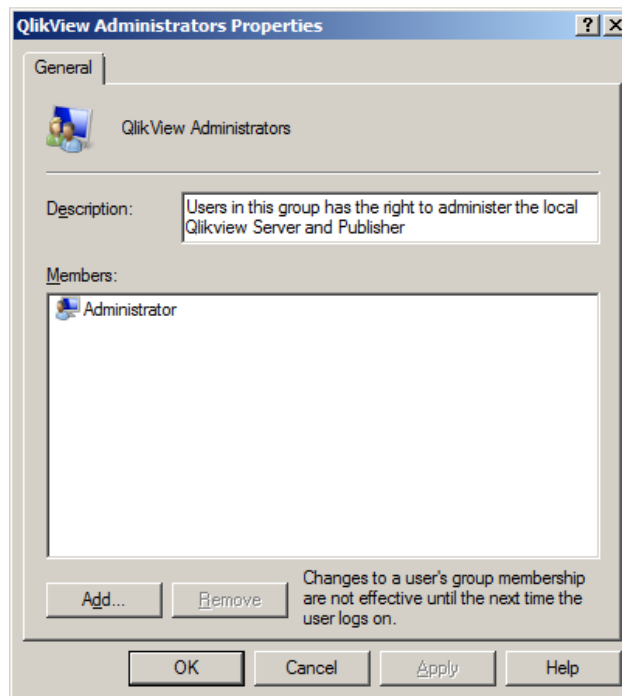
You have to check that a new group named **Qlikview Administrators** has been created.





Groups

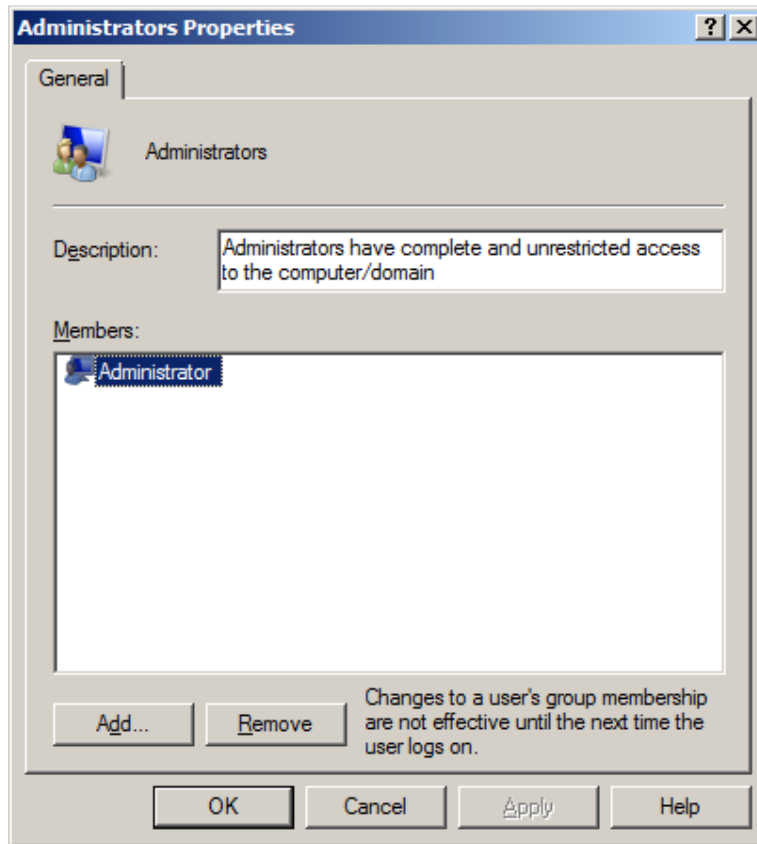
The domain user has to be in the group of Qlikview Administrator



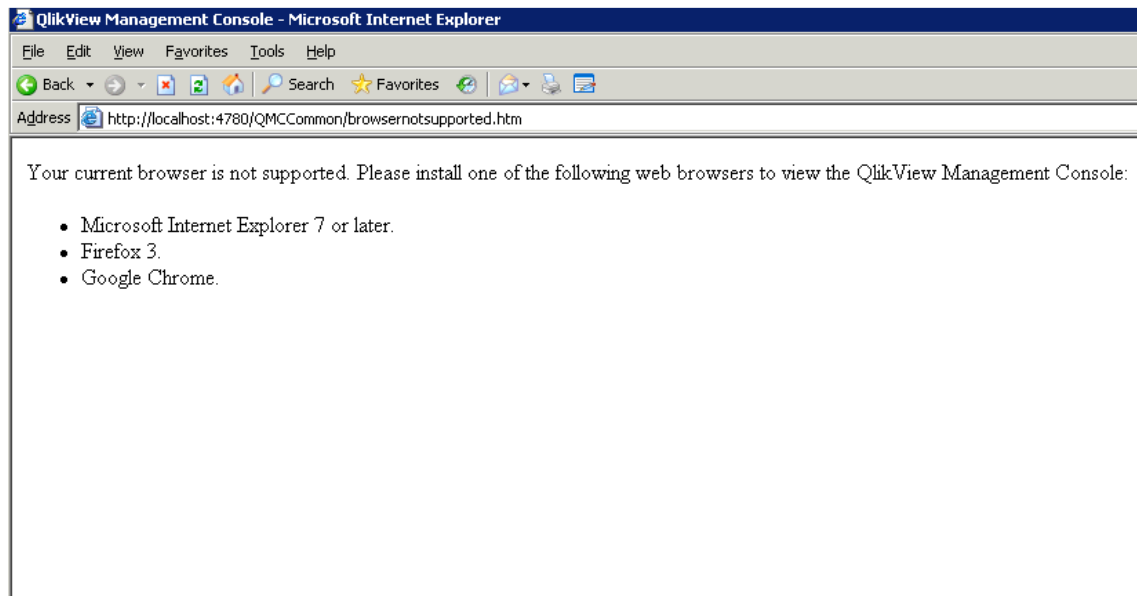
# QlikView V10 Installation



The domain user has to be in the group of Administrators of the local computer



When you have controlled these settings you can start the QEMC to manage your server. Start an internet client like internet explorer. If your Internet client doesn't pass the requirements you will get a message like the one below. Update your Internet client to a version that is compatible.



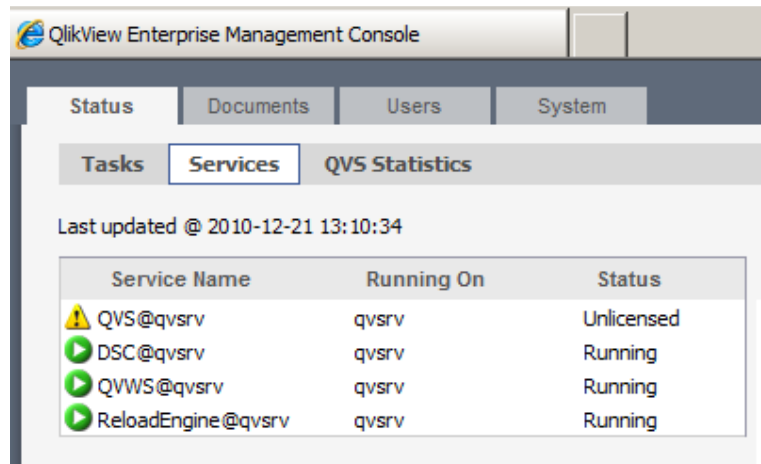
# QlikView V10 Installation



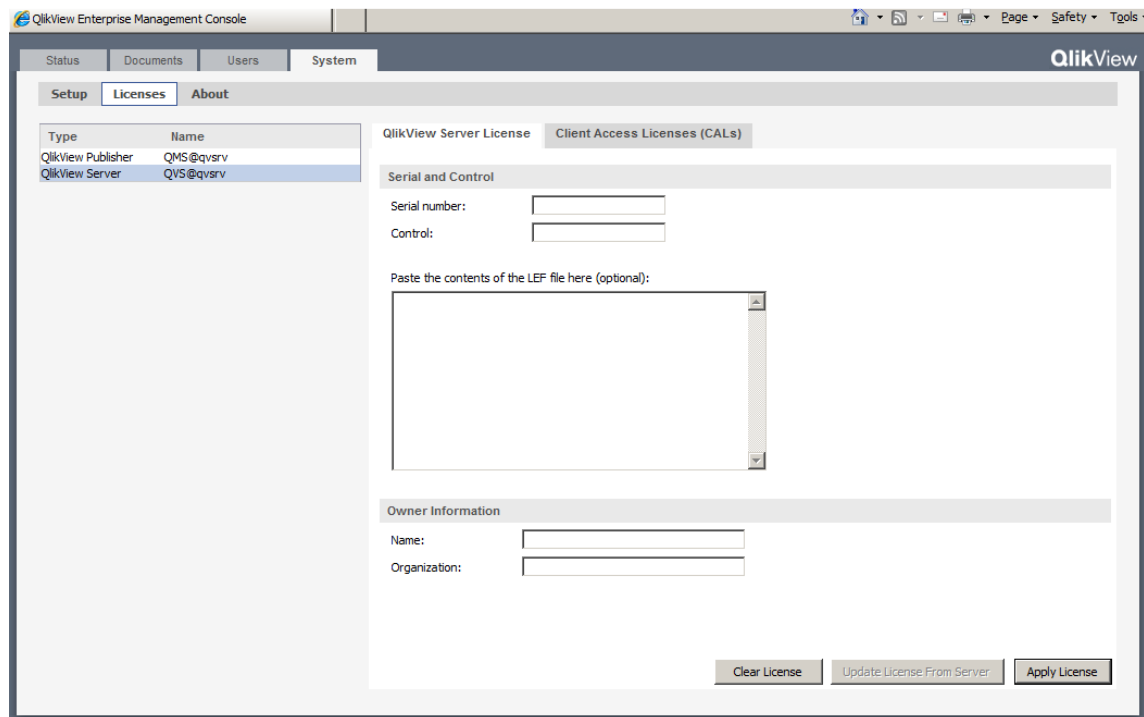
When you have started the QEMC, go to **Status > Services** and check that all installed services are activated, running and have green icons.

*The Qlikview Server (QVS) will have yellow icon and status Unlicensed until you apply License which is covered in next step.*

*If you chose IIS for your web server please see additional steps below to complete the installation.*



To apply license start QEMC and go to **System > Licenses**, select Qlikview Server, on the right side under **Qlikview server License** enter the license number and the control number and click Apply License. If you have a License for Publisher do the same steps to register it.

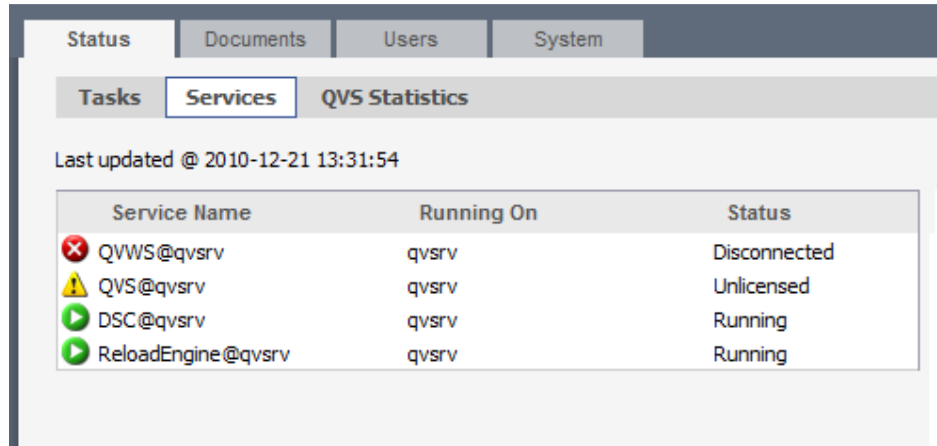


Licenses

# QlikView V10 Installation



If IIS was chosen as a web server during installation please perform the following steps after installation:



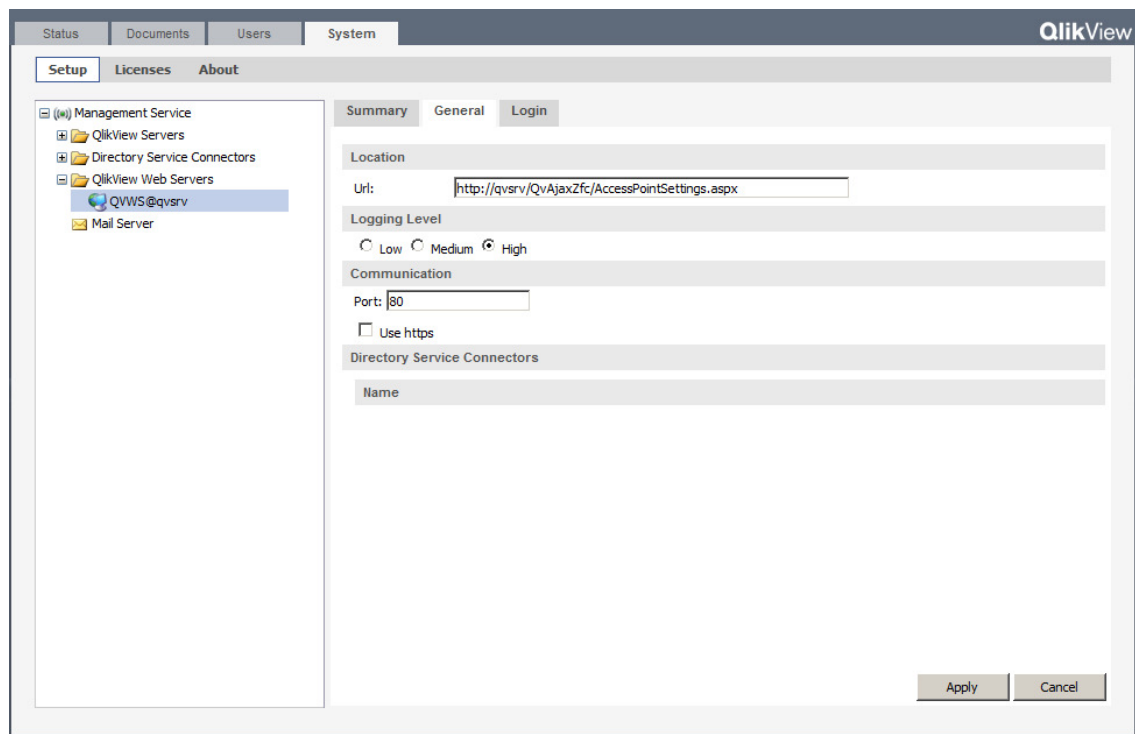
Start QEMC, go to **System**, expand **QlikView Web Servers** and click on **QVWS@hostname**.

On the **General** tab of **QlikView Web Servers** please modify the URL as follows:

**http://hostname/QvAjaxZfc/AccessPointSettings.aspx**

*Replace "hostname" with you server's computer name*

And click Apply



Please restart QlikView services to refresh the configuration.

## 2 - Upgrade to Qlikview v10

### 2-1 Migration considerations

The following considerations apply when migrating QlikView Server from version 9.x to version 10.x and within 10.x where applicable.

- Installation of QlikView Server now requires a reboot of the Operating System for proper operation.
- The QlikView Access Point is now the default start page for QlikView Server. The legacy sample pages are still available, but Access Point is the recommended portal for all access to QlikView documents.
- The old Management Consoles for QlikView Server and Publisher have been completely replaced by the new QlikView Management Console. You must start the QMC in order to register a license for the QVS, unless you already have a valid license on the computer running the QVS.
- The AJAX client has undergone major restructuring and extension. AJAX pages no longer need to be pre-generated as in previous versions. This also means that the URLs to invoke a document with the AJAX client have changed.
- Anti aliasing on fonts is no longer available
- There are no known issues when using a 10.00 server with earlier clients (7.52 and later). When using a 10.00 client against an 8.50 server (or earlier) the usage of the Home feature causes an error. Proper client-server compatibility with versions prior to v7.52 cannot be guaranteed.
- QlikView has a common file format for versions 7, 8, 9 and 10.
- Windows 2000 is no longer an officially supported host operating system. However, in some cases the QlikView Desktop may still work just fine.

### 2-2 Cross-release compatibility

- There are no problems using QlikView Desktop version 10 and earlier versions in parallel on the same computer. Also, QlikView has a common file format for versions 6, 7, 8, 9 and 10.
- There are no known issues using a QlikView 10 server with an earlier installed client (7.52 and later), although some QlikView 10 server features will not be recognized by the client.
- Earlier Java clients do not work with a QlikView 10 server. The QlikView protocol for Java is no longer available.

- Earlier Ajax clients (web pages that are not generated on-the-fly by QlikView Server) do not work with a QlikView 10 server.
- Earlier Mobile clients do not work with a QlikView 10 server.

## 2-3 Upgrading Qlikview Server / Publisher

### ***Minimum Versions for Upgrade***

File format is compatible between v6, v7, v8, v9 and v10

QVS v10 is compatible with clients from v7.52 upwards (Not recommended for long term use)

Publisher Upgrade tool can be used from v4 QVPR upwards (v9 to v10 upgrade is automatic)

New updated versions of mobile clients needed for v10 (Due within 4 weeks of GA)

### ***QlikView Server upgrade***

#### ***From QlikView 8***

- The QlikView Publisher database from a QlikView 8.5 cannot be used for QlikView 10, unless the upgrade tool delivered with QlikView 9 is used.

#### ***From QlikView 9***

- When having IIS and updating from Version 9 to Version 10 the QlikView virtual folders (QlikView, QVAnalyzer, QVAjaxZfc, QVClients, QvPlugin, QVJava and QVPlugin) must either be manually deleted after un-installation or changed to point to the new folders (QlikView, QlikViewDesktop, QVAjaxZfc, QvClients and QvPlugin) after the upgrade is done.
- If there is no Publisher license (only a QlikView Server license) and reload tasks have been set up, a manual step is required.
  1. After installation, start all QlikView services.
  2. Go to the systems tab and select the QlikView Server.
  3. Go to the General tab for the QlikView Server
  4. Under the heading "Migrate Schedules" you will find a button to migrate the schedules. Note that this will only appear if you have any tasks to migrate and if the Management Service has connection to the QlikView Distribution Service.
- To avoid that the uninstall of version 9 removes the .config files, please make a backup copy of the ones you have modified manually. The most common one is QlikView Distribution Service.exe.config.
- After an upgrade, the supervision accounts needs to be added in the QEMC again.

#### ***From QlikView 10 RC***

- When updating from RC or RC2 to the IR, the QlikView virtual folders (QlikView, QVAnalyzer, QVAjaxZfc, QVClients, QvPlugin, QVJava and QVPlugin) must either be manually edited in the QEMC or deleted from the config.xml file of the QlikView Web

# QlikView V10 Installation



Server (QVWS) prior to installing the QlikView Server. If the MS IIS is used, the virtual folders need to be deleted there too.

## ***Upgrade Steps***

- Backup existing environment
- Uninstall Previous Publisher and Server version
- Install QVS v10
- If previously using v8.5 or below then Upgrade Publisher Repository
- Upgrade Developer
- Test
- Upgrade Clients
- Go Live !

## ***Backup***

Backup qvw's, qvd's, .meta files, .shared files and .pgo files

- See QVS Management Console for documents folders and mount points to backup
- Shared files will be modified by v10

Backup QVPR

- If XML C:\Documents and Settings\All Users\Application Data\QlikTech\Publisher\CommandCenter\QVPR
- If SQL Server – use Microsoft SQL Backup tools

## ***Uninstall Previous Version***

QVS v10 installation cannot de-install v8.5 or earlier Publisher versions

- These need to be manually uninstalled via Add/Remove Programs
- If you don't manually uninstall previous releases you will get duplicate services and potential corruption issues

QVS v10 installation will trigger an uninstall of previous QVS versions

- Although you can do this manually if you want!

# QlikView V10 Installation



## ***Install v10***

Consider if you want to use IIS for the web server or the QlikView Web Server

- If IIS additional components need installed and additional configuration is required post install

Windows Accounts needed to run v10 services require local machine administration privileges

Reboot once installed recommended

## ***Upgrade the QVPR v8.5 or earlier versions***

If using Publisher v8.5 or lower, use the Upgrade tool

- Review the upgrade documentation provided
- Apply Publisher License in v10 QEMC
- Stop the 'QlikView Management Service'
- Run upgrade tool, follow on screen instructions (Need to install the Support Files option in the v10 installer)

## ***Move the QVPR folder***

- From C:\Documents and Settings\All Users\Application Data\QlikTech\Publisher\CommandCenter
- To C:\Documents and Settings\All Users\Application Data\QlikTech\ManagementService

Restart 'QlikView Management Service'

## ***QlikView Developer***

Upgrade QlikView Developer

- Install into separate directory if you want to preserve previous version

Evaluate other new features

## ***Final Steps***

Test Publisher tasks, environment, etc

Upgrade end user clients to v10

- Evaluate v10 AJAX client with view to future roll out

Go Live!



## 3 What is new in Qlikview 10?

### 3-1 Stand Alone

- Association Search
- Container Object
- List boxes with expressions
- List boxes with background images and transparency for none
- Classic selection styles
- Mekko Chart
- Linked Objects
- Improved Current Selection box
- Selection Styles (LED Check box)
- Menu Caption icon
- Table and field comments
- (Extensions)

More information about the listed features can be found here:

What's New in Qv10 Demo Storyline-20100714.doc from Shima Nakazawa.

### 3-2 Server / Publisher

#### Ajax client improvements

Apart from the new layout features listed above, a number of Ajax specific features have been added:

- Ajax performance (Manual page 12)
- UI upgrades (Manual page 12)
- Extension objects (Manual page 12)
- Session disconnect button (Manual page 12)
- Session recovery (Manual page 12)

#### Server Components

- Management APIs ( Manual page 13 )
- User Management ( Manual page 13 )
- Document Administrator ( Manual page 256 )
- Section Access Management ( Manual page 263 )
- Improved Document Lists ( Manual page 13 )
- Directory Service Provider for Configurable LDAP ( Manual page 170 )
- Directory Service Provider for ODBC ( Manual page 168 )
- Multiple Events Trigger ( Manual page 64 and 115)
- Copy/Paste Tasks and Import Task ( Manual page 97)
- QlikView Server CPU Throttling ( Manual page 146)

# QlikView V10 Installation



- Granular Server Objects Permissions ( Manual page 125)
- Browsable Mount Check Box
- Notification E-mail
- Audit logging ( Manual page 224, 225)
- Minor changes
  - File modification date is shown in Access Point.
  - Possibility to sort files in Access Point on file modification date.
  - “Mobile clients” is now treated as one of several possible clients, which gives the possibility to specify that a document should be e.g. visible only to mobile clients, or invisible to mobile clients.
  - Possibility to make shared objects visible to anonymous users.
  - Possibility to connect to the QlikView Distribution Service and to the Directory Services Connector using a user name.
  - PDF distribution to folder.
  - Possibility to use bookmarks as reduction rules.
- APIs
- COM API
- QlikView Server Management API
- QlikView JavaScript API