

# Moving QVPR To a Different Server

---

QlikView 10 to 10 migration and QlikView 9 to 10  
migration

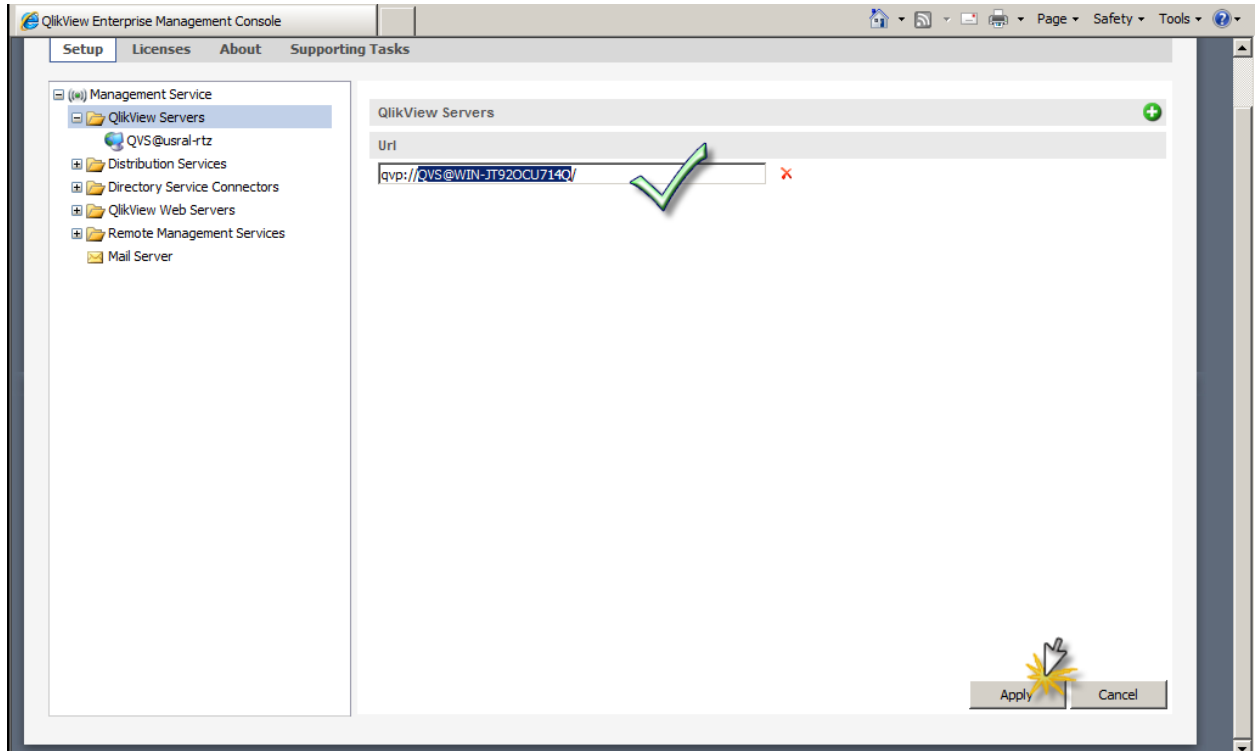
Michael Terenzi & Brett Bleess

4/12/2011

# QlikView

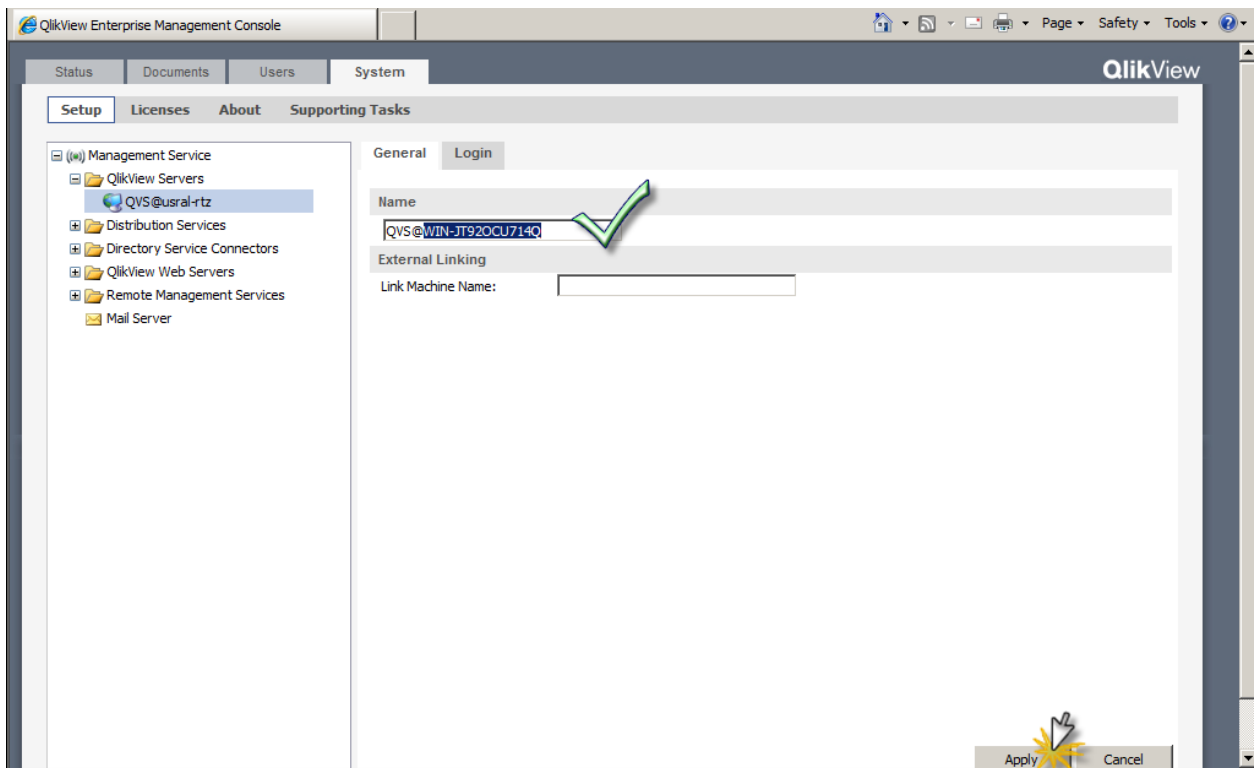
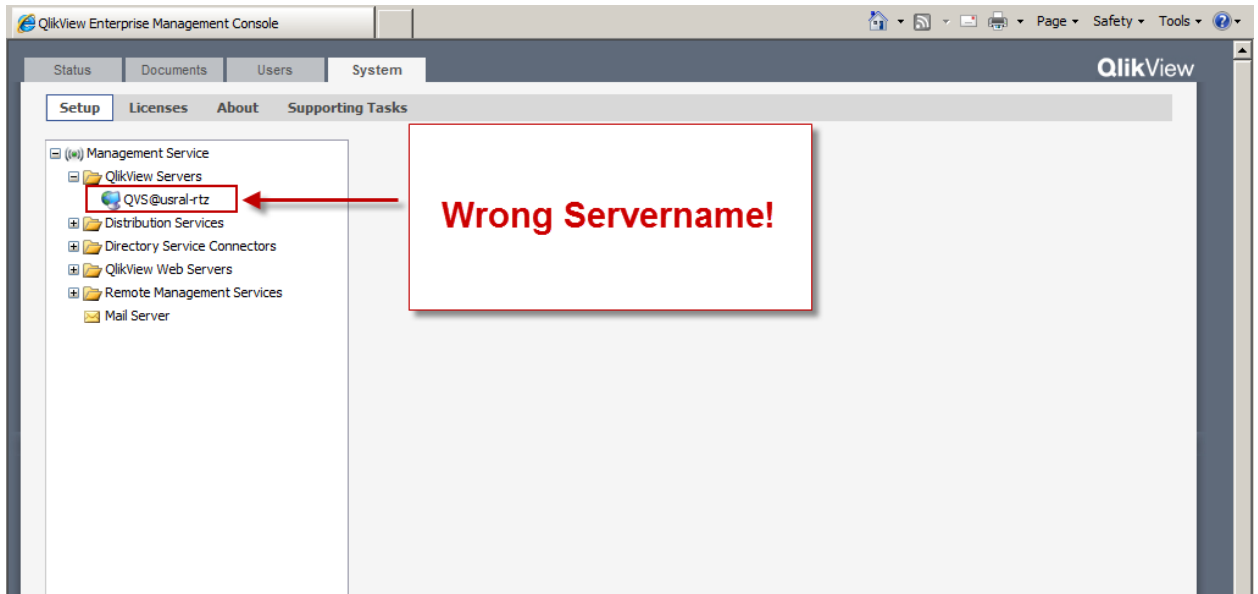
Moving QVPR To a Different Server (QlikView 10 to QlikView 10, see additions at end for 9 to 10)

1. On the old server, I made sure none of my tasks would be distributing to any user not on the new/future directory.
2. Go to the new server and stop the QlikView Distribution Service and the QlikView Management Service.
3. On the new server, rename the QVPR\_servername.ini file to QVPR\_servername.iniOLD. It is located in C:\ProgramData\QlikTech\ManagementService on Server 2008 and C:\Documents and Settings\All Users\Application Data\QlikTech\Management Service on Server 2003.
4. Rename the QVPR to QVPROld
5. Copy the QVPR folder on the old server and paste it to the exact same location on the new server (same directory as the QVPR\_servername.ini file).
6. Restart the services.
7. Open the QEMC and navigate to System>QlikView Servers folder. Change the old servername to the new one in the URL, hit Apply.



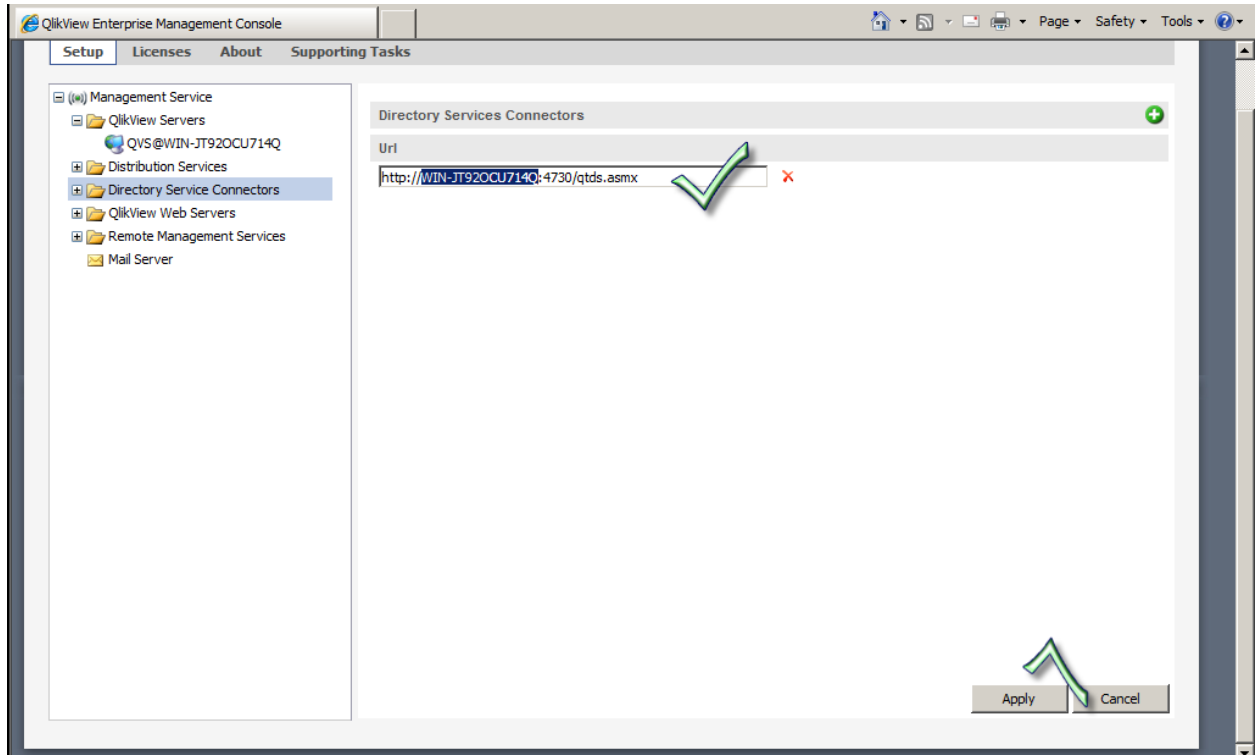
# QlikView

- Expand QlikView Servers >QVS@servername, notice the wrong servername! Change this name to the new Server name, then hit 'Apply'.

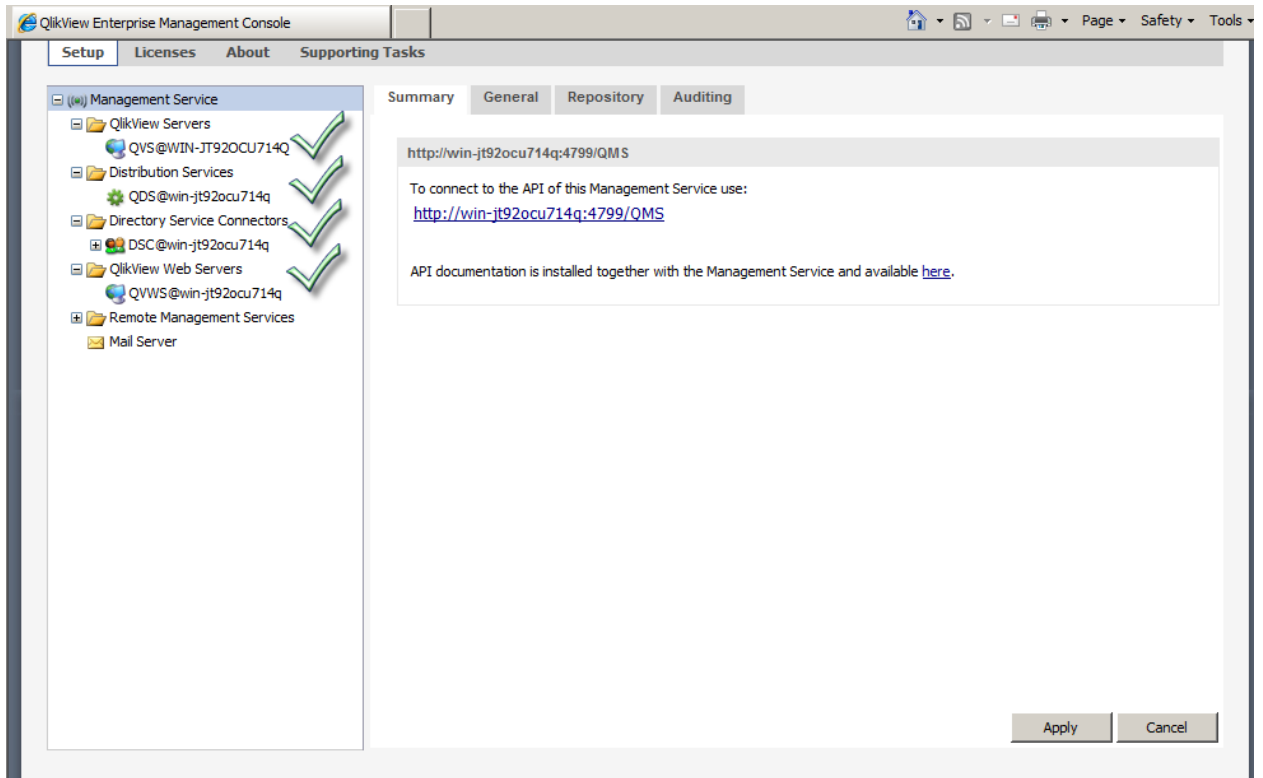


# QlikView

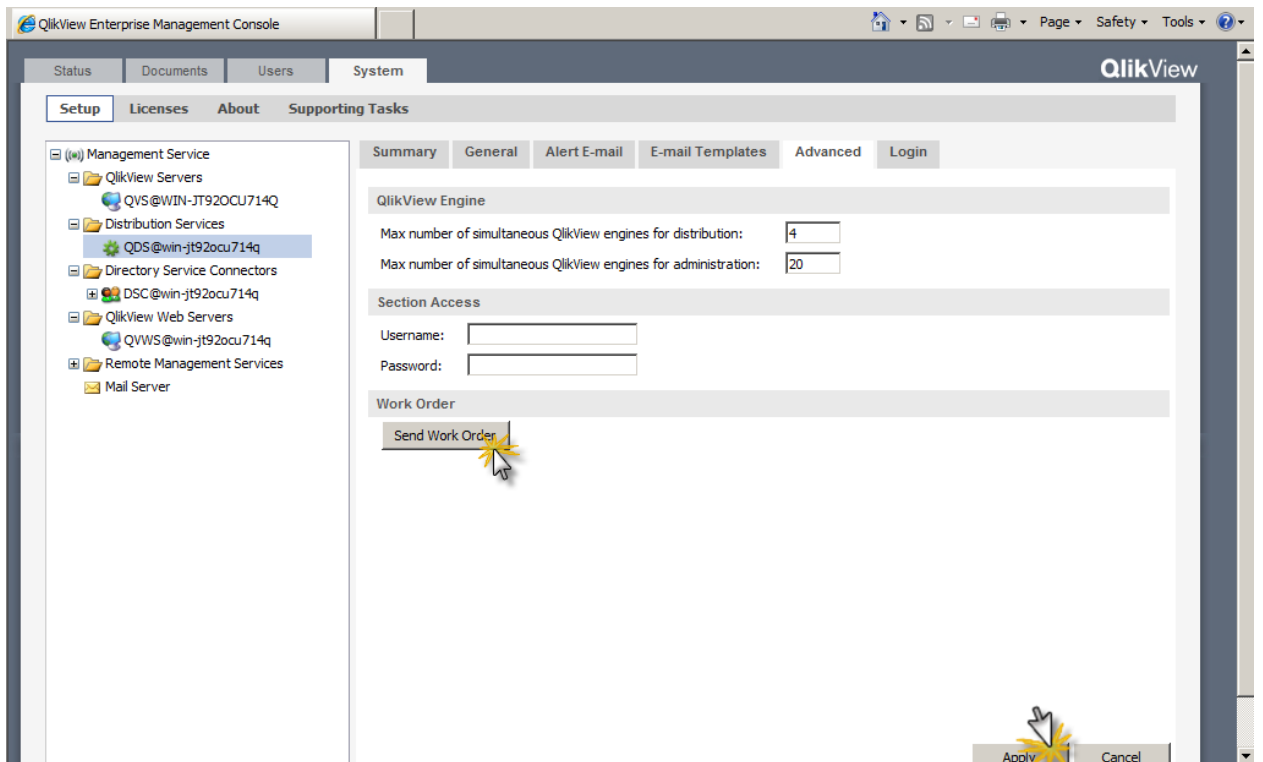
9. Click on the Distribution Services directory and change old servername with the new one **in the URL**. Hit Apply. You will not need to expand the directory out and do this twice for each directory from here on out, only once in the URL should do.
10. Go to the Directory Service Connector and repeat step 9.



11. Go to the QlikView Web Servers Folder and repeat step 9.
12. When you are finished, all of your Management services directories should now have the current servername.



13. Navigate to the Distribution Services> Advanced tab. Click Send a new work order and hit Apply.



14. Now, if you navigate back to the Status>Tasks tab, you should see your migrated tasks appearing under the new server's task list.

# QlikView

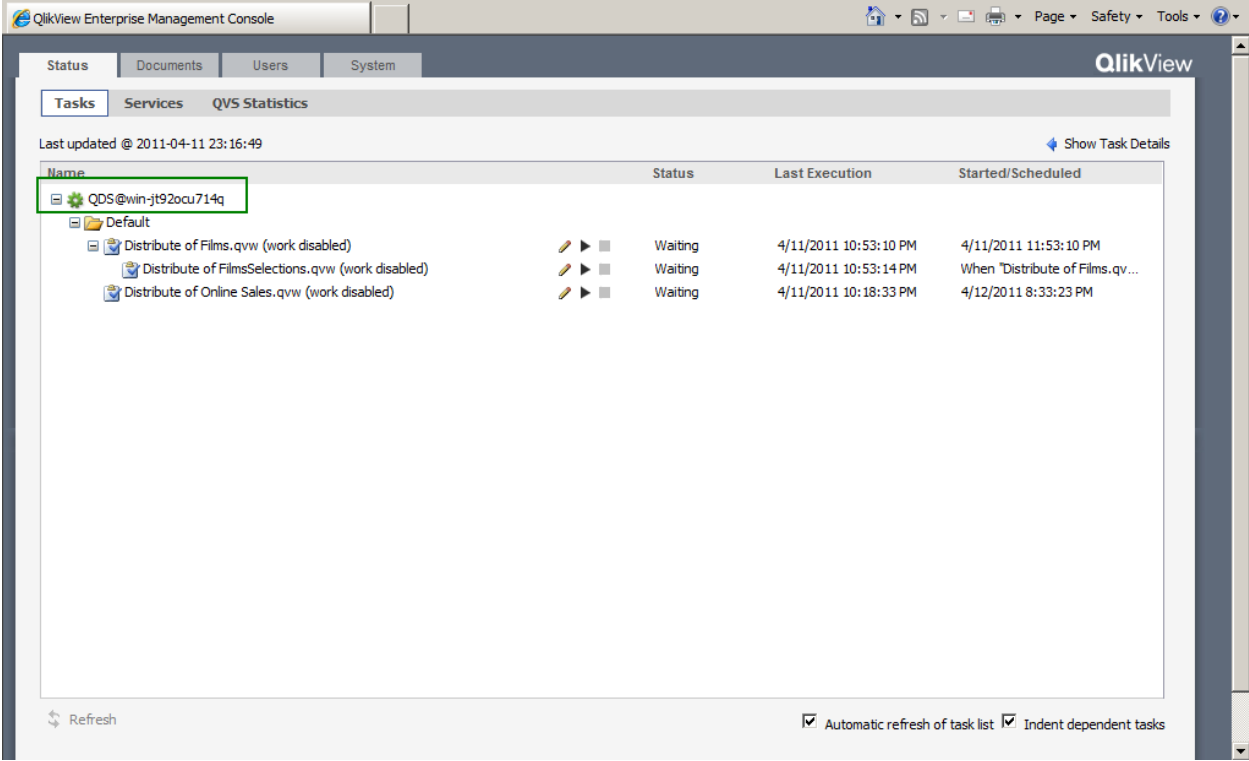


Figure 1 New Server

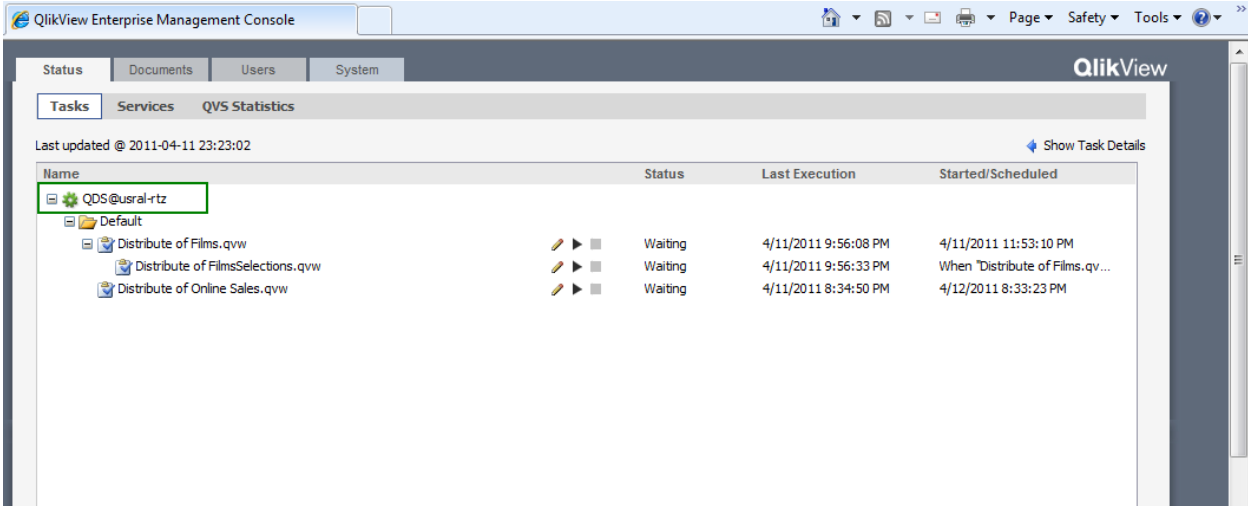


Figure 2 Old Server

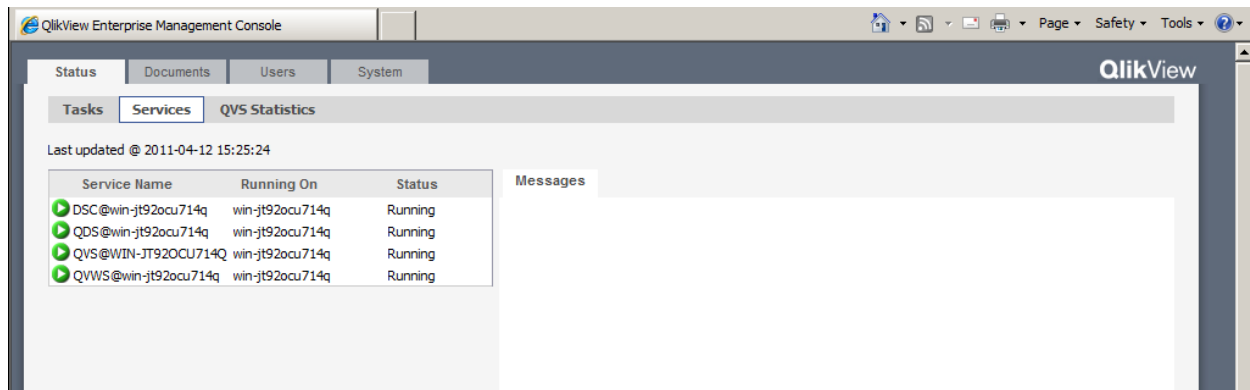


Figure 3 Services Up and Running

15. Run your “new” tasks 😊

\*\*

#### If Migrating from QlikView 9 to QlikView 10:

11(b). Distribution Service Application Data Folder file path should be renamed to point to

C:\ProgramData\QlikTech\DistributionService

11(c). (optional) The Source Folder file location may be changed to point to

C:\ProgramData\QlikTech\Sourcedocuments to reflect the QlikView 10 defaults, else you will have to manually create the default QlikView 9 directory on the new server.

\*\*make sure to double check individual settings in your tasks and System tabs, as different situations might require a few additional tweaks here and there