

How to setup a QVS Cluster with QV v10?

Assumption:

Installation is done on Windows Server 2008 R2 machines

Prerequisites

Following requirements have to be met before starting the QVS cluster configuration:

- A QV Server license allowing QVS clustering
That means that the QVS LEF must consist of an entry “**NUMBER_OF_CLUSTER_NODES;X;;**”
where **X** is 2 or higher
- Accesspoint (based on IIS or QWS), Management Service, QDS, DSC are already installed on QV system in the network
- A domain user to run the QV services on every machine is available
- A shared device like NAS, SAN, Network-Share etc.
All QVS cluster nodes need read /write access to the following data centrally stored:
 - Server status files aka .pgo
 - QlikView Documents aka QVWs
 - QlikView Server Logs aka audit, session, performance, event logs

Step-by-Step Installation

1. Prepare the shared device

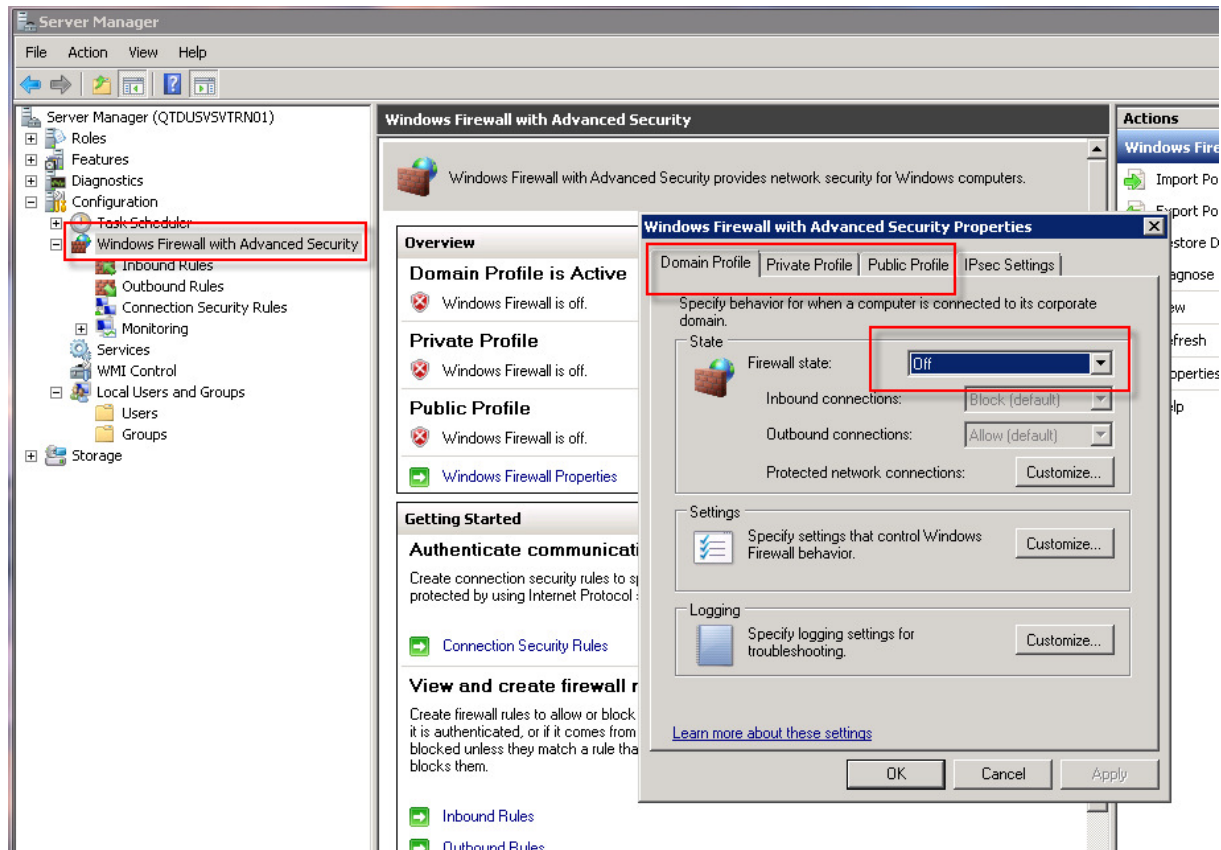
Create folders for the files accessed by every QVS cluster node; e.g.:

- *QVsSettings* for the .pgo-Files
- *QVStorage\Public* for a Mounted Folder
- *QVsLogs* for the Logfiles

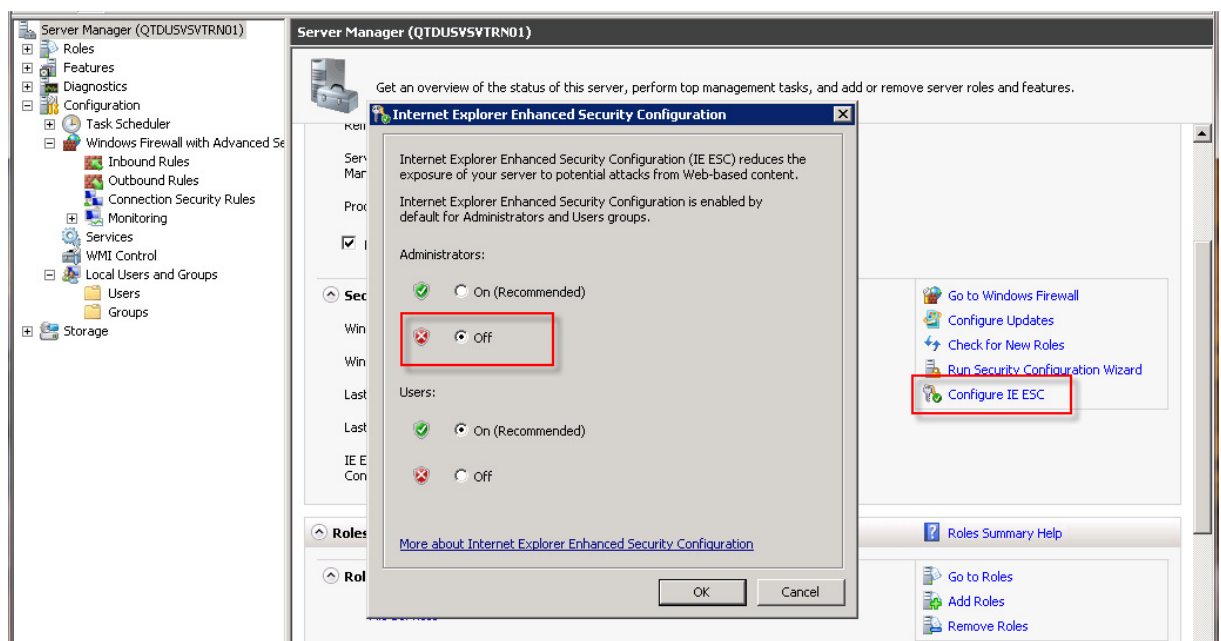
2. Prepare the cluster nodes

On each planned QVS cluster node perform the following configuration

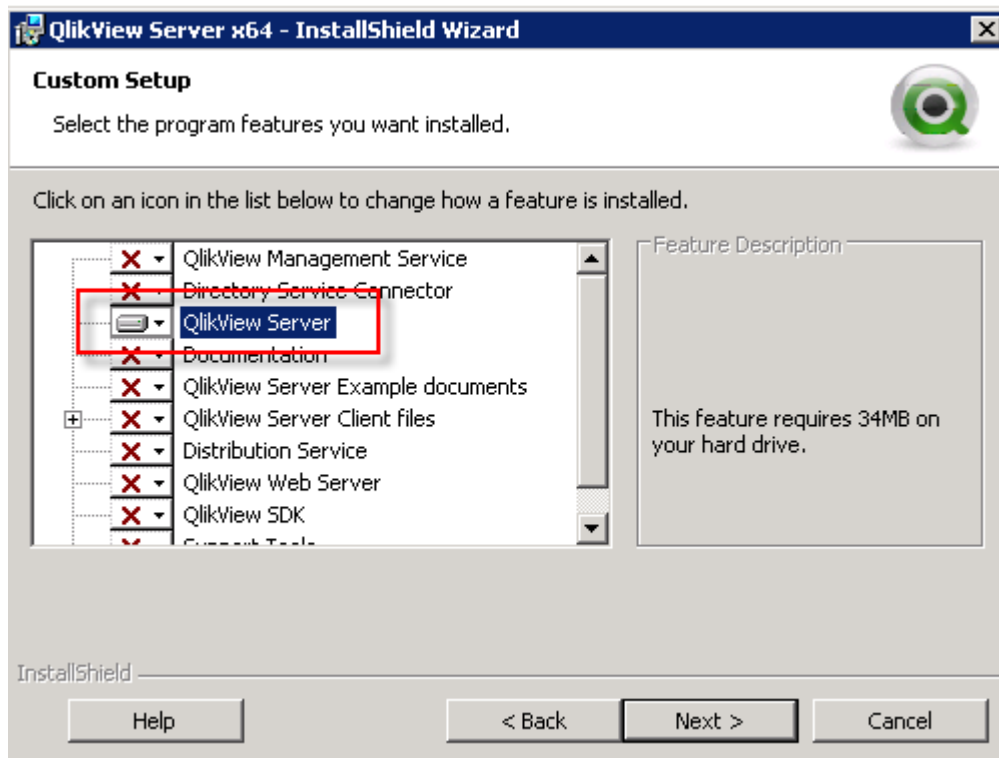
- Login as Administrator
- Turn Off Windows Firewall



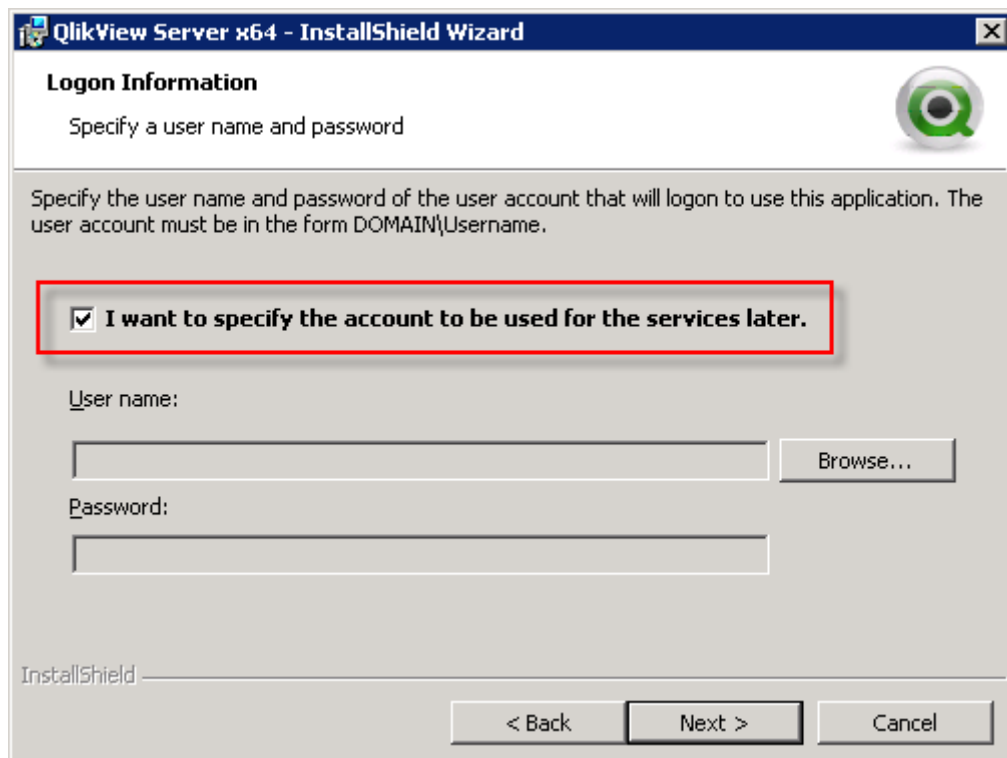
- Deactivate Internet Explorer Enhanced Security Configuration for Administrators



- Add Domain User the QV services should use to Local Administrators Group
- Start QV x64 server setup and install feature “QlikView Server” only



- During the setup check that you will specify the QV service account later (QV RC2 bug)



- Do not restart the system immediately after install is completed, but
 - Add QV service user to “QlikView Administrator Group”
 - Change Logon setting of the QV Server Service to the QV Service user

- “Now” restart the system

3. Configure QVS-Cluster in QEMC

- Open QEMC and register QV Server licence with activated cluster nodes

System

Setup Licenses About Supporting Tasks

Type	Name
QlikView Publisher	QMS@qtdusvsvr01
QlikView Server	QVS@Cluster

QlikView Server License Client Access Licenses (CALs)

Serial and Control

Serial number: 4909460404472664

Control:

Paste the contents of the LEF file here (optional):

```
4909460404472664
NUMBER_OF_CLUSTER_NODES;5;;
NUMBER_OF_DOCUMENTICALS;8;;
NUMBER_OF_SESSIONCALs;5;;
NUMBER_OF_USERCALS;5;;
PRODUCTLEVEL;10;;2010-09-01
SPECIAL_EDITION;EVALUATION;;
TIMELIMIT;VALUE;;2010-09-06
X64;YES;;
5SDH-QS8H-3CJQ-HSNV-7UVL
```

Owner Information

Name: SMR

Organization: QT

- Add first QVS cluster node below QlikView Servers

System

Setup Licenses About

Management Service

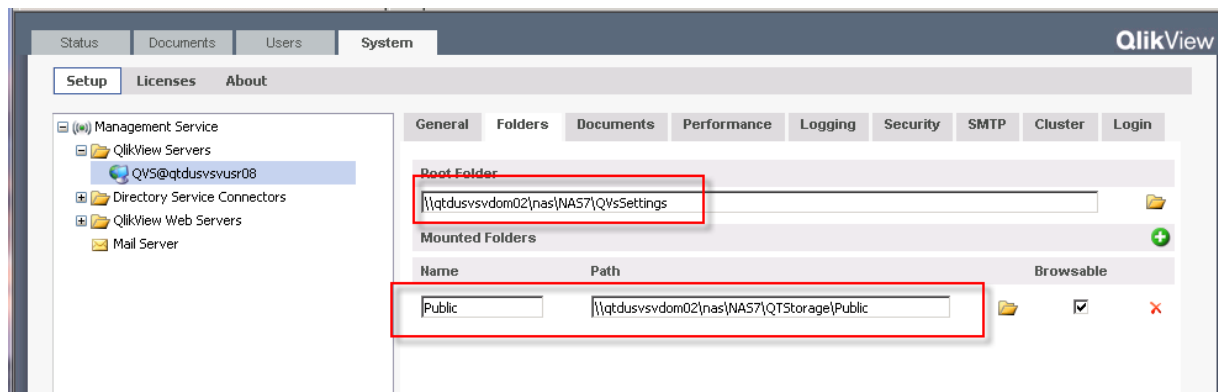
- QlikView Servers
 - QVS@qtdusvsvr08
- Directory Service Connectors
- QlikView Web Servers
- Mail Server

QlikView Servers

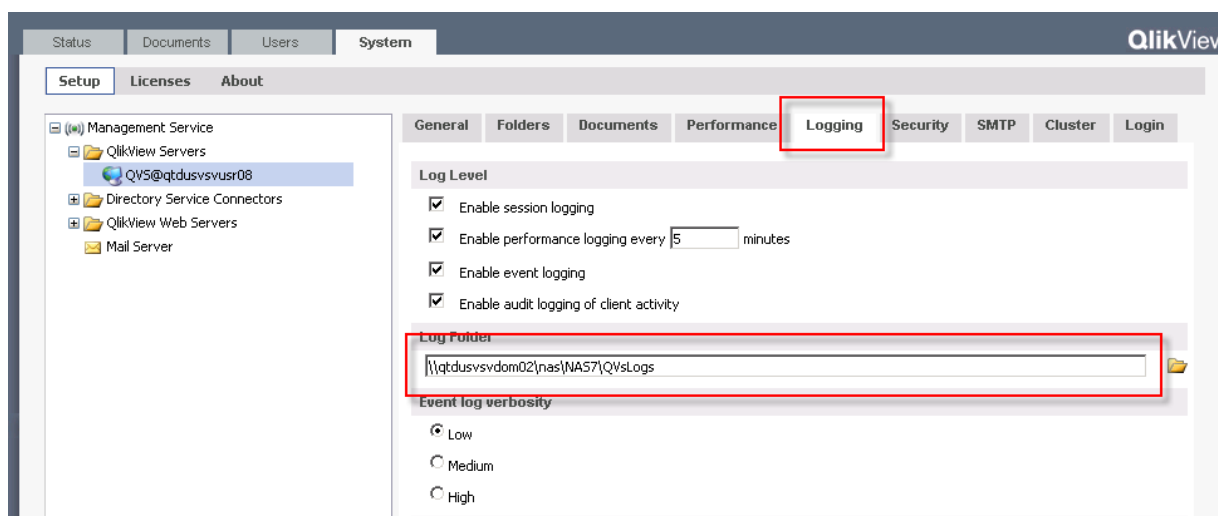
Url

qvp://qtdusvsvr08/

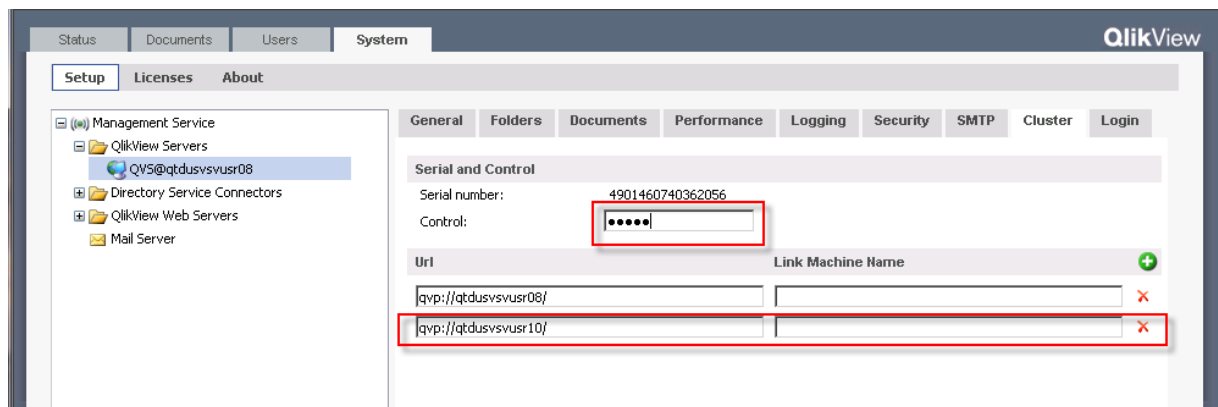
- Switch Root Folder & Mounted Folders to Shared Device folder pathes using UNC-syntax



- Switch Log Folder to Shared Device folder path using UNC-syntax



- Press Apply and let QEMC initiate restart of QVS service
- Add each additional QVS cluster node and activate them by entering Control number of the registered QVS license



- Press Apply and let QEMC initiate restart of QVS service on all nodes
- Verify all QVS nodes are running



- Configure LoadBalancing feature (Functionality s. QVS Reference Manual)

