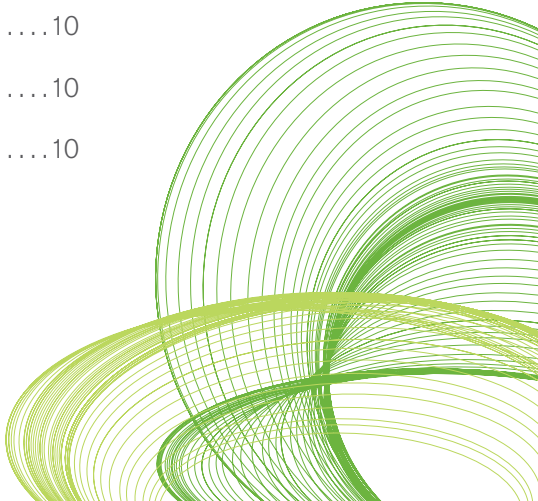


## QLIKVIEW GOVERNANCE DASHBOARD FAQ

- What is the QlikView Governance Dashboard? .....2
- What is the value of the QlikView Governance Dashboard?.....2
- Who should use the QlikView Governance Dashboard? .....2
- What are the requirements to use the QlikView Governance Dashboard? .....2
- What are the components of the QlikView Governance Dashboard? .....3
- What type of information does the QlikView Governance Dashboard provide? .....3
- How is the QlikView metadata extracted from QlikView environments?.....8
- Can I modify the dataflow that is used to extract the metadata? .....8
- Where is the QlikView Governance Dashboard installed?.....8
- How do I clean out the history or reset the QlikView Governance Dashboard data? .....8
- How do I automatically refresh the data provided by the QlikView Governance Dashboard?.....8
- Can I re-load the QlikView Governance Dashboard in QlikView Access Point?.....9
- Can I use Access Point to view the QlikView Governance Dashboard?.....9
- What is the process to load the metadata into the QlikView Governance Dashboard?.....9
- Can I install the QlikView Governance Dashboard to monitor more than one QlikView deployment? .....10
- Does the QlikView Governance Dashboard replace the Meta Scanner application? .....10
- Is this a QlikTech supported product?.....10
- How can I get more information? .....10



## **What is the QlikView Governance Dashboard?**

The QlikView Governance Dashboard is a QlikView product available on QlikMarket that provides QlikTech customers with visibility into their QlikView deployments. It is available freely for download and use and comes with a simple one click install wizard.

## **What is the value of the QlikView Governance Dashboard?**

The QlikView Governance Dashboard focuses on managing and understanding the QlikView environment. It allows QlikView and IT professionals to discover how QlikView is being used. The information learned can help them introduce a more manageable and repeatable process when developing QlikView applications as well as address data lineage and impact analysis type questions, allowing them to maximize data governance and optimize their QlikView investment.

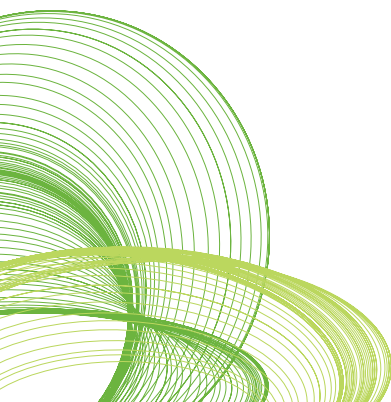
With the QlikView Governance Dashboard, QlikView customers will have a better understanding of their applications and data used by QlikView. It can help with identification of inconsistencies in the environment so they can better prepare best practices, improve compliance (if applicable) and consolidate and reuse commonly used elements to remove redundancy; overall making the QlikView deployment more manageable and efficient.

## **Who should use the QlikView Governance Dashboard?**

- IT and Business Intelligence administrators
- QlikView professionals
- Data stewards

## **What are the requirements to use the QlikView Governance Dashboard?**

The product is to be installed on the same system that a QlikView deployment is running on. QlikView Server and Desktop version 10 SR2 and higher are required to configure and run the QlikView Governance Dashboard application for your specific QlikView deployment(s). Please see the QlikView Governance Dashboard System Requirements document for more information.



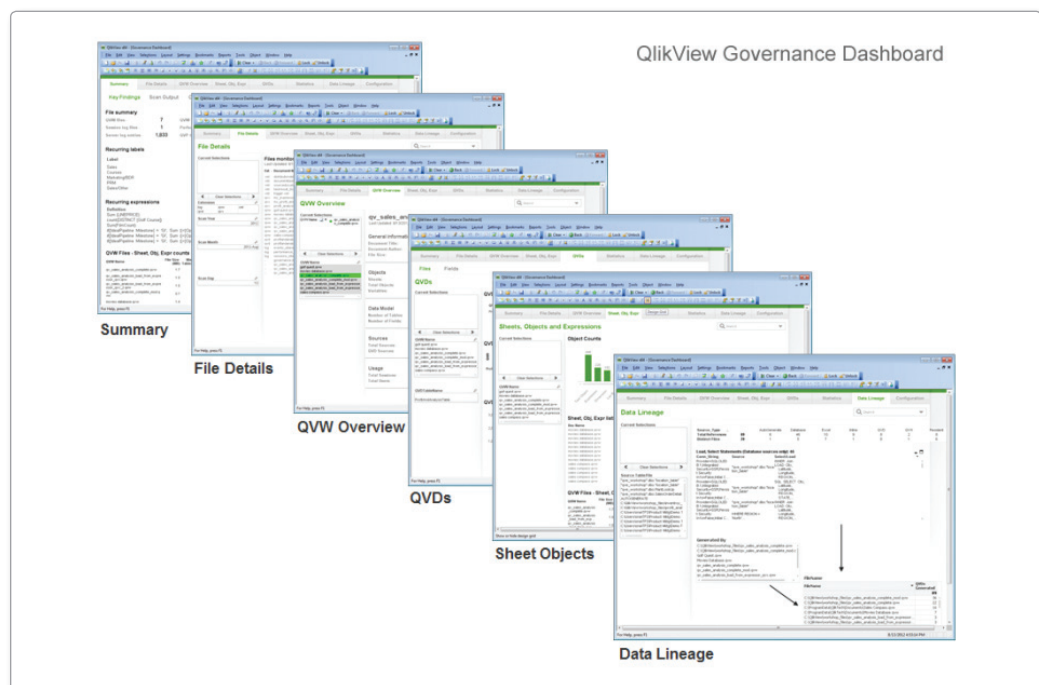
## What are the components of the QlikView Governance Dashboard?

- A QlikView Expressor run-time processing application used to scan and extract valuable metadata from a QlikView deployment(s) such as:
  - Metadata contained within QVD, QVW, QVX, Publisher, Server, Audit files
  - Data sources, tables, fields, expressions, labels, sheet object types and ids, variables
  - File details, paths, dates, sizes, authors, extensions
  - Sessions, errors, warnings, RAM, tasks
- A QlikView dashboard application (QVW) that presents the governance information collected by the QlikView Expressor run-time processing application.

## What type of information does the QlikView Governance Dashboard provide?

The QlikView Governance Dashboard contains information sheets that provide insight into different areas of a QlikView deployment. Each sheet allows the user to search, select and interact with many dimensions including the ability to select time periods to limit or compare results.

**Figure 1: QlikView Governance Dashboard Information Sheets**



**Summary:** This sheet provides key findings such as counts and information on QlikView files (QVD, QVX, QVW, log), recurring labels and expressions, sizes, number of tables and row counts, number of fields and the number of sheet objects in QlikView applications. There is also a customizable complexity analysis sheet that reveals which QlikView applications are the most complex pertaining to an assortment of dimensions.

**Figure 2: QlikView Governance Dashboard Summary Sheet**

Summary	File Details	QVW Overview	Sheet, Obj, Expr	QVDs	Statistics	Data Lineage	Configuration				
<b>Key Findings</b>   Scan Output   Complexity Analysis											
<b>File summary</b>											
QVW files -	6	QVW log files -	1	QVD files -	3	QVX files -	8				
Session log files -	1	Performance log files -	1	Event log files -	1	Audit log files -	0				
Server log entries -	8,152	QVP task result files -	0	Publisher log entries -	0	Publisher repository entries -	0				
<b>Recurring labels</b>											
Label		Occurrences /	No. of	In x							
Sales		10	Definitions	5							
Cost of Goods		5		1							
Longitude		5		1							
Revenue		5		1							
Latitude		5		2							
		5		5							
<b>Recurring expressions</b>											
Definition		Occurrences /	No. of	In x							
Sum (LINEPRICE)		10	Labels	1							
=sum( distinct round (255*pow2,\$(var_zoom-1))) * Longitude		6		1							
SUM(LINE_COGS)		5		1							
SUM(LINEPRICE)		5		1							
= //PopUp text		3		0							
<b>QVW Files - Sheet, Obj, Expr counts</b>											
QVW Name	File Size (MB)	Nbr Tables	Table Rows	Nbr Fields	Total Values	% Distinct	Total Objects	Sessions Total	Sessions Last 14d	Last Reload	Nested Obj's
qv_sales_analysis_complete.qvw	1.7	4	71,221	26	1,708,944	7.2%	62	2	0	-	0
qv_sales_analysis_load_from_expressor...qv.qvw	1.5	3	71,221	26	1,708,944	7.2%	63	0	0	-	0
qv_sales_analysis_load_from_expressor...qv-2.qvw	1.5	3	71,221	26	1,708,944	7.2%	63	0	0	-	0
qv_sales_analysis_complete_mod.qvw	1.7	3	71,221	26	1,708,944	7.3%	65	1	0	-	0
qvqb_prof_analysis_1.qvw	1.7	4	71,221	26	1,708,944	7.3%	65	0	0	-	0
Governance Dashboard.qvw	1.7	29	7,147	266	117,758	8.3%	863	5	0	8/22/2012 4:58:09 AM	11

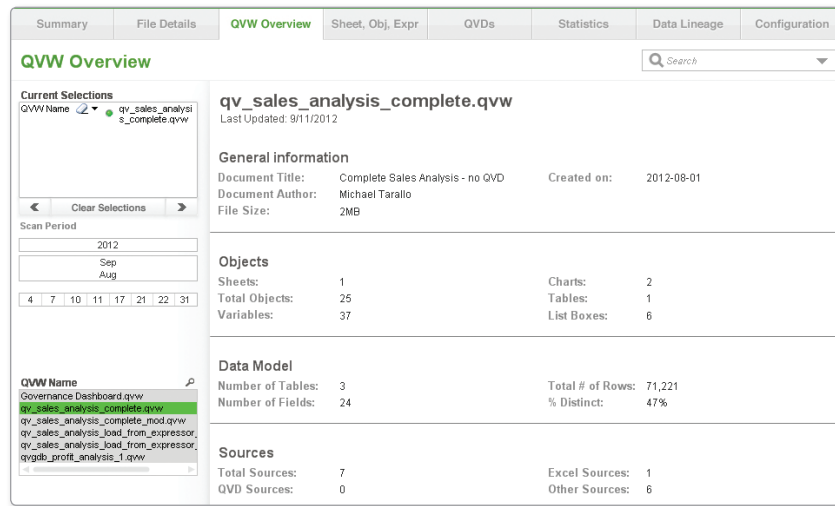
**File Details:** This sheet provides information about the QlikView data files monitored including details such as the document name, extension, file path, size, load date, author, etc...

**Figure 3: QlikView Governance Dashboard File Details Sheet**

Summary	File Details	QVW Overview	Sheet, Obj, Expr	QVDs	Statistics	Data Lineage	Configuration																																																																																																																																																																								
<b>File Details</b>   Search																																																																																																																																																																															
<b>Current Selections</b>		<b>Files monitored</b> Last Updated: 8/11/2012																																																																																																																																																																													
<p>Clear Selections</p> <p>Scan Period</p> <p>2012</p> <p>Sep Aug</p> <p>4 22</p> <p>7 31</p> <p>10</p> <p>11</p> <p>17</p> <p>21</p> <p>Extension</p> <p>log qvw xml</p> <p>qvwd qvxc</p>		<table border="1"> <thead> <tr> <th>Ext / Document Name</th> <th>Load Date</th> <th>Author</th> <th>FileDate</th> <th>Size (Bytes)</th> <th>Generate Log File?</th> <th>Path</th> </tr> </thead> <tbody> <tr><td>xml distributiondetail.xml</td><td>2012-08-17</td><td>-</td><td>2012-08-02</td><td>2,782</td><td>-</td><td>C:\ProgramData\QlikTech\...</td></tr> <tr><td>xml distributiondetail.xml</td><td>2012-08-21</td><td>-</td><td>2012-08-02</td><td>2,782</td><td>-</td><td>C:\ProgramData\QlikTech\...</td></tr> <tr><td>xml distributiondetail.xml</td><td>2012-08-22</td><td>-</td><td>2012-08-02</td><td>2,782</td><td>-</td><td>C:\ProgramData\QlikTech\...</td></tr> <tr><td>xml distributiondetail.xml</td><td>2012-08-31</td><td>-</td><td>2012-08-02</td><td>2,782</td><td>-</td><td>C:\ProgramData\QlikTech\...</td></tr> <tr><td>xml distributiondetail.xml</td><td>2012-09-04</td><td>-</td><td>2012-08-02</td><td>2,782</td><td>-</td><td>C:\ProgramData\QlikTech\...</td></tr> <tr><td>xml distributiondetail.xml</td><td>2012-09-07</td><td>-</td><td>2012-08-02</td><td>2,782</td><td>-</td><td>C:\ProgramData\QlikTech\...</td></tr> <tr><td>xml distributiondetail.xml</td><td>2012-09-10</td><td>-</td><td>2012-08-02</td><td>2,782</td><td>-</td><td>C:\ProgramData\QlikTech\...</td></tr> <tr><td>xml distributiondetail.xml</td><td>2012-09-11</td><td>-</td><td>2012-08-02</td><td>2,782</td><td>-</td><td>C:\ProgramData\QlikTech\...</td></tr> <tr><td>xml documenttask.xml</td><td>2012-08-17</td><td>-</td><td>2012-08-02</td><td>6,790</td><td>-</td><td>C:\ProgramData\QlikTech\...</td></tr> <tr><td>xml documenttask.xml</td><td>2012-08-21</td><td>-</td><td>2012-08-02</td><td>6,790</td><td>-</td><td>C:\ProgramData\QlikTech\...</td></tr> <tr><td>xml documenttask.xml</td><td>2012-08-22</td><td>-</td><td>2012-08-02</td><td>8,091</td><td>-</td><td>C:\ProgramData\QlikTech\...</td></tr> <tr><td>xml documenttask.xml</td><td>2012-09-04</td><td>-</td><td>2012-08-02</td><td>8,091</td><td>-</td><td>C:\ProgramData\QlikTech\...</td></tr> <tr><td>xml documenttask.xml</td><td>2012-09-04</td><td>-</td><td>2012-08-02</td><td>8,091</td><td>-</td><td>C:\ProgramData\QlikTech\...</td></tr> <tr><td>xml documenttask.xml</td><td>2012-09-07</td><td>-</td><td>2012-08-02</td><td>8,091</td><td>-</td><td>C:\ProgramData\QlikTech\...</td></tr> <tr><td>xml documenttask.xml</td><td>2012-09-10</td><td>-</td><td>2012-08-02</td><td>8,091</td><td>-</td><td>C:\ProgramData\QlikTech\...</td></tr> <tr><td>xml documenttask.xml</td><td>2012-09-11</td><td>-</td><td>2012-08-02</td><td>8,091</td><td>-</td><td>C:\ProgramData\QlikTech\...</td></tr> <tr><td>xml sourcedocument.xml</td><td>2012-08-17</td><td>-</td><td>2012-08-02</td><td>2,168</td><td>-</td><td>C:\ProgramData\QlikTech\...</td></tr> <tr><td>xml sourcedocument.xml</td><td>2012-08-21</td><td>-</td><td>2012-08-02</td><td>2,168</td><td>-</td><td>C:\ProgramData\QlikTech\...</td></tr> <tr><td>xml sourcedocument.xml</td><td>2012-08-22</td><td>-</td><td>2012-08-02</td><td>2,461</td><td>-</td><td>C:\ProgramData\QlikTech\...</td></tr> <tr><td>xml sourcedocument.xml</td><td>2012-08-31</td><td>-</td><td>2012-08-02</td><td>2,461</td><td>-</td><td>C:\ProgramData\QlikTech\...</td></tr> <tr><td>xml sourcedocument.xml</td><td>2012-09-04</td><td>-</td><td>2012-08-02</td><td>2,461</td><td>-</td><td>C:\ProgramData\QlikTech\...</td></tr> <tr><td>xml sourcedocument.xml</td><td>2012-09-07</td><td>-</td><td>2012-08-02</td><td>2,461</td><td>-</td><td>C:\ProgramData\QlikTech\...</td></tr> <tr><td>xml sourcedocument.xml</td><td>2012-09-10</td><td>-</td><td>2012-08-02</td><td>2,461</td><td>-</td><td>C:\ProgramData\QlikTech\...</td></tr> </tbody> </table>						Ext / Document Name	Load Date	Author	FileDate	Size (Bytes)	Generate Log File?	Path	xml distributiondetail.xml	2012-08-17	-	2012-08-02	2,782	-	C:\ProgramData\QlikTech\...	xml distributiondetail.xml	2012-08-21	-	2012-08-02	2,782	-	C:\ProgramData\QlikTech\...	xml distributiondetail.xml	2012-08-22	-	2012-08-02	2,782	-	C:\ProgramData\QlikTech\...	xml distributiondetail.xml	2012-08-31	-	2012-08-02	2,782	-	C:\ProgramData\QlikTech\...	xml distributiondetail.xml	2012-09-04	-	2012-08-02	2,782	-	C:\ProgramData\QlikTech\...	xml distributiondetail.xml	2012-09-07	-	2012-08-02	2,782	-	C:\ProgramData\QlikTech\...	xml distributiondetail.xml	2012-09-10	-	2012-08-02	2,782	-	C:\ProgramData\QlikTech\...	xml distributiondetail.xml	2012-09-11	-	2012-08-02	2,782	-	C:\ProgramData\QlikTech\...	xml documenttask.xml	2012-08-17	-	2012-08-02	6,790	-	C:\ProgramData\QlikTech\...	xml documenttask.xml	2012-08-21	-	2012-08-02	6,790	-	C:\ProgramData\QlikTech\...	xml documenttask.xml	2012-08-22	-	2012-08-02	8,091	-	C:\ProgramData\QlikTech\...	xml documenttask.xml	2012-09-04	-	2012-08-02	8,091	-	C:\ProgramData\QlikTech\...	xml documenttask.xml	2012-09-04	-	2012-08-02	8,091	-	C:\ProgramData\QlikTech\...	xml documenttask.xml	2012-09-07	-	2012-08-02	8,091	-	C:\ProgramData\QlikTech\...	xml documenttask.xml	2012-09-10	-	2012-08-02	8,091	-	C:\ProgramData\QlikTech\...	xml documenttask.xml	2012-09-11	-	2012-08-02	8,091	-	C:\ProgramData\QlikTech\...	xml sourcedocument.xml	2012-08-17	-	2012-08-02	2,168	-	C:\ProgramData\QlikTech\...	xml sourcedocument.xml	2012-08-21	-	2012-08-02	2,168	-	C:\ProgramData\QlikTech\...	xml sourcedocument.xml	2012-08-22	-	2012-08-02	2,461	-	C:\ProgramData\QlikTech\...	xml sourcedocument.xml	2012-08-31	-	2012-08-02	2,461	-	C:\ProgramData\QlikTech\...	xml sourcedocument.xml	2012-09-04	-	2012-08-02	2,461	-	C:\ProgramData\QlikTech\...	xml sourcedocument.xml	2012-09-07	-	2012-08-02	2,461	-	C:\ProgramData\QlikTech\...	xml sourcedocument.xml	2012-09-10	-	2012-08-02	2,461	-	C:\ProgramData\QlikTech\...
Ext / Document Name	Load Date	Author	FileDate	Size (Bytes)	Generate Log File?	Path																																																																																																																																																																									
xml distributiondetail.xml	2012-08-17	-	2012-08-02	2,782	-	C:\ProgramData\QlikTech\...																																																																																																																																																																									
xml distributiondetail.xml	2012-08-21	-	2012-08-02	2,782	-	C:\ProgramData\QlikTech\...																																																																																																																																																																									
xml distributiondetail.xml	2012-08-22	-	2012-08-02	2,782	-	C:\ProgramData\QlikTech\...																																																																																																																																																																									
xml distributiondetail.xml	2012-08-31	-	2012-08-02	2,782	-	C:\ProgramData\QlikTech\...																																																																																																																																																																									
xml distributiondetail.xml	2012-09-04	-	2012-08-02	2,782	-	C:\ProgramData\QlikTech\...																																																																																																																																																																									
xml distributiondetail.xml	2012-09-07	-	2012-08-02	2,782	-	C:\ProgramData\QlikTech\...																																																																																																																																																																									
xml distributiondetail.xml	2012-09-10	-	2012-08-02	2,782	-	C:\ProgramData\QlikTech\...																																																																																																																																																																									
xml distributiondetail.xml	2012-09-11	-	2012-08-02	2,782	-	C:\ProgramData\QlikTech\...																																																																																																																																																																									
xml documenttask.xml	2012-08-17	-	2012-08-02	6,790	-	C:\ProgramData\QlikTech\...																																																																																																																																																																									
xml documenttask.xml	2012-08-21	-	2012-08-02	6,790	-	C:\ProgramData\QlikTech\...																																																																																																																																																																									
xml documenttask.xml	2012-08-22	-	2012-08-02	8,091	-	C:\ProgramData\QlikTech\...																																																																																																																																																																									
xml documenttask.xml	2012-09-04	-	2012-08-02	8,091	-	C:\ProgramData\QlikTech\...																																																																																																																																																																									
xml documenttask.xml	2012-09-04	-	2012-08-02	8,091	-	C:\ProgramData\QlikTech\...																																																																																																																																																																									
xml documenttask.xml	2012-09-07	-	2012-08-02	8,091	-	C:\ProgramData\QlikTech\...																																																																																																																																																																									
xml documenttask.xml	2012-09-10	-	2012-08-02	8,091	-	C:\ProgramData\QlikTech\...																																																																																																																																																																									
xml documenttask.xml	2012-09-11	-	2012-08-02	8,091	-	C:\ProgramData\QlikTech\...																																																																																																																																																																									
xml sourcedocument.xml	2012-08-17	-	2012-08-02	2,168	-	C:\ProgramData\QlikTech\...																																																																																																																																																																									
xml sourcedocument.xml	2012-08-21	-	2012-08-02	2,168	-	C:\ProgramData\QlikTech\...																																																																																																																																																																									
xml sourcedocument.xml	2012-08-22	-	2012-08-02	2,461	-	C:\ProgramData\QlikTech\...																																																																																																																																																																									
xml sourcedocument.xml	2012-08-31	-	2012-08-02	2,461	-	C:\ProgramData\QlikTech\...																																																																																																																																																																									
xml sourcedocument.xml	2012-09-04	-	2012-08-02	2,461	-	C:\ProgramData\QlikTech\...																																																																																																																																																																									
xml sourcedocument.xml	2012-09-07	-	2012-08-02	2,461	-	C:\ProgramData\QlikTech\...																																																																																																																																																																									
xml sourcedocument.xml	2012-09-10	-	2012-08-02	2,461	-	C:\ProgramData\QlikTech\...																																																																																																																																																																									

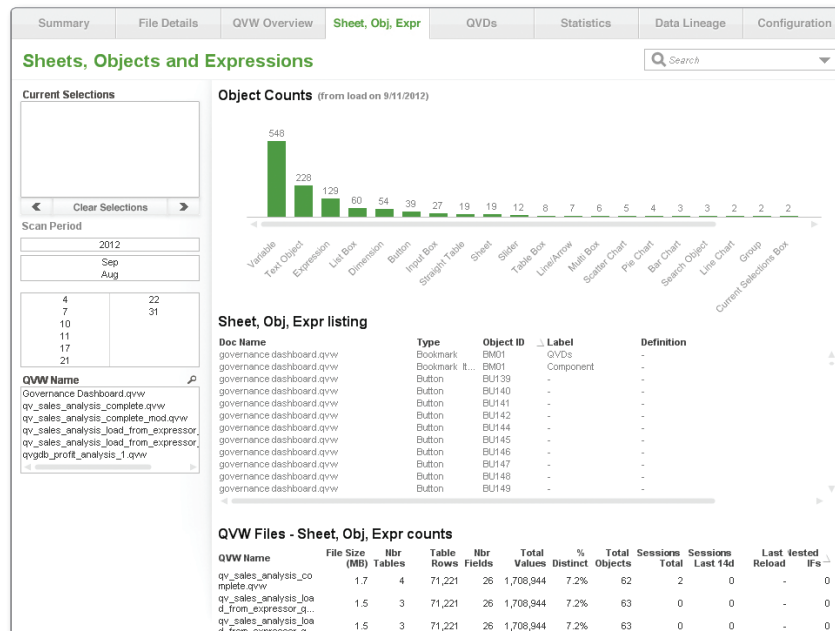
**QVW Overview:** This sheet provides information about the QlikView applications in the QlikView deployment. It contains various counts related to usage, data sources, objects, tables and fields for the selected application.

**Figure 4: QlikView Governance Dashboard QVW Overview Sheet**



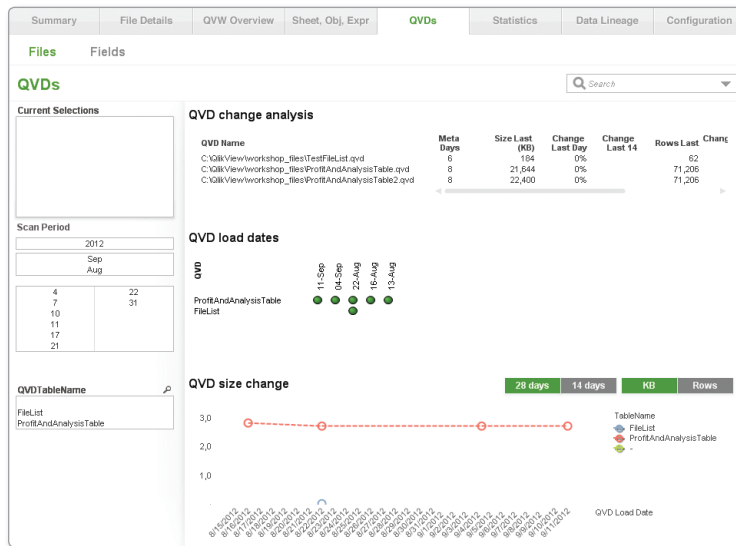
**Sheet, Obj, Expr:** This sheet provides information about different object types, object names and definitions in each QlikView application.

**Figure 5: QlikView Governance Dashboard Sheets, Objects and Expressions Sheet**



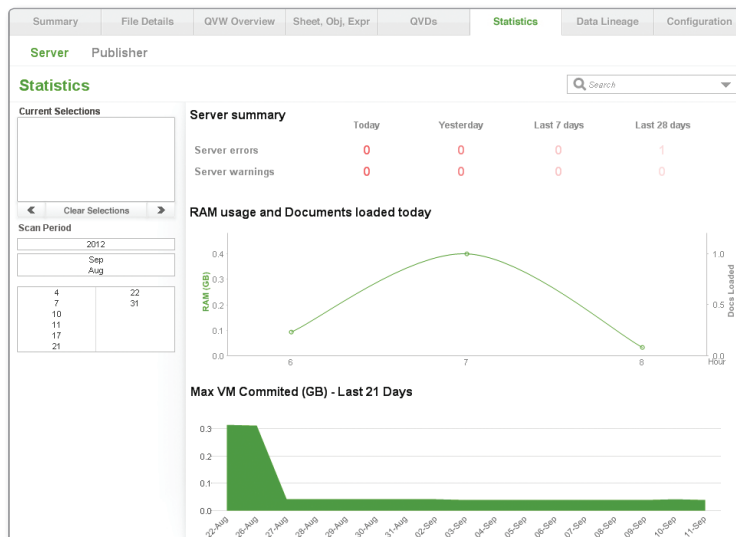
**QVDs:** This sheet provides change analysis on the QlikView data files. It displays the times and the dates that the QVDs are refreshed, shows visual display for the QVDs' size change, and the number of rows information.

**Figure 6: QlikView Governance Dashboard QVDs Sheet**



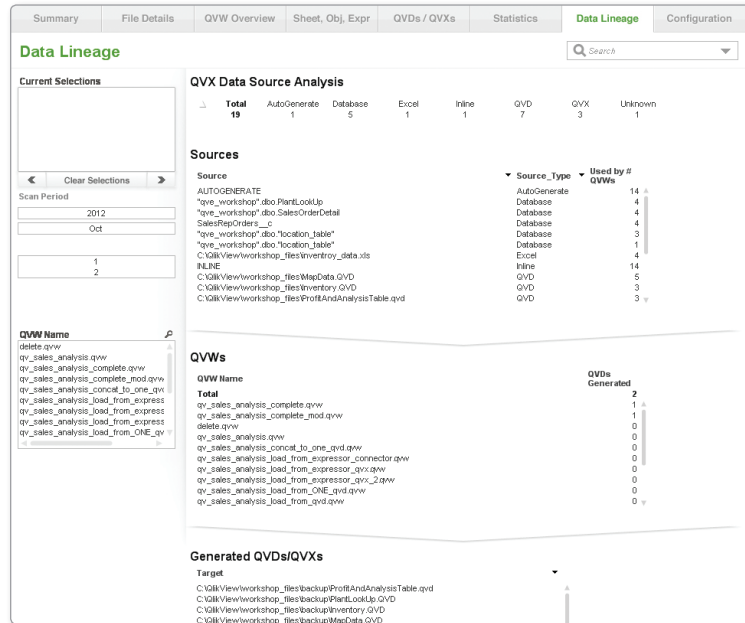
**Statistics:** This sheet has information about the QlikView Server and Publisher system resource usage. It also provides visibility on the QlikView Server and Publisher log files such as the number of errors and warnings, Publisher task statuses, run times etc...

**Figure 7: QlikView Governance Dashboard Statistics Sheet**



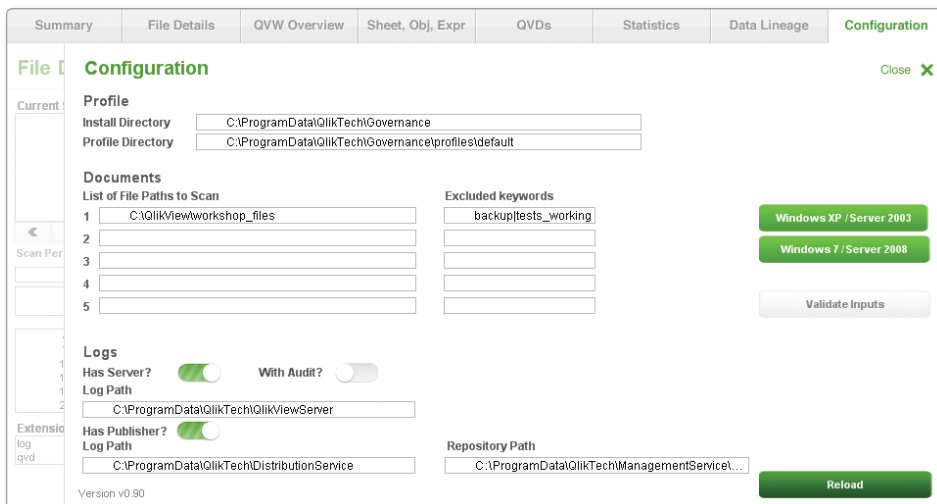
**Data Lineage:** The data lineage sheet provides visibility on the data sources, and the data flow between the data sources, the QlikView data files and the QlikView applications.

**Figure 8: QlikView Governance Dashboard Data Lineage Sheet**



**Configuration:** The Configuration sheet is used to setup the appropriate QlikView Server / Publisher file directories so the QlikView Expressor run time engine can extract the data needed to create the QlikView associative data model used by the information sheets.

**Figure 9: QlikView Governance Dashboard Configuration Sheet**



## **How is the QlikView metadata extracted from QlikView environments?**

The QlikView Governance Dashboard installs a lightweight runtime engine powered by QlikView Expressor. The runtime engine uses a compiled dataflow that was created with the QlikView Expressor Desktop product. The Dataflow is configured as such to harvest most of the elements from the QlikView deployment documents and log files and prepare it to be loaded into the QlikView associative data model.

## **Can I modify the dataflow that is used to extract the metadata?**

No. The dataflow is compiled and obfuscated and cannot be modified.

## **Where is the QlikView Governance Dashboard installed?**

On the same machine as the QlikView Server / Publisher - under the C:\ProgramData\QlikTech\Governance directory.

## **How do I clean out the history or reset the QlikView Governance Dashboard data?**

The QlikView Governance Dashboard uses QlikView Expressor dataflows to create QlikView data files (QVD / QVX) and the associative data model which is used by the information sheets. This data is stored in a hidden directory located on the same machine as the QlikView Server C:\ProgramData\QlikTech\Governance

- C:\ProgramData\QlikTech\Governance\profiles\default\QVD\_Historical  
QVD files that contain all data from previous scans
- C:\ProgramData\QlikTech\Governance\profiles\default\QVX\_LastRun  
QVX files that contain all data from current or last scan

In order to reset the environment, simply delete these files and reload the QlikView Governance Dashboard application using QlikView Desktop.

## **How do I automatically refresh the data provided by the QlikView Governance Dashboard?**

The QlikView Governance Dashboard is a QlikView application that uses the same mechanisms as any other QlikView application. You would simply setup a Publisher / Distribution task to reload the Governance Dashboard.qvw at a specified time.



## Can I re-load the QlikView Governance Dashboard in QlikView AccessPoint?

No. Reloads require the use of QlikView Desktop or Publisher.

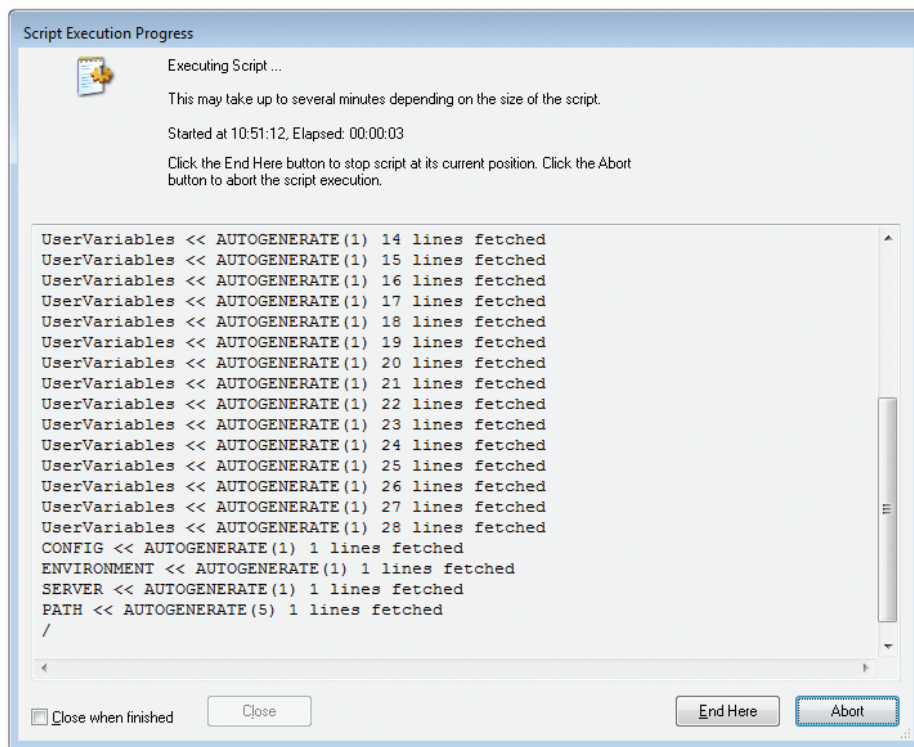
## Can I use AccessPoint to view the QlikView Governance Dashboard?

Yes. The QlikView Governance Dashboard is a QlikView application that uses the same mechanisms as any other QlikView application and can be viewed and secured as such.

## What is the process to load the metadata into the QlikView Governance Dashboard?

In order to provide the initial data load to prepare the QlikView Governance Dashboard for usage you must first open the Governance Dashboard.qvw file using QlikView Desktop. The file can be found here C:\ProgramData\QlikTech\Governance\profiles\default. You can then provide the file paths (where all QlikView documents and data files stored) in the Configuration sheet. Next reload the document, it will scan and load all of the metadata for further analysis into the QlikView associative data model.

Figure 10: QlikView Governance Dashboard Scanning Process



## **Can I install the QlikView Governance Dashboard to monitor more than one QlikView deployment?**

If a remote server node's QlikView files are accessible on a network mounted file system, then those files would be accessible to a locally executing scanner. Future releases will support remote collection therefore enabling centralized metadata concentration across multiple non-clustered nodes.

## **Does the QlikView Governance Dashboard replace the MetaScanner application?**

In short, yes. MetaScanner was a non-supported utility built by QlikTech consultants and available for free on QlikCommunity. Because no further work by QlikTech will be invested in the MetaScanner, we strongly encourage all existing MetaScanner users to leverage the QlikView Governance Dashboard.

## **Is this a QlikTech supported product?**

Yes. Support for the QlikView Governance Dashboard will be provided by the QlikTech support organization as part of the QlikView Server purchase.

## **How can I get more information?**

Please visit [www.qlikview.com/governance-dashboard](http://www.qlikview.com/governance-dashboard)