

Hi Sabrina

I have uploaded image and error log Below) with step by step process and error logs.

```
java.lang.RuntimeException: java.lang.RuntimeException: java.sql.SQLException: No existe la Base de Datos 'GEST_2015_6'
  at org.talend.core.model.metadata.builder.database.ExtractMetaUtils.getConnection(ExtractMetaUtils.java:875)
  at org.talend.metadata.managment.utils.MetadataConnectionUtils.getConnection(MetadataConnectionUtils.java:1216)
  at org.talend.sqlbuilder.repository.utility.SQLBuilderRepositoryNodeManager.updatePackage(SQLBuilderRepositoryNodeManager.java:686)
  at org.talend.sqlbuilder.repository.utility.SQLBuilderRepositoryNodeManager.createNewRepositoryNode(SQLBuilderRepositoryNodeManager.java:660)

  at org.talend.sqlbuilder.repository.utility.SQLBuilderRepositoryNodeManager.getRepositoryNodeByBuildIn(SQLBuilderRepositoryNodeManager.java:599)

  at org.talend.sqlbuilder.ui.progress.OpenSQLBuilderDialogProgress.run(OpenSQLBuilderDialogProgress.java:54)
  at org.talend.sqlbuilder.ui.OpenSQLBuilderDialogJob.run(OpenSQLBuilderDialogJob.java:117)
  at org.eclipse.core.internal.jobs.Worker.run(Worker.java:54)
Caused by: java.lang.RuntimeException: java.sql.SQLException: No existe la Base de Datos 'GEST_2015_6'
  at org.talend.core.model.metadata.builder.database.JDBCdriverLoader.getConnection(JDBCdriverLoader.java:195)
  at org.talend.core.model.metadata.builder.database.ExtractMetaUtils.connect(ExtractMetaUtils.java:1041)
  at org.talend.core.model.metadata.builder.database.ExtractMetaUtils.getConnection(ExtractMetaUtils.java:830)
  ... 7 more
Caused by: java.sql.SQLException: No existe la Base de Datos 'GEST_2015_6'
  at apl.dbp.a(SourceFile:61)
  at apl.dde.<init>(SourceFile:51)
  at apl.ddh.a(SourceFile:307)
  at apl.ddh.a(SourceFile:21)
  at apl.ddp.a(SourceFile:1300)
  at apl.ddp.a(SourceFile:979)
  at apl.ddp.run(SourceFile:719)
  at java.util.concurrent.ThreadPoolExecutor.runWorker(Unknown Source)
  at java.util.concurrent.ThreadPoolExecutor$Worker.run(Unknown Source)
  at java.lang.Thread.run(Unknown Source)
  at bd4.jdbc.k.a(SourceFile:281)
  at bd4.jdbc.k.a(SourceFile:178)
  at bd4.jdbc.k.<init>(SourceFile:43)
  at bd4.jdbc.j.<init>(SourceFile:60)
  at bd4.jdbc.j.<init>(SourceFile:36)
  at bd4.jdbc.XDriver.connect(SourceFile:18)
  at org.talend.core.model.metadata.builder.database.DriverShim.connect(DriverShim.java:41)
  at org.talend.core.model.metadata.builder.database.JDBCdriverLoader.getConnection(JDBCdriverLoader.java:186)
  ... 9 more

org.eclipse.swt.SWTException: Failed to execute runnable (java.lang.RuntimeException: java.lang.RuntimeException: java.sql.SQLException: No existe
  at org.eclipse.swt.SWT.error(SWT.java:4441)
  at org.eclipse.swt.SWT.error(SWT.java:4356)
  at org.eclipse.swt.widgets.Synchronizer.runAsyncMessages(Synchronizer.java:139)
  at org.eclipse.swt.widgets.Display.runAsyncMessages(Display.java:4147)
  at org.eclipse.swt.widgets.Display.readAndDispatch(Display.java:3764)
  at org.eclipse.e4.ui.internal.workbench.swt.PartRenderingEngine$9.run(PartRenderingEngine.java:1151)
  at org.eclipse.core.databinding.observable.Realm.runWithDefault(Realm.java:332)
  at org.eclipse.e4.ui.internal.workbench.swt.PartRenderingEngine.run(PartRenderingEngine.java:1032)
  at org.eclipse.e4.ui.internal.workbench.E4Workbench.createAndRunUI(E4Workbench.java:148)
  at org.eclipse.ui.internal.Workbench$5.run(Workbench.java:636)
```

```
at org.eclipse.core.databinding.observable.Realm.runWithDefault(Realm.java:332)
at org.eclipse.ui.internal.Workbench.createAndRunWorkbench(Workbench.java:579)
at org.eclipse.ui.PlatformUI.createAndRunWorkbench(PlatformUI.java:150)
at org.talend.rcp.intro.Application.start(Application.java:197)
at org.eclipse.equinox.internal.app.EclipseAppHandle.run(EclipseAppHandle.java:196)
at org.eclipse.core.runtime.internal.adaptor.EclipseAppLauncher.runApplication(EclipseAppLauncher.java:134)
at org.eclipse.core.runtime.internal.adaptor.EclipseAppLauncher.start(EclipseAppLauncher.java:104)
at org.eclipse.core.runtime.adaptor.EclipseStarter.run(EclipseStarter.java:380)
at org.eclipse.core.runtime.adaptor.EclipseStarter.run(EclipseStarter.java:235)
at sun.reflect.NativeMethodAccessorImpl.invoke0(Native Method)
at sun.reflect.NativeMethodAccessorImpl.invoke(Unknown Source)
at sun.reflect.DelegatingMethodAccessorImpl.invoke(Unknown Source)
at java.lang.reflect.Method.invoke(Unknown Source)
at org.eclipse.equinox.launcher.Main.invokeFramework(Main.java:648)
at org.eclipse.equinox.launcher.Main.basicRun(Main.java:603)
at org.eclipse.equinox.launcher.Main.run(Main.java:1465)
Caused by: java.lang.RuntimeException: java.lang.RuntimeException: java.sql.SQLException: No existe la Base de Datos 'GEST_2015_6'
at org.talend.core.model.metadata.builder.database.ExtractMetaDataUtils.getConnection(ExtractMetaDataUtils.java:875)
at org.talend.metadata.managment.utils.MetadataConnectionUtils.getConnection(MetadataConnectionUtils.java:1216)
at org.talend.sqlbuilder.repository.utility.SQLBuilderRepositoryNodeManager.updatePackage(SQLBuilderRepositoryNodeManager.java:686)
at org.talend.sqlbuilder.repository.utility.SQLBuilderRepositoryNodeManager.createNewRepositoryNode(SQLBuilderRepositoryNodeManager.java:660)

at org.talend.sqlbuilder.repository.utility.SQLBuilderRepositoryNodeManager.getRepositoryNodeByBuildIn(SQLBuilderRepositoryNodeManager.java:599)

at org.talend.sqlbuilder.dbstructure.DBTreeProvider.initialize(DBTreeProvider.java:261)
at org.talend.sqlbuilder.dbstructure.DBTreeProvider.getElements(DBTreeProvider.java:242)
at org.eclipse.jface.viewers.StructuredViewer.getRawChildren(StructuredViewer.java:999)
at org.eclipse.jface.viewers.ColumnViewer.getRawChildren(ColumnViewer.java:699)
at org.eclipse.jface.viewers.AbstractTreeViewer.getRawChildren(AbstractTreeViewer.java:1349)
at org.eclipse.jface.viewers.TreeViewer.getRawChildren(TreeViewer.java:353)
at org.eclipse.jface.viewers.StructuredViewer.getFilteredChildren(StructuredViewer.java:905)
at org.eclipse.jface.viewers.AbstractTreeViewer.getSortedChildren(AbstractTreeViewer.java:617)
at org.eclipse.jface.viewers.AbstractTreeViewer$1.run(AbstractTreeViewer.java:815)
at org.eclipse.swt.custom.BusyIndicator.showWhile(BusyIndicator.java:70)
at org.eclipse.jface.viewers.AbstractTreeViewer.createChildren(AbstractTreeViewer.java:791)
at org.eclipse.jface.viewers.TreeViewer.createChildren(TreeViewer.java:611)
at org.eclipse.jface.viewers.AbstractTreeViewer.createChildren(AbstractTreeViewer.java:762)
at org.eclipse.jface.viewers.AbstractTreeViewer.internalInitializeTree(AbstractTreeViewer.java:1543)
at org.eclipse.jface.viewers.TreeViewer.internalInitializeTree(TreeViewer.java:790)
at org.eclipse.jface.viewers.AbstractTreeViewer$5.run(AbstractTreeViewer.java:1527)
at org.eclipse.jface.viewers.StructuredViewer.preservingSelection(StructuredViewer.java:1436)
at org.eclipse.jface.viewers.TreeViewer.preservingSelection(TreeViewer.java:366)
at org.eclipse.jface.viewers.StructuredViewer.preservingSelection(StructuredViewer.java:1397)
at org.eclipse.jface.viewers.AbstractTreeViewer.inputChanged(AbstractTreeViewer.java:1519)
at org.eclipse.jface.viewers.ContentViewer.setInput(ContentViewer.java:292)
at org.eclipse.jface.viewers.StructuredViewer.setInput(StructuredViewer.java:1675)
at org.talend.sqlbuilder.ui.DBStructureComposite.createDBTree(DBStructureComposite.java:295)
at org.talend.sqlbuilder.ui.DBStructureComposite.<init>(DBStructureComposite.java:159)
at org.talend.sqlbuilder.ui.BuildInDBStructure.addComponents(BuildInDBStructure.java:122)
at org.talend.sqlbuilder.ui.BuildInDBStructure.<init>(BuildInDBStructure.java:93)
at org.talend.sqlbuilder.ui.SQLBuilderDialog.createDatabaseStructure(SQLBuilderDialog.java:353)
at org.talend.sqlbuilder.ui.SQLBuilderDialog.createDialogArea(SQLBuilderDialog.java:281)
at org.eclipse.jface.dialogs.Dialog.createContents(Dialog.java:768)
at org.eclipse.jface.window.Window.create(Window.java:435)
at org.eclipse.jface.dialogs.Dialog.create(Dialog.java:1101)
at org.eclipse.jface.window.Window.open(Window.java:797)
```

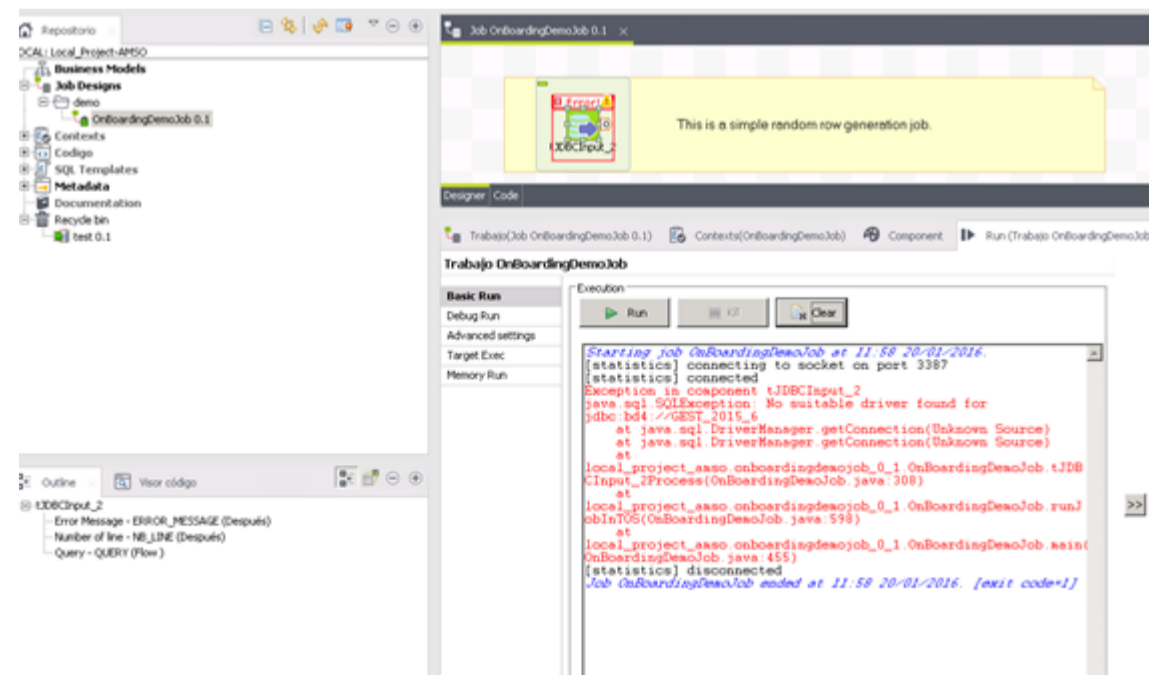
```

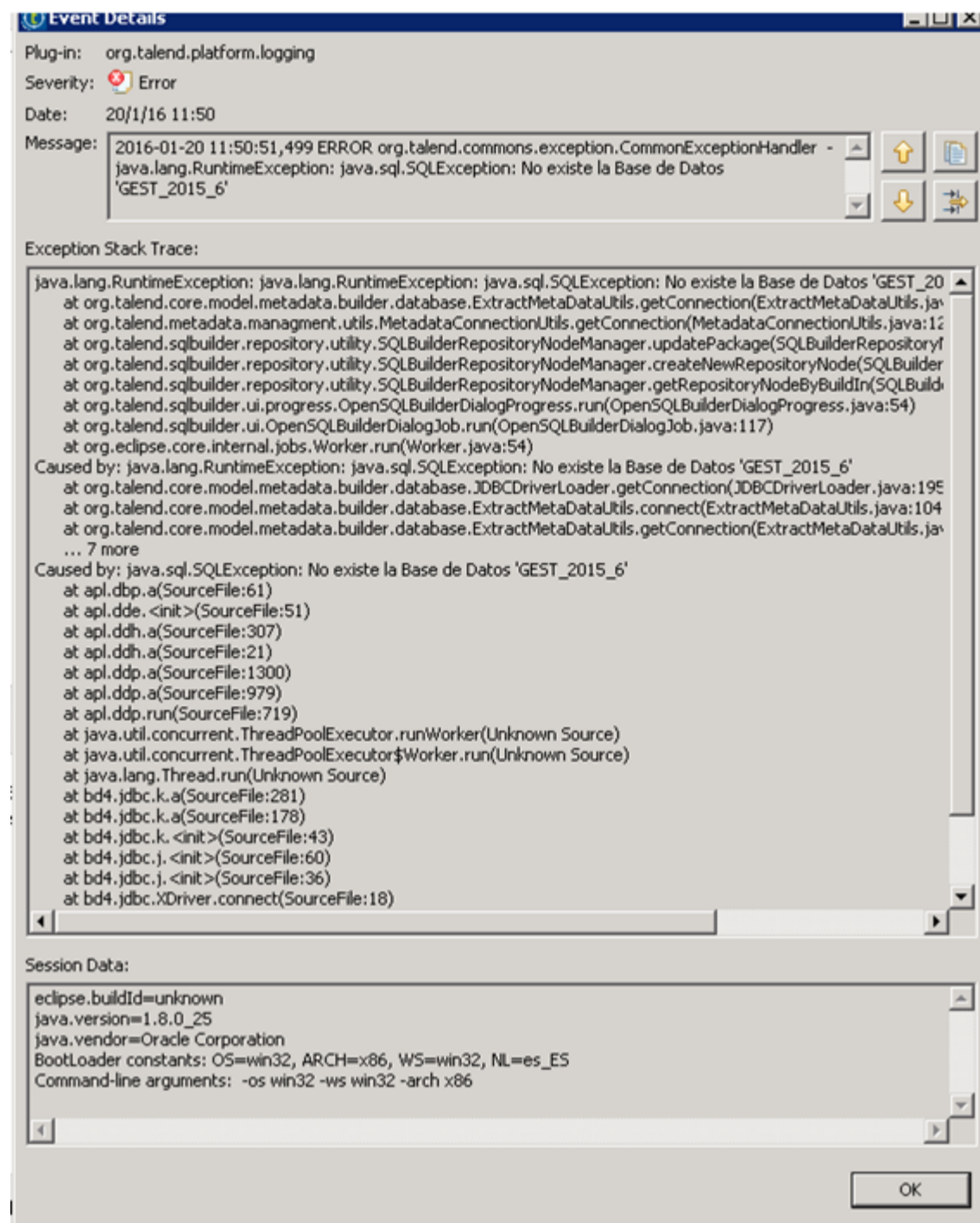
at org.talend.sqlbuilder.ui.OpenSQLBuilderDialogJob$1.run(OpenSQLBuilderDialogJob.java:134)
at org.eclipse.swt.widgets.RunWithLock.run(RunnableLock.java:35)
at org.eclipse.swt.widgets.Synchronizer.runAsyncMessages(Synchronizer.java:136)
... 23 more
Caused by: java.lang.RuntimeException: java.sql.SQLException: No existe la Base de Datos 'GEST_2015_6'
at org.talend.core.model.metadata.builder.database.JDBCDriverLoader.getConnection(JDBCDriverLoader.java:195)
at org.talend.core.model.metadata.builder.database.ExtractMetaUtils.connect(ExtractMetaUtils.java:1041)
at org.talend.core.model.metadata.builder.database.ExtractMetaUtils.getConnection(ExtractMetaUtils.java:830)
... 62 more
Caused by: java.sql.SQLException: No existe la Base de Datos 'GEST_2015_6'
at apl.dbp.a(SourceFile:61)
at apl.dde.<init>(SourceFile:51)
at apl.ddh.a(SourceFile:307)
at apl.ddh.a(SourceFile:21)
at apl.ddp.a(SourceFile:1300)
at apl.ddp.a(SourceFile:979)
at apl.ddp.run(SourceFile:719)
at java.util.concurrent.ThreadPoolExecutor.runWorker(Unknown Source)
at java.util.concurrent.ThreadPoolExecutor$Worker.run(Unknown Source)
at java.lang.Thread.run(Unknown Source)
at bd4.jdbc.k.a(SourceFile:281)
at bd4.jdbc.k.a(SourceFile:178)
at bd4.jdbc.k.<init>(SourceFile:43)
at bd4.jdbc.j.<init>(SourceFile:60)
at bd4.jdbc.j.<init>(SourceFile:36)
at bd4.jdbc.XDriver.connect(SourceFile:18)
at org.talend.core.model.metadata.builder.database.DriverShim.connect(DriverShim.java:41)
at org.talend.core.model.metadata.builder.database.JDBCDriverLoader.getConnection(JDBCDriverLoader.java:186)
... 64 more

```

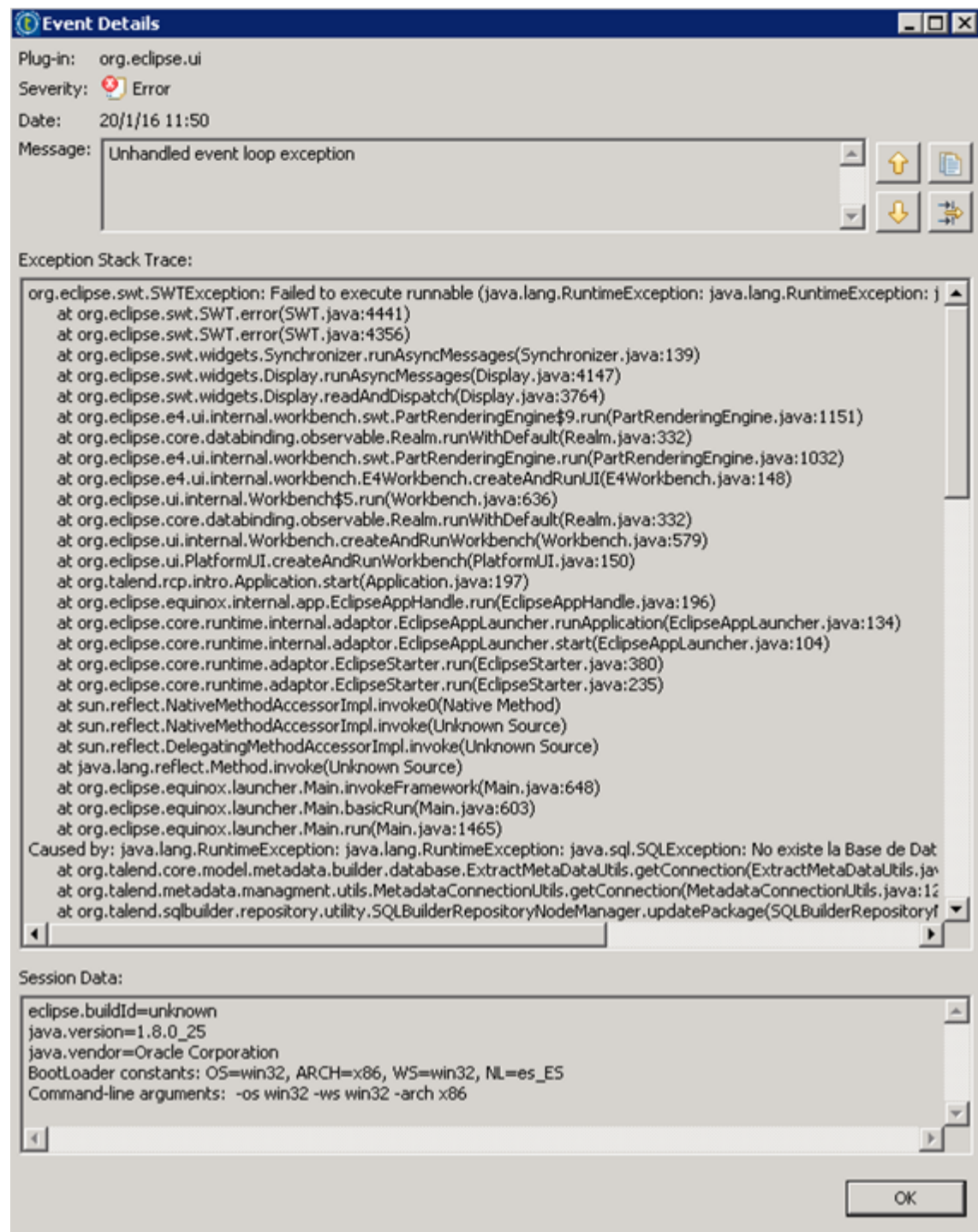
I hope that help us to solve this problem. I impatient to work with Talend!
Best regards

Jean Marc





see FULL text in first code zone above.



see FULL text in second code zone above.